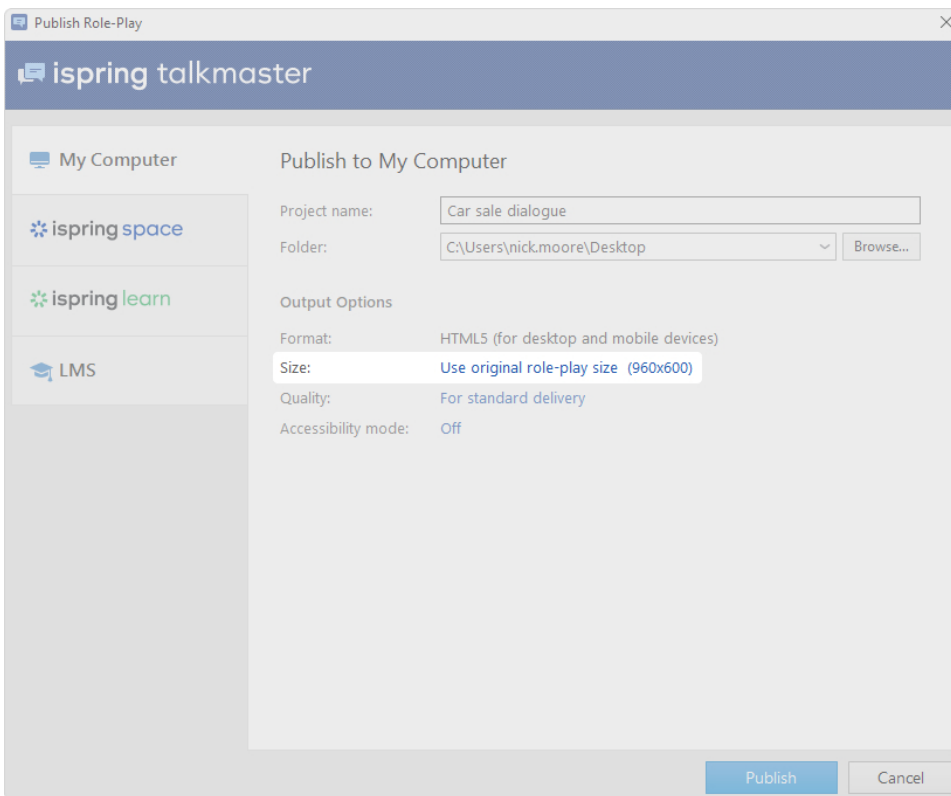


# Size Settings

By default, the slide size of a published role-play is the one that is specified in the role-play properties. But, if you wish, you can select how a role-play displays in a browser after publishing.

1. Click on the link in the **Size** field.



2. Next, select one of three options and click **Save**.

| Option                                     | Description  |
|--|--|
| <b>Fit role-play to browser window</b>     | The size of the slides is adjusted to the size of the browser window.    |
| <b>Use original role-play slide size</b>   | The size of the slides is the one specified in the role-play properties. |
| <b>Scale role-play slide to exact size</b> | The size of the slides is specified in pixels.                           |

