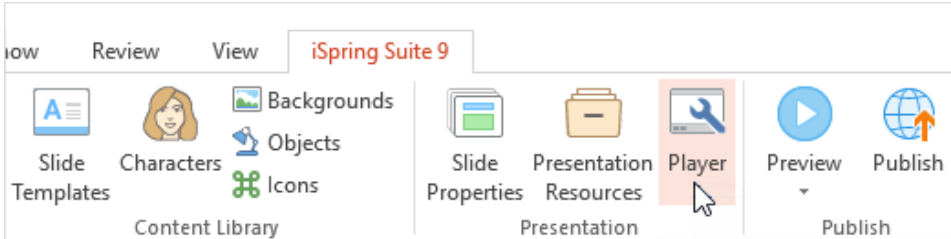


Video Lecture Player

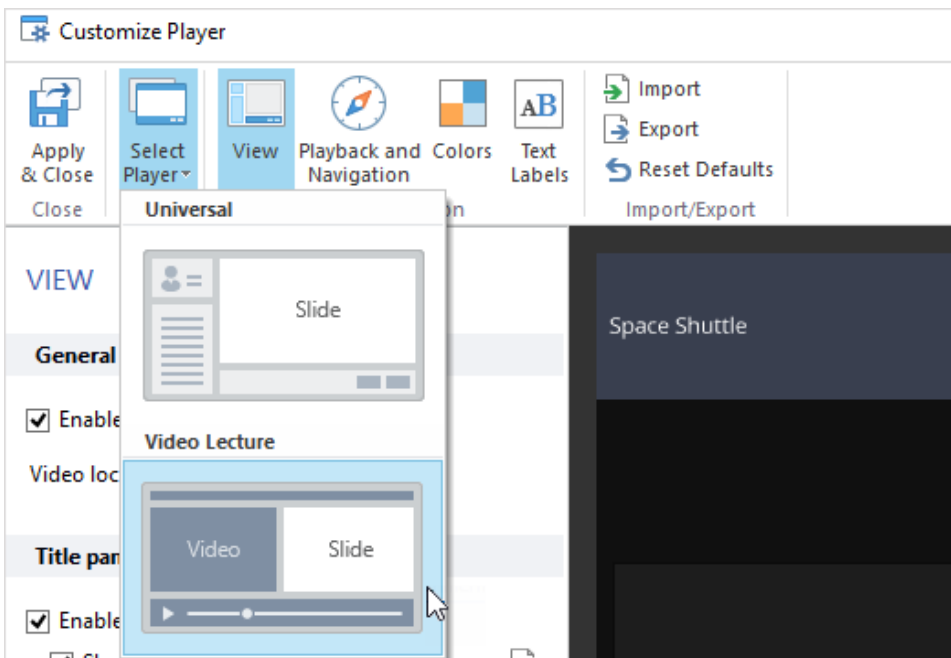
Even the most sophisticated video lecture can still be made more effective, simply by giving your users a convenient way to view it. Combining presentation slides with a talking head or explainer video is easier now than ever before, thanks to the Video Lecture Player.

To select the Video Lecture Player for your course:

1. Click **Player** on the toolbar.

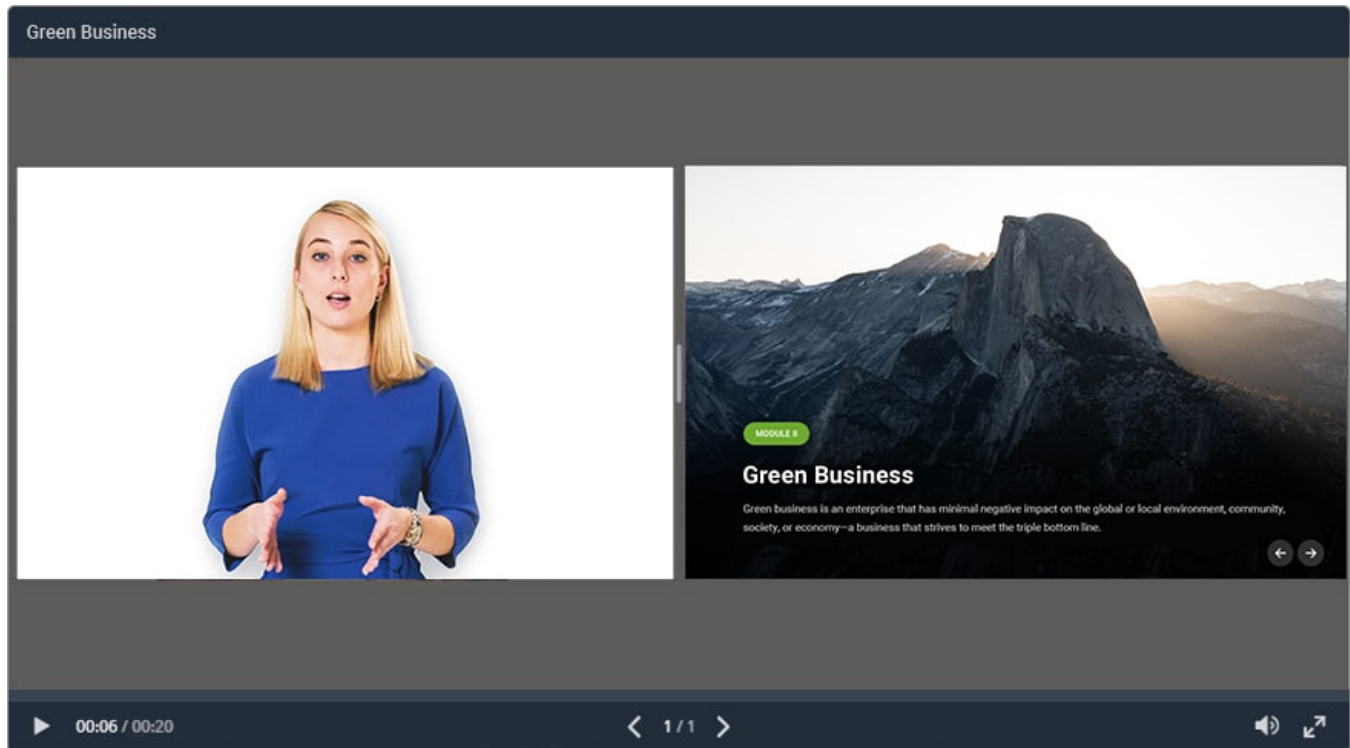


2. In the Customize Player window, select **Video Lecture** from the Player menu.



3. Make the changes to the player layout, color scheme or text labels and click **Apply & Close** to save the changes.

When you open your course, it will be displayed in the Video Lecture Player. If you have set up automatic [layout changes in Slide Properties](#), they will occur automatically as the slides progress.



Regardless of the layout, you have chosen, you can always change the proportions of the slide and video simply by clicking and dragging anywhere on their surface.