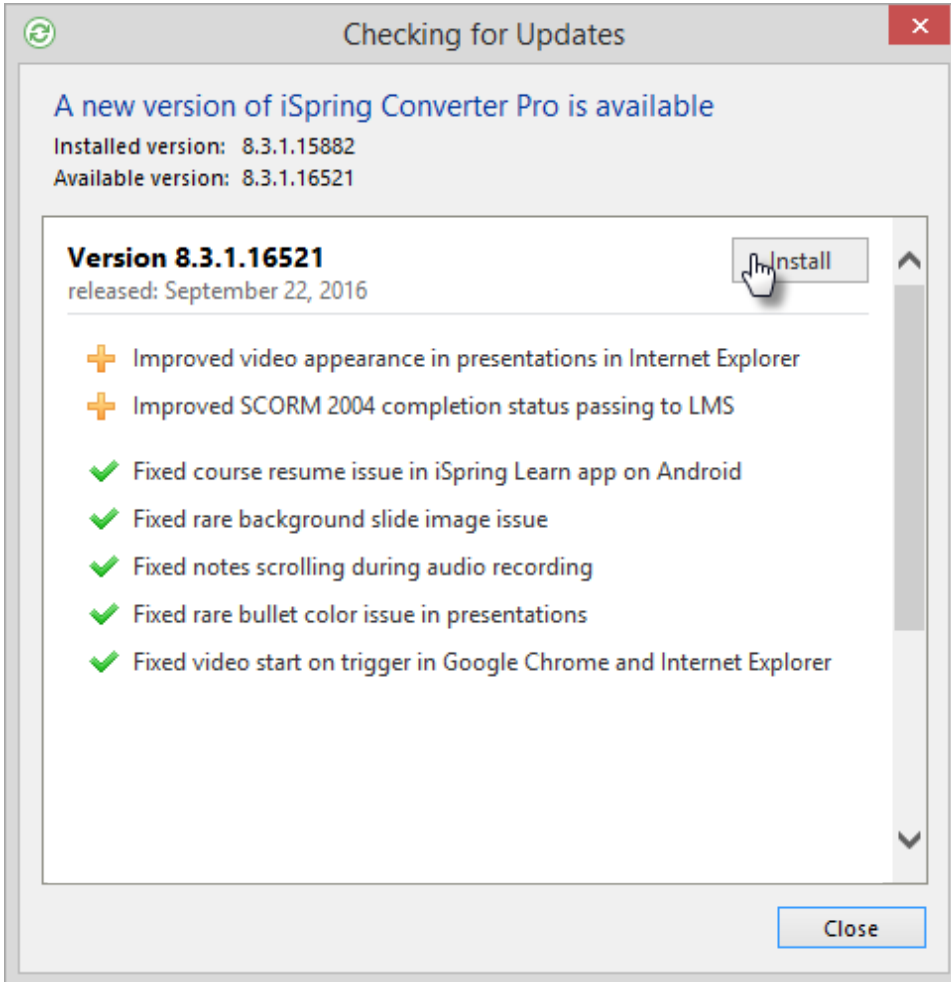


Updating iSpring Converter Pro

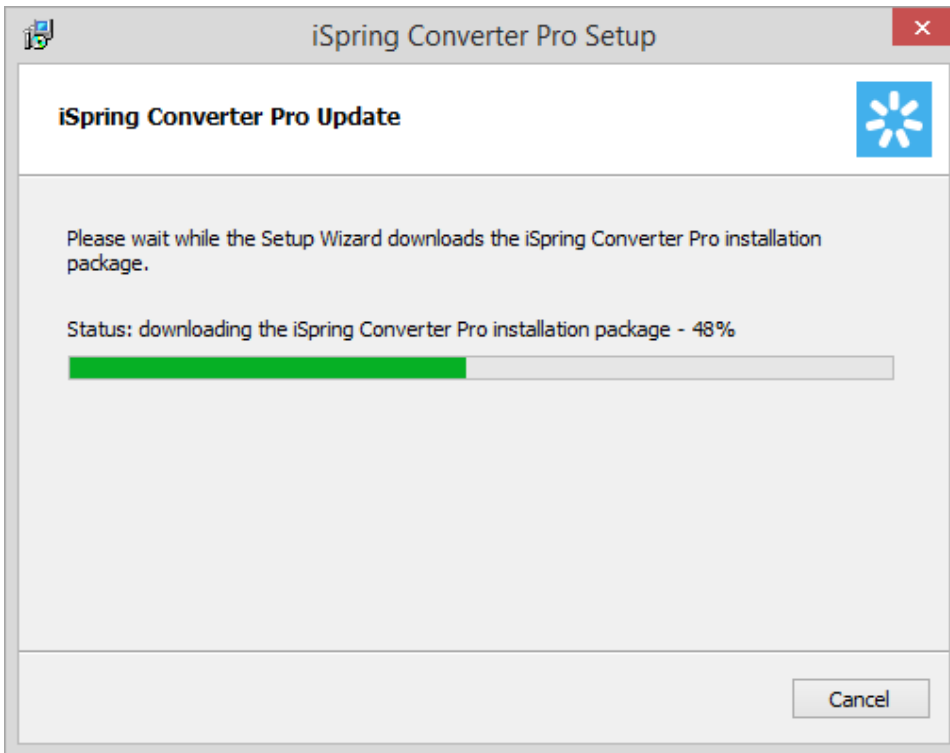
When a new iSpring Converter Pro version is released, you will see a notification on the toolbar. The red number indicates how many updates have been released since the last time you updated. To get started, click the **Update** button on the toolbar and follow the steps of the update wizard.



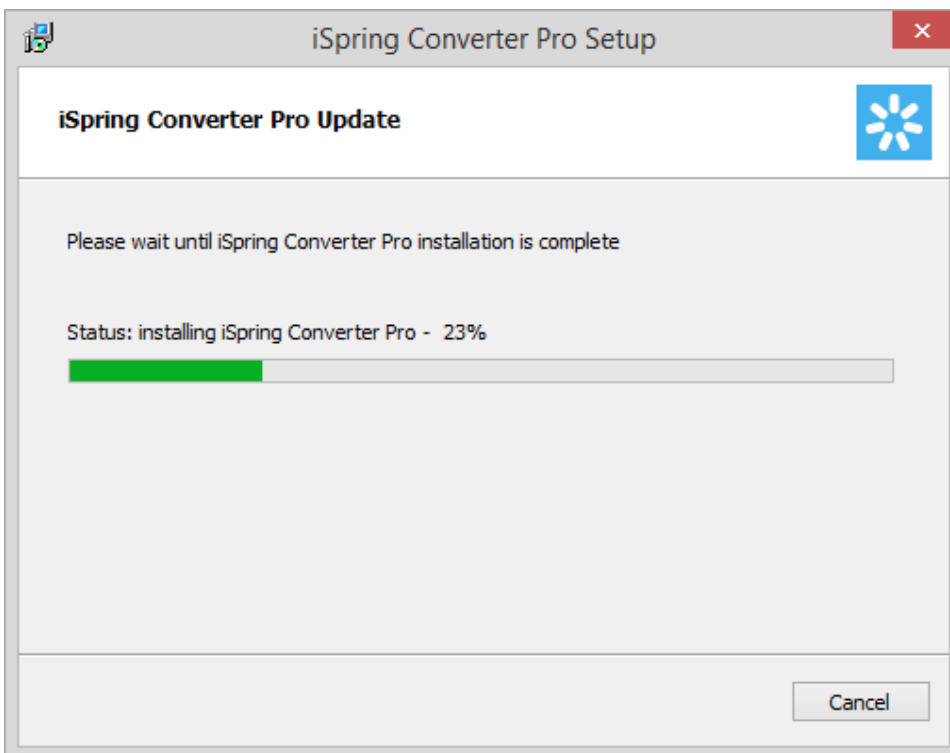
1. In the new window, you will see your currently installed version, the latest version, and a list of improvements and fixes in the update. Click **Install**.



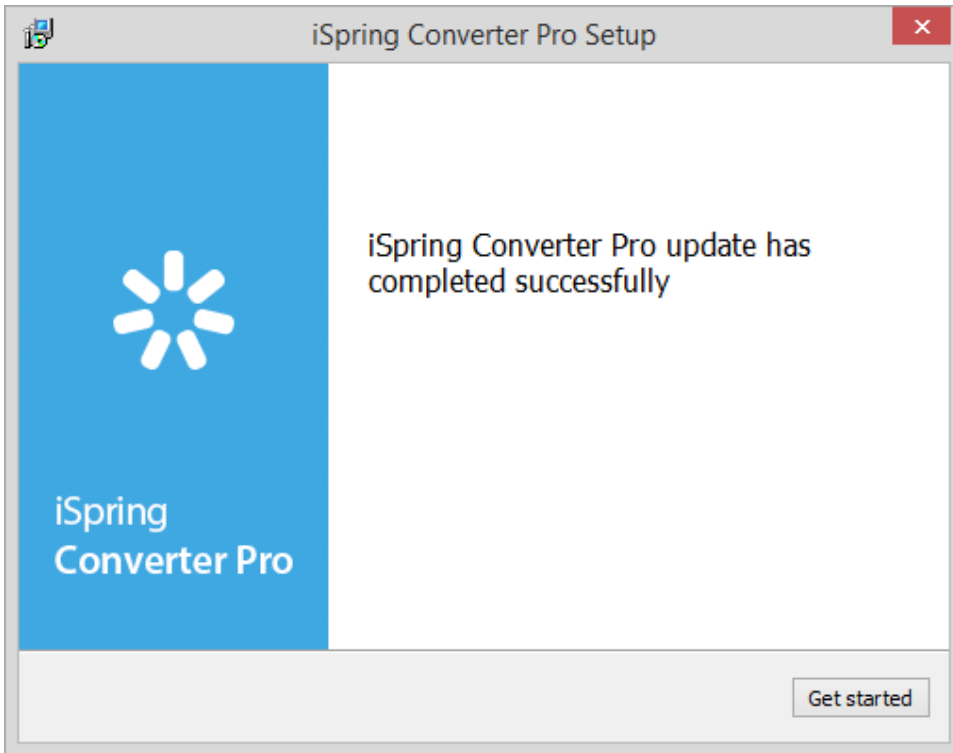
2. In the User Account Control click **Yes**, to continue.
3. The update wizard will download the files of the new version. When the download is complete, close all PowerPoint windows and click **Next**.



4. Then, the wizard will install the update.



5. After installation is complete, click **Get started** to start using the latest version of iSpring Converter Pro.



Any updates available after your Maintenance Plan expires are available on a trial basis. If your Maintenance has expired, you will see a notification window. Just click **Renew Maintenance** on the toolbar to renew your subscription and use the latest version of iSpring Converter Pro.