

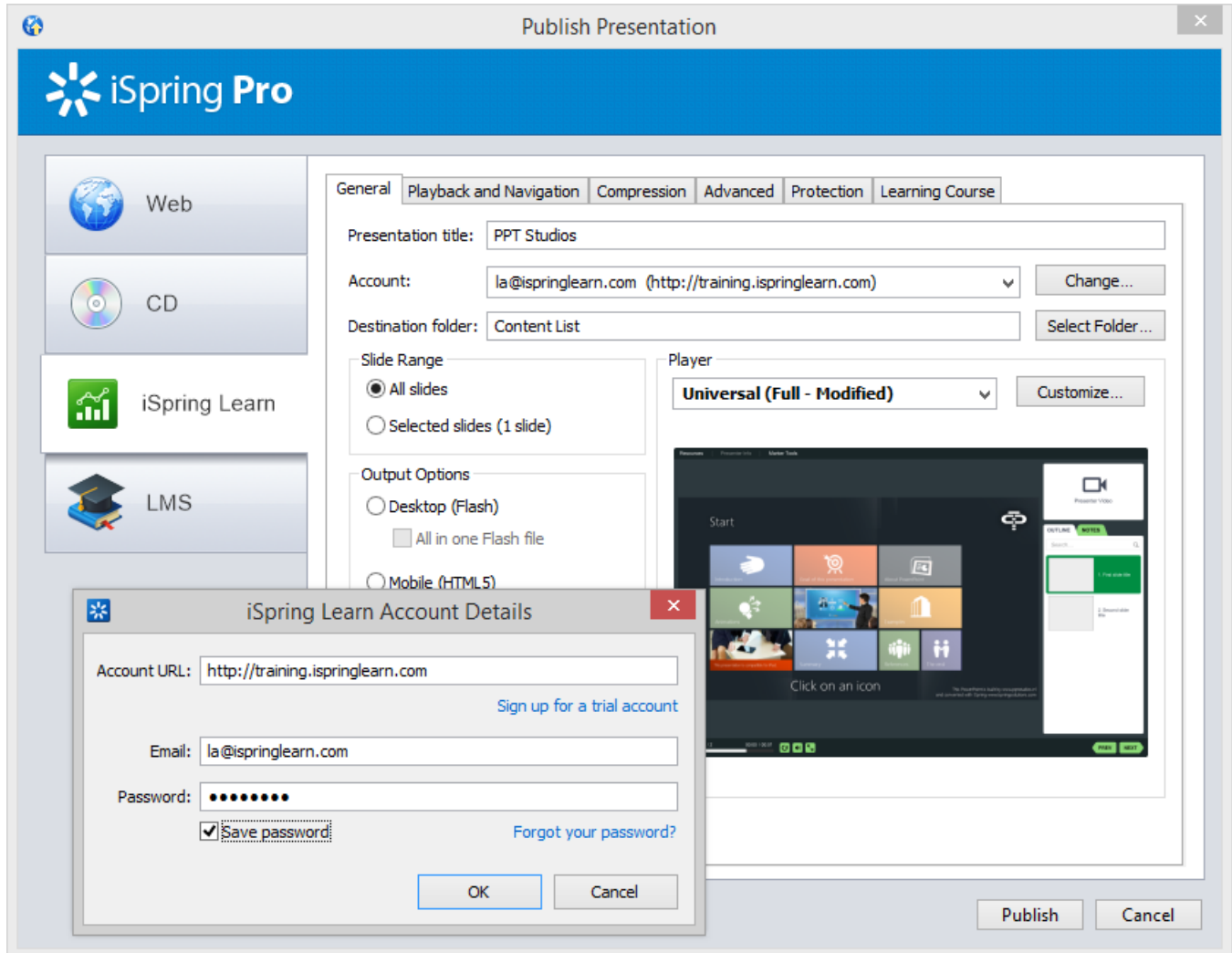
# Publish from iSpring Pro

You can download iSpring Pro from the [Download](#) page of the [iSpring Solutions](#) website. Please refer to [iSpring Pro](#) online documentation for more information on the trial version limitations, license activation, etc.

## Use iSpring Pro to Publish Content to iSpring Learn

Please follow a few simple steps to publish your content from iSpring Pro to your iSpring Learn account.

It's necessary to specify your access parameters (account details) in order to upload your content to iSpring Learn. The good news is that iSpring products automatically remember your parameters once you've entered them. You do not have to type them in every time you log in.



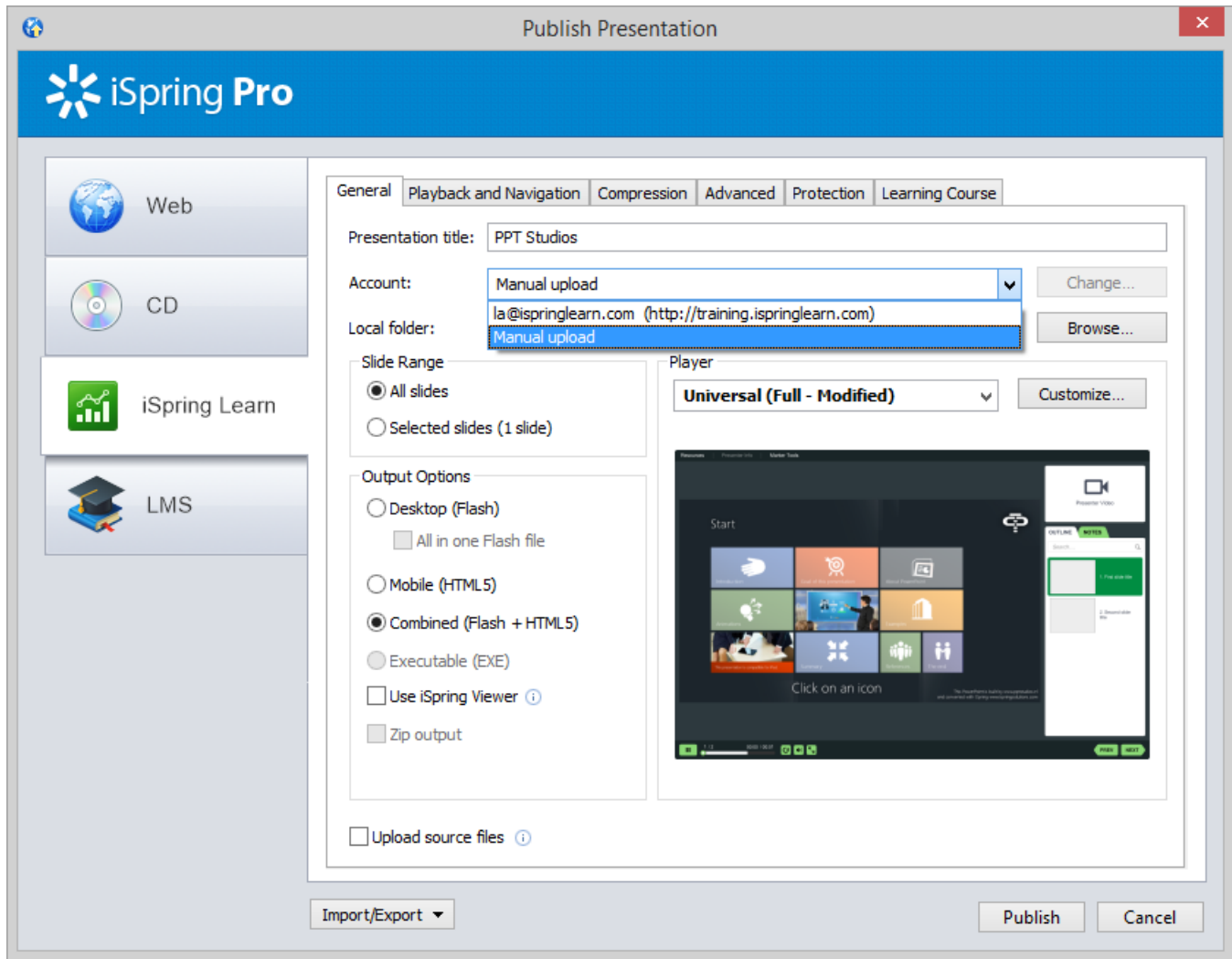
1. In your PowerPoint window, open the iSpring Pro tab.
2. Click the **Publish** button.
3. Open the **iSpring Learn** tab.
4. Click the **Change** button to open the "iSpring Learn Account Details" dialog.
5. Enter your Account URL, Email and Password that you use to access iSpring Learn and click **OK**.
6. Enter presentation title.
7. If you want to specify individual settings to publish your presentation, go through the **Playback and Navigation**, **Compression**, **Advanced**, **Protection** tabs
8. Click the **Publish** button.
9. The program will convert your presentation to Flash and then upload it to your iSpring Learn account. Once your content is successfully uploaded, you will see the dialog "Uploading complete" that gives you options to either open your presentation in iSpring Learn or to close the dialog.

If the content uploading process fails, please refer to the [iSpring Knowledge Base](#), [iSpring Community Forum](#) or contact our [Support Team](#).

**Note:** Every element of your content has to have a unique title. If you put in the title that has been already given to any other element of your content, iSpring asks you to either replace the existing element of your content or rename the newly-uploaded file.

## Manual Upload to iSpring Learn

If you don't have Internet connection or use Proxy server to publish the presentation, you can upload the presentation to iSpring Learn manually:



1. Choose **Manual Upload** in the **Account** drop-down list.
2. In the **Local folder** field you can specify a local folder or network you'd like to save the presentation to.
  - a. Type in the path to the destination folder manually.  
or
  - b. Click the **Browse** button on the right of the **Local folder** field, select the folder needed and click **OK**.
3. To publish your presentation, click the **Publish** button.

Once the presentation is published, the file with an \*.ismpkg extension will appear in the folder you have specified. Upload this file via [iSpring Learn Web interface](#).