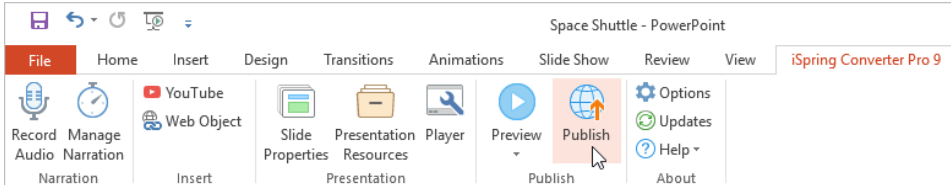


# Publishing from iSpring Converter Pro

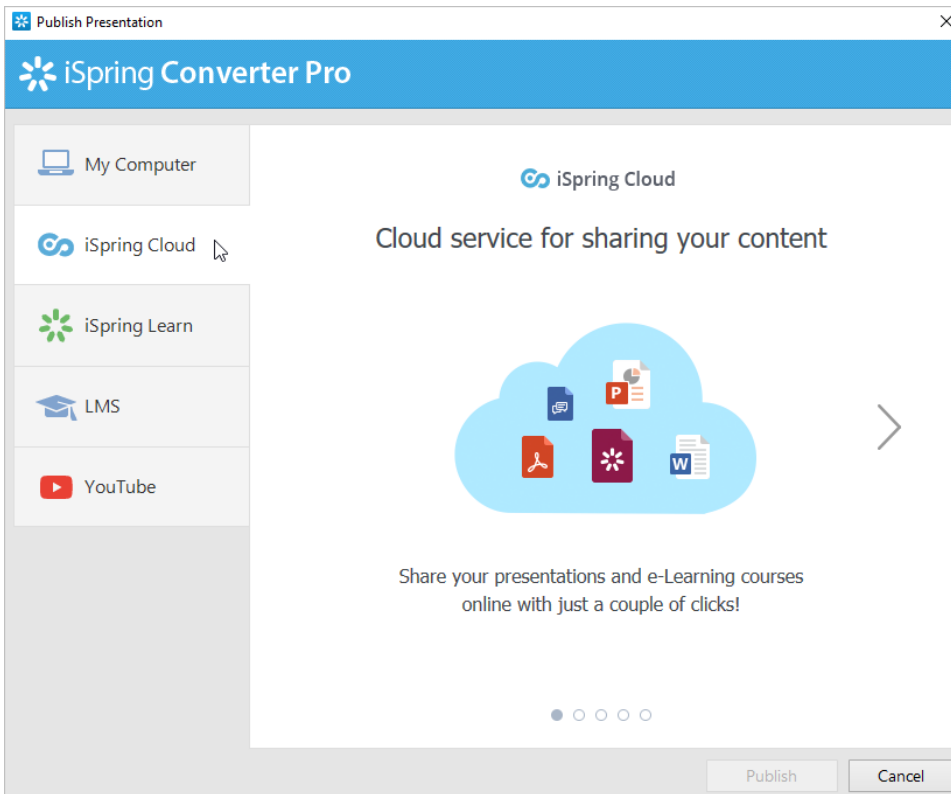
*iSpring Cloud* is the fastest and easiest way to post all your iSpring presentations and courses on the Internet. You can upload your courses, presentations, quizzes, interactions, and other iSpring content to the cloud directly from the iSpring program interface. The content will be uploaded to your personal storage, and then you can easily share it.

To publish your presentation to iSpring Cloud, follow the instructions below:

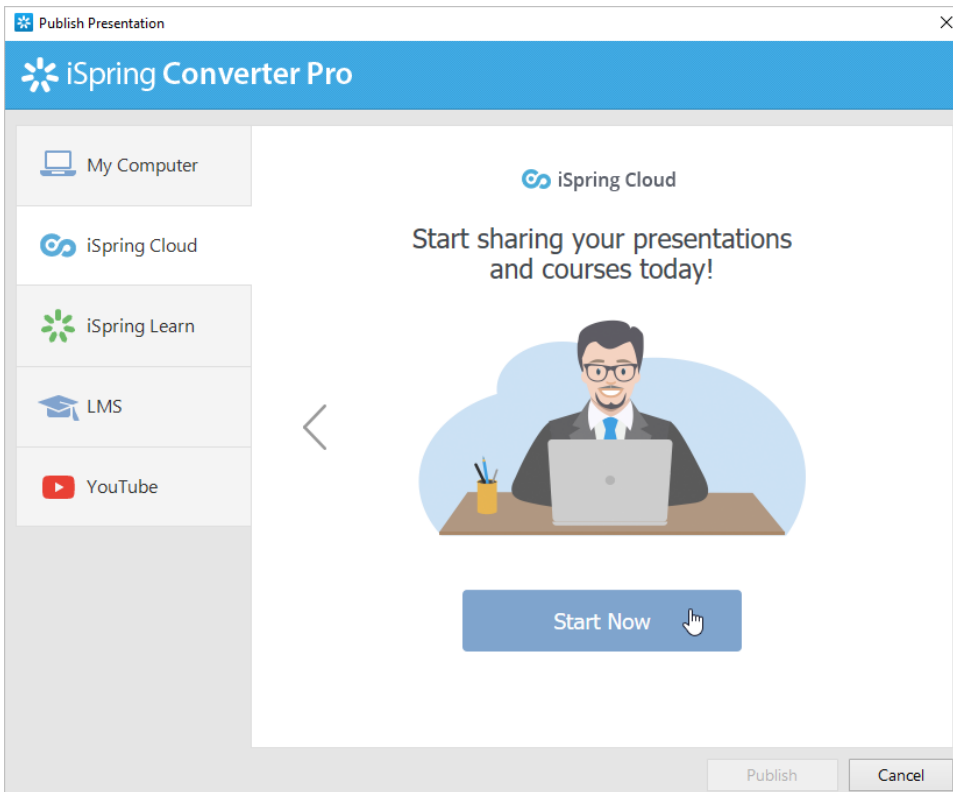
1. Click **Publish** on the iSpring Converter Pro toolbar.



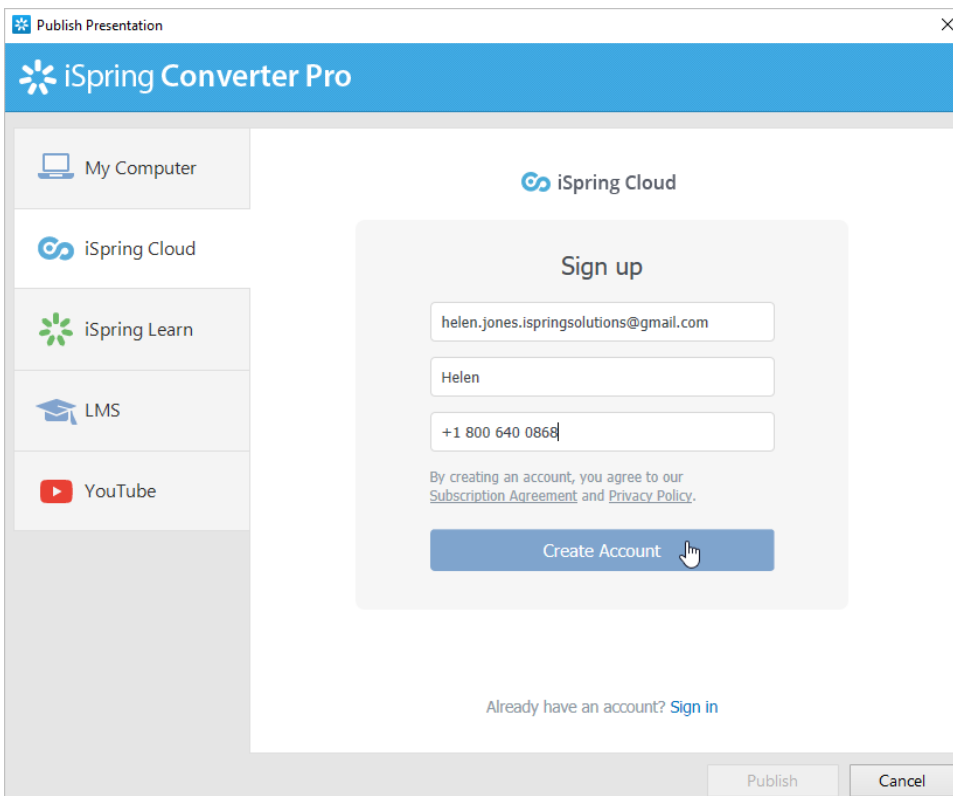
2. Choose the **iSpring Cloud** tab.



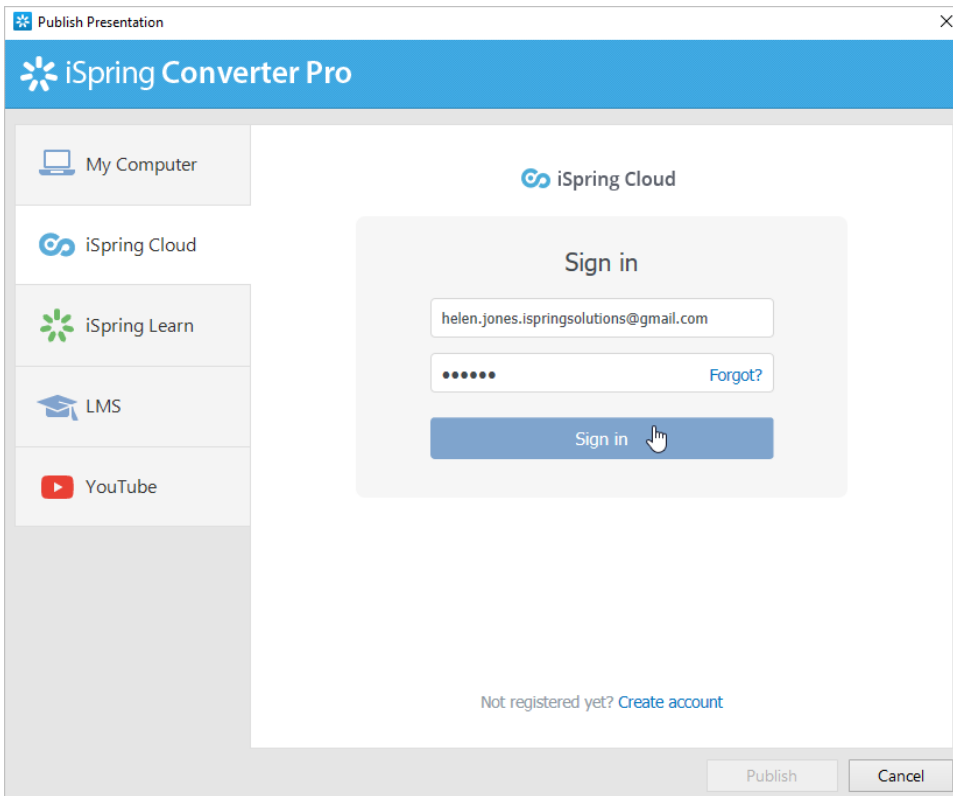
3. Browse through the picture gallery and click **Start Now**.



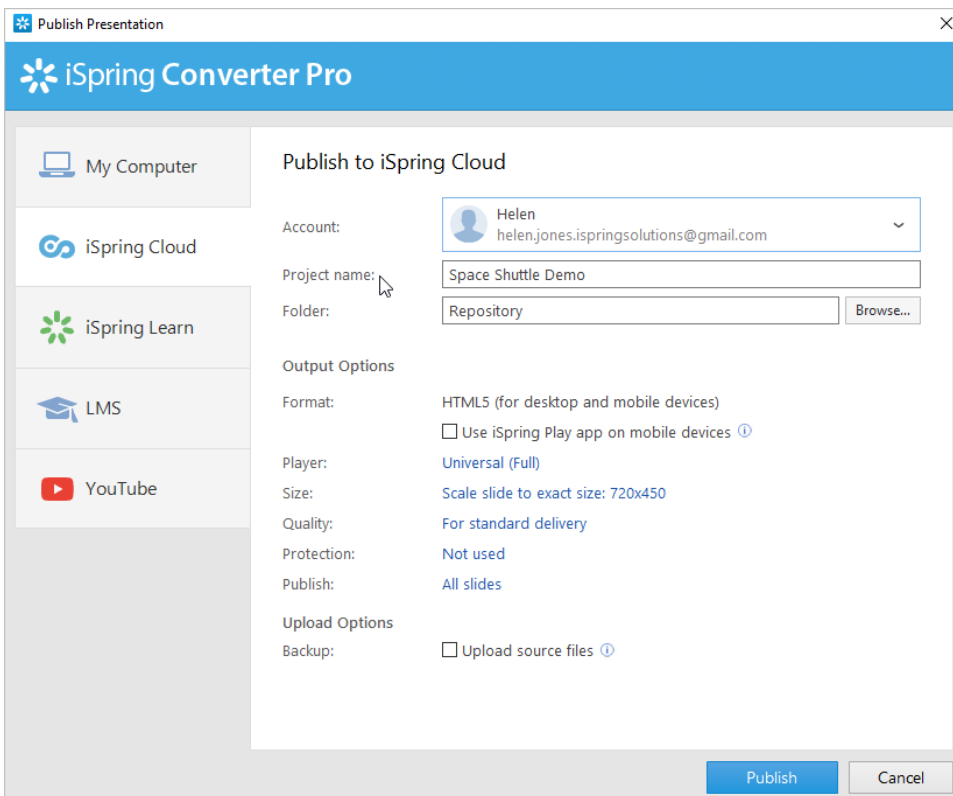
4. Create a new free iSpring Cloud account right in the publishing window. Enter your email, name and phone number and click **Create Account**. You will receive an email with your login details.



5. If you are already registered, click the **Sign in** link at the bottom of the window and enter your email and password for your iSpring Cloud account. Then click **Sign In**. The specified data will be saved in iSpring Converter Pro, and you do not have to enter it every time.



6. Enter the name of the course in the **Project Name** field. By default, the name is the same as the PowerPoint presentation.



7. Click **Browse** to the right of the **Destination folder** field and select the folder to upload your content. By default, your presentation will be uploaded to the general content list (Repository).

**Publish Presentation**

**iSpring Converter Pro**

**My Computer**

**iSpring Cloud**

**iSpring Learn**

**LMS**

**YouTube**

**Publish to iSpring Cloud**

Account: Helen  
helen.jones.ispringsolutions@gmail.com

Project name:

Folder:  **Browse...**

**Output Options**

Format: HTML5 (for desktop and mobile devices)

☐ Use iSpring Play app on mobile devices ⓘ

Player: Universal (Full)

Size: Scale slide to exact size: 720x450

Quality: For standard delivery

Protection: Not used

Publish: All slides

**Upload Options**

Backup: ☐ Upload source files ⓘ

**Publish** **Cancel**

8. Select the **Use iSpring Play app on mobile devices** checkbox if you want to access your presentation on iPhone, iPad and Android devices in the iSpring Play app. Then [configure the rest of the settings](#).

**Publish Presentation**

**iSpring Converter Pro**

**My Computer**

**iSpring Cloud**

**iSpring Learn**

**LMS**

**YouTube**

**Publish to iSpring Cloud**

Account: Helen  
helen.jones.ispringsolutions@gmail.com

Project name:

Folder:  **Browse...**

**Output Options**

Format: HTML5 (for desktop and mobile devices)

☒ Use iSpring Play app on mobile devices ⓘ

Player: Universal (Full)

Size: Scale slide to exact size: 720x450

Quality: For standard delivery

Protection: Not used

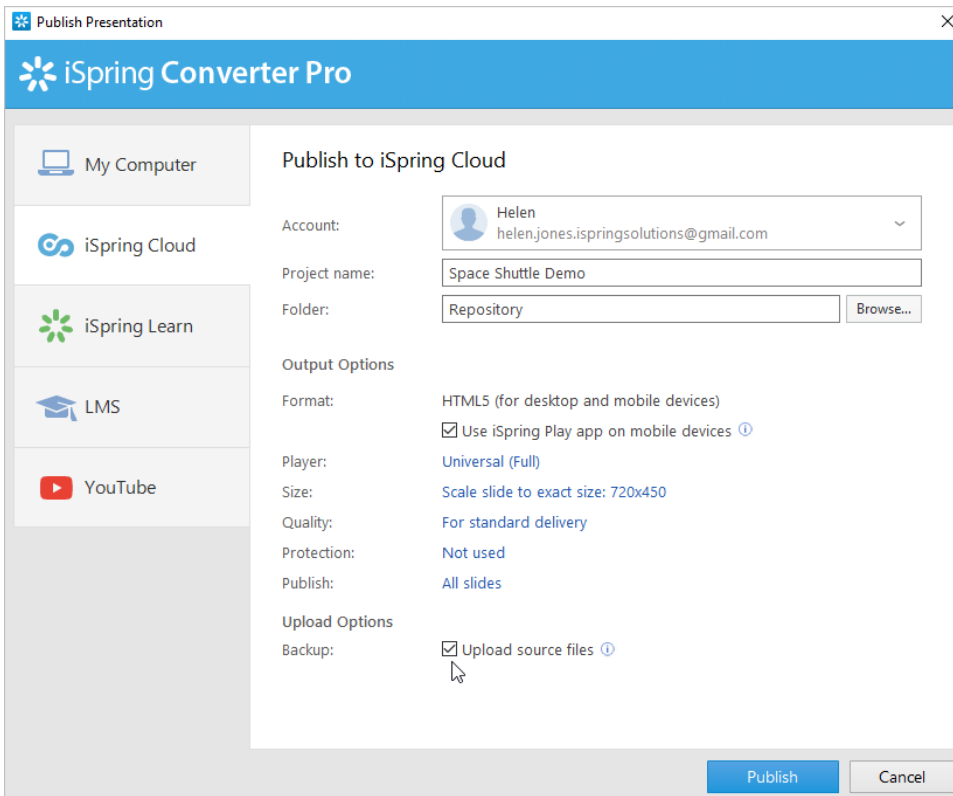
Publish: All slides

**Upload Options**

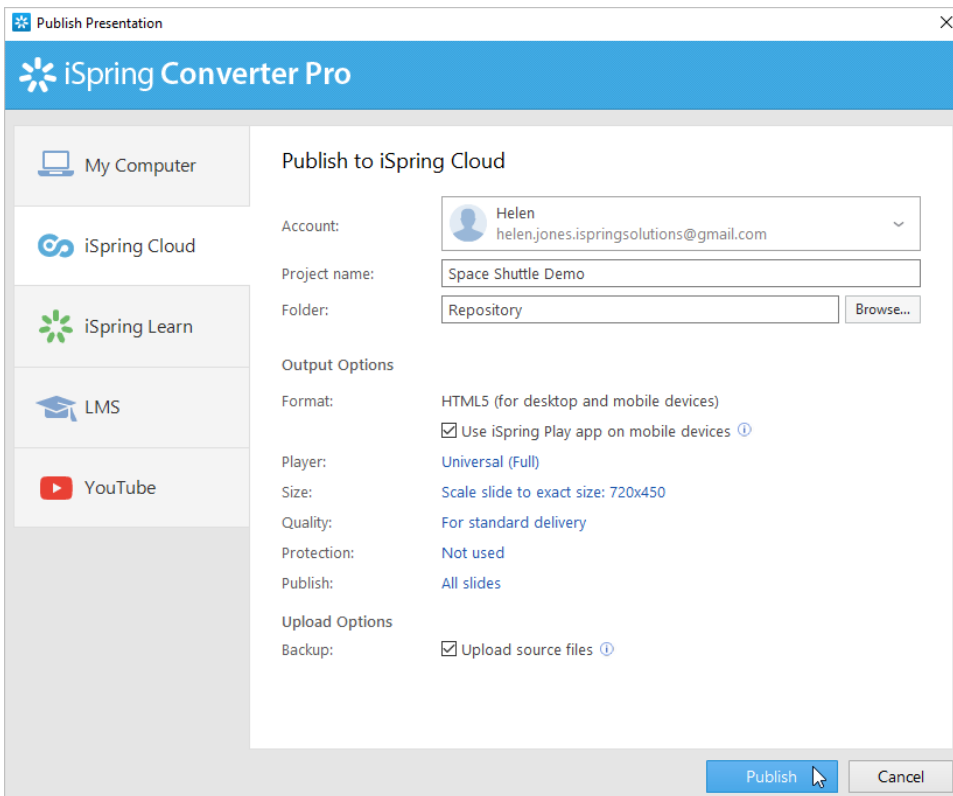
Backup: ☐ Upload source files ⓘ

**Publish** **Cancel**

9. In the Upload Options section, select **Upload source files** if you want to save the PowerPoint source files of the presentation in iSpring Cloud. That way, you can work on the course files with a team or store a backup copy of the course in the cloud.

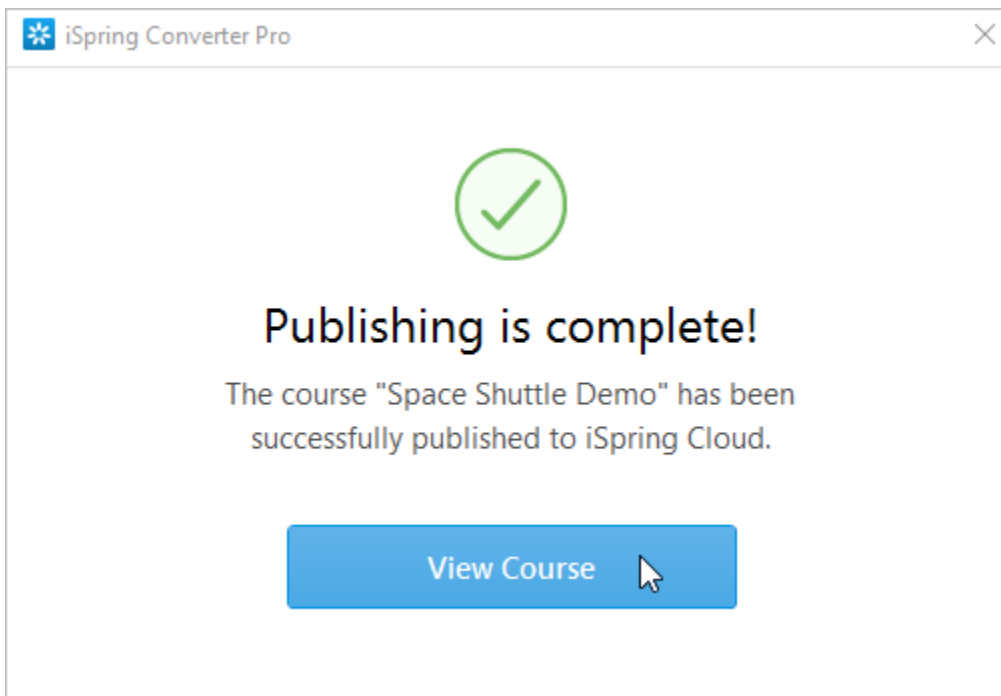


10. Click the **Publish** button.

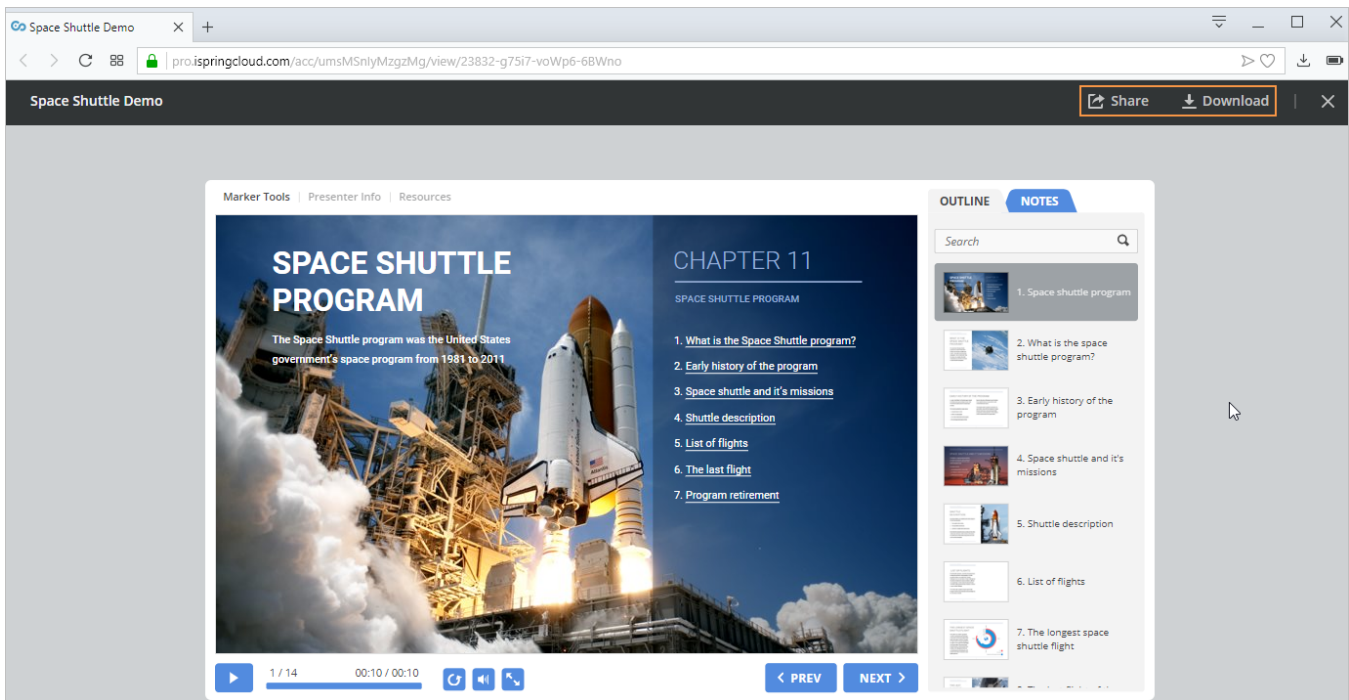


iSpring Converter Pro will convert your presentation to online format, and it will be available for viewing on any device from a computer to a smartphone. The program will upload your course and it will appear in the iSpring Cloud Repository.

When the publishing process is successfully completed, a new window will come up. To open the published course in the iSpring Cloud interface, click **View Course**.



You will see your presentation preview in the iSpring Cloud account. From there, you can share the course with your students or download it to your computer.



If you encounter problems publishing to iSpring Cloud, please refer to the [iSpring Knowledge Base](#) or [iSpring Community Forum](#), or contact our [Support Team](#).



Every element of your content has to have a unique title. If you put in a title that has already been assigned to any other element of your content, iSpring will ask you to either replace the existing element of your content or rename the newly uploaded file.

## Manual Upload to iSpring Cloud

If online publishing cannot be completed because of an antivirus program or a proxy server error, you can upload the presentation to iSpring Cloud manually via the [iSpring Cloud Web interface](#).

1. Go to the Account menu and select **Switch to offline mode**.

The screenshot shows the 'Publish Presentation' window in iSpring Converter Pro. On the left is a sidebar with icons for 'My Computer', 'iSpring Cloud', 'iSpring Learn', 'LMS', and 'YouTube'. The main area is titled 'Publish to iSpring Cloud'. It contains the following fields and options:

- Account:** A dropdown menu showing 'Helen' with email 'helen.jones.ispringsolutions@gmail.com'. A context menu is open over this field with two options: 'Switch to offline mode' (highlighted) and 'Logout'.
- Project name:** A text field containing 'Space Shuttle Demo'.
- Folder:** A text field containing 'Repository'.
- Output Options:**
  - Format:** 'HTML5 (for desktop and mobile devices)'
  - ☒ 'Use iSpring Play app on mobile devices' (with an info icon)
  - Player:** 'Universal (Full)'
  - Size:** 'Scale slide to exact size: 720x450'
  - Quality:** 'For standard delivery'
  - Protection:** 'Not used'
  - Publish:** 'All slides'
- Upload Options:**
  - ☒ 'Backup: Upload source files' (with an info icon)

At the bottom right are 'Publish' and 'Cancel' buttons.

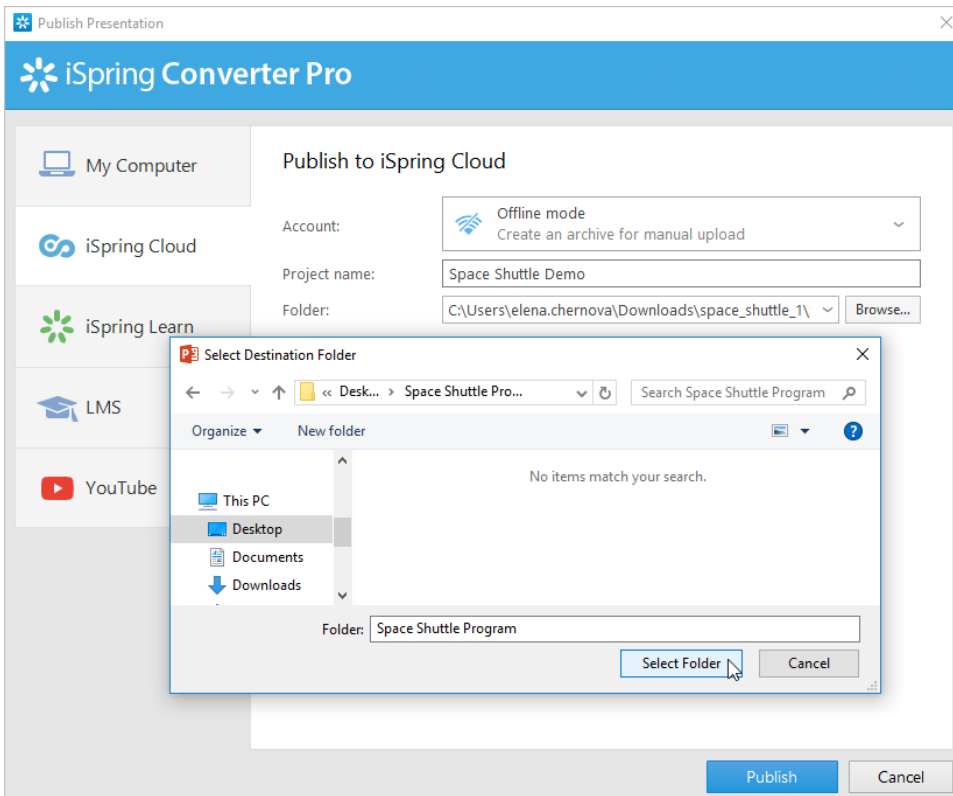
2. Enter a name in the **Project name** field. By default, the name is the same as the PowerPoint presentation.

The screenshot shows the 'Publish Presentation' window in iSpring Converter Pro, now in 'Offline mode'. The sidebar is the same. The main area is titled 'Publish to iSpring Cloud'.

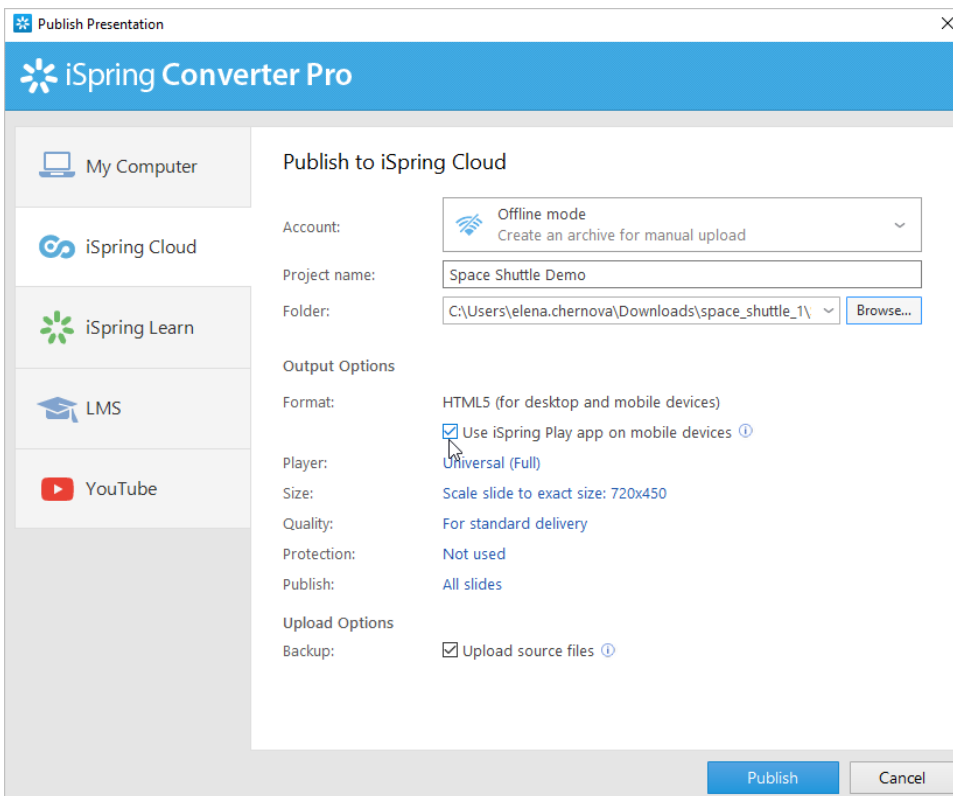
- Account:** A dropdown menu showing 'Offline mode' with the subtext 'Create an archive for manual upload'.
- Project name:** A text field containing 'Space Shuttle Demo'. A mouse cursor is hovering over this field.
- Folder:** A text field containing 'C:\Users\elena.chernova\Downloads\space\_shuttle\_1\' followed by a dropdown arrow. To the right of the field is a 'Browse...' button.
- Output Options:**
  - Format:** 'HTML5 (for desktop and mobile devices)'
  - ☒ 'Use iSpring Play app on mobile devices' (with an info icon)
  - Player:** 'Universal (Full)'
  - Size:** 'Scale slide to exact size: 720x450'
  - Quality:** 'For standard delivery'
  - Protection:** 'Not used'
  - Publish:** 'All slides'
- Upload Options:**
  - ☒ 'Backup: Upload source files' (with an info icon)

At the bottom right are 'Publish' and 'Cancel' buttons.

3. Specify the local or network folder in which the course will be saved in the **Local folder** field. To do this, click the **Browse** button on the right.

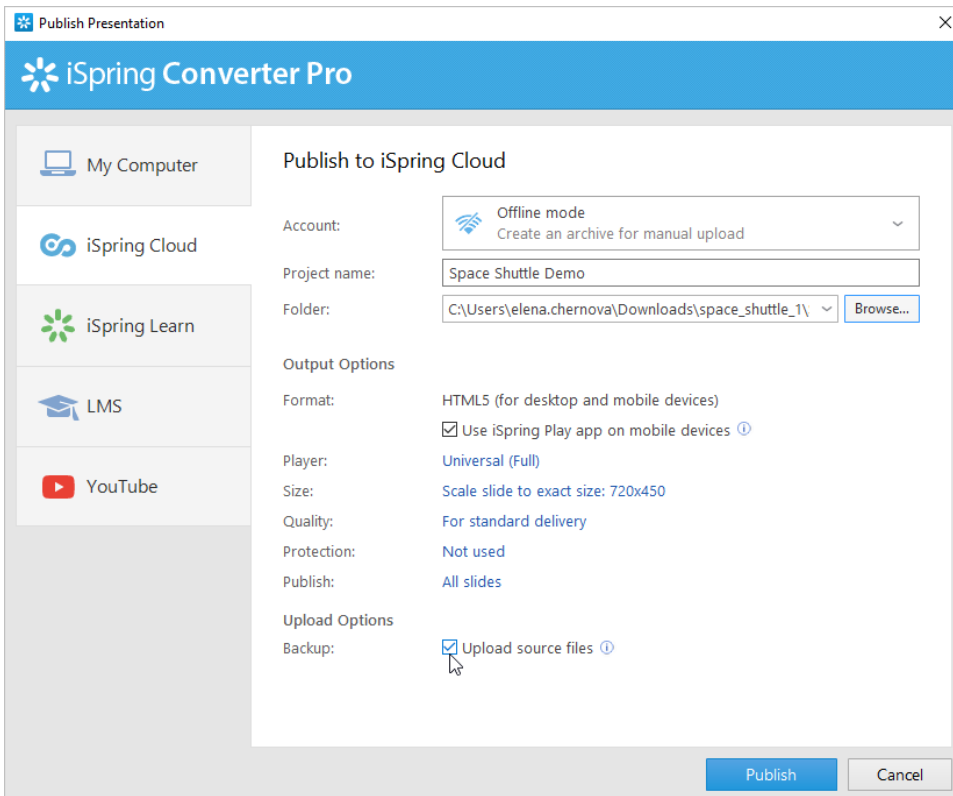


4. In addition, you can select the option [Use iSpring Play app on mobile devices](#) and configure [other publishing options](#).

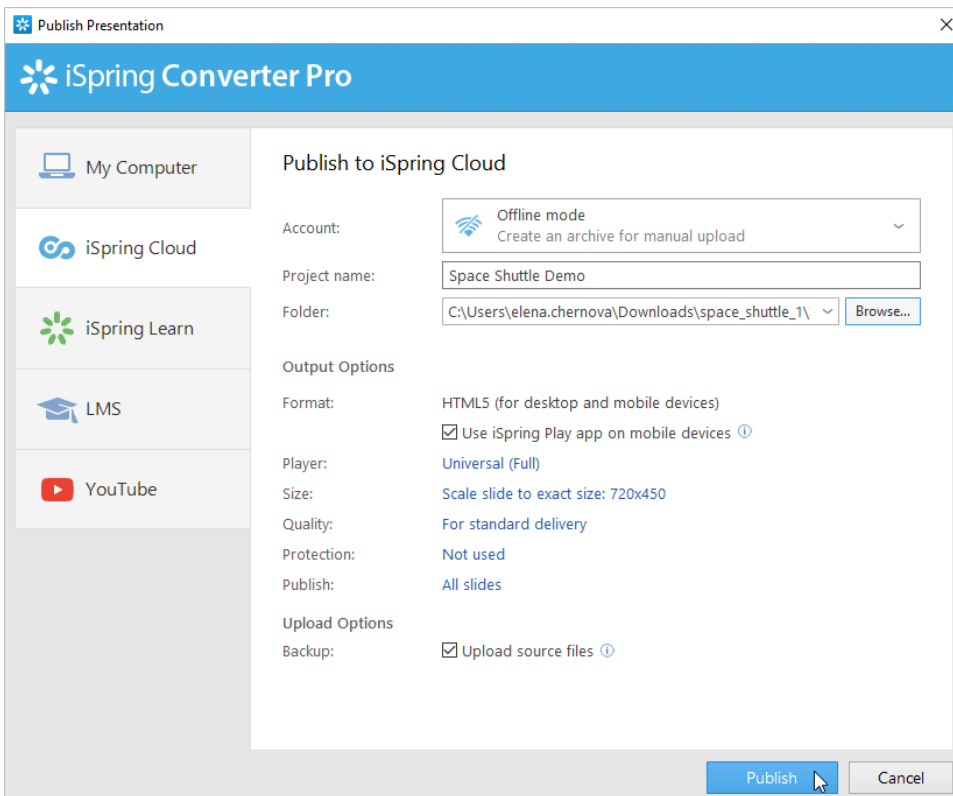


5. In the Upload Options section, click **Upload source files** if you want to save the source course files in iSpring Cloud. That way, you can work on the project in a team or store a backup copy of the course in the cloud.

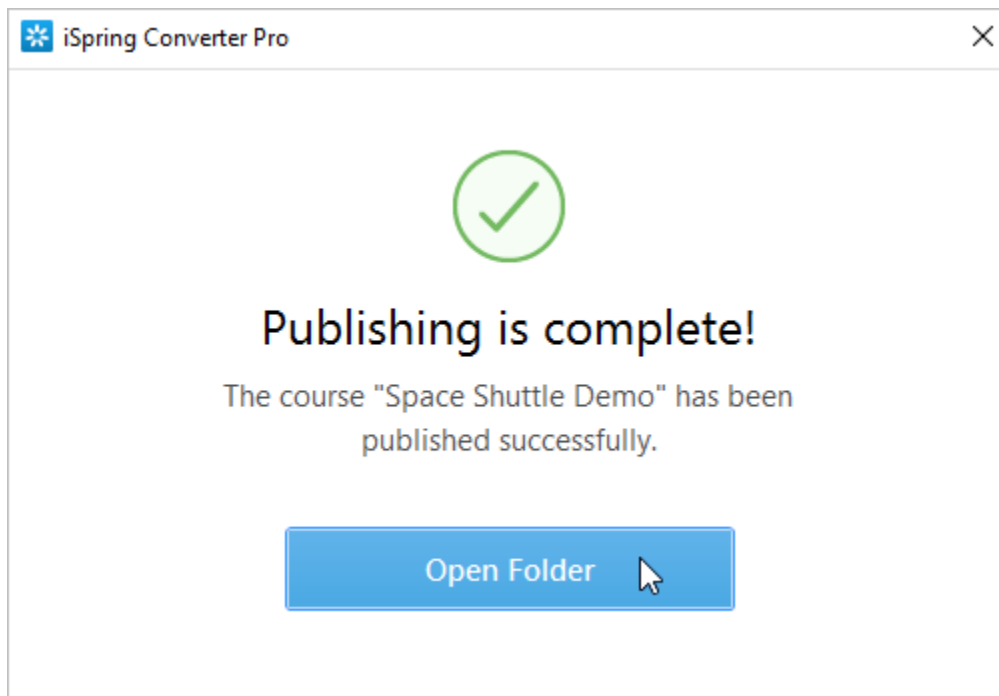




6. Click the **Publish** button.



After publishing, click the **Open Folder** button.



iSpring Converter Pro creates a package ready for uploading to the iSpring Cloud service. Now you can log into your iSpring Cloud account and upload this package at any convenient time. To learn more, read the detailed instructions for [uploading courses to iSpring Cloud via the web interface](#).

