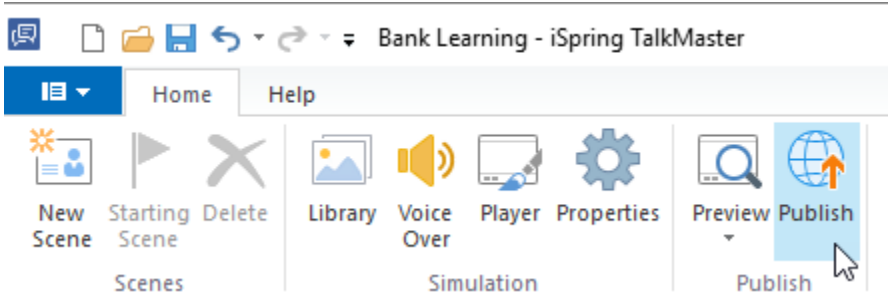


# Publishing to iSpring Cloud

**iSpring Cloud** is the fastest and easiest way to post all your iSpring simulations and courses on the Internet. You can upload your courses, simulations, quizzes, interactions, simulations and other iSpring content to the cloud directly from the iSpring program interface. The content will be uploaded to your personal storage, and then you can easily share it.

To publish your simulation to iSpring Cloud:

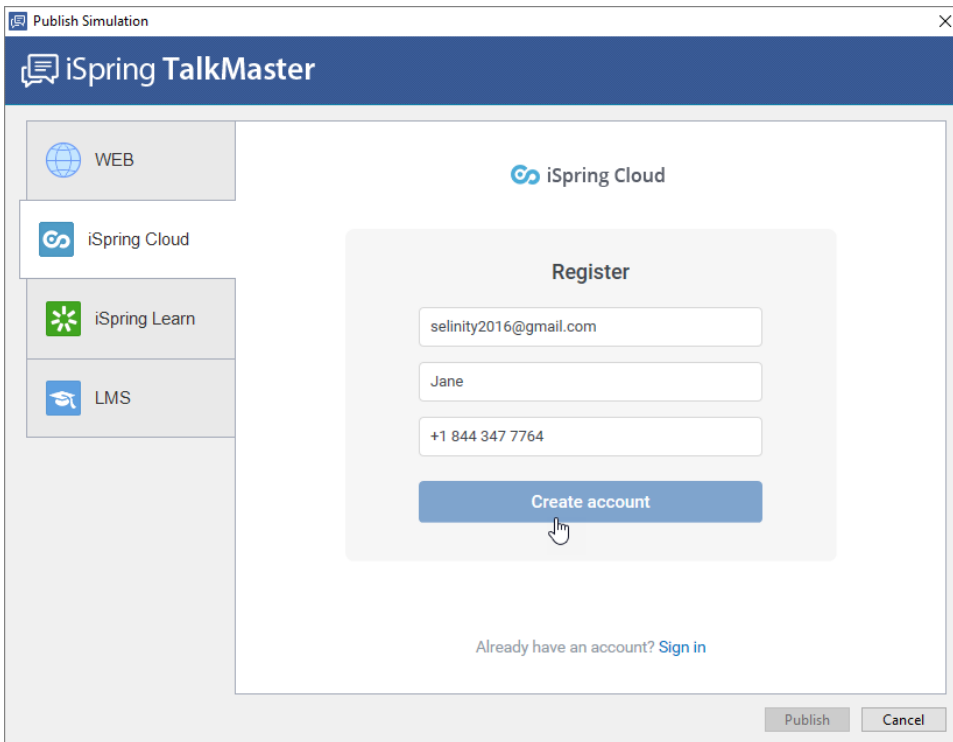
1. Click **Publish** on the toolbar.



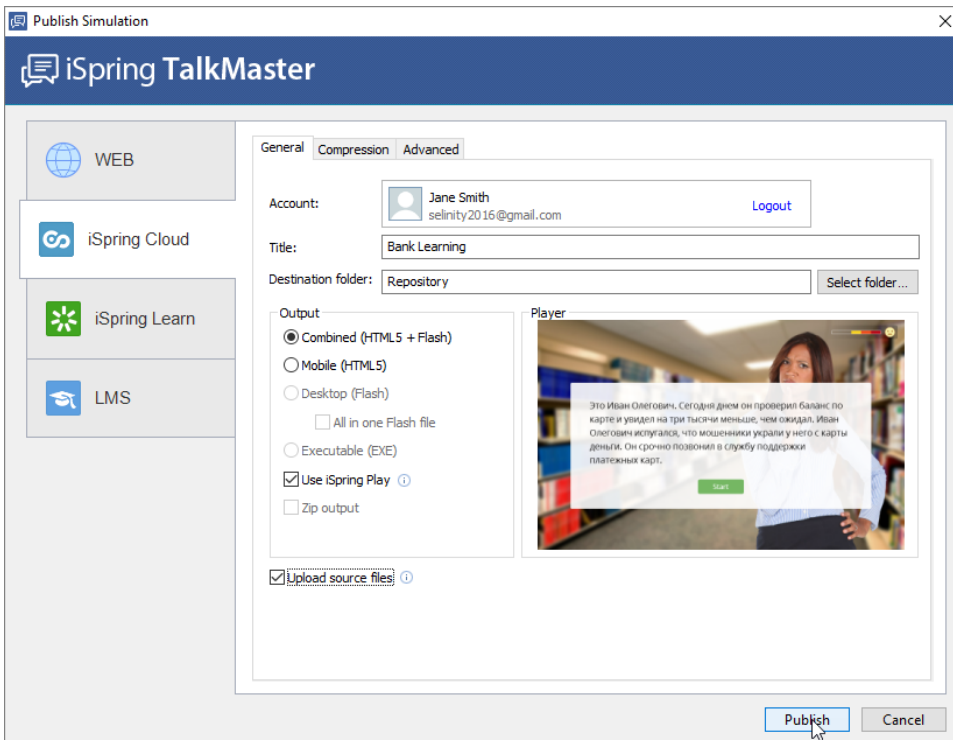
2. Choose the iSpring Cloud tab. Look through the picture gallery and click **Start Now**.



3. Sign up for a free account. Enter your email, name and phone number and click **Create account**.



4. If you already have an account, click the **Sign In** link at the bottom, enter your existing account details (Email and Password).
5. When you enter your account details, iSpring validates this data, and you will see your email address in the **Account** field.



6. Click **Select folder** on the right of the **Destination folder** field and select the folder to upload your content. By default, your simulation will be uploaded to the general content list (Repository).
7. Select the **Use iSpring Play** checkbox, if you want to access your simulation on iPhones, iPad and Android devices in the iSpring Play app.
8. Check the box **Upload source files** if you would like to upload the source files of your simulation to iSpring Cloud.
9. Click the **Publish** button.

iSpring TalkMaster will convert your simulation to Flash and HTML5 and then upload it to your iSpring Cloud account. This is a time consuming process and it may take a few minutes.

Once your content is successfully uploaded, you will see the dialog "Uploading complete". If the content uploading process fails, please refer to the [iSpring Knowledge Base](#), [iSpring Community Forum](#) or contact our [Support Team](#).



Every element of your content has to have a unique title. If you put in the title that has been already given to any other element of your content, iSpring asks you to either replace the existing element of your content or rename the newly-uploaded file.

If you don't have Internet connection or you use Proxy server to publish the simulation, you can upload the simulation to iSpring Cloud manually via [iSpring Cloud Web interface](#).