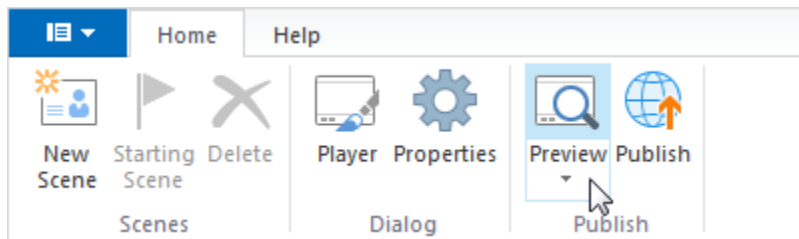


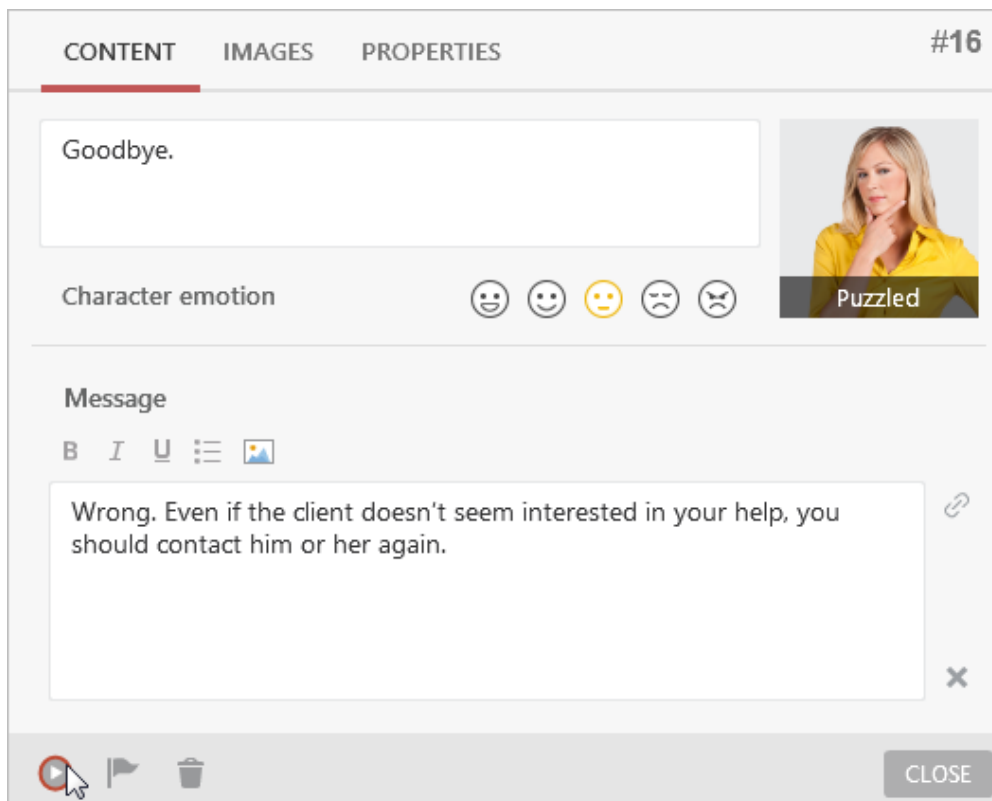
Preview a Simulation

Before publishing, you can easily preview the entire simulation, a particular scene or several scenes to test their look and functionality.

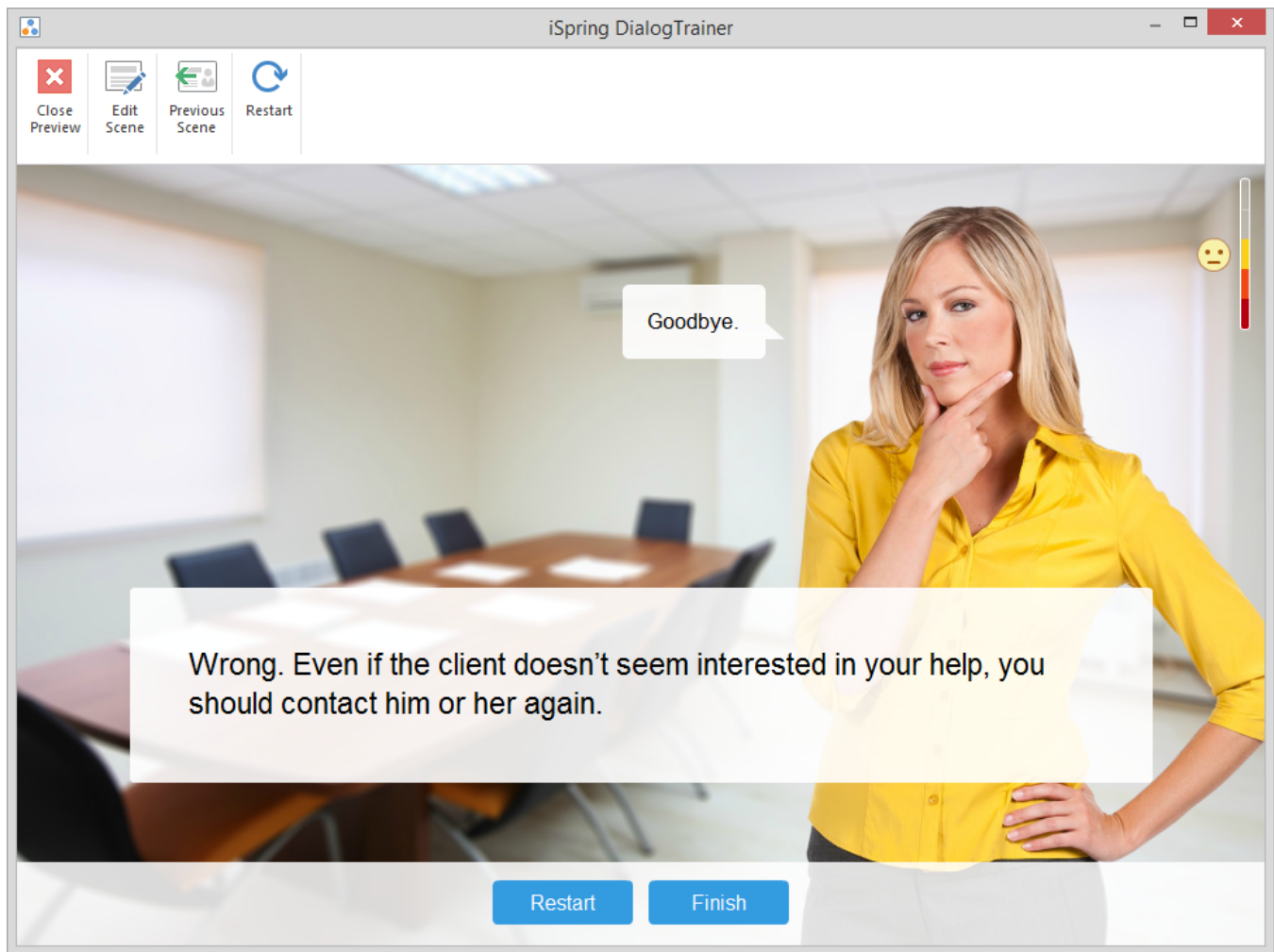
To preview your simulation, click the **Preview** button on the toolbar:



Or open a scene and click the **Preview** button right when editing your simulation.



The preview of your simulation will be displayed in a new window.



You can easily get back to editing your simulation by clicking the **Edit Scene** button on the toolbar or by closing the Preview window.