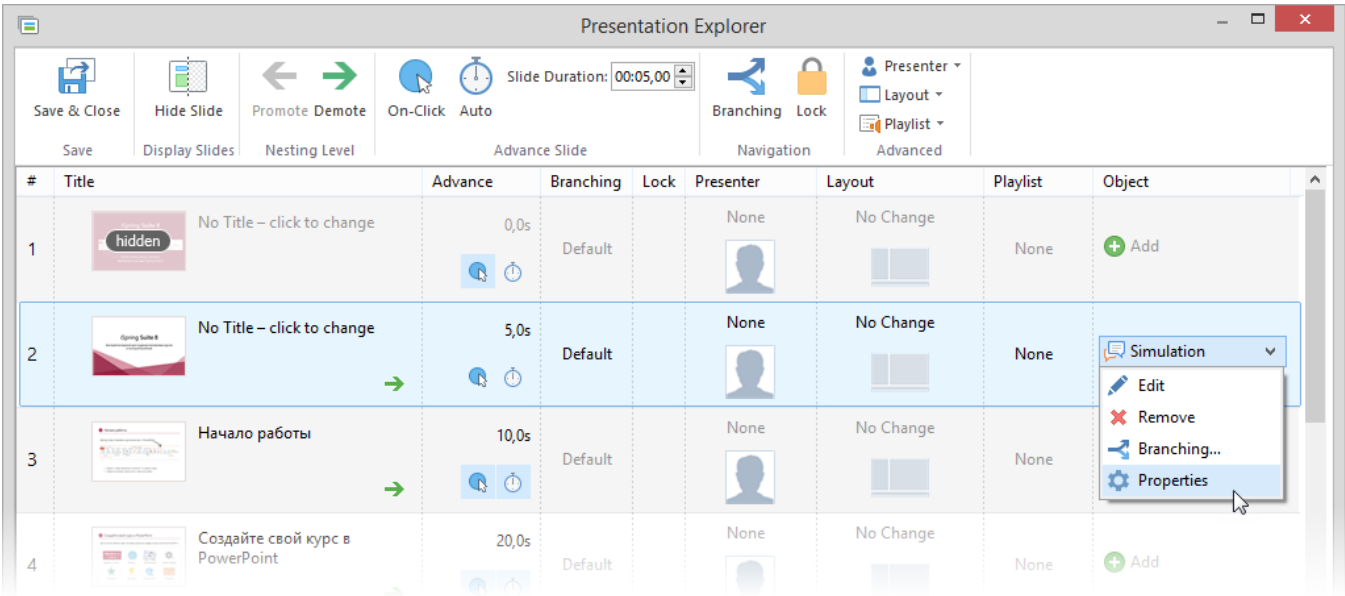


Simulation Properties

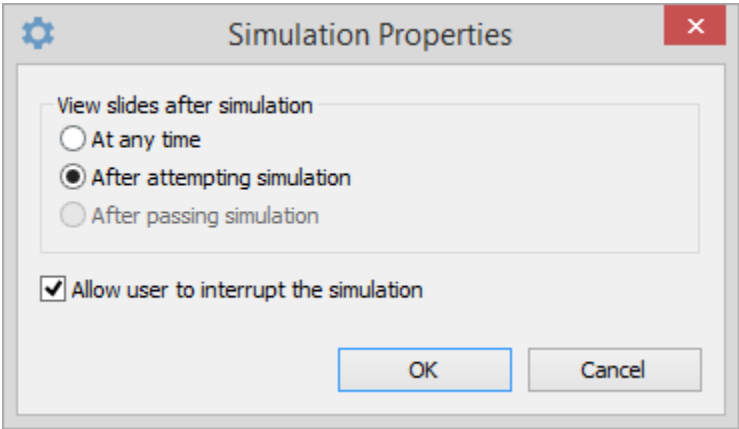
If you added a simulation to your course, the **Add** plus icons will be replaced with the **Simulation** menu. In the **Simulation Properties** window, you can allow or prevent users from viewing presentation's content after the slide with a simulation.

To edit simulation properties:

1. Click the **Simulation** button in the Object column
2. Select the **Properties** option in the drop-down menu



In the **Simulation Properties** window you can specify when a user will be able to view slides after the simulation.



Simulation properties	
View slides after simulation	Specify when users are allowed to view slides after the simulation: <ul style="list-style-type: none">• At any time• After attempting the simulation• After passing the simulation
Allow user to interrupt the simulation	If this checkbox is selected, the user will be able leave the simulation and proceed to another slide.