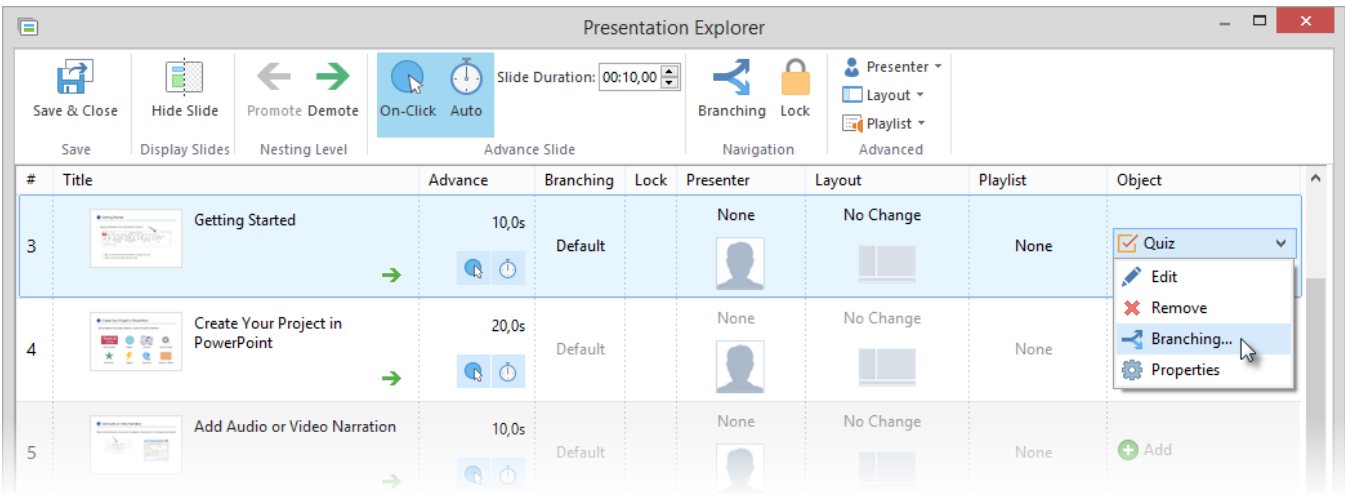
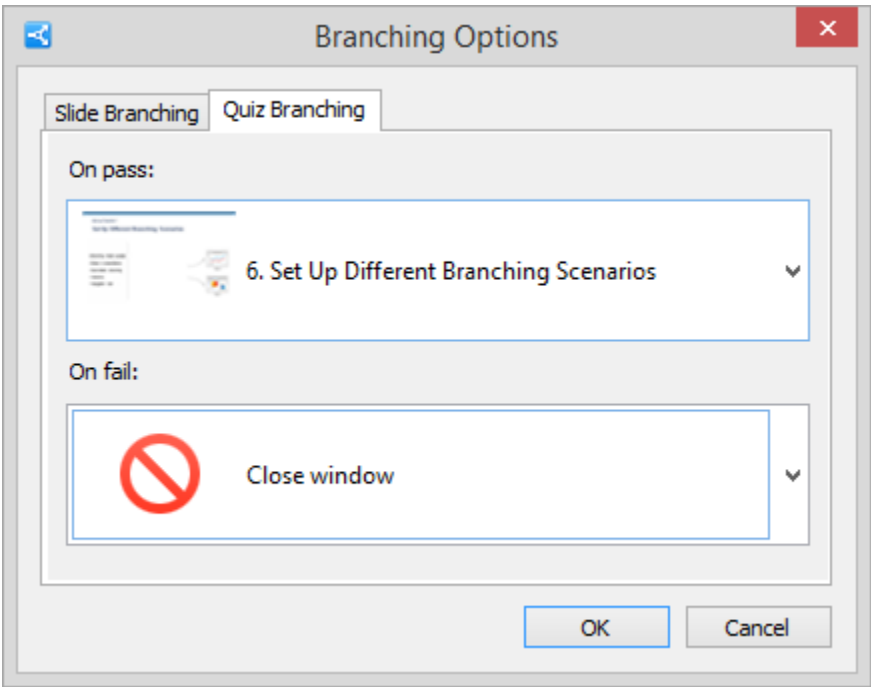


Quiz-based Branching

By adding branching to your quizzes, you can send a learner to a particular slide depending on his/her quiz results. Select **Branching** in the menu or on the toolbar to open the **Branching Options** window.



In the **Branching Options** window select the **Quiz Branching** tab to specify actions for the successful and unsuccessful completion of the quiz. By default, a user will be taken to the next slide.



Quiz properties

On pass	<p>This option defines what action will be performed on the click of the Finish button when the quiz is passed.</p> <p>The available actions:</p> <ul style="list-style-type: none"> • Go to the next slide • Close the window • Go to the slide with a specified number
On fail	<p>This option defines what action will be performed on the click of the Finish button when the quiz is failed. The available options:</p> <ul style="list-style-type: none"> • Go to the next slide • Close the window <p>Slide N (Go to the slide with a specified number)</p>

Additionally, you can specify the forward and backward actions that will be performed if a user skips the quiz.

Switch to the **Slide Branching** tab and adjust the navigation buttons (Skip Quiz/Previous) to take the learner to:

- the Next Slide/Previous Slide
- any particular slide.

The screenshot shows a dialog box titled "Branching Options" with a close button (X) in the top right corner. Inside the dialog, there are two tabs: "Slide Branching" (selected) and "Quiz Branching". Under the "Slide Branching" tab, there are two sections: "Forward branching (On skip quiz):" and "Backward branching:". Each section contains a large blue arrow icon and a dropdown menu. The "Forward branching" dropdown is set to "Next slide (default)". The "Backward branching" dropdown is set to "Previous slide (default)". At the bottom of the dialog, there are "OK" and "Cancel" buttons.