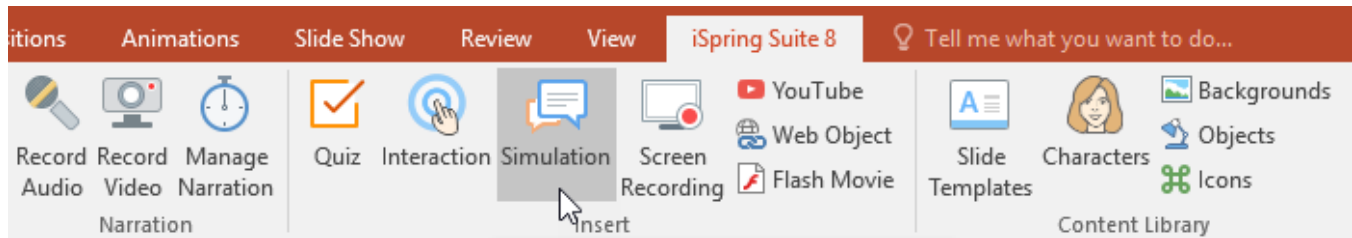


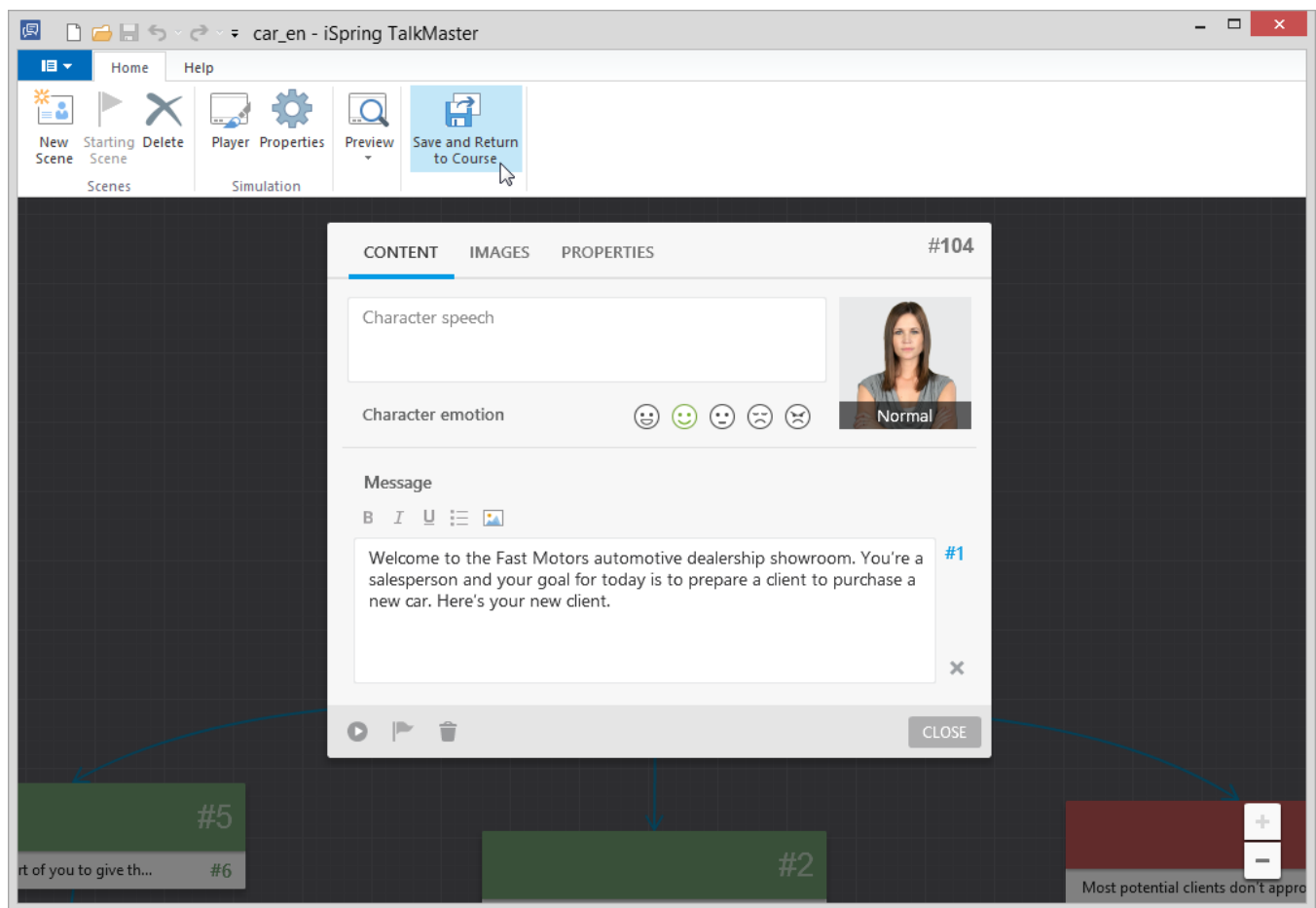
# Inserting Simulations

Building conversation scenarios is an essential part of the e-Learning universe, especially for corporate training. Many businesses require employees to be comfortable having professional conversations with clients and/or colleagues, and simulating common scenarios is an excellent way to practice safely without any real-life consequences to the business.

You can use the **Simulation** button on the toolbar to create a new simulation in the integrated iSpring TalkMaster tool.



After you make all necessary changes to the created simulation, click **Save and Return to Course** on the TalkMaster toolbar. Your simulation will be placed on the selected slide of your presentation.



Read [iSpring TalkMaster Guide](#) to learn how to create conversation simulations.