

# Learning Course Settings

The **Learning Course** tab allows you to select your course type, set information about the presentation - customize settings for your training course and choose how to report the completion status to an LMS.

The screenshot shows the 'Publish Presentation' window of iSpring Converter Pro. The 'Learning Course' tab is active, displaying the following settings:

- Course Information:**
  - Type: SCORM 1.2
  - Title: Getting Started with iSpring Converter Pro
  - Lesson title: Getting Started with iSpring Converter Pro
  - Description: (empty text area)
  - Keywords: (empty text area)
- Progress and Completion:**
  - Report status to LMS as: Complete/Incomplete
  - Lesson duration: 01:00:00
  - Rate slides: 1 of 12
  - Terminate lesson: No
  - Max score: 100
  - Show message: No
  - Passing score: 8.33
  - Customize... button

The left sidebar shows various output options: WEB, CD, iSpring Cloud, iSpring Learn, LMS (selected), and Video. At the bottom, there are buttons for 'Import/Export', 'Publish', and 'Cancel'.

Table 1. Course Information

Option	Description
Type	Select a type of standard for your training course: SCORM 1.2, 2004, AICC, Blackboard 9.x and Experience API. You can learn more about <a href="#">SCORM versions</a> , <a href="#">AICC</a> and <a href="#">Experience API</a> features and differences between them on Wikipedia.
Title	Put your training course name here.
Lesson title	Put in your lesson name.
Description	Type in a brief description of your training course here.
Keywords	Specify keywords for your LMS. They will help people find your training course by these keywords.
Tags	Tags are a powerful and useful tool to arrange content by themes. Add tags separated with commas.
Author	Specify the author of the presentation. If the field remains empty, the owner of the iSpring Learn account will be set as the author by default.

<b>xAPI end point</b>	Specify the address of the Learning Record Store (LRS) that stores learning records.
-----------------------	--

Click the **Customize** button to configure the Progress and Completion settings.

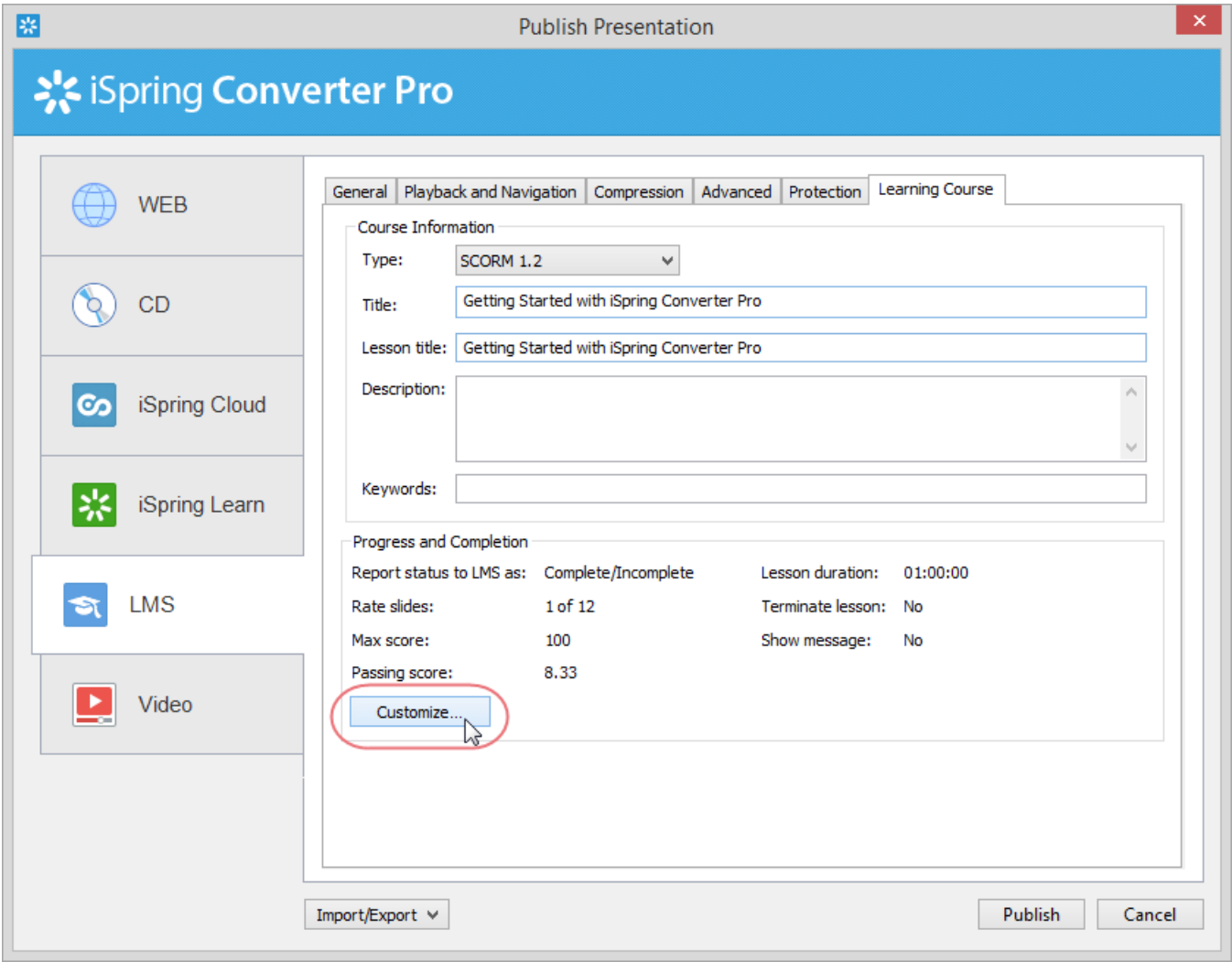


Table 2. Progress and Completion

Option	Description
<b>Report status to LMS as</b>	Choose the completion status, that will be sent to your LMS on successful/unsuccessful completion.
<b>Rate slides</b>	Set a minimum number of slides a learner must view to complete the lesson.
<b>Max score</b>	Specify the maximum score that can be awarded for your lesson.
<b>Passing score</b>	The program calculates the passing score for your course automatically, but you can select this checkbox and change the score a student needs to pass your lesson.
<b>Lesson duration</b>	The time given for the lesson. It is implied that students would learn the lesson well during the specified period of time.
<b>Timeout actions</b>	When the time given to the lesson is out, you can choose the following actions: terminate a lesson and/or show a message that the time has run out.

## Experience API Endpoint (Tin Can)

Experience API content can be hosted and launched outside of the LMS. To track the course statistics:

- Specify the LRS address in the xAPI endpoint field.
- Click **Options** to define additional parameters.

The screenshot shows the 'Learning Course' tab with the following details:

- Course Information:**
  - Type: Experience API
  - Title: iSpring Overview
  - Identifier: 57C0A4FB-E618-42BB-BFD6-C8792CB50DFC
  - Description: (empty text area)
- xAPI endpoint:** http://mylrs.com (highlighted with a red rectangle)
- Options...** button

The 'xAPI endpoint options' dialog box contains the following information:

- Security:**
  - Basic Authentication
  - Login: lrslogin
  - Password: (masked)
- Learner information:**
  - Name: Respondent
  - Email: respondent@test.com
- Buttons:** OK, Cancel

Table 3. xAPI endpoint options

Option	Description
<b>Login/Password</b>	Enter access credentials to the LRS.
<b>Name/Email</b>	Specify the sender's details that will be used for sending statistics

Partial information may also be filled into the xAPI endpoint options dialog. In this case, user will be prompted to enter the necessary information.

## CMi5 (Experimental)

CMi5 is a set of rules providing all the capabilities of SCORM and xAPI at the same time. Students can take course materials when there's no Internet connection with special mobile apps. The progress will be saved and sent to the LMS once the connection is restored.

In the **Launch method** field, choose if your course should open in a new browser window (**Own window**) or according to the LMS settings that apply to all courses in it (**Any window**).

