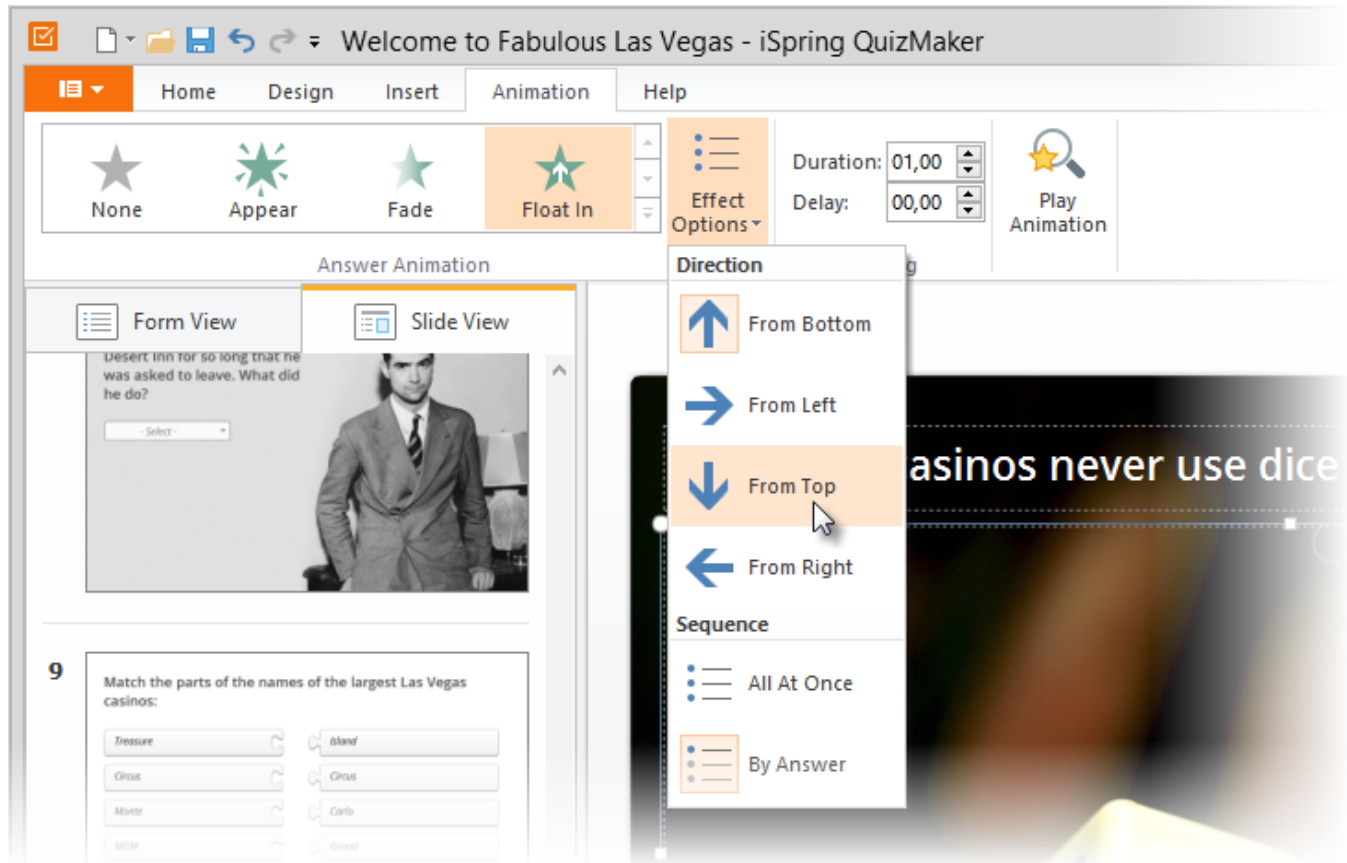


Effect Options

The effect options vary depending on which animation effect you have chosen. For most animations, you can modify the sequence. For the **Float In** animation effect you can define both the direction and sequence options.



To change an effect option:

- Choose an option in the **Effect Options** menu.

Table 1. Effect Options

Effect Option	Description
Direction	Specify the direction the animated object will move in. You can choose from the following directions: from bottom, from top, from right, from left.
Sequence	Choose whether the answer choices will appear on the screen all at once or one by one.

Effect options are not available if no animation effects have been applied to the answers.

[blocked URL](#)