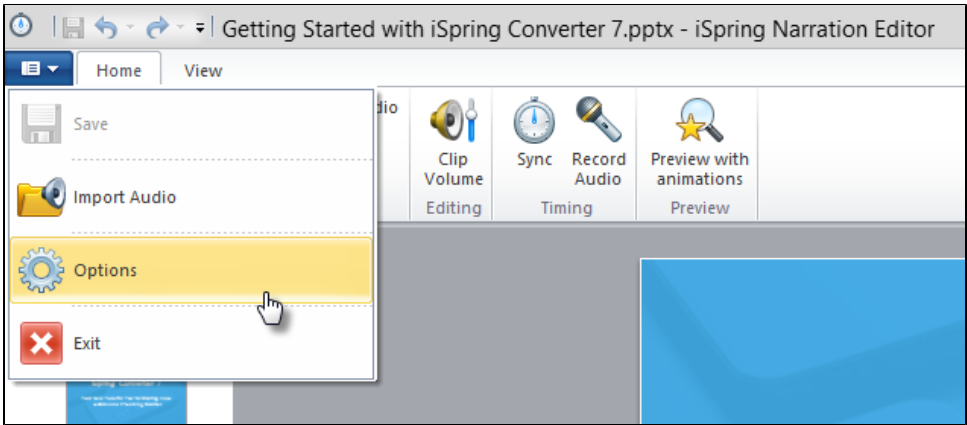


Narration Editor Options

As a rule, most computers are equipped with only one audio device. However, if you use several such devices, you can choose which one to use in iSpring Pro.

To open options of the narration editor:

- Click the **Options** button in the application menu.



In this window, you can select a device for audio recording.

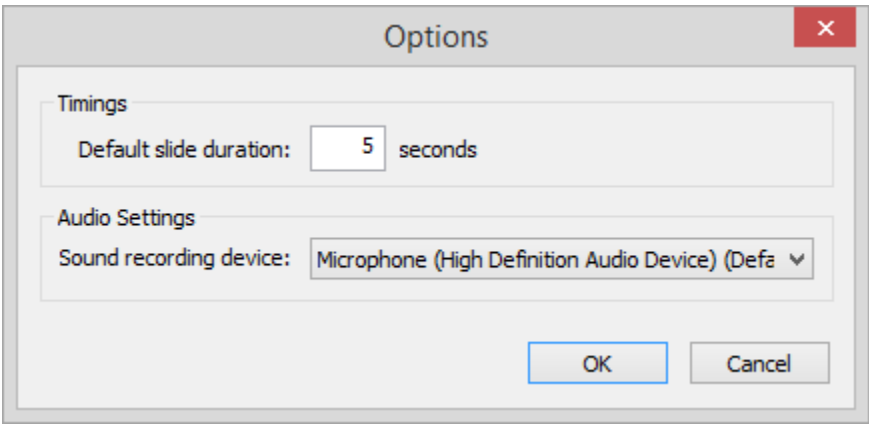


Table 1. Narration Editor Options

Option	Description
Default slide duration	Default slide duration will be applied to slides without animations, if you haven't specified their duration in Presentation Explorer .
Sound recording device	Use this drop-down menu to choose your microphone.

;