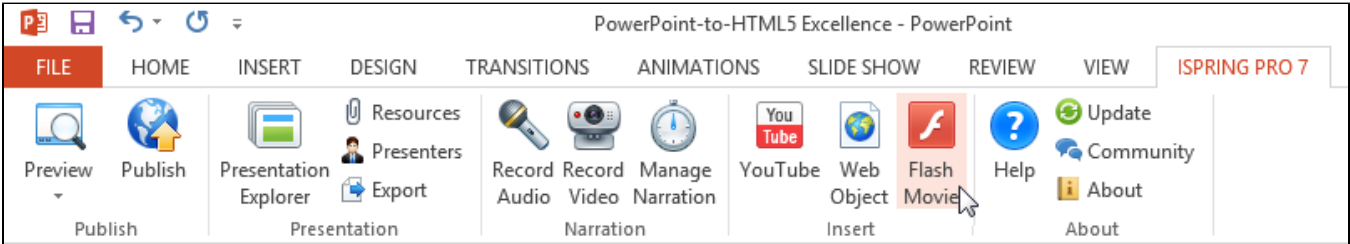


# Inserting Flash Movies

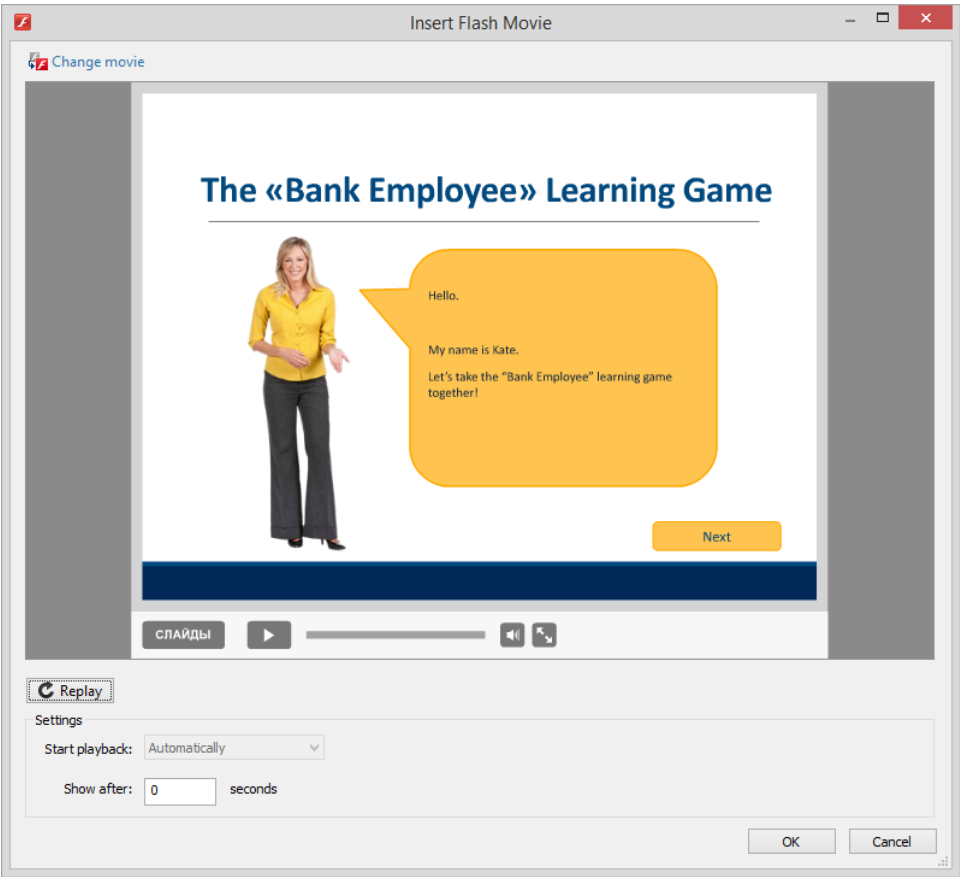
The **Insert Flash** feature allows you to easily insert external Flash movies into your PowerPoint slides.

You can import **.swf** or **.flv** files to the slide.



To insert a Flash movie, follow these steps:

1. Click the **Flash Movie** button on the iSpring toolbar.
2. Choose a Flash file to be inserted into the presentation and click **Open**.
3. Preview and edit the selected Flash file in the **Insert Flash Movie** window. For more details, see [Flash Movie Options](#) below.
4. Click **OK** to add your Flash Movie to the slide.



You will see the first frame of an **.swf** file or a static placeholder if you added an **.flv** file. The inserted Flash movie can be easily resized and moved within the slide.

Settings	Description
Change movie	This option allows you to navigate to your Flash file and replace the existing one.
Start playback	This options allows you to set the Flash Movie to play automatically or on a mouse click.
Show after	This option allows you to specify when your Flash Movie will appear on a slide. The default delay is 0 seconds, which means that a Flash Movie appears immediately.