

Timeline

Timeline is an iSpring Visuals interaction that can be used to visualize events that happened along a certain period of time.

- Adding a Period
- Adding an Event
- Duplicating a Period
- Duplicating an Event
- Deleting a Period or an Event
- Moving Periods and Events


The Presidents of the United States

<

>

George Washington

"I can only say that I have contributed towards the organization and administration of the Government the best exertions of which a very fallible judgment was capable."



1. George Washington (1732–1799)

Early Republic

Jacksonian Democracy

Sectional Conflict

Reconstruction Era

Gilded Age

A timeline is divided into periods. In fact, when you create a new timeline, it already appears with a blank period.

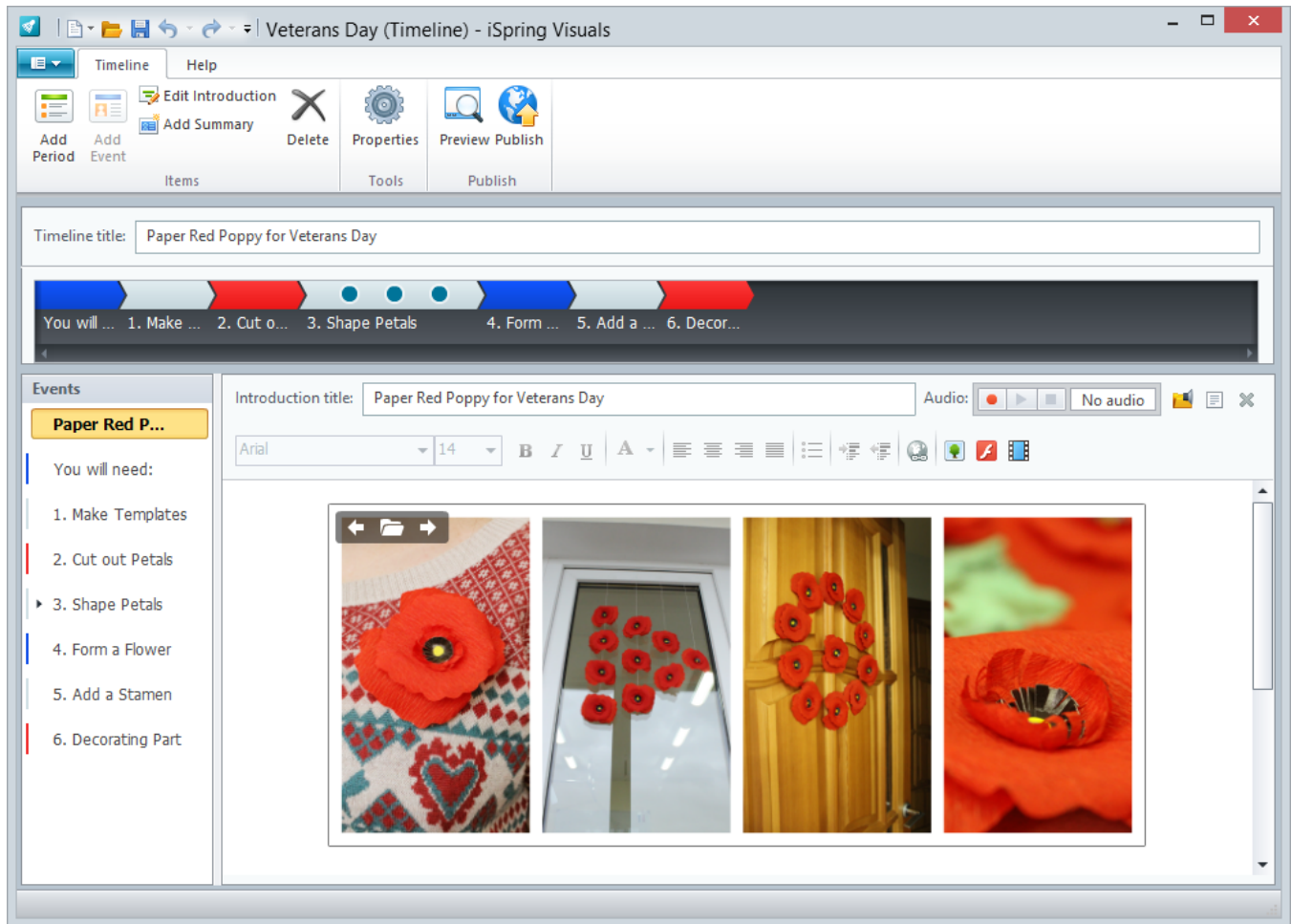
Each period may contain as many events as you want.

So here is the basic structure of a timeline (optional elements are shown in square brackets):

- [Introduction slide]

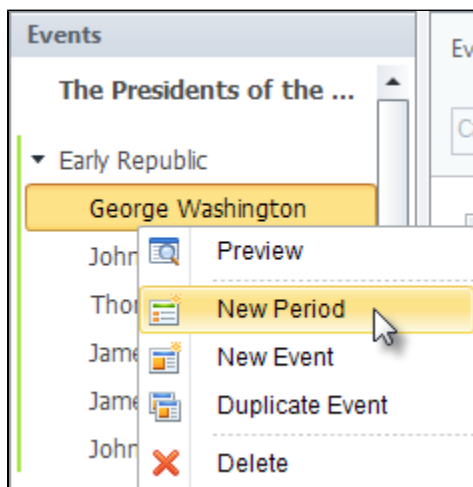
- Timeline
- Period 1
 - [Event 1]
 - [Event 2]
 - ...
 - [Event N]
- [Period 2]
- ...
- [Period N]
- [Summary slide]

When you create a timeline, it already contains one period. Now you can add more periods and events to it and provide a brief or detailed description to each element of the timeline.



Adding a Period

1. On the toolbar, click the **Add Period** button.
or
Right-click any place on the **Events** pane and choose **New Period** in the contextual menu.



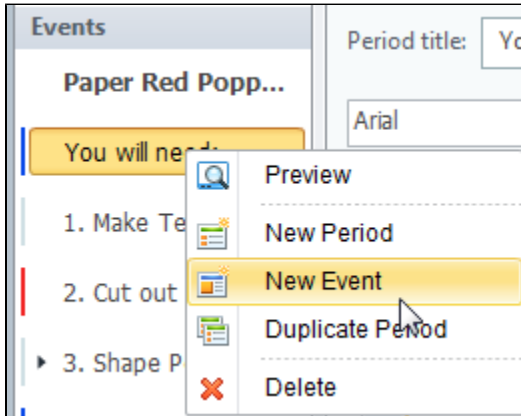
2. Type a period name in the **Period Title** field.
3. Select a color from the drop-down menu.
4. Provide a [description](#), [add images](#), [Flash movies](#), [videos](#) and/or [audio narration](#).

Adding an Event

1. On the timeline, select a period to which you want to add an event.
2. On the toolbar, click the **Add Event** button.

or

Right-click any place on the **Events** pane and choose **New Event** in the contextual menu.

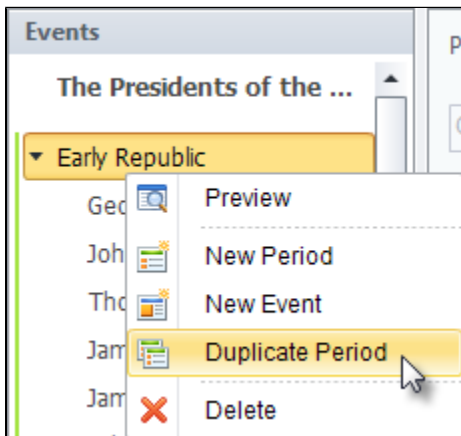


3. Type an event name in the **Event Title** field.
4. Adjust event's position on the timeline.
5. Provide a [description](#), [add pictures](#), [Flash movies](#), [videos](#) and/or [audio narration](#).

You can adjust the position of each period and event by dragging and dropping it in the desired location within the Timeline.

Duplicating a Period

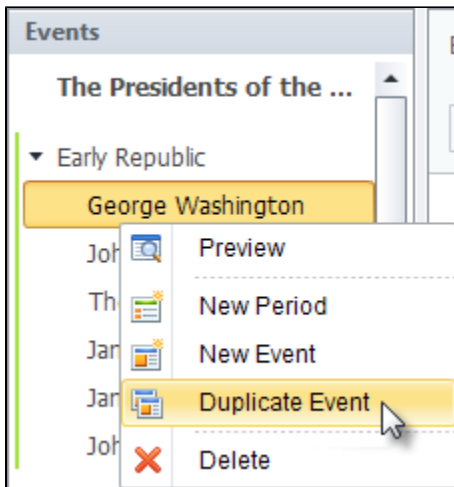
1. Select a period on the **Events** pane.
2. Right-click the selected period on the **Events** pane and choose **Duplicate Period** in the contextual menu.



The selected period will be duplicated along with the texts, images, audio, video and Flash files but without the added events.

Duplicating an Event

1. Select an event on the **Events** pane.
2. Right-click the selected event on the **Events** pane and choose **Duplicate Event** in the contextual menu.



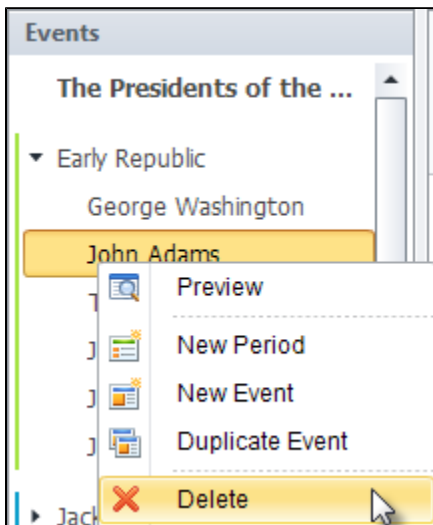
The selected event will be duplicated along with the added texts, images, audio, video and Flash files. Introduction and summary cannot be duplicated.

Deleting a Period or an Event

1. Select a period or an event, which you want to delete, on the **Events** pane.
To select several items, click them while holding down the **Shift** or **Ctrl** button.
2. Click the **Delete** button on the toolbar or press the **Delete** key on your keyboard.

or

Right-click the selected periods and events on the **Events** pane and choose **Delete** in the contextual menu.



Moving Periods and Events

- Drag a period or an event to a desired location in the **Events** pane.

When your timeline is ready, enter its name and [proceed to publishing](#).