

Publishing Quizzes to iSpring Learn

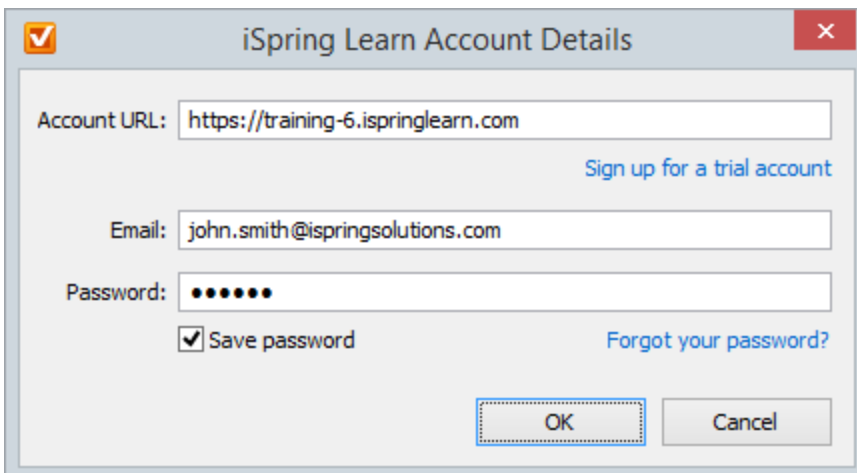
You can publish your quiz to iSpring Learn for public or private sharing of your content and tracking users' activities.



The "Publish Quiz" dialog box in iSpring QuizMaker. The left sidebar shows four options: Web, iSpring Learn (selected), LMS, and Word. The main area has tabs for General, Compression, Advanced, and Learning Course. The General tab is active, showing fields for Quiz title (US Country Study), Account (jonathan.smith@ispringsolutions.com), and Destination folder (Content List). There are buttons for "Change..." and "Select folder...". Below these are "Output" options: Desktop (Flash) with a sub-option "All in one Flash file", Mobile (HTML5), Combined (Flash + HTML5) (selected), Executable (EXE), Use iSpring Viewer, and Zip output. There is an "Upload source files" checkbox. On the right, a "Player" preview shows a welcome screen for "US Country Study" with an American flag and a "Start Quiz" button. At the bottom right are "Publish" and "Cancel" buttons.

To upload your quiz to iSpring Learn:

1. Click the **Change** button on the right of the **Account** field. You will see a window where you can enter your account details or sign up for a free trial.



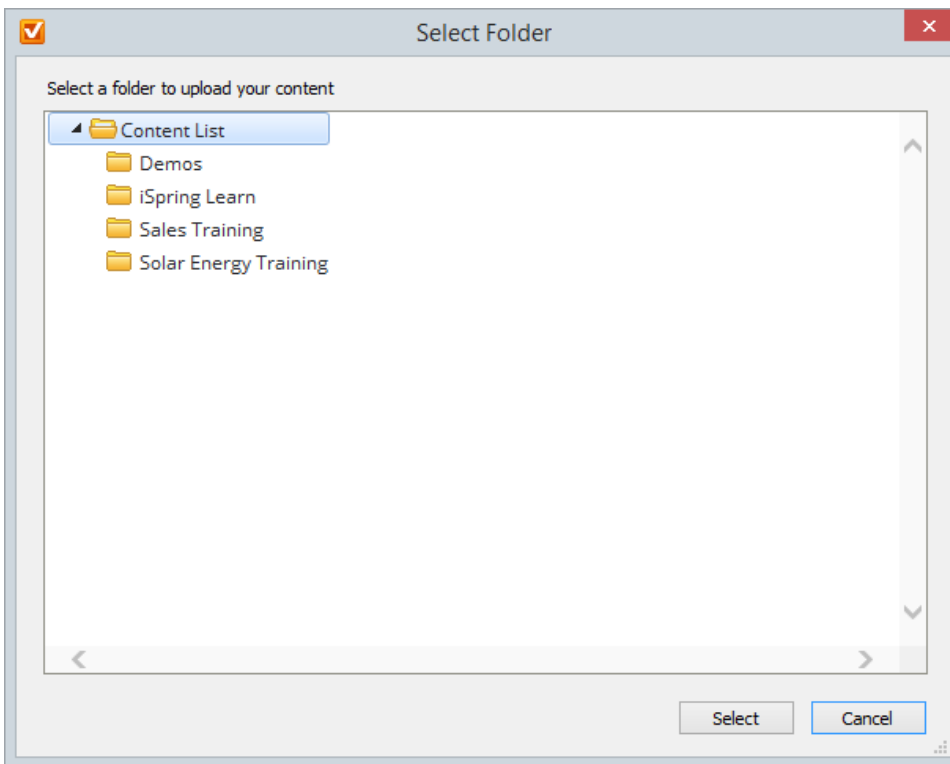
The "iSpring Learn Account Details" dialog box. It contains fields for Account URL (https://training-6.ispringlearn.com), Email (john.smith@ispringsolutions.com), and Password (masked with dots). There is a "Save password" checkbox (checked) and a "Forgot your password?" link. A "Sign up for a trial account" link is also present. At the bottom are "OK" and "Cancel" buttons.

2. When you enter your account details, iSpring validates this data, and you will see your name in the **Account** field.



A close-up of the Account field in the Publish Quiz dialog, showing the text "ispring_user@ispringsolutions.com (http://ispring_user.ispringsolutions.com)" and a "Change..." button.

3. Click **Select folder** on the right of the **Destination folder** field and select the folder to upload your content. By default, your quiz will be uploaded to the general content list.



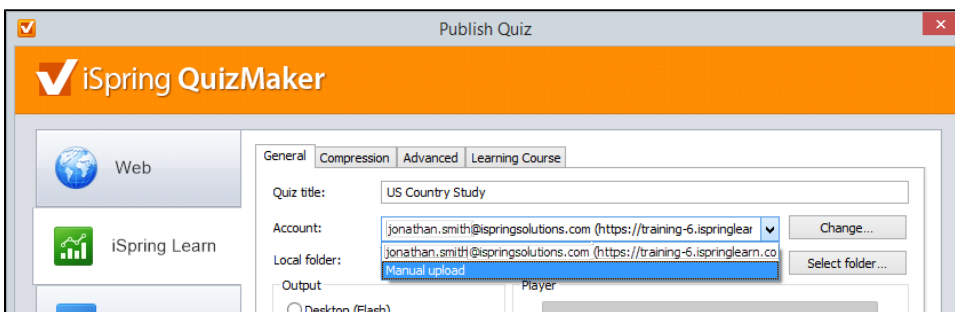
4. Check the box **Uploading source files** if you would like to upload source files to iSpring Learn.
5. Click the **Publish** button.

iSpring QuizMaker will convert your quiz to Flash and HTML5 and then upload it to your [iSpring Learn](#) account. This is a time consuming process and it may take a few minutes.

Manual Upload

If you don't have Internet connection or you use Proxy server to publish the quiz, you can upload the quiz to iSpring Learn manually:

1. Choose **Manual Upload** in the **Account** drop-down list.



2. In the **Local folder** field you can specify a local folder or network you'd like to save the quiz to.
 - a. Type in the path to the destination folder manually.
 - or
 - b. Click the **Browse** button on the right of the **Local folder** field, select the folder needed and click **OK**.
3. To publish your quiz, click the **Publish** button.
4. Once the quiz is published, the file with an *.isqmpkg extension will appear in the folder you have specified.
5. Sign in to your iSpring Learn account and upload this file via [iSpring Learn Web interface](#).