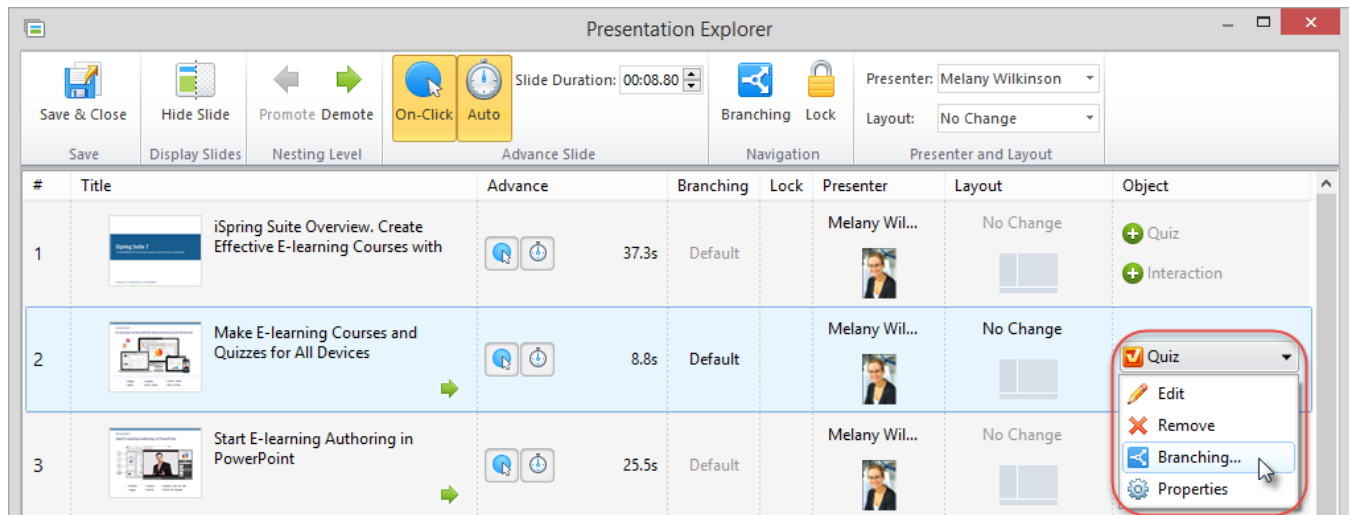
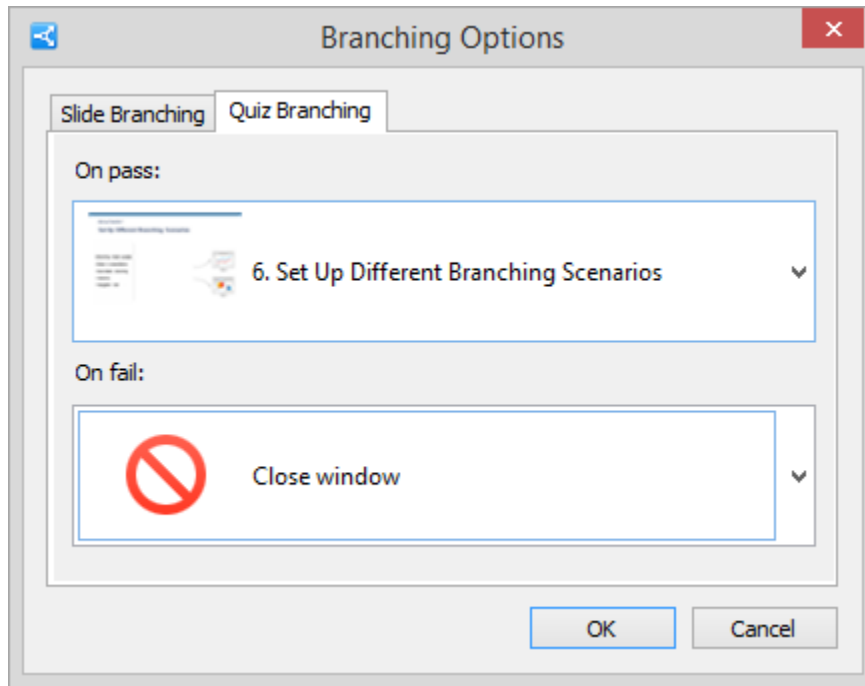


# Quiz-based Branching

By adding branching to your quizzes, you can send a learner to a particular slide depending on his/her quiz results. Select **Branching** in the menu or on the toolbar to open the **Branching Options** window.



In the **Branching Options** window select the **Quiz Branching** tab to specify actions for the successful and unsuccessful completion of the quiz. By default, a user will be taken to the next slide.



Quiz properties	
On pass	<p>This option defines what action will be performed on the click of the <b>Finish</b> button when the quiz is passed.</p> <p>The available actions:</p> <ul style="list-style-type: none"><li>• Go to the next slide</li><li>• Close the window</li><li>• Go to the slide with a specified number</li></ul>

<b>On fail</b>	<p>This option defines what action will be performed on the click of the <b>Finish</b> button when the quiz is failed. The available options:</p> <ul style="list-style-type: none"> <li>• Go to the next slide</li> <li>• Close the window</li> </ul> <p>Slide N (Go to the slide with a specified number)</p>
----------------	-----------------------------------------------------------------------------------------------------------------------------------------------------------------------------------------------------------------------------------------------------------------------------------------------------------------

Additionally, you can specify the forward and backward actions that will be performed if a user skips the quiz.

Switch to the **Slide Branching** tab and adjust the navigation buttons (Skip Quiz/Previous) to take the learner to:

- the Next Slide/Previous Slide
- any particular slide.

The screenshot shows a dialog box titled "Branching Options" with a close button (X) in the top right corner. Inside the dialog, there are two tabs: "Slide Branching" (selected) and "Quiz Branching". Under the "Slide Branching" tab, there are two sections: "Forward branching (On skip quiz):" and "Backward branching:". The "Forward branching" section contains a blue right-pointing arrow icon and a dropdown menu with the text "Next slide (default)". The "Backward branching" section contains a blue left-pointing arrow icon and a dropdown menu with the text "Previous slide (default)". At the bottom of the dialog, there are "OK" and "Cancel" buttons.