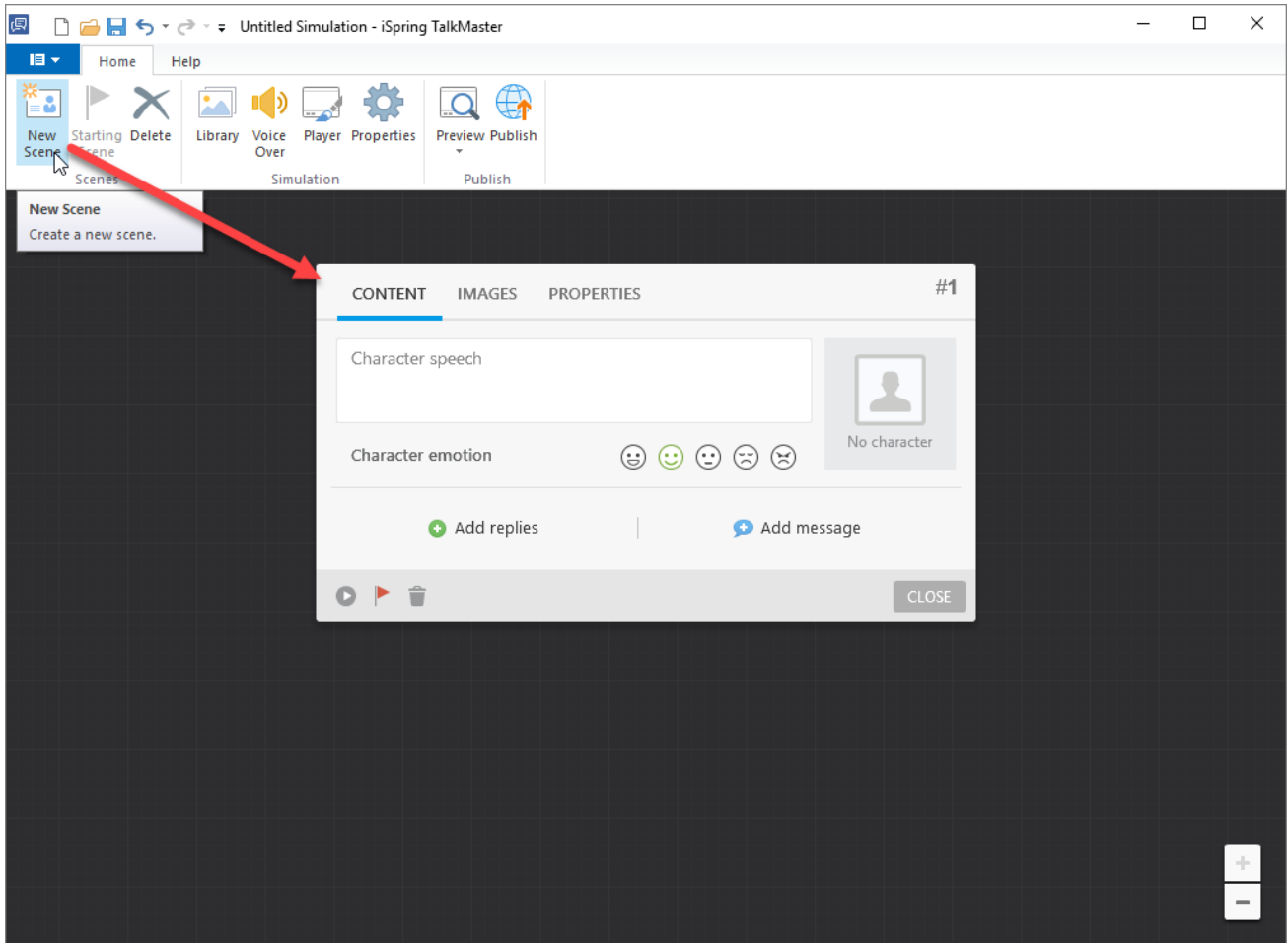


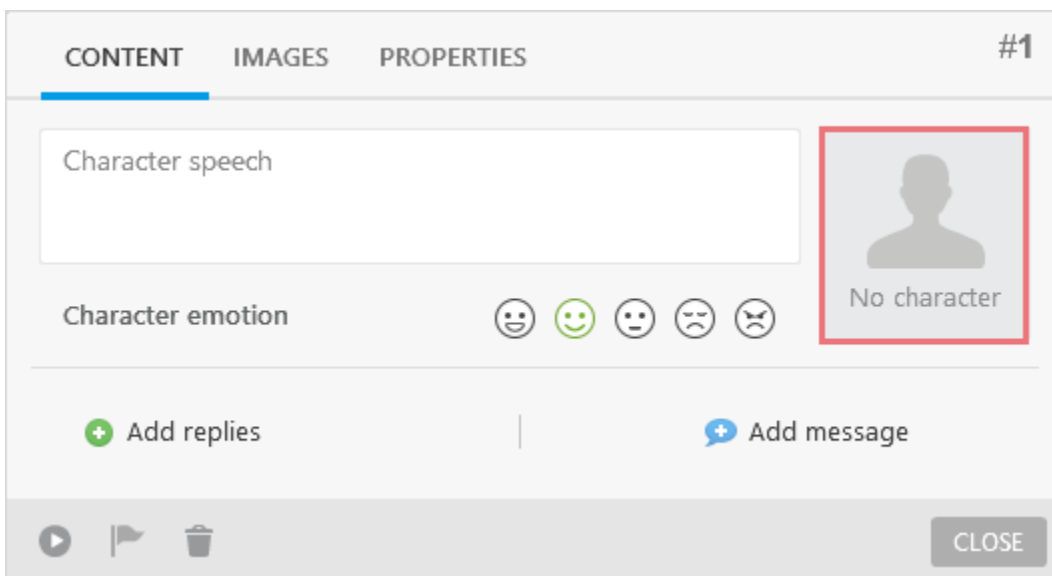
# Creating a New Scene

Once TalkMaster is open, you can start creating your first scenario.

1. Click **New Scene** on the toolbar to create the first scene.

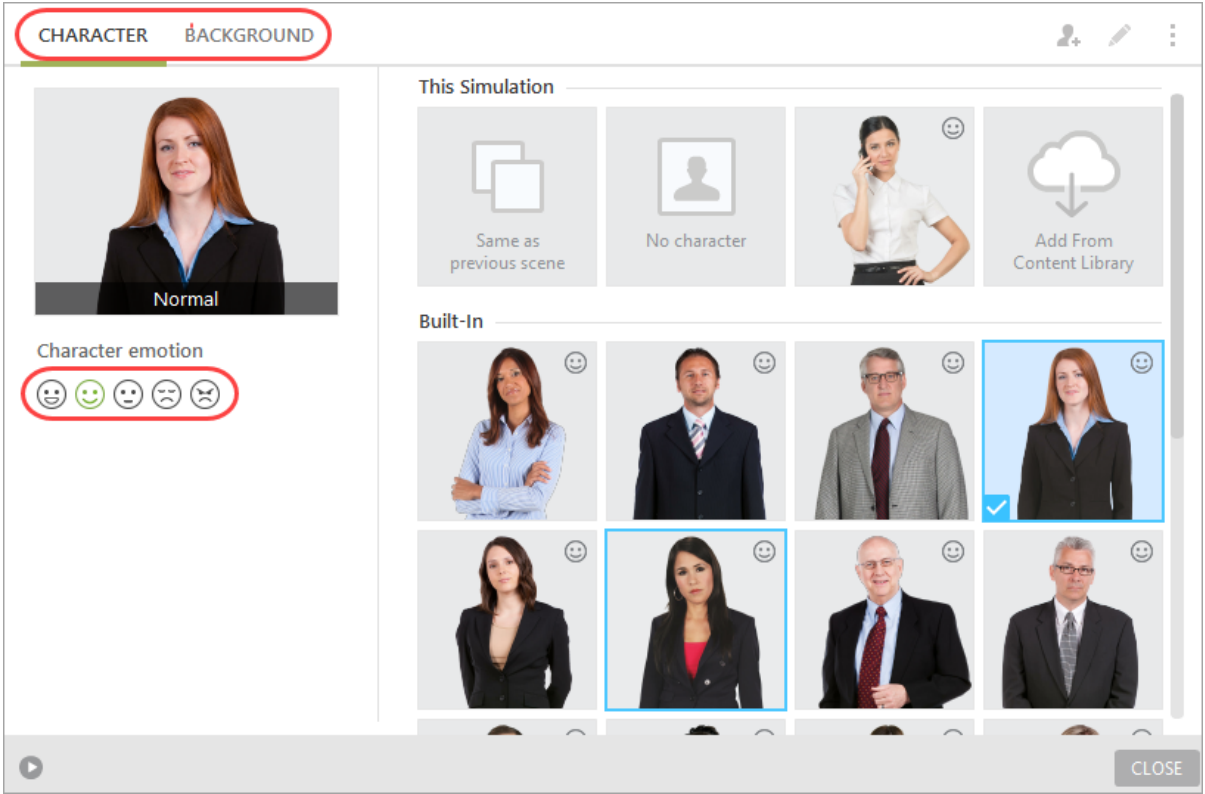


2. Then, click the box that says **"No character"** to add a character and background from the library.

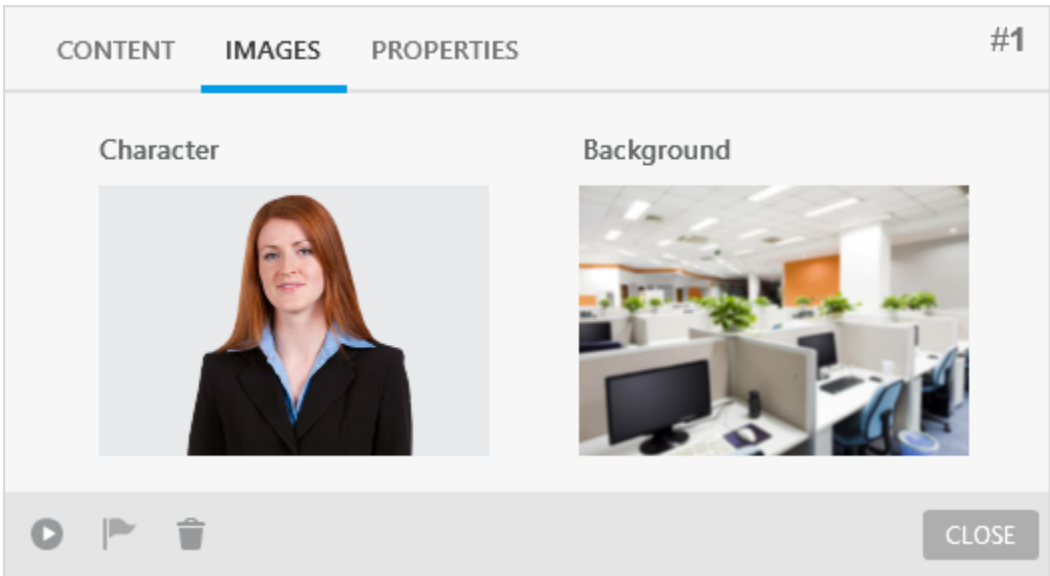


3. The character gallery will open up. Choose a character to appear in this scene, and then go to the **Background** tab to choose a background from the background gallery. When you're done picking your character and background, click **Close**.

You can also change your character emotion if you like. This not only makes a scene feel more natural, but can also encourage good choices and discourage bad ones.



4. Back in the scene simulation, your character and background images will be accessible from the **Images** tab if you'd like to change them later.



5. Back on the **Content** tab, enter some text for the character to say, and then click **Add replies** to give the user some choices as to how to respond to the character.

CONTENT IMAGES PROPERTIES #1

1 Can you tell me where I can find a book on astronomy?

Character emotion 😊 😄 😐 😞 😡 Normal

2 + Add replies | + Add message

🎬 🚩 🗑️ CLOSE

6. Add as many reply choices as you like; just click **Add reply** to add another one and then type in the text.

CONTENT IMAGES PROPERTIES #1

Can you tell me where I can find a book on astronomy?

Character emotion 😊 😄 😐 😞 😡 Normal

Reply options

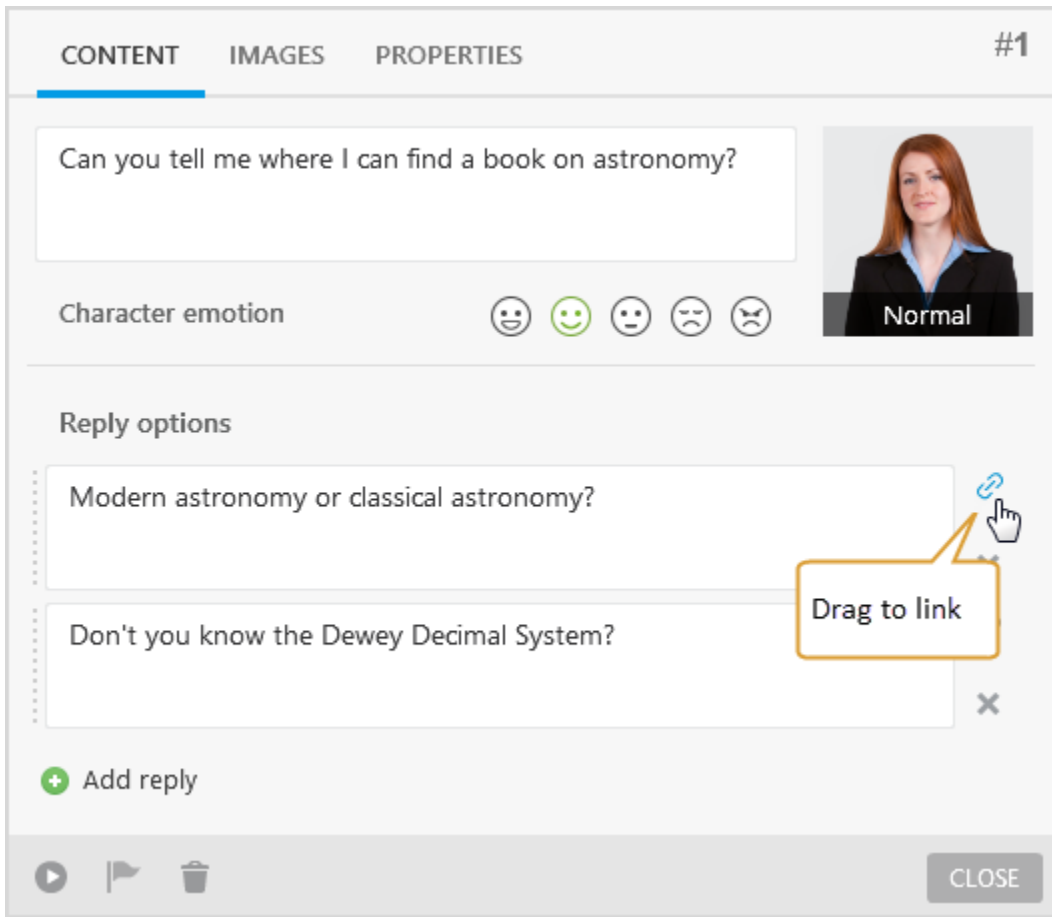
Modern astronomy or classical astronomy? 🔗 ✕

Don't you know the Dewey Decimal System? 🔗 ✕

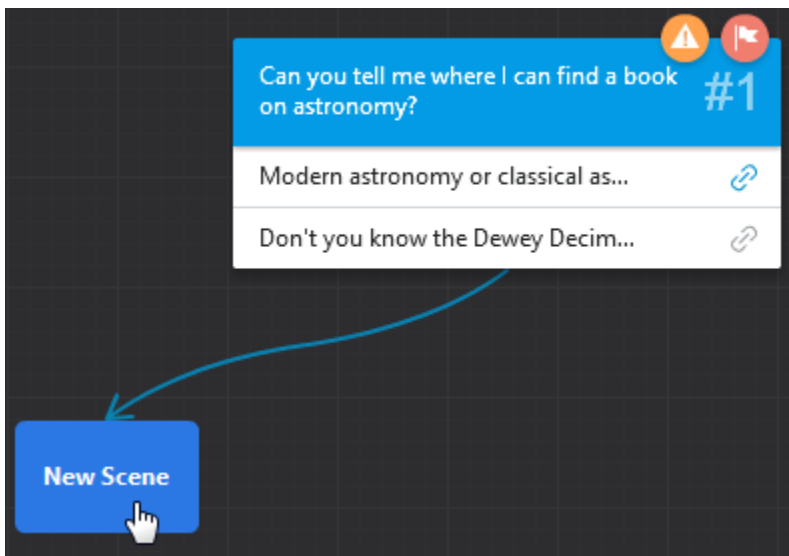
+ Add reply

🎬 🚩 🗑️ CLOSE

7. When you're done adding replies, you can start linking them. Click and drag the **link icon** off the scene simulation to create a new scene that's linked to that answer.

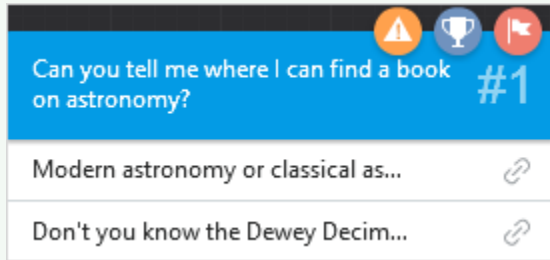


Drag your new scene wherever you like on the simulation map, then let go of the mouse button to create it. Afterwards, you can drag the link icon from the second reply and create a corresponding scene. Add text info similar to to the first scene. You do not need to select character and background for the second and further scenes since they will be taken over from the first scene.





**\*TIP** The colored circles at the top right corner of the scene give you information about it. The red flag indicates that scene is the first scene in the scenario. The yellow triangle means that one of the replies is not linked to any scene. The cup icon is added to the scored scenes.



**Related articles:**

- [Adding a Character](#)
- [Choosing a Relevant Background](#)
- [Creating a Custom Character](#)
- [Adding Custom Backgrounds](#)