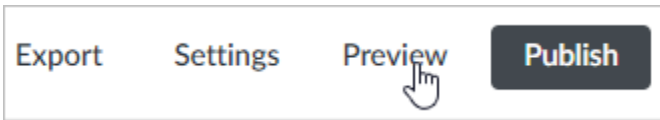
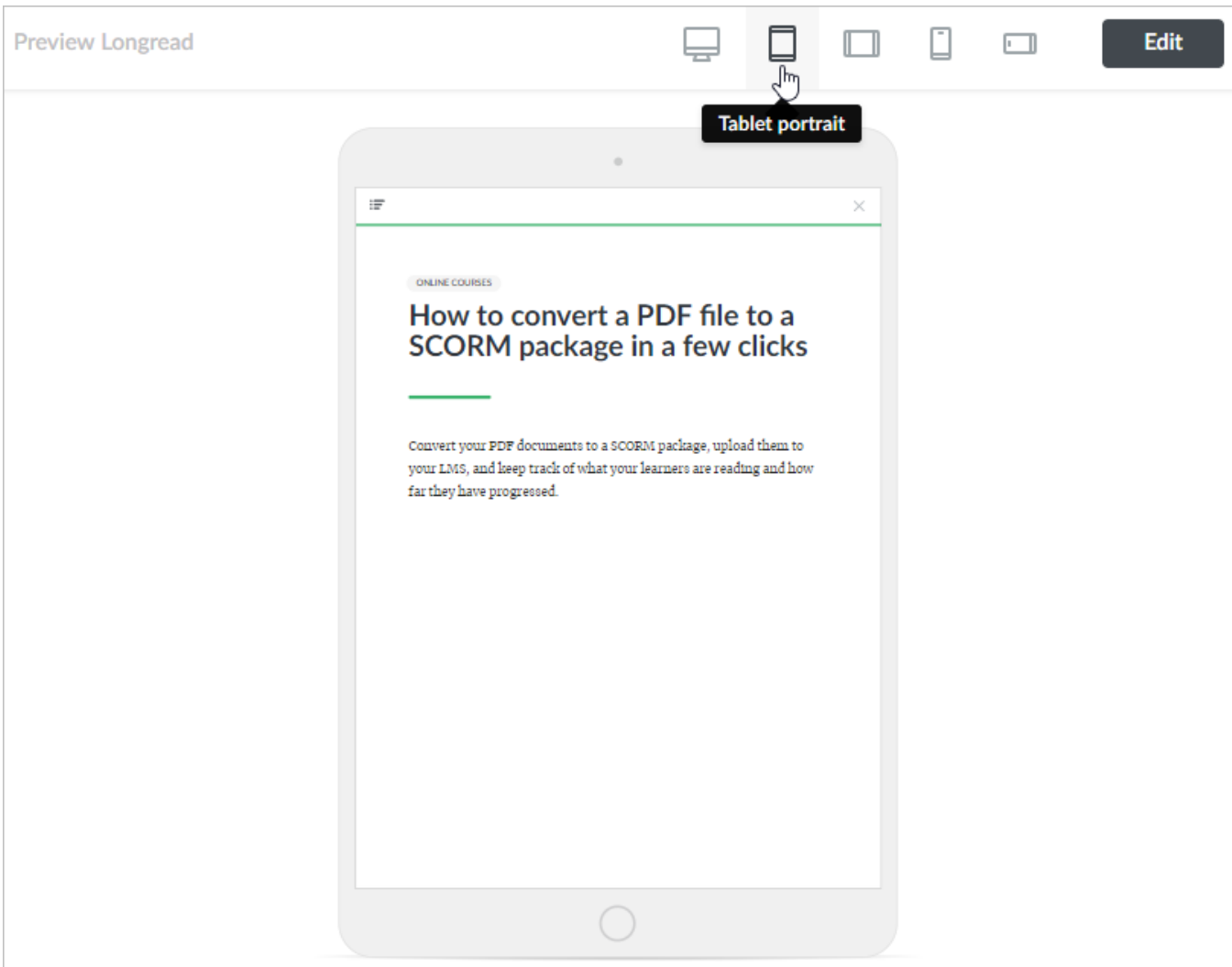


Previewing Longread

Before publishing a longread and assigning it to your students, you'd rather look at it from a user perspective. To do this, you need to click **Preview** at the top right corner of the page.



You will be switched to Preview mode and find out how users see the longread from a desktop computer, a smartphone, or a tablet.



At any moment, you can go back into Editing mode by clicking **Edit**.

