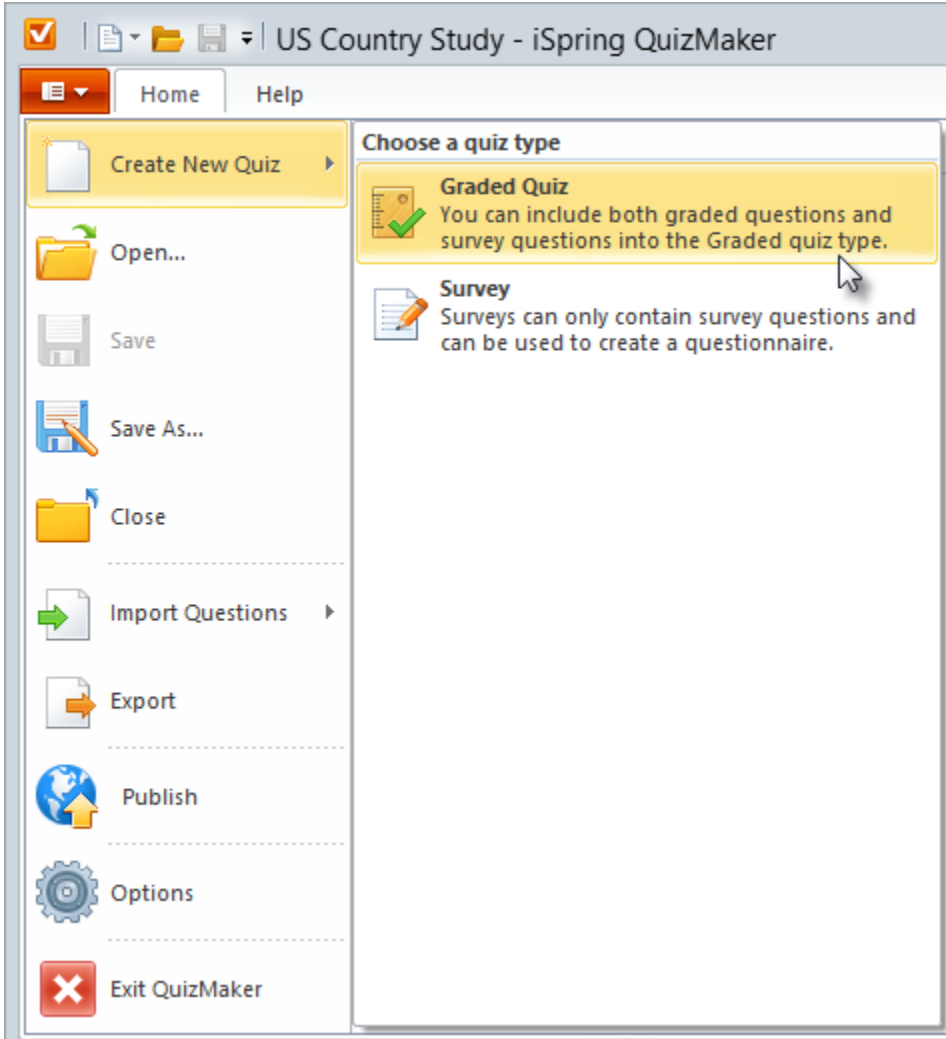


# Creating a New Quiz

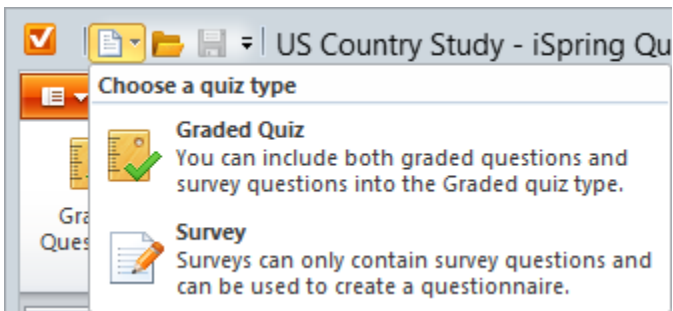
When you start iSpring QuizMaker, the Quick Start window will prompt you to choose the type of your new quiz. You can create either a new graded quiz or a survey. Additionally, you can use the Application menu or the Quick Access toolbar to create a new quiz.

1. Click the **QuizMaker** button in the upper left corner of the toolbar to open the **Application menu**.
2. Choose **Create New Quiz** in the Application menu.
3. Choose a quiz type: **Graded Quiz** or **Survey**.



or

1. Click the 'blank page' icon on the **Quick Access Toolbar**.
2. Choose a quiz type: **Graded Quiz** or **Survey**.



You can mix graded and survey questions in a quiz. If you would like to add a graded question into a survey, a survey will be transformed to a graded quiz.