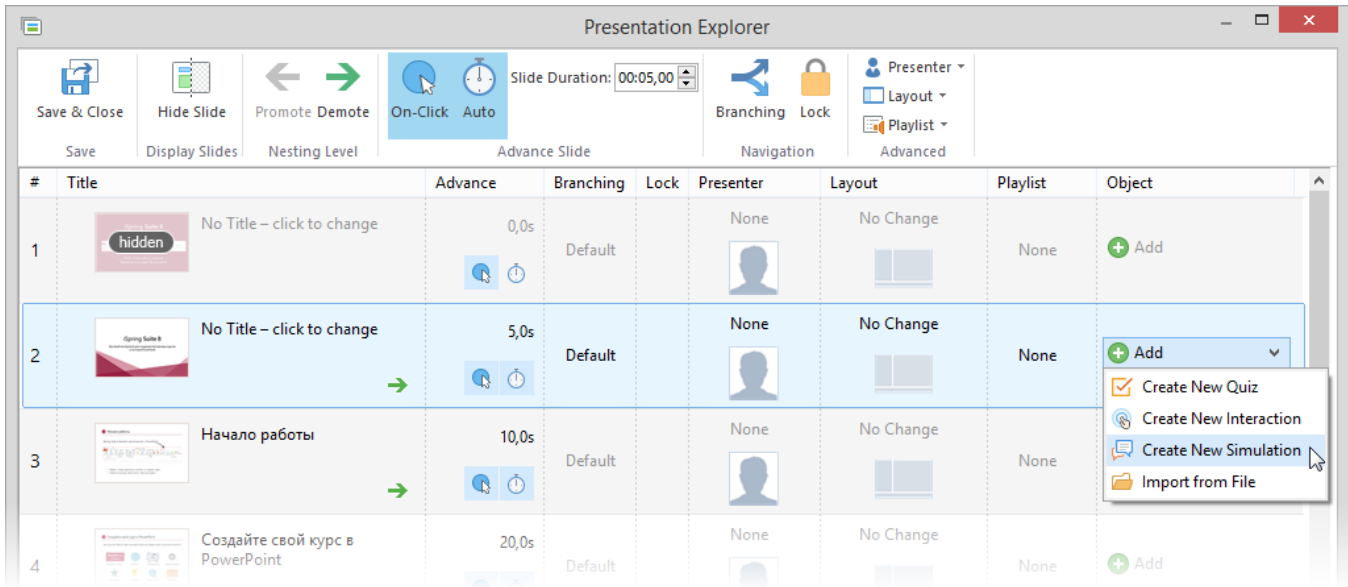


# Adding Simulations

iSpring's Presentation Explorer allows you to insert interactive simulations into PowerPoint slides using the **Object** column.

To add a simulation to a particular slide:

1. Click the **Add** button in the **Object** column
2. Select one of the options from the drop-down menu:
  - **Create New Simulation** - Select this option to create a new dialog simulation in the iSpring QuizMaker editor.
  - **Import from File** - This option allows you to select one of the existing simulations to insert into the slide.



Once you add your simulation to a course, you can open it for editing in iSpring TalkMaster, remove it from the slide, customize the [Simulation Branching Options](#), and set the [Simulation Properties](#).

Read [iSpring TalkMaster Guide](#) to learn how to create quizzes.