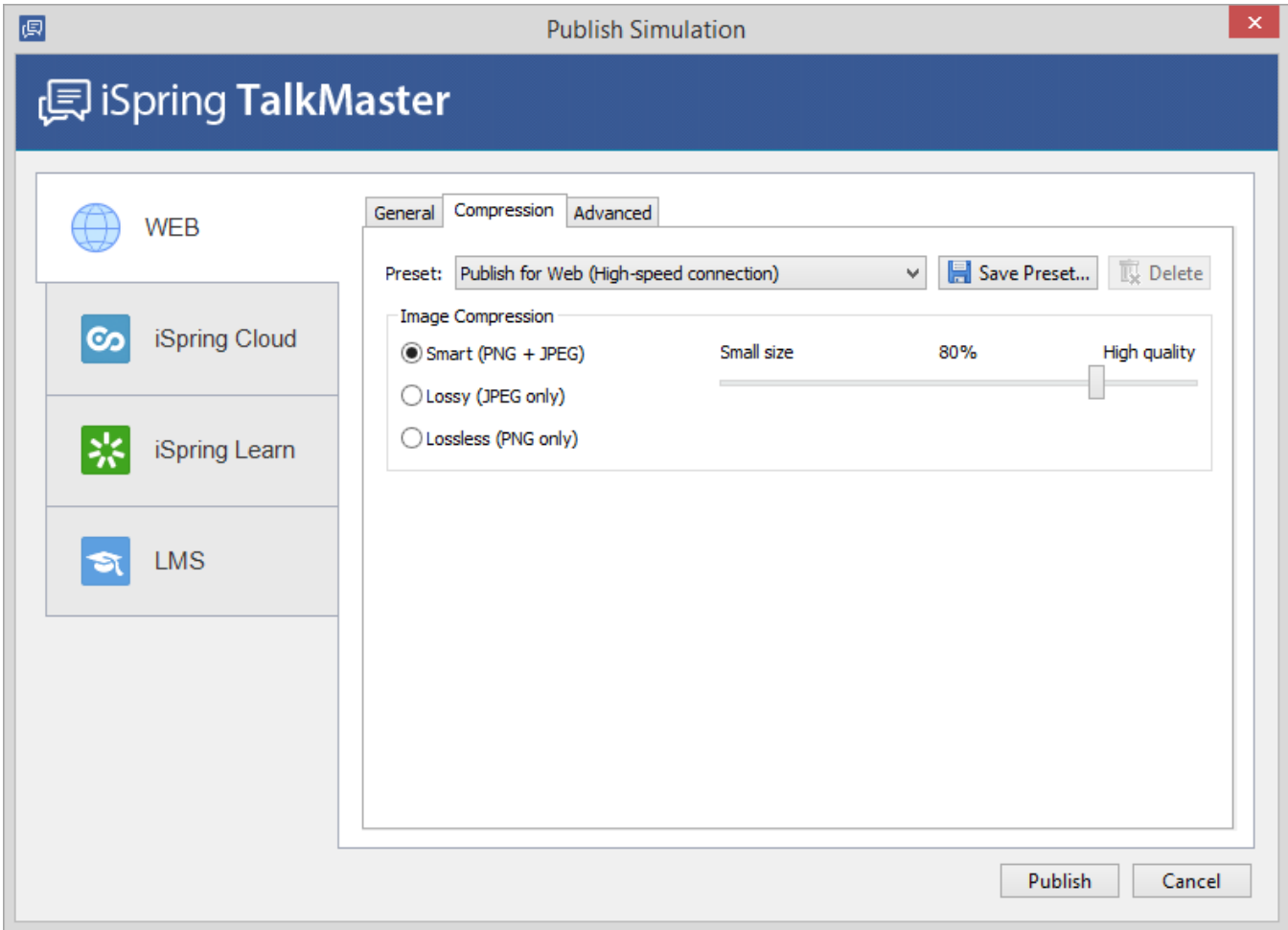


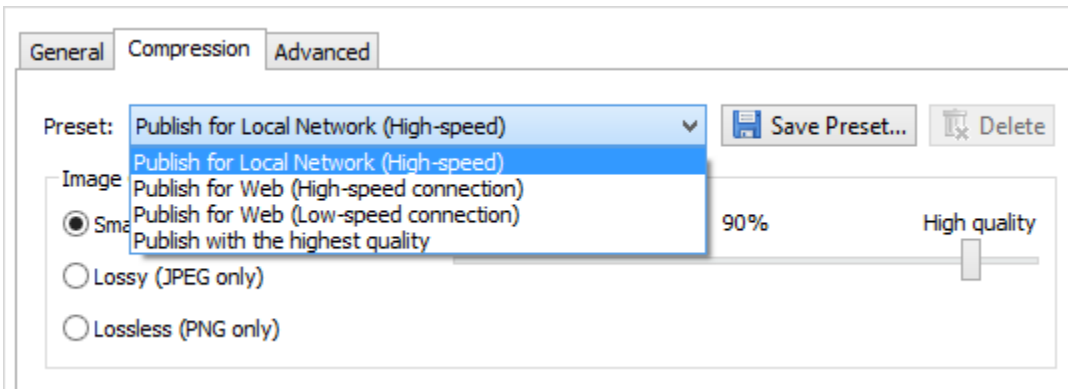
Compression

The Compression tab allows you to configure compression settings for your simulation.

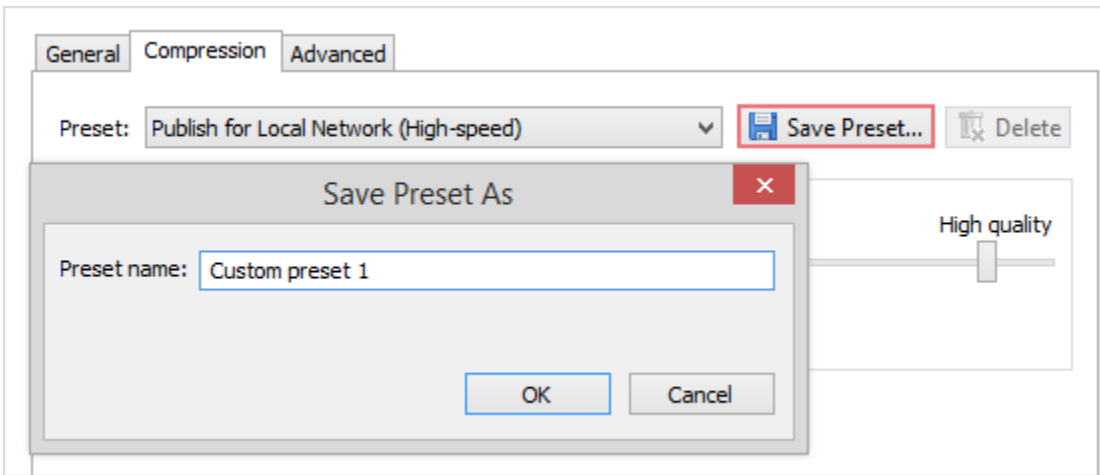


Preset

iSpring TalkMaster offers four preset compression modes that optimize a simulation for the web with low or high connection speed, publishing it to the Local Network drive. You can also create up to five custom compression presets to suit your needs.



You can save a custom preset by clicking the **Save Preset** button.



To delete a custom preset, select it in the list of presets and click **Delete**.

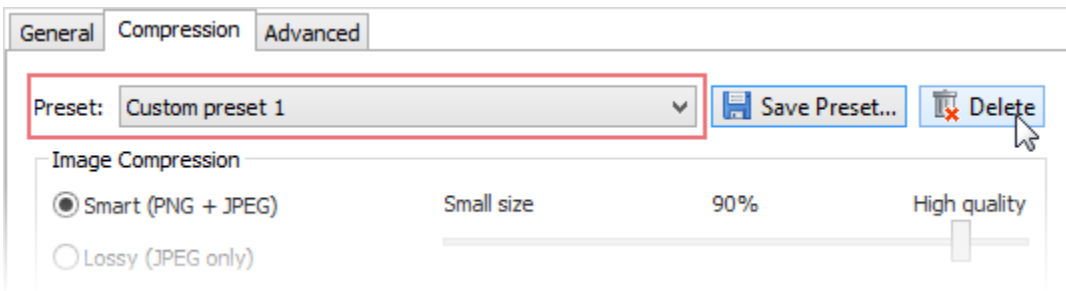
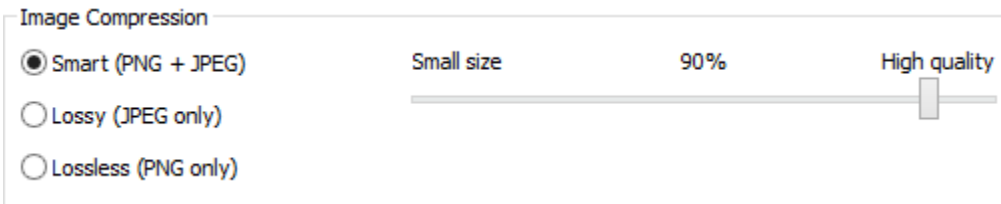


Image Compression

You can select one of the available compression options for your images. The lower the quality of images, the smaller the size of the resulting file.



If you choose **Smart** mode, all images will be saved, keeping their high quality and small size. Read more about **Smart** compression in the [iSpring blog](#). **Lossy** compression will convert and save all embedded images to .jpg format. **Lossless** compression converts all images in your presentation with the highest quality