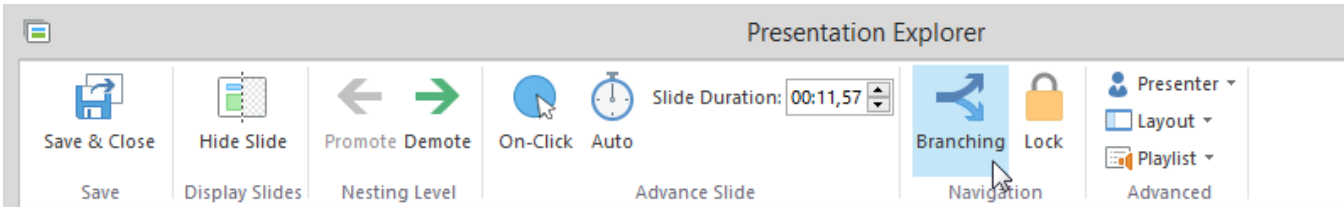


Managing Slide Branching Options

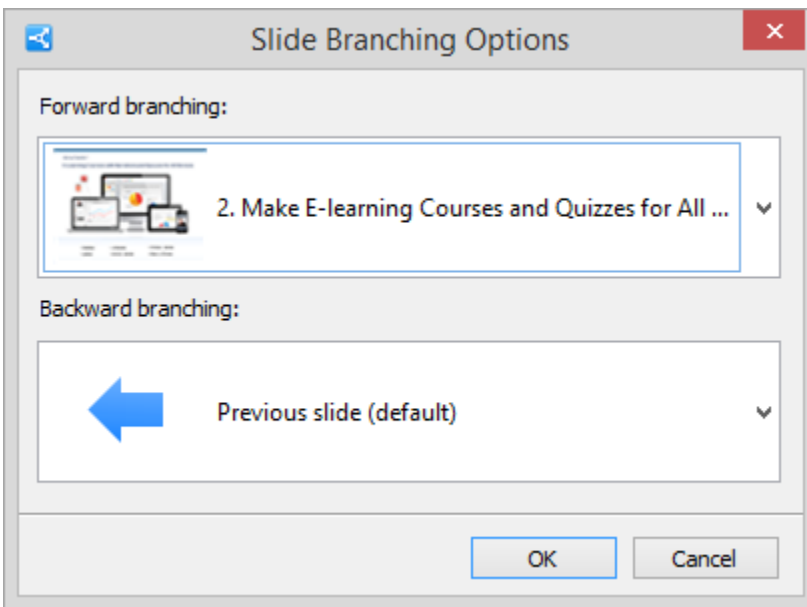
With the Branching option, you can create effective scenarios of your presentation. It allows you to set up branching for user's forward and backward actions.

To access the branching options, click the **Branching** button on the toolbar.

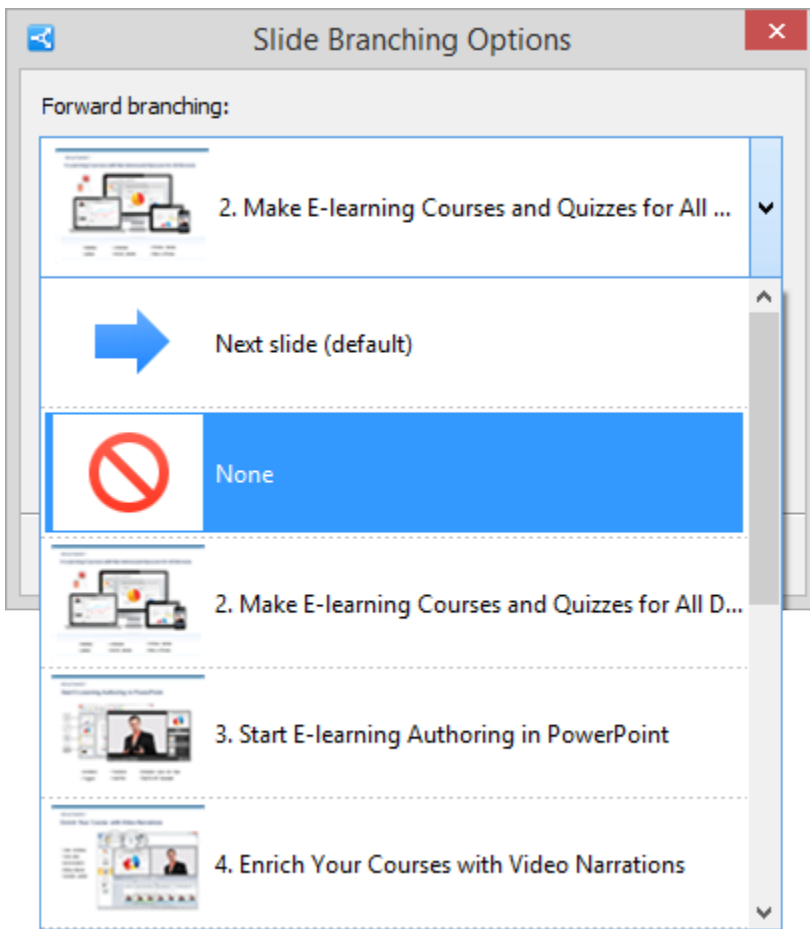


You can adjust each slide's navigation buttons (Next/Previous) to take the learner to:

- The Next Slide/Previous Slide
- Any particular slide



By selecting **None**, you can block the navigation. In this case users won't be able to move forward or backward from the slide.



Note: The forward branching will also work if a user moves forward by clicking on the slide.

The configured branching preferences will be displayed in the **Branching** column. The following branching settings will be used by default: next slide for forward branching and previous slide for backward branching.

#	Title	Advance	Branching	Lock	Presenter	Layout	Playlist	Object
1	iSpring Converter Pro	4,0s 	Default		None 	Full 		Add
2	iSpring Converter Pro	11,5s →	→ Slide 4 ← None		Monique ... 	Full 		Add
3	Getting Started	10,0s ←	Default		Monique ... 	No Sidebar 		Add
4	Create Your Course in PowerPoint	20,0s ←	Default		Monique ... 	Full 		Add