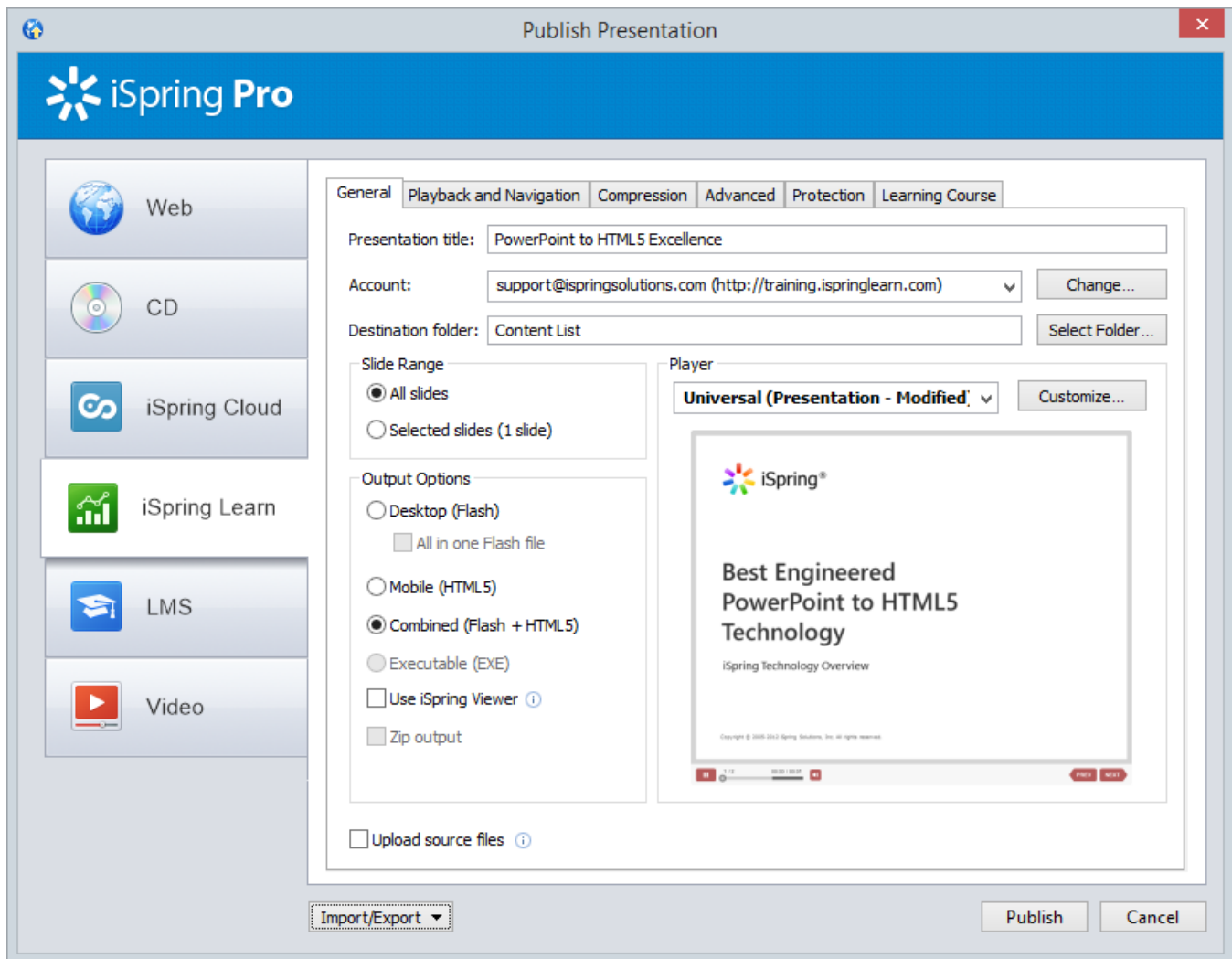


# Publishing to iSpring Learn

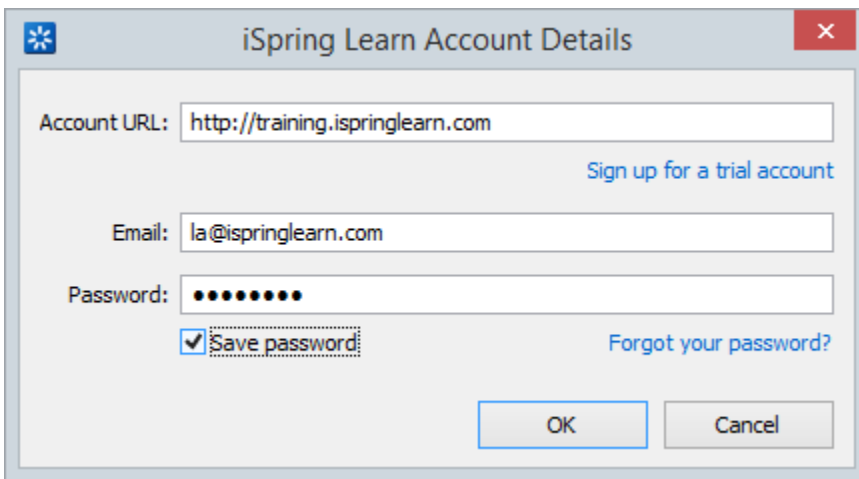
You can publish your presentation to iSpring Learn for public or private sharing of your content and tracking users' activities.

- [Publish to iSpring Learn](#)
- [Manual Upload](#)



To upload your presentation to iSpring Learn:

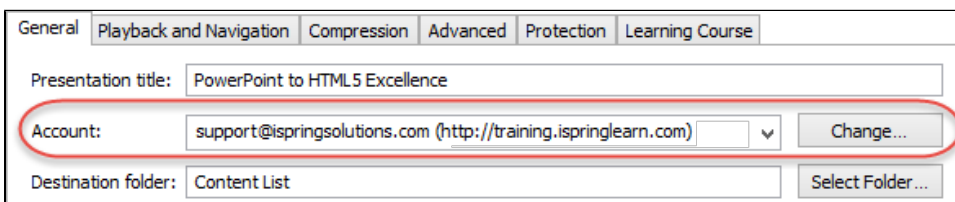
1. Click the **Change** button on the right of the **Account** field. You will see a window where you can enter your account details or sign up for a free trial.



The dialog box is titled "iSpring Learn Account Details". It contains the following fields and options:

- Account URL:  [Sign up for a trial account](#)
- Email:
- Password:  [Forgot your password?](#)
- Save password
- Buttons: OK, Cancel

2. When you enter your account details, iSpring validates this data, and you will see your name in the **Account** field.

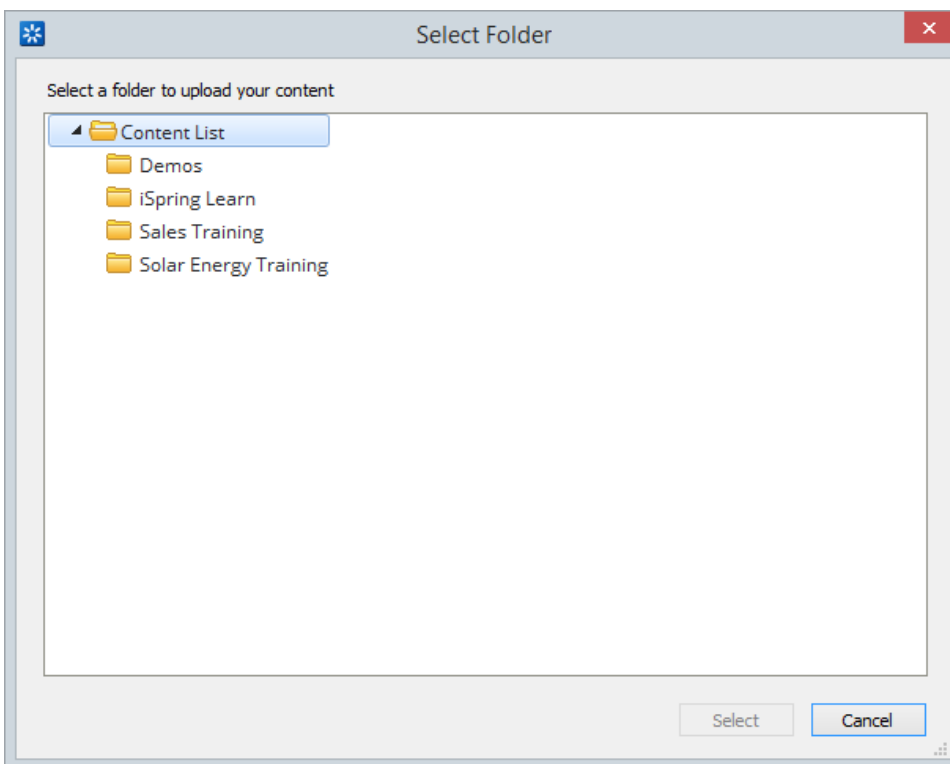


The dialog box shows the "Learning Course" tab. The "Account" field is highlighted with a red oval and contains the text: support@ispringsolutions.com (http://training.ispringlearn.com) with a dropdown arrow and a "Change..." button.

Other fields include:

- General | Playback and Navigation | Compression | Advanced | Protection | Learning Course
- Presentation title:
- Destination folder:  [Select Folder...](#)

3. Click **Select folder** on the right of the **Destination folder** field and select a folder to upload your content. By default, your presentation will be uploaded to the general content list.



The "Select Folder" dialog box shows a tree view of folders:

- Content List (selected)
- Demos
- iSpring Learn
- Sales Training
- Solar Energy Training

Buttons: Select, Cancel

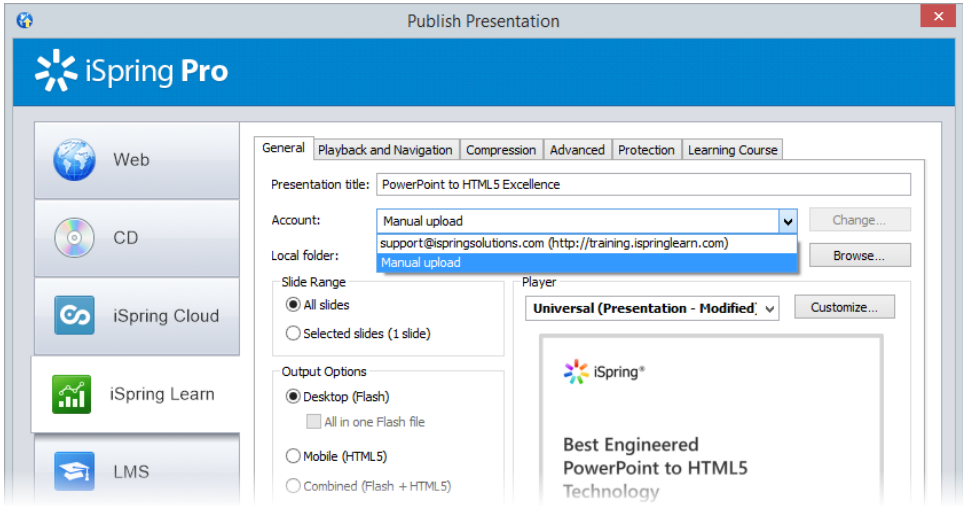
4. Check the box **Uploading source files** if you would like to upload the source files to iSpring Learn.
5. Click the **Publish** button.

iSpring Pro will convert your presentation to Flash and HTML5 and then upload it to your [iSpring Learn](#) account. This is a time consuming process and it may take a few minutes.

# Manual Upload

If you don't have Internet connection or you use Proxy server to publish the presentation, you can upload the presentation to iSpring Learn manually:

1. Choose **Manual Upload** in the **Account** drop-down list.



2. In the **Local folder** field you can specify a local folder or network you'd like to save the presentation to.
  - a. Type in the path to the destination folder manually.
  - or
  - b. Click the **Browse** button on the right of the **Local folder** field, select the folder needed and click **OK**.
3. To publish your presentation, click the **Publish** button.
4. Once the presentation is published, the file with an \*.ismpkg extension will appear in the folder you have specified.
5. Upload this file via [iSpring Learn Web interface](#).