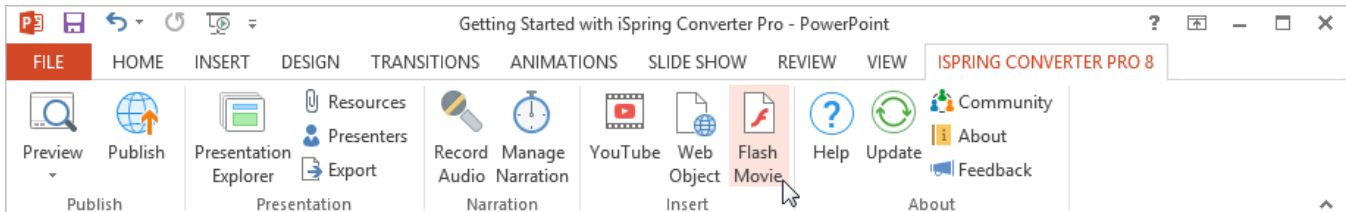


# Inserting Flash Movies

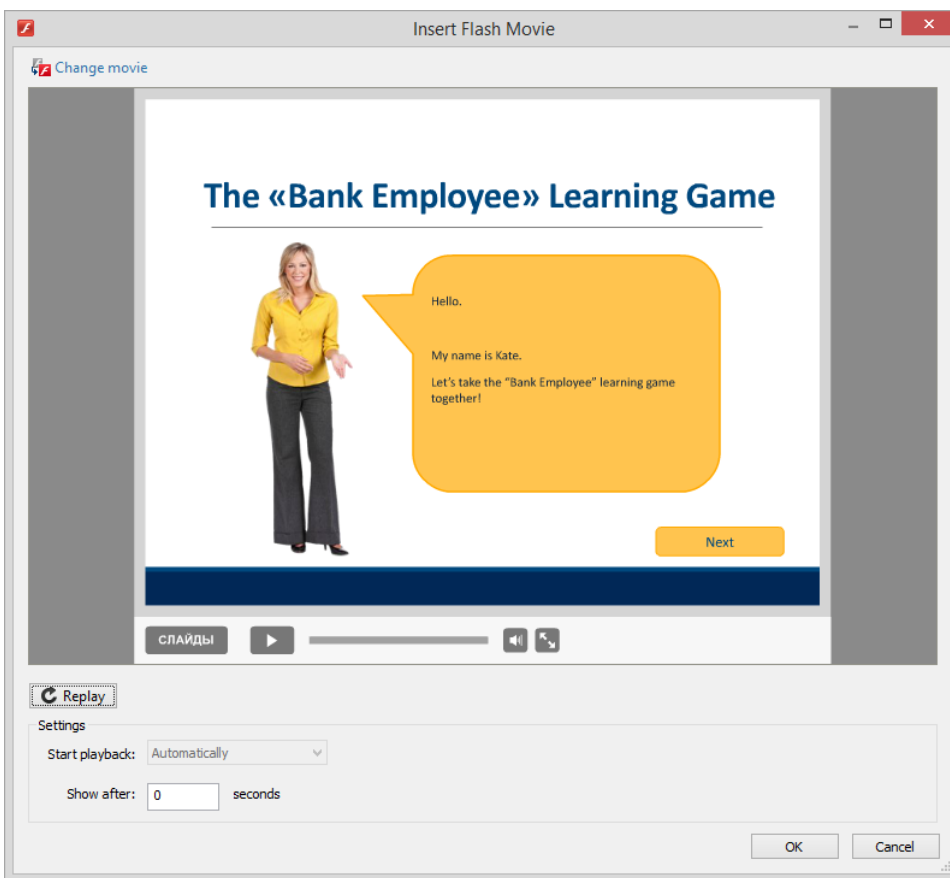
The **Insert Flash** feature allows you to easily insert external Flash movies into your PowerPoint slides.

You can import **.swf** or **.flv** files to the slide.



To insert a Flash movie, follow these steps:

1. Click the **Flash Movie** button on the iSpring toolbar.
2. Choose a Flash file to be inserted into the presentation and click **Open**.
3. Preview and edit the selected Flash file in the **Insert Flash Movie** window. For more details, see [Flash Movie Options](#) below.
4. Click **OK** to add your Flash Movie to the slide.



You will see the first frame of an **.swf** file or a static placeholder if you added an **.flv** file. The inserted Flash movie can be easily resized and moved within the slide.

Settings	Description
<b>Change movie</b>	This option allows you to navigate to your Flash file and replace the existing one.
<b>Start playback</b>	This options allows you to set the Flash Movie to play automatically or on a mouse click.
<b>Show after</b>	This option allows you to specify when your Flash Movie will appear on a slide. The default delay is 0 seconds, which means that a Flash Movie appears immediately.