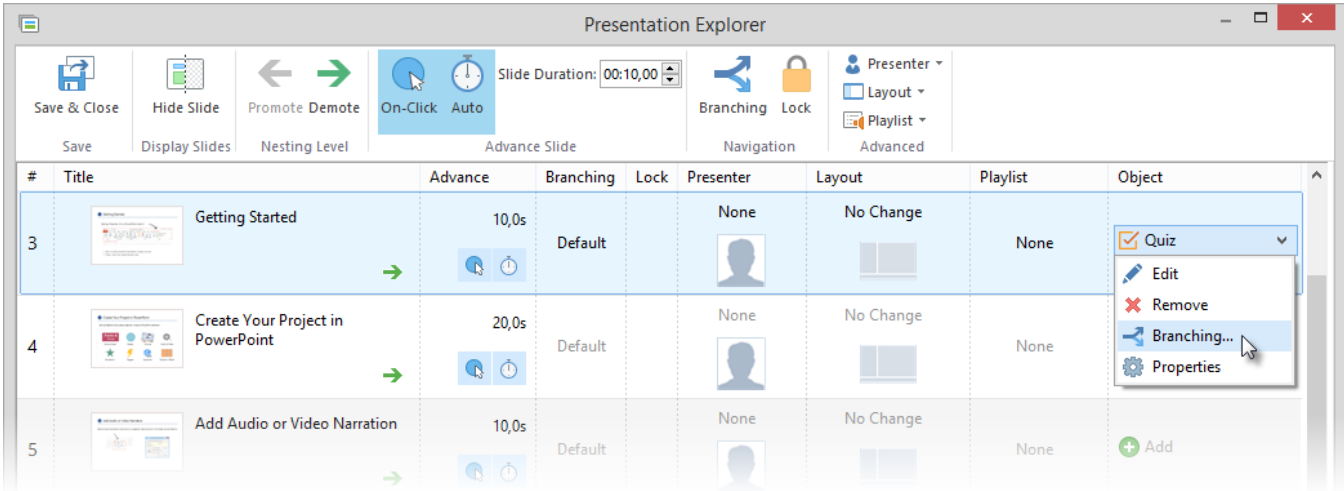
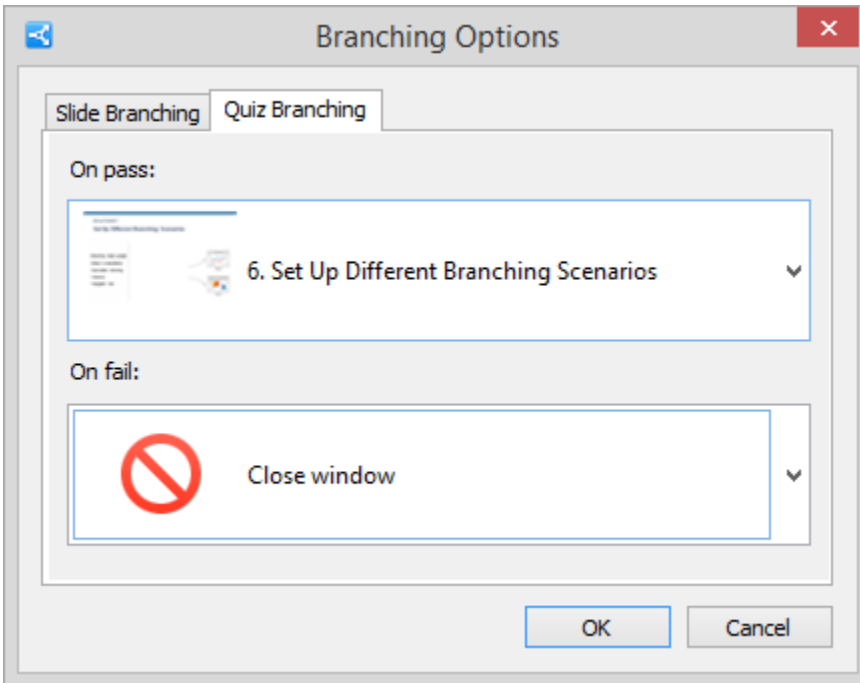


Quiz-based Branching

By adding branching to your quizzes, you can send a learner to a particular slide depending on his/her quiz results. Select **Branching** in the menu or on the toolbar to open the **Branching Options** window.



In the **Branching Options** window select the **Quiz Branching** tab to specify actions for the successful and unsuccessful completion of the quiz. By default, a user will be taken to the next slide.



Quiz properties

On pass	<p>This option defines what action will be performed on the click of the Finish button when the quiz is passed.</p> <p>The available actions:</p> <ul style="list-style-type: none"> • Go to the next slide • Close the window • Go to the slide with a specified number
On fail	<p>This option defines what action will be performed on the click of the Finish button when the quiz is failed. The available options:</p> <ul style="list-style-type: none"> • Go to the next slide • Close the window <p>Slide N (Go to the slide with a specified number)</p>

Additionally, you can specify the forward and backward actions that will be performed if a user skips the quiz.

Switch to the **Slide Branching** tab and adjust the navigation buttons (Skip Quiz/Previous) to take the learner to:

- the Next Slide/Previous Slide
- any particular slide.

