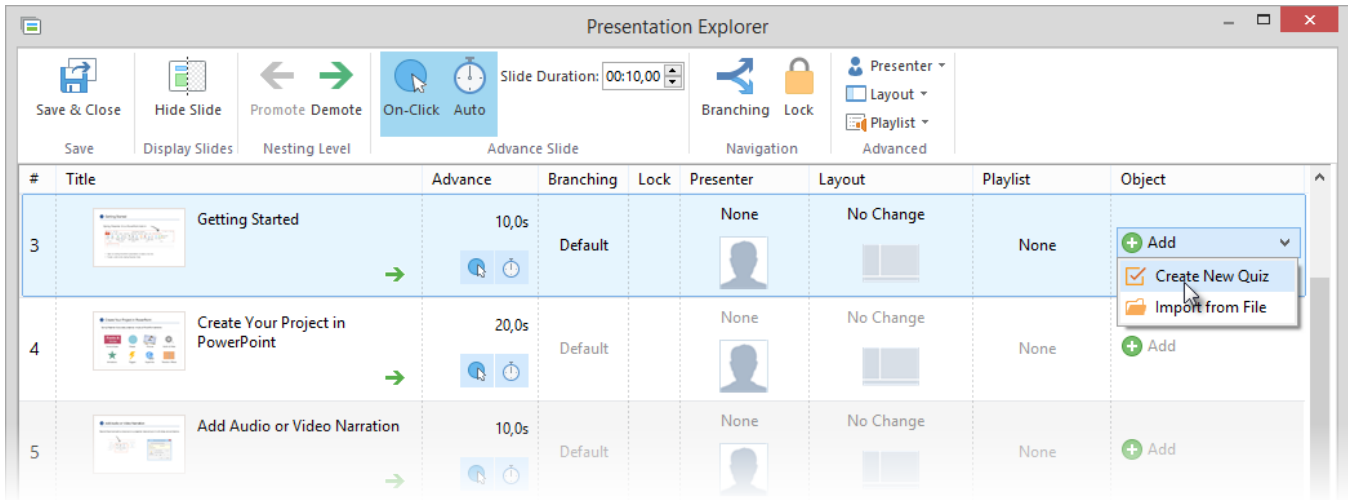


# Adding Quizzes

iSpring's Presentation Explorer allows you to insert quizzes into PowerPoint slides using the Object column.

To add a quiz to a particular slide:

1. Click the **Add** button in the **Object** column
2. Select one of the options from the drop-down menu:
  - **Create New Quiz** - Select this option to create a new quiz in the iSpring QuizMaker editor.
  - **Import from File** - This option allows you to select one of the existing quizzes to insert into the slide.



Once you add your quiz to a course, you can open it for editing in iSpring QuizMaker, remove it from the slide, customize the [Quiz Branching Options](#), and set the [Quiz Properties](#).

Read [iSpring QuizMaker User Guide](#) to learn how to create quizzes.