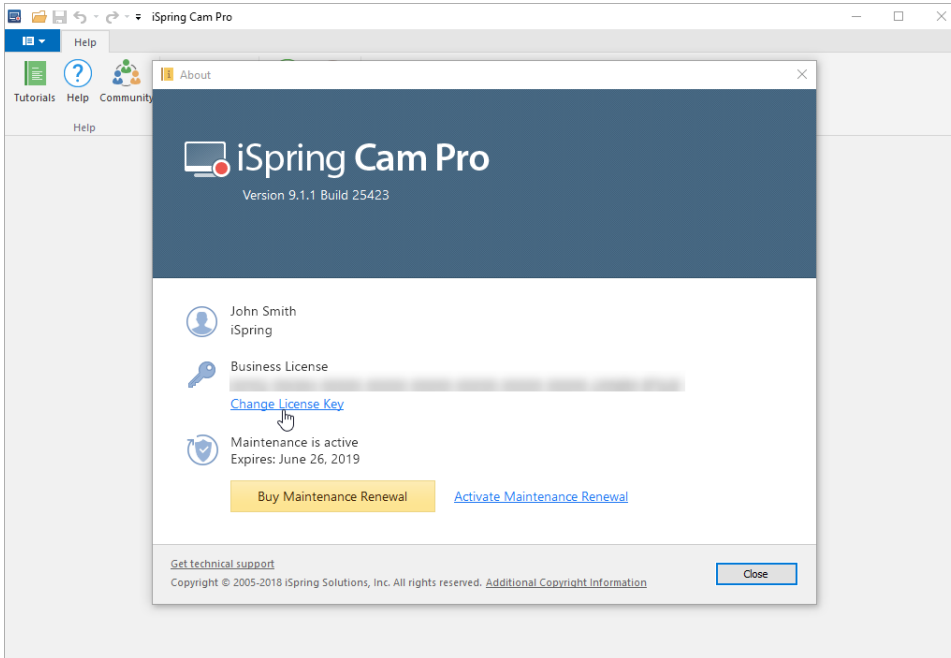


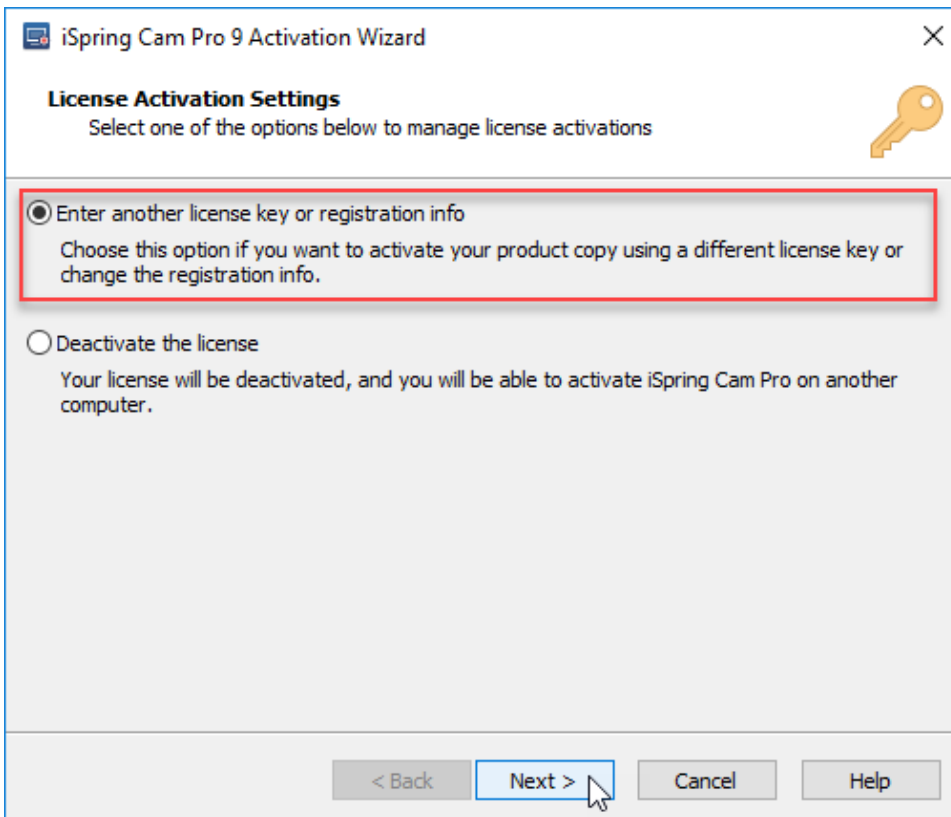
# Changing License Key or Registration Info

To enter another license key or change the registration information please perform the following steps:

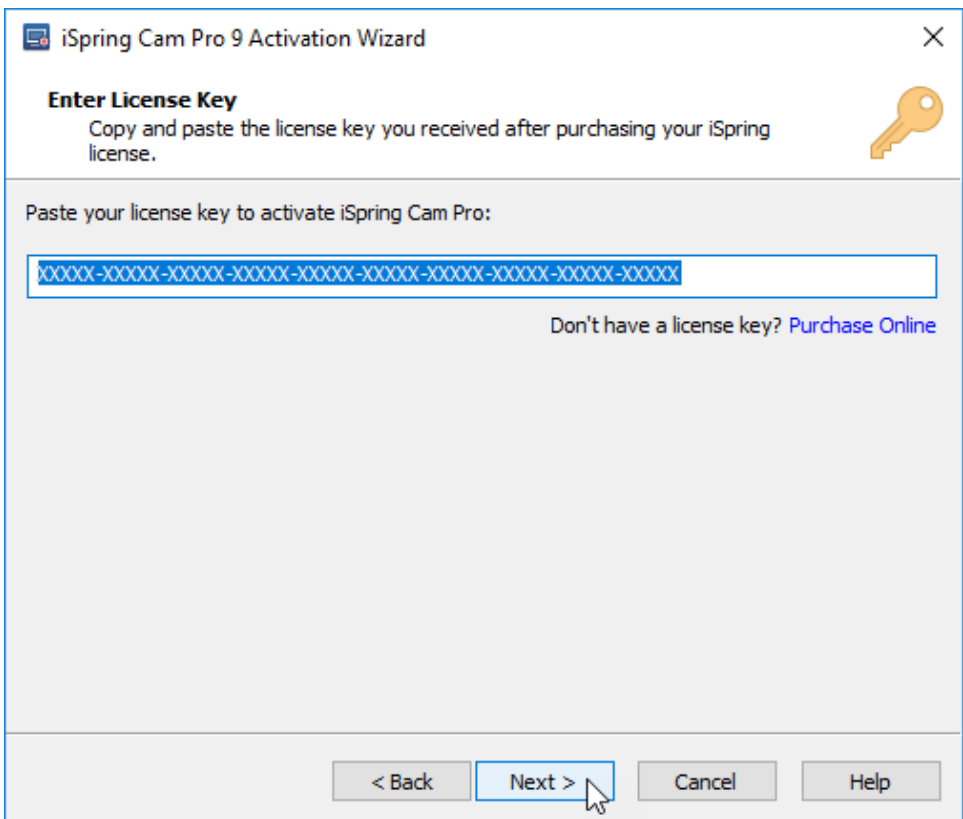
1. In the **Help** tab open the **About** window and click **Change License Key**.



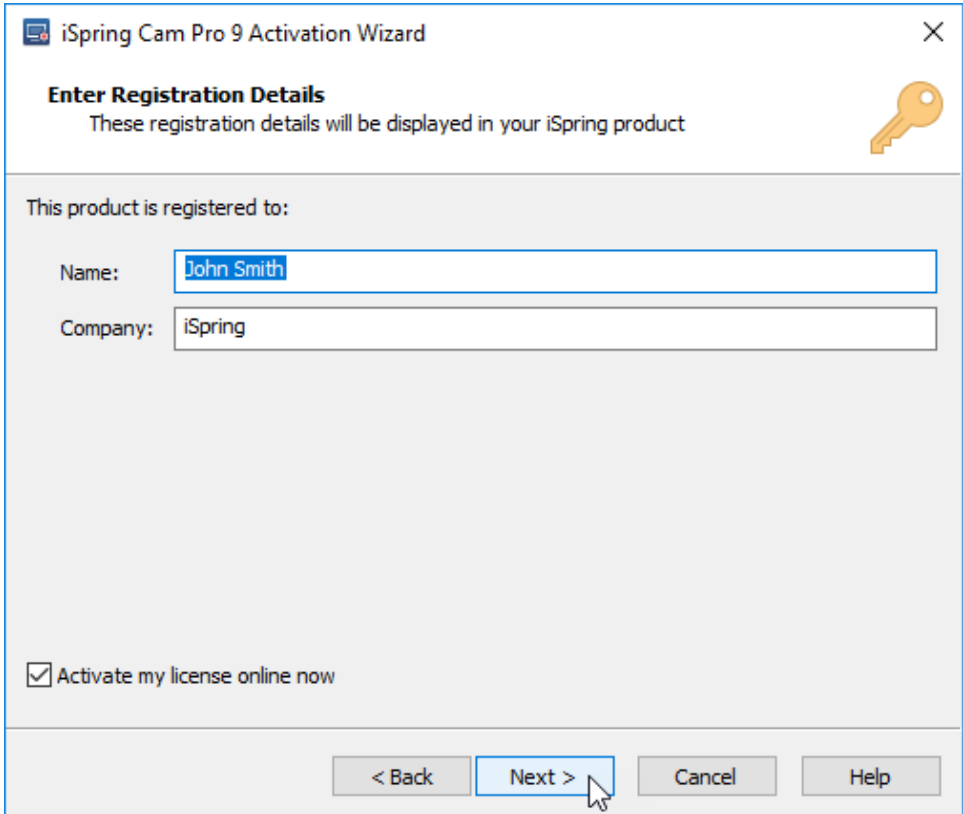
2. Choose **Enter another license key or registration info**. Click **Next**.



3. Then, enter your new license key and click **Next**.



4. Finally, enter the new name and company name and click **Next**.



After successful activation the new information will be displayed in the **About** window.