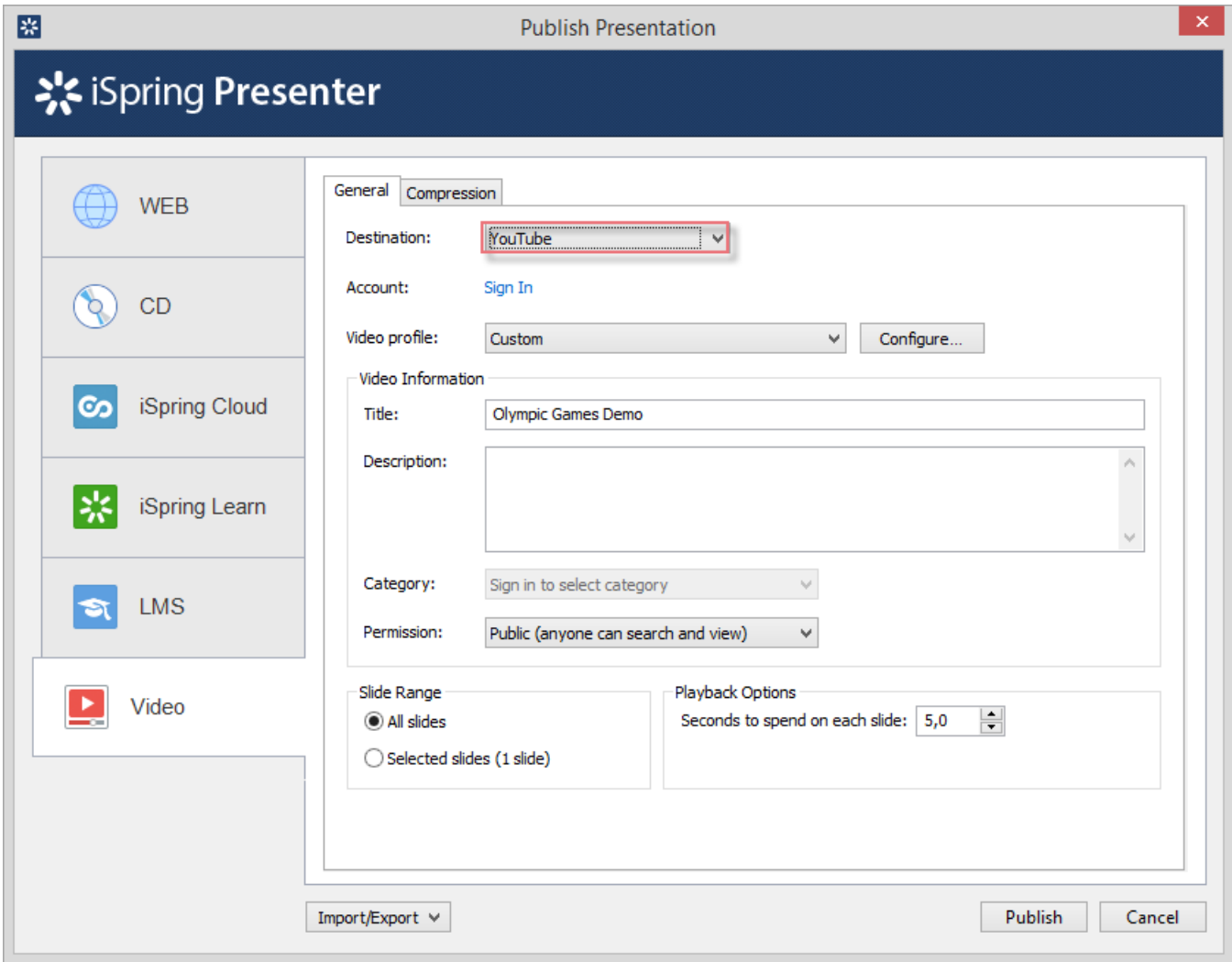


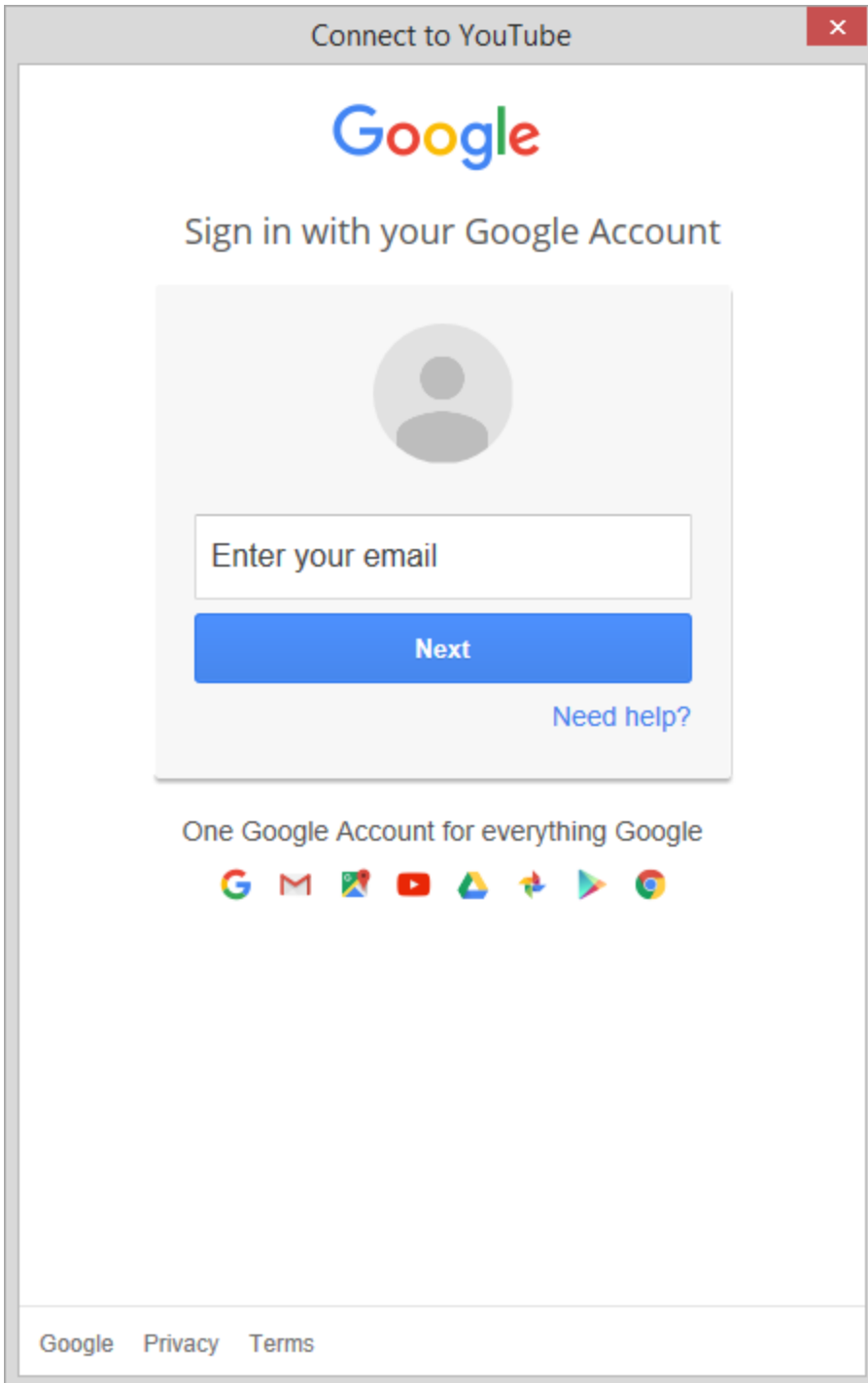
# Publishing to YouTube

With the **Publish to YouTube** option, you can put your video lectures on YouTube right from the iSpring publishing window. No need to save a video to your computer: just sign in to your account right there and click Publish.



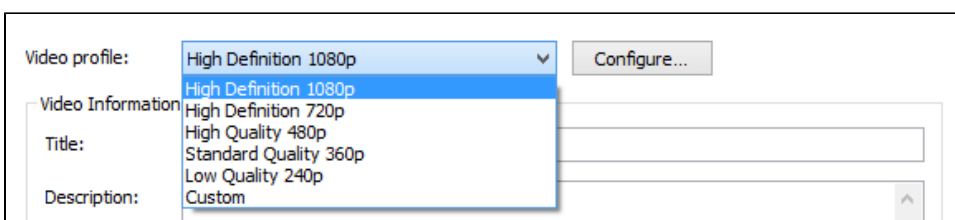
See the step-by-step instructions for uploading a video presentation to YouTube below:

1. Choose **YouTube** in the Destination field
2. Click **Sign In** in the Account field. You will see a window where you can enter your YouTube account details.

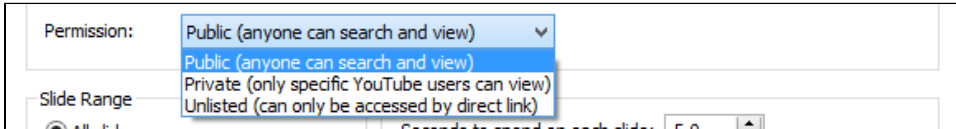


If you don't have a YouTube account, sign up for YouTube and create your personal channel. Please read the article [Create an account on YouTube](#) for more details.


3. Click **Sign In**. When you enter your account details, iSpring validates this data, and you will see your YouTube account info in the **Account** field.
4. Select a **video profile** depending on the device type



- 5. Change **Video Information**: title, description, category
- 6. Choose viewing **permissions** for a video file: public, private, and unlisted



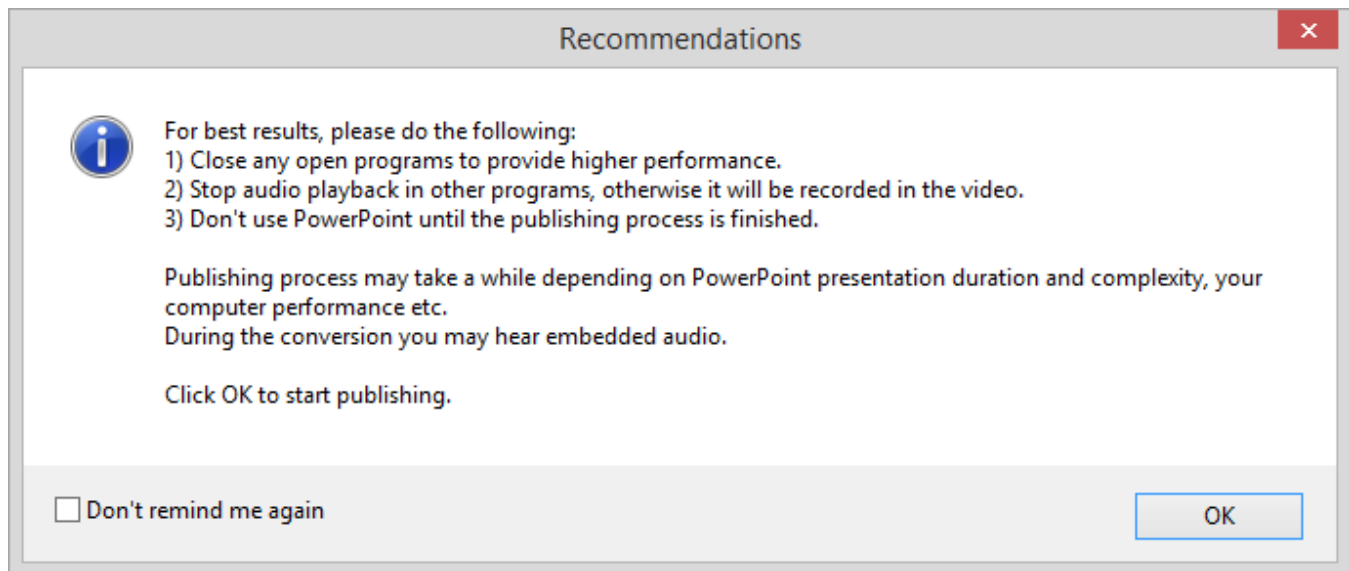
- 7. Specify the time to spend on a slide in the **Playback Options**

 If you selected individual slide timings and set the automatic playback of the animation effects for your PowerPoint presentation, these settings will be preserved in the resulting video file. You can select different timing properties for each particular slide in PowerPoint. It's recommended to use the following settings if your presentation contains animations and transitional effects:

- a. Change the start option for each animation effect on the Animations tab: choose 'Start With Previous' and 'Start After Previous'
- b. Set the Duration and Delay options of each effect (if necessary)
- c. Select the 'On Mouse Click' check box on the Transitions tab to advance the slide when you click the mouse

- 8. Click **Publish** to convert your presentation to a video file and upload it to YouTube.

Pay attention to the recommendations list that you'll see in the pop up window after you click Publish.



Once publishing is finished, the video processing window will automatically pop up. Next, you can go to your video channel, and manage your video in the Video Manager of your YouTube account.