

General Options

The **General** tab allows you to specify the output of your PowerPoint presentation: title, destination and format.

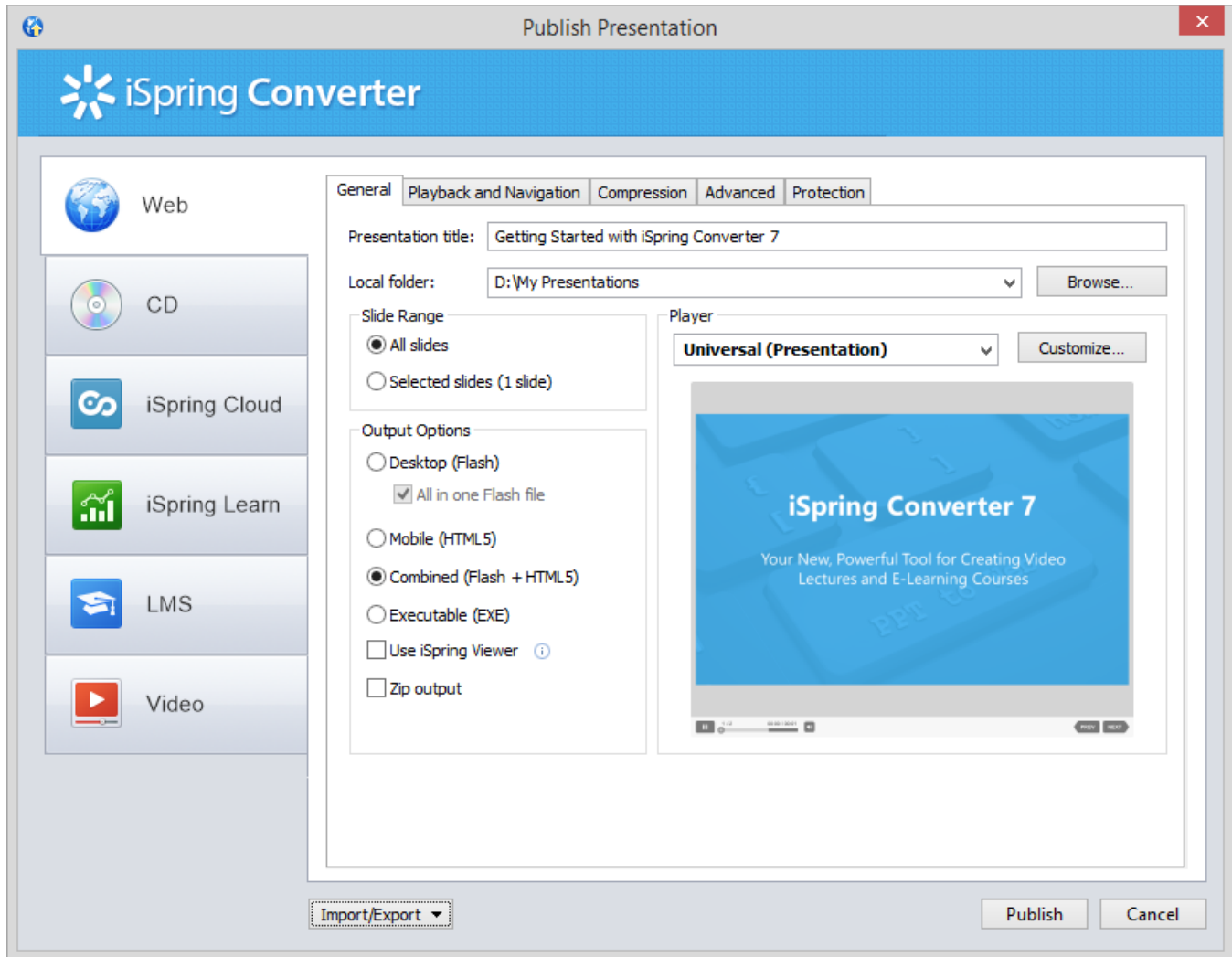


Table 1. Destination Options

Option	Description
Presentation title	A title of your presentation.
Local folder	A local folder where you want to publish your presentation to.

Table 2. Slide Range Options

Option	Description
All slides	Select this option if you want to convert the <i>entire</i> presentation into Flash and HTML5 format.
Selected slides	This option will allow you to publish only selected slides from your presentation. <ul style="list-style-type: none"> • Select necessary slides from within PowerPoint • Choose the Selected slides option • Publish your presentation.

Table 3. Output Options

Option	Description
Desktop (Flash)	Presentation will be converted into a Flash movie. You can view it in any browser with Flash plugin on any desktop operating system.
All in one Flash file	All slides of a presentation will be converted into a solid Flash movie with all external resources embedded in one .swf file. To view the presentation, run the .swf file in the output folder with the name that you specified while publishing.
Mobile (HTML5)	Presentation will be converted into the HTML5 format. A great advantage of HTML5 presentations is that they can be viewed on any mobile device, including iPads.
Combined (Flash + HTML5)	Presentation will be published as a "smart" package which can be successfully launched on both desktop and mobile devices.
Executable (EXE)	If selected, iSpring Pro generates an executable (.exe) file with the Flash output. It can be displayed everywhere, even if you don't have the Flash Player installed. To view the presentation, run the .exe file in the output folder with the name that you specified while publishing.
Use iSpring Viewer	Select this checkbox to view a presentation on an iPad and allow users to store presentations locally for offline viewing.
Zip output	Select this checkbox if you want to publish your presentation as a ZIP archive.

Table 4. Player Template Options

Option	Description
Player	Select a player from the drop-down menu. You can select one of the available players (Universal or None) or add a custom player by installing it from a special package.
Customize	This button gets enabled if the selected player can be customized. Click this button to open the customization window of the selected player. The Live Preview feature shows how your presentation will look after conversion.

Table 5. iSpring Learn Options

Option	Description
Upload source files	Check this box to allow uploading the project source files to iSpring Learn. Tip: You can use this option both for team-work on the project and for creating backups of source files.

Table 6. Video Presentation Options

Option	Description
Destination	Choose the place where you want to save your video presentation: My Computer or YouTube . <ul style="list-style-type: none"> • My Computer - presentation will be converted to an .mp4 and saved on your hard drive. • YouTube - presentation will be converted to an .mp4 file and uploaded to YouTube.
Video profile	Select a video profile to choose the most suitable resolution depending on the device. You have the following preset options: <ul style="list-style-type: none"> • Original slide size – slide dimensions will be preserved in the resulting video. • Computer and HD Displays – generates a video of higher resolution and quality for viewing on large format displays. • Internet and DVD – generates a medium-resolution video for saving on DVD and distributing online. • Portable Devices – creates a low-resolution video for viewing on mobile devices. • Custom – you can type in any desired settings for a custom resolution.
Playback Options	Specify the time to spend on a slide in the resulting video. You can set timings in seconds or sub-seconds. If you selected individual slide timings and set the automatic playback of the animation effects for your PowerPoint presentation, these settings will be preserved in the resulting video file.

