

Learning Course Settings

The **Learning Course** tab allows you to select your course type, set information about the presentation - customize settings for your training course and choose how to report the completion status to an LMS.

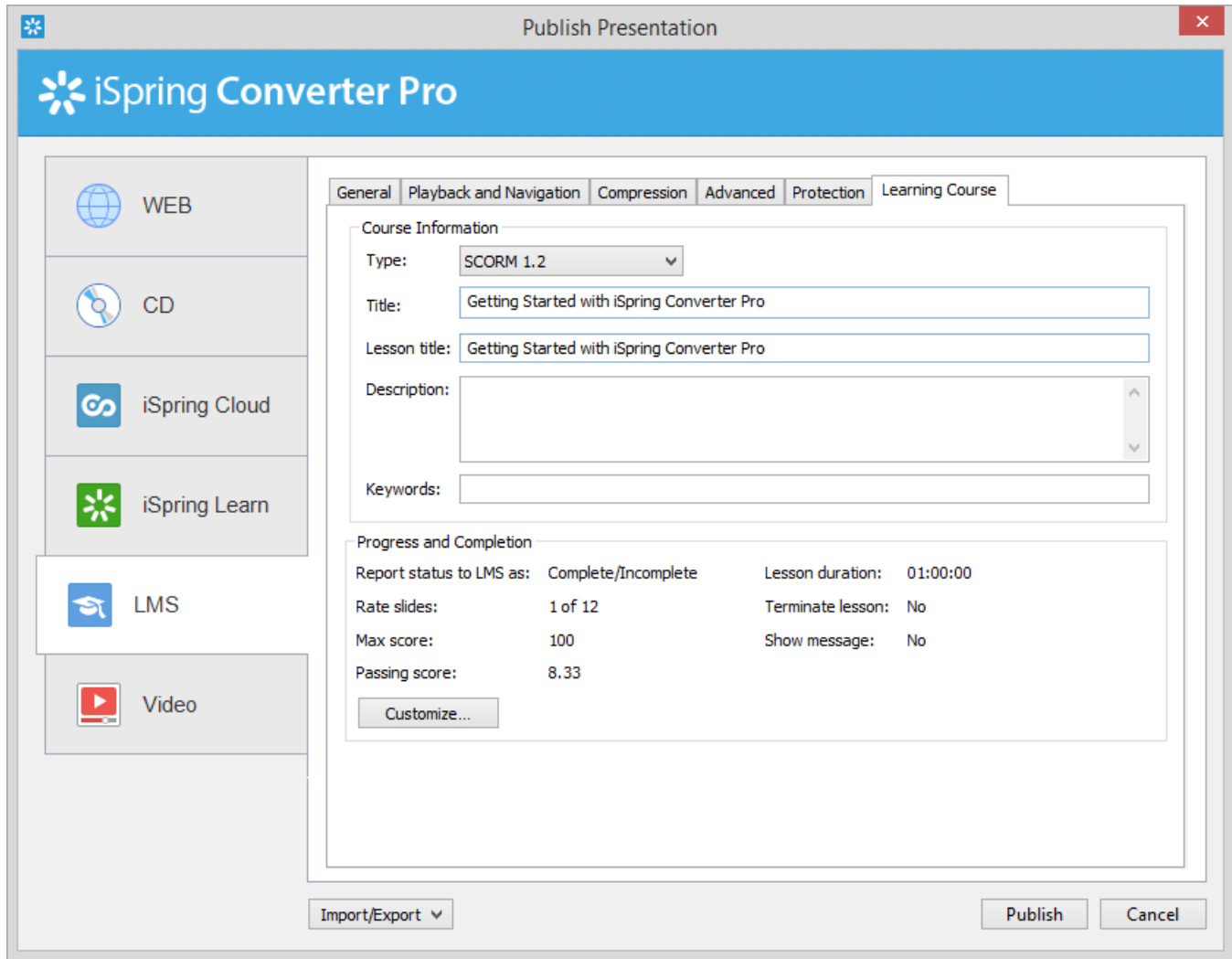


Table 1. Course Information

| Option | Description |
|---------------------|---|
| Type | Select a type of standard for your training course: SCORM 1.2, 2004, AICC, Blackboard 9.x and Experience API. You can learn more about SCORM versions , AICC and Experience API features and differences between them on Wikipedia. |
| Title | Put your training course name here. |
| Lesson title | Put in your lesson name. |
| Description | Type in a brief description of your training course here. |
| Keywords | Specify keywords for your LMS. They will help people find your training course by these keywords. |
| Tags | Tags are a powerful and useful tool to arrange content by themes. Add tags separated with commas. |
| Author | Specify the author of the presentation. If the field remains empty, the owner of the iSpring Learn account will be set as the author by default. |

| | |
|-----------------------|--|
| xAPI end point | Specify the address of the Learning Record Store (LRS) that stores learning records. |
|-----------------------|--|

Click the **Customize** button to configure the Progress and Completion settings.

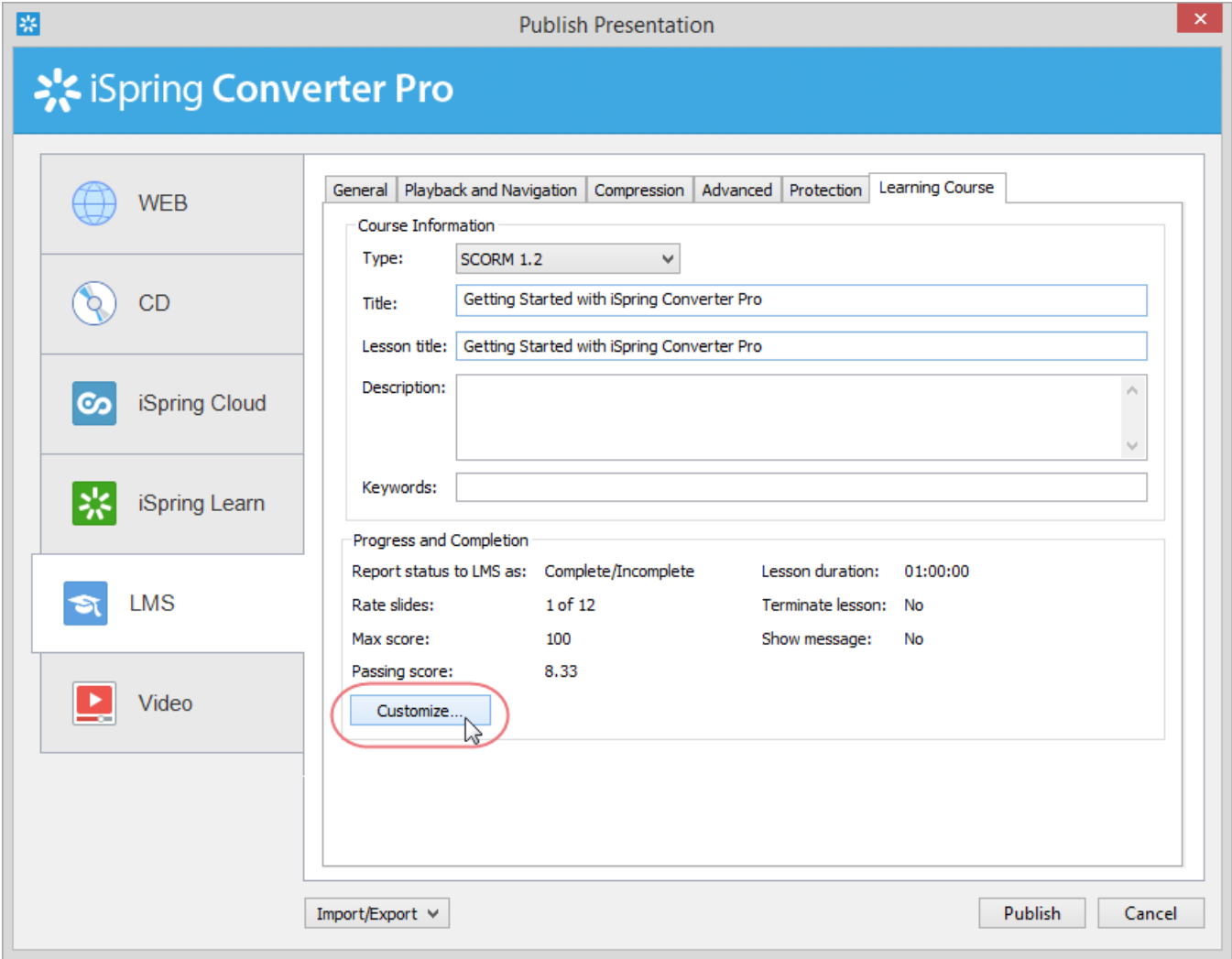


Table 2. Progress and Completion

| Option | Description |
|--------------------------------|--|
| Report status to LMS as | Choose the completion status, that will be sent to your LMS on successful/unsuccessful completion. |
| Rate slides | Set a minimum number of slides a learner must view to complete the lesson. |
| Max score | Specify the maximum score that can be awarded for your lesson. |
| Passing score | The program calculates the passing score for your course automatically, but you can select this checkbox and change the score a student needs to pass your lesson. |
| Lesson duration | The time given for the lesson. It is implied that students would learn the lesson well during the specified period of time. |
| Timeout actions | When the time given to the lesson is out, you can choose the following actions: terminate a lesson and/or show a message that the time has run out. |

Experience API Endpoint (Tin Can)

Experience API content can be hosted and launched outside of the LMS. To track the course statistics:

- Specify the LRS address in the xAPI endpoint field.
- Click **Options** to define additional parameters.

The screenshot shows a configuration window with tabs: General, Playback and Navigation, Compression, Advanced, Protection, and Learning Course. Under the 'Learning Course' tab, there is a 'Course Information' section with fields for Type (Experience API), Title (iSpring Overview), Identifier (57C0A4FB-E618-42BB-BFD6-C8792CB50DFC), and Description. At the bottom, the 'xAPI endpoint' checkbox is checked, and the text 'http://mylrs.com' is entered in the adjacent field. An 'Options...' button is located to the right of the endpoint field.

The 'xAPI endpoint options' dialog box is divided into two sections. The 'Security' section includes a dropdown menu set to 'Basic Authentication', a 'Login' field with 'lrslogin', and a 'Password' field with masked characters. The 'Learner information' section includes a 'Name' field with 'Respondent' and an 'Email' field with 'respondent@test.com'. 'OK' and 'Cancel' buttons are at the bottom.

Table 3. xAPI endpoint options

| Option | Description |
|-----------------------|---|
| Login/Password | Enter access credentials to the LRS. |
| Name/Email | Specify the sender's details that will be used for sending statistics |

Partial information may also be filled into the xAPI endpoint options dialog. In this case, user will be prompted to enter the necessary information.

CMI5 (Experimental)

CMI5 is a set of rules providing all the capabilities of SCORM and xAPI at the same time. Students can take course materials when there's no Internet connection with special mobile apps. The progress will be saved and sent to the LMS once the connection is restored.

In the **Launch method** field, choose if your course should open in a new browser window (**Own window**) or according to the LMS settings that apply to all courses in it (**Any window**).

iSpring Converter Pro

WEB

CD

iSpring Cloud

iSpring Learn

LMS

Video

General Playback and Navigation Compression Advanced Protection Learning Course

Course Information

Type: CMI-5 (Experimental)

Title: iSpring Overview

Identifier: C1D0B07F-FA38-48AF-B647-AFE48D99D8CA

Description:

Launch method: Any Window
Any Window
Own Window

Progress and Completion

Rate slides: 1 of 1

Max score: 100

Passing score: 100

Customize...

[Learn more about progress and completion settings](#)

Import/Export

Publish

Cancel