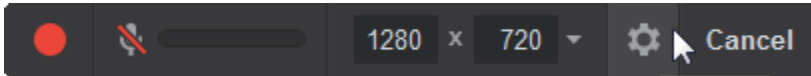


# Setting Up the Microphone

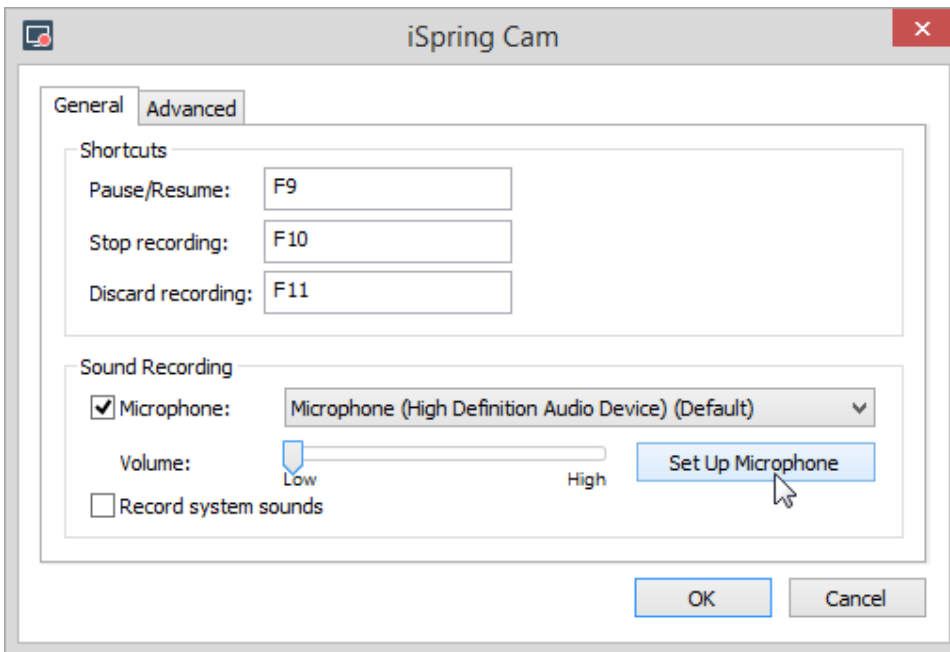
Before you start recording new voice-overs and narrations, you can set up your mic. With the new Microphone Setup Wizard, you can verify that your audio is set up correctly. Simply connect the microphone, run the Wizard to set volume and mic sensitivity, and use it to record new voice-overs.

Follow these detailed instructions below to setup your mic:

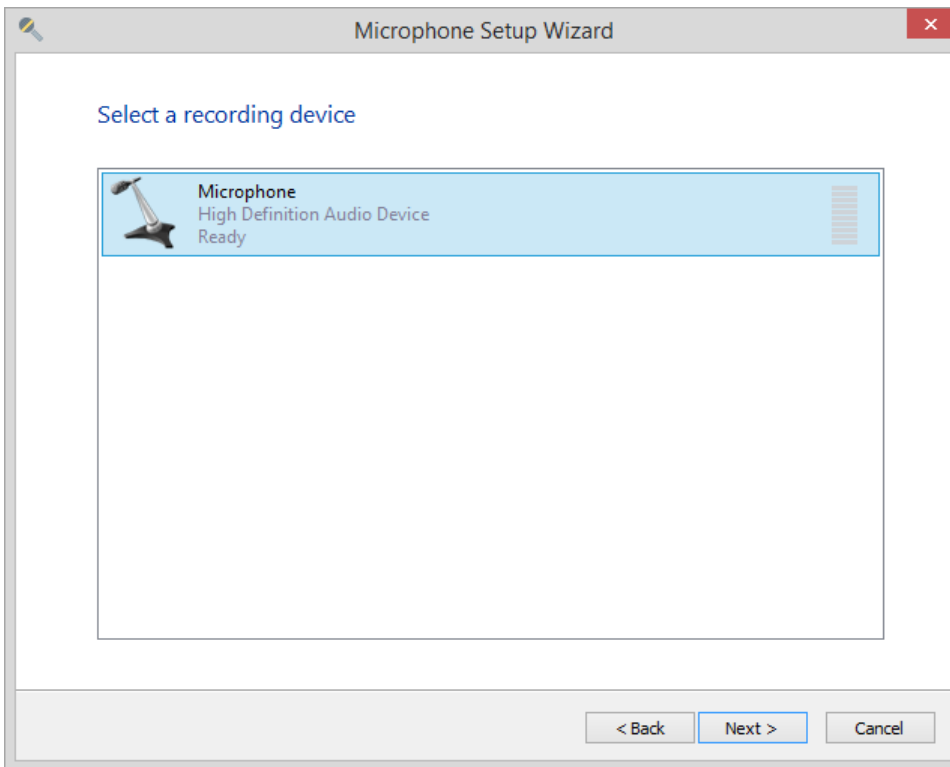
1. Open the iSpring Cam Settings.



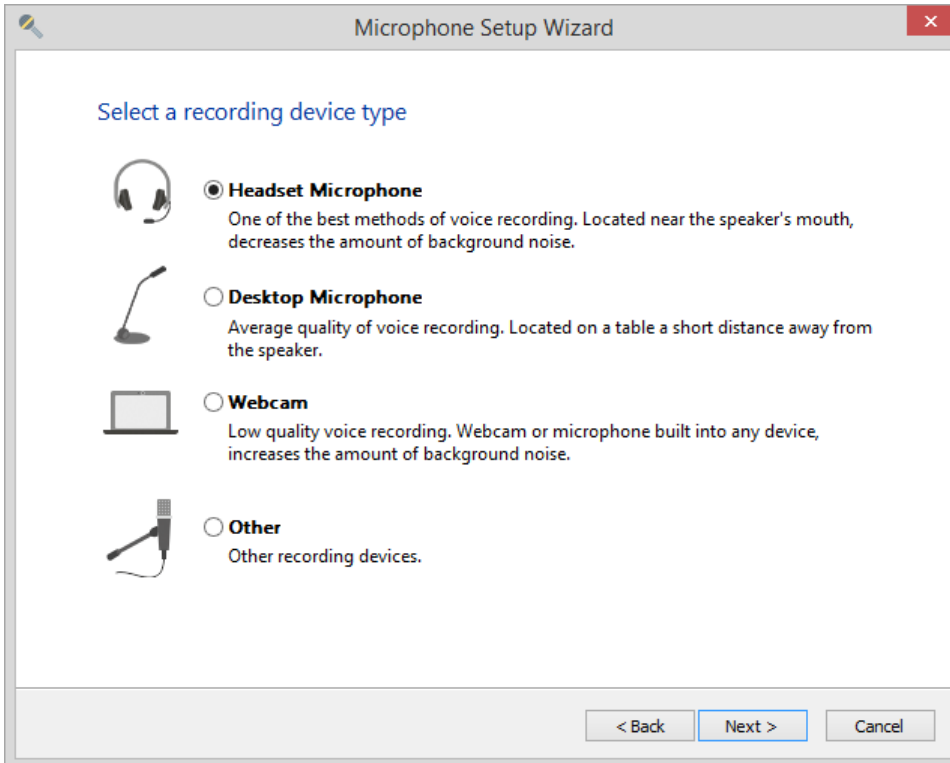
2. Start the Wizard by clicking **Set Up Microphone** and click **Next**.



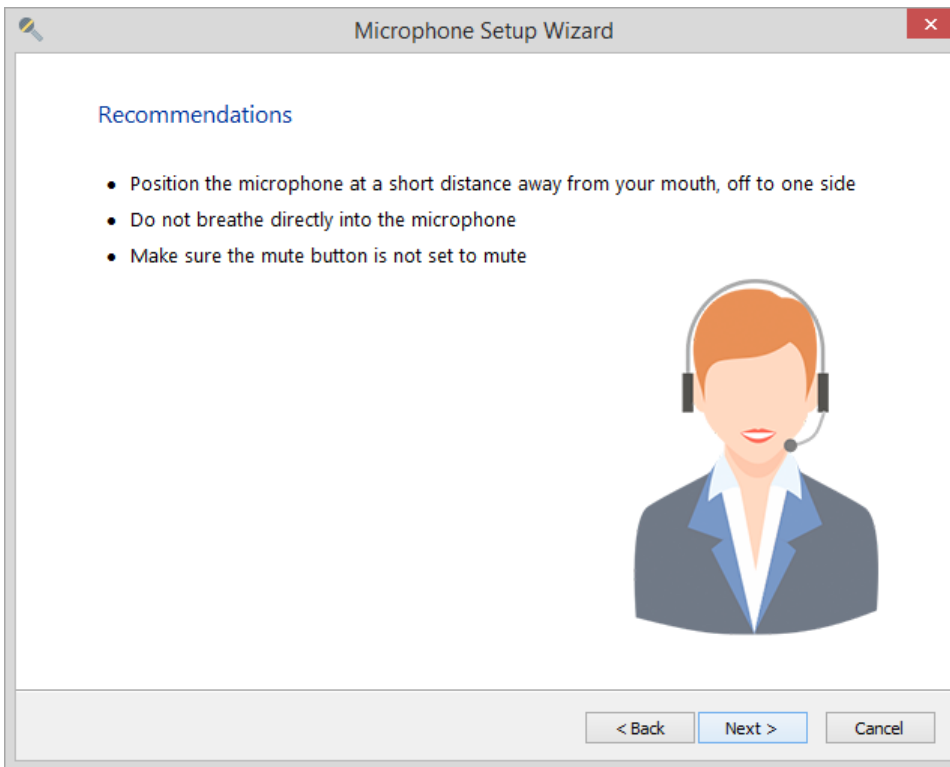
3. Now, select your mic in the list and click **Next**.



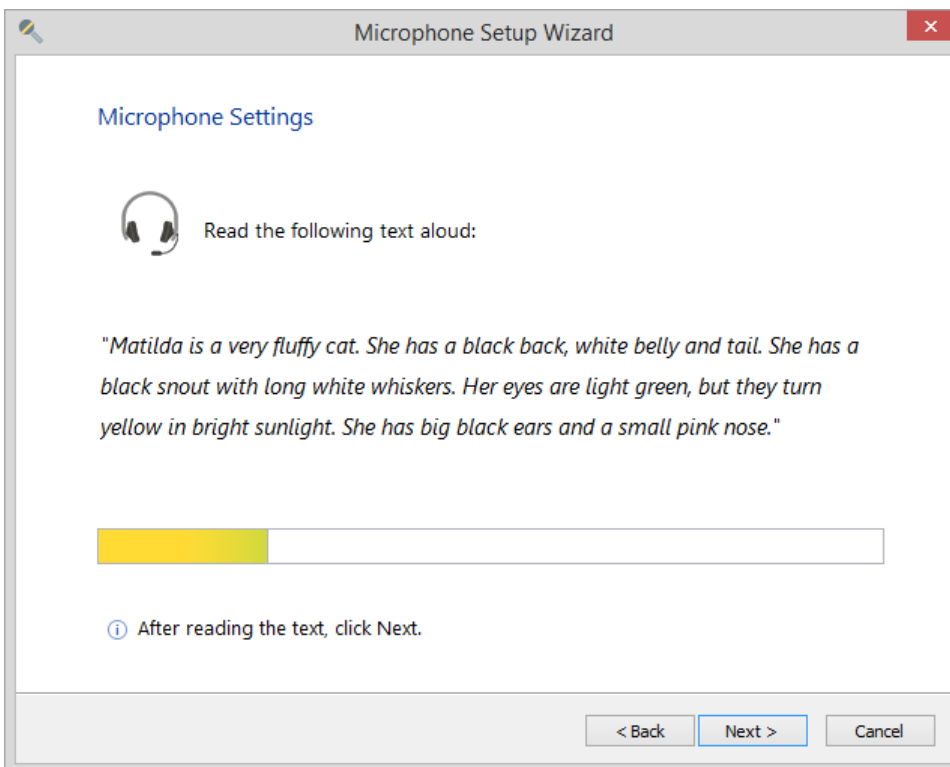
4. Next, select a recording device type and click **Next** to proceed.
- Headset microphone
  - Desktop Microphone
  - Webcam
  - Other – professional studio mic, clip-on mic etc.



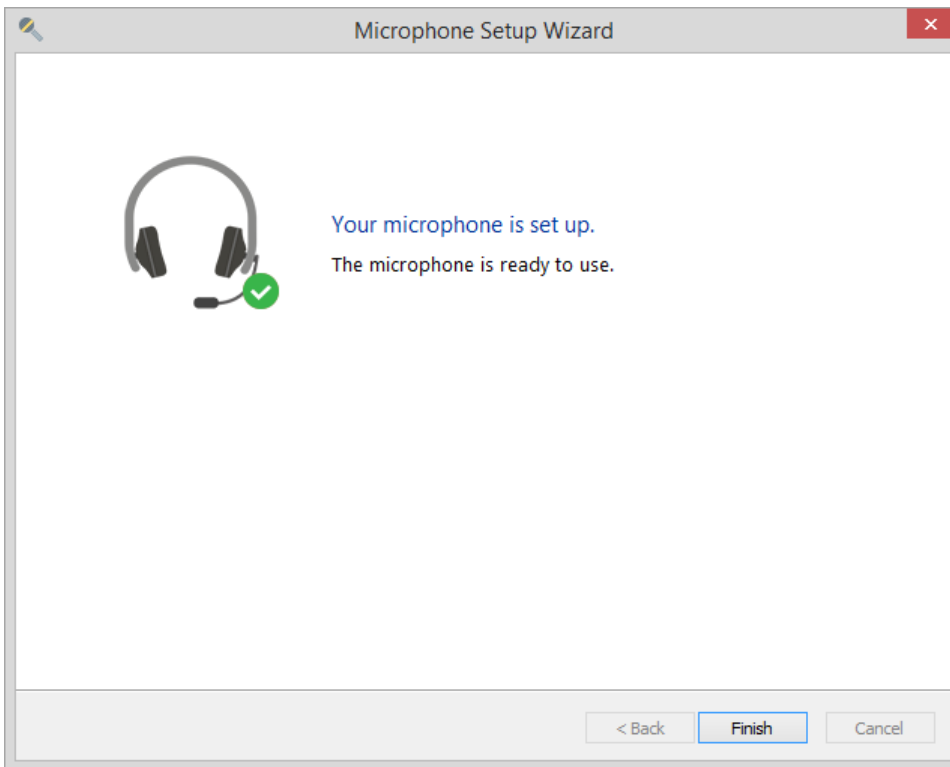
5. Check the recommendations at this step and click **Next**.



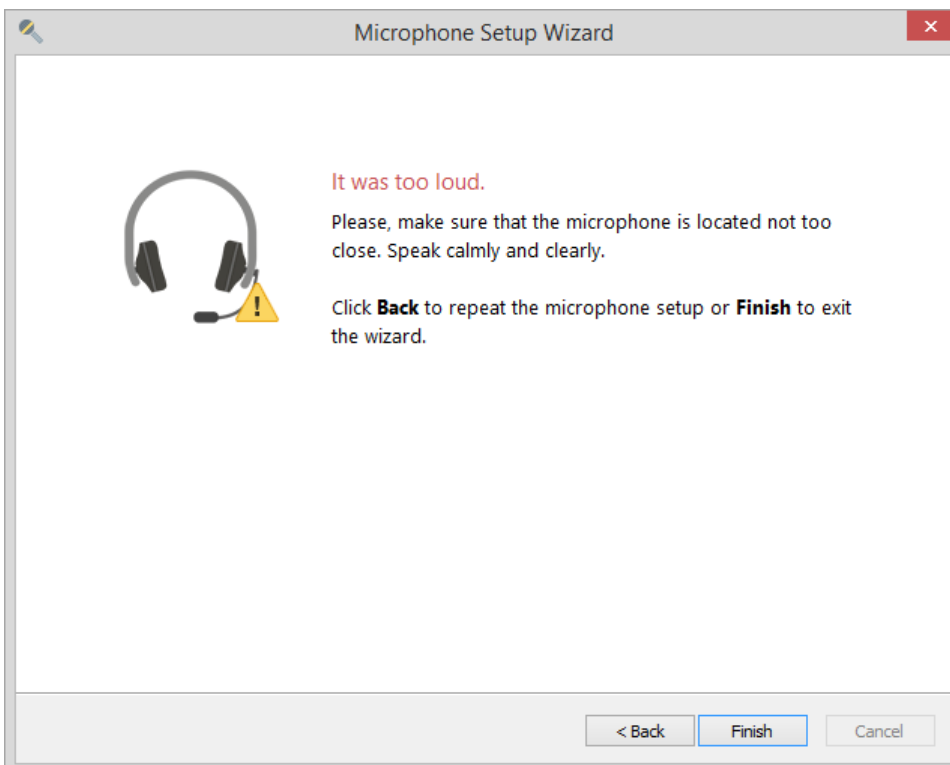
6. Read the text on the screen and click **Next**, when you are done.




7. If the setup finishes successfully, you will see a notification that your mic was properly configured and now it is ready to use.



8. The setup may fail due to a number of reasons. You will see the error description on the screen. You can click **Back** and repeat recording following the recommendations on the error screen.



9. If you see the **Change microphone** screen, it's highly recommended to change the microphone, select another device in the list and complete the setup.

 If you are switching from one mic plugged in your computer to another, run the Setup Wizard for the new device.