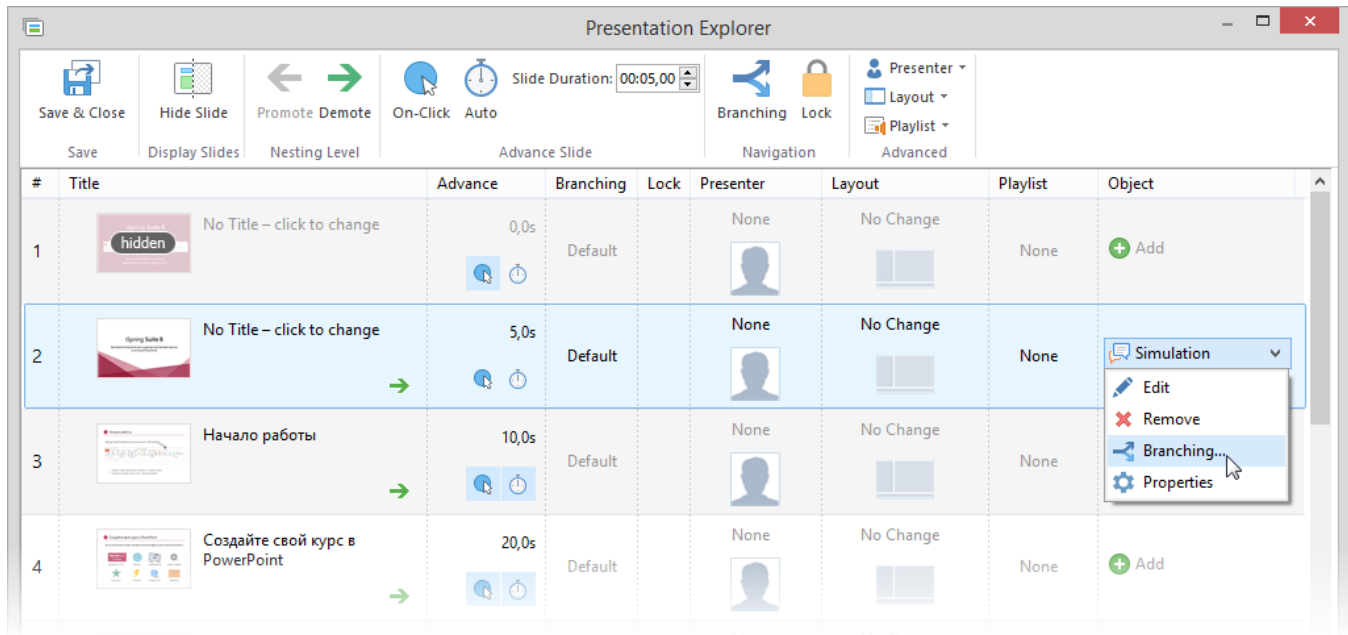
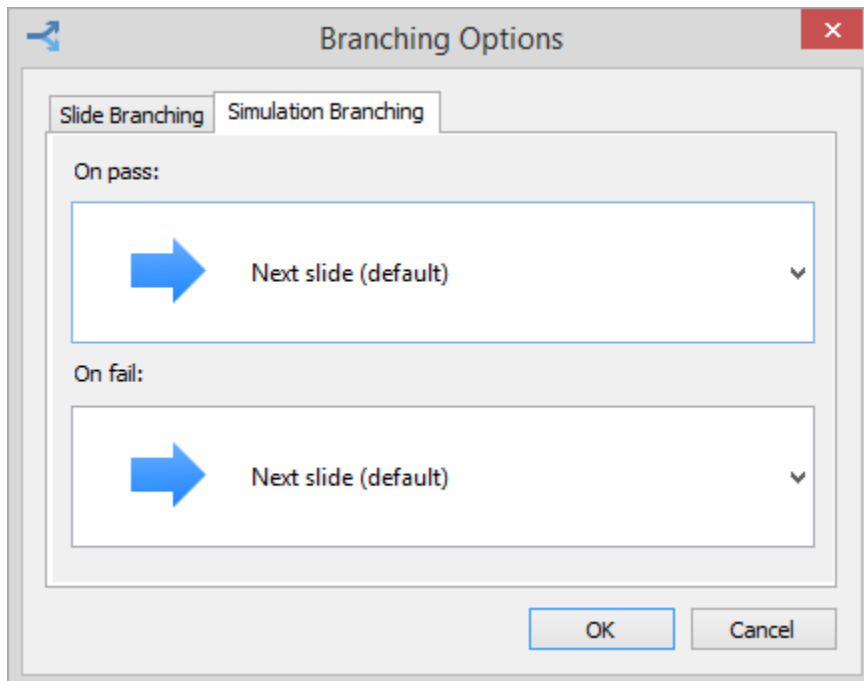


# Simulation Branching

By adding branching to your simulations, you can send a learner to a particular slide depending on his/her results. Select **Branching** in the menu or on the toolbar to open the **Branching Options** window.



In the **Branching Options** window, select the **Simulation Branching** tab to specify actions for the successful and unsuccessful completion of the simulation. By default, a user will be taken to the next slide.



Simulation properties

<b>On pass</b>	<p>This option defines what action will be performed on the click of the <b>Finish</b> button when the simulation is passed.</p> <p>The available actions:</p> <ul style="list-style-type: none"> <li>• Go to the next slide</li> <li>• Close the window</li> <li>• Go to the slide with a specified number</li> </ul>
<b>On fail</b>	<p>This option defines what action will be performed on the click of the <b>Finish</b> button when the simulation is failed. The available options:</p> <ul style="list-style-type: none"> <li>• Go to the next slide</li> <li>• Close the window</li> </ul> <p>Slide N (Go to the slide with a specified number)</p>

Additionally, you can specify the forward and backward actions that will be performed if a user skips the simulation. Switch to the **Slide Branching** tab and adjust the navigation buttons (Skip simulation/Previous) to take the learner to:

- the Next Slide/Previous Slide
- any particular slide.

