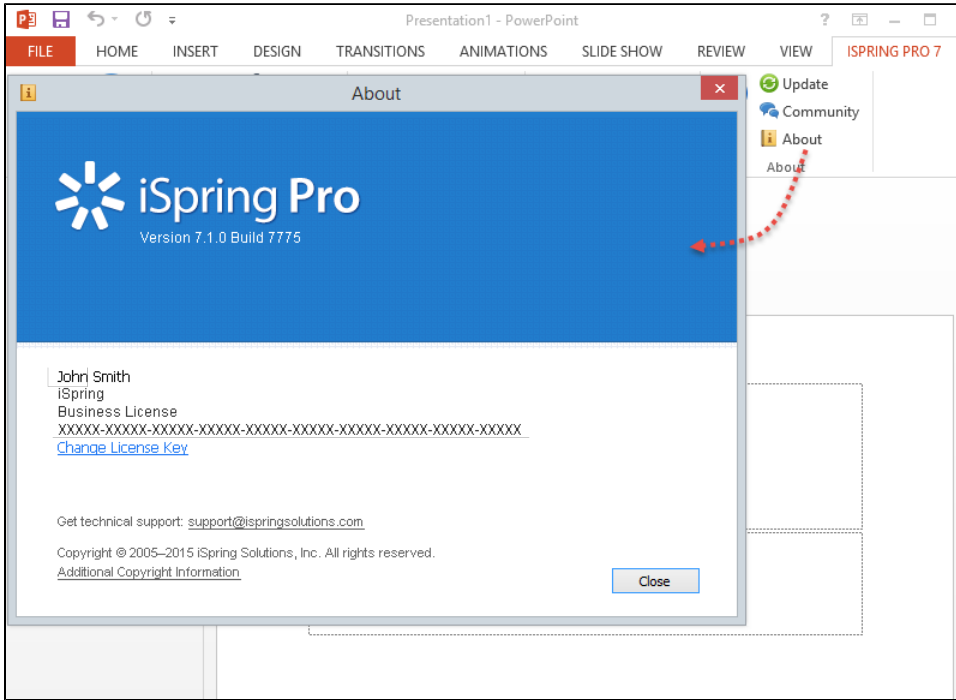


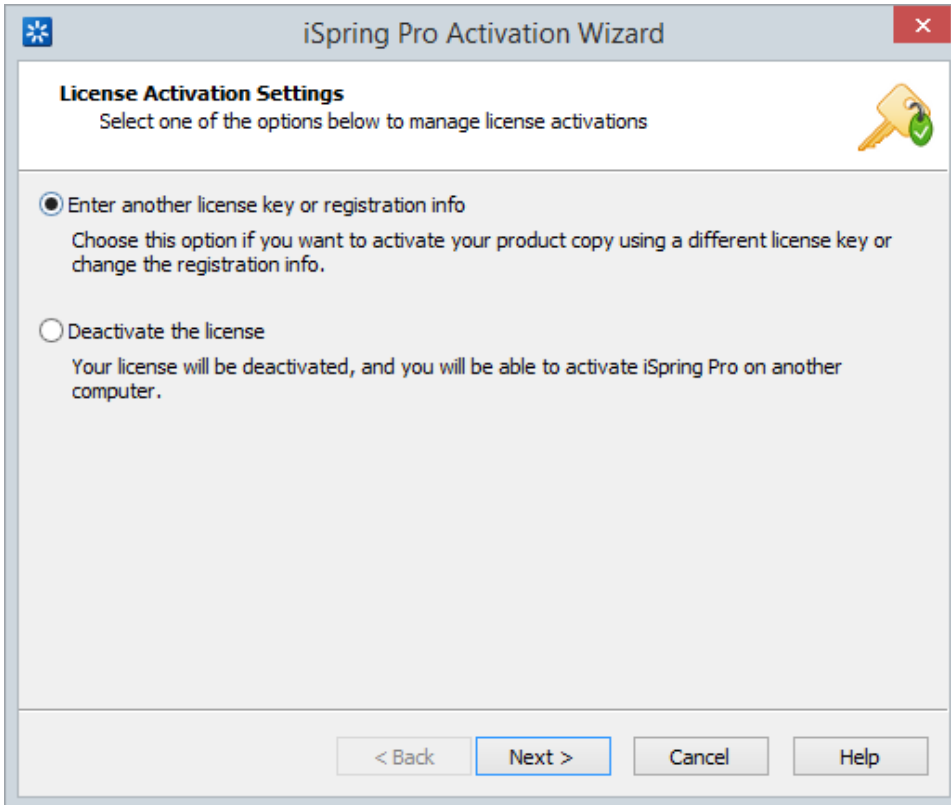
# Changing License Key or Registration Info

To enter another license key or change the registration information please perform the following steps:

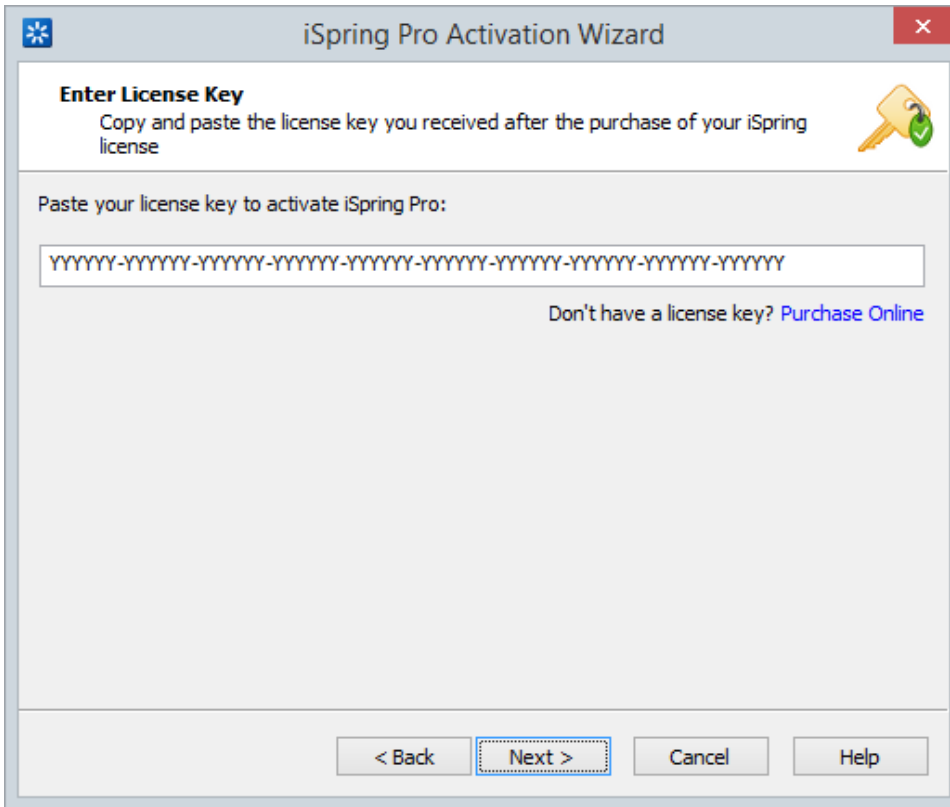
1. Click **About** in the Information section of the iSpring Pro toolbar. Click **Change License key** to run the iSpring Pro Activation Wizard.



2. Choose **Enter another license key or registration info**. Click **Next**.

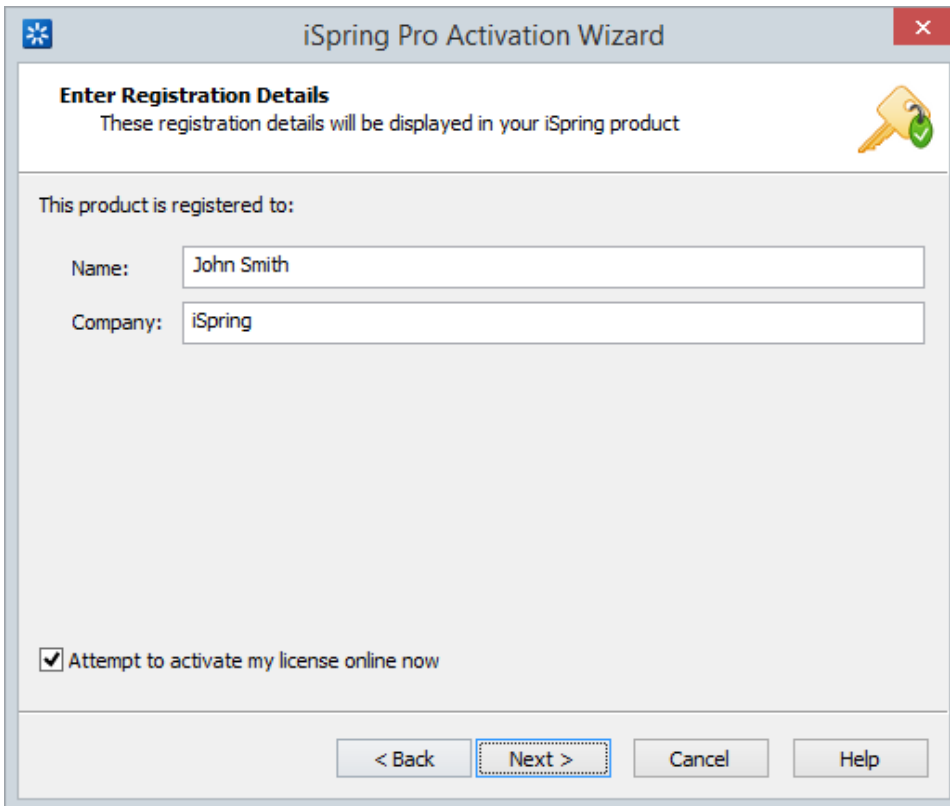


3. Enter your new license key and click **Next**.



The screenshot shows the 'iSpring Pro Activation Wizard' window. The title bar includes a blue asterisk icon, the text 'iSpring Pro Activation Wizard', and a red close button. The main content area is titled 'Enter License Key' and includes the instruction 'Copy and paste the license key you received after the purchase of your iSpring license'. A yellow key icon with a green checkmark is positioned to the right. Below the instruction, it says 'Paste your license key to activate iSpring Pro:' followed by a text input field containing a placeholder license key: 'YYYYYY-YYYYYY-YYYYYY-YYYYYY-YYYYYY-YYYYYY-YYYYYY-YYYYYY-YYYYYY'. To the right of the input field is a blue link that says 'Don't have a license key? Purchase Online'. At the bottom of the window, there are four buttons: '< Back', 'Next >', 'Cancel', and 'Help'. The 'Next >' button is highlighted with a dashed border.

4. Enter the new name and company name and click **Next**.



The screenshot shows the 'iSpring Pro Activation Wizard' window at the 'Enter Registration Details' step. The title bar is the same as the previous screen. The main content area is titled 'Enter Registration Details' and includes the instruction 'These registration details will be displayed in your iSpring product'. A yellow key icon with a green checkmark is positioned to the right. Below the instruction, it says 'This product is registered to:'. There are two text input fields: 'Name:' with the value 'John Smith' and 'Company:' with the value 'iSpring'. At the bottom left, there is a checked checkbox with the text 'Attempt to activate my license online now'. At the bottom of the window, there are four buttons: '< Back', 'Next >', 'Cancel', and 'Help'. The 'Next >' button is highlighted with a dashed border.

After successful activation the new information will be displayed in the **About** window.



About



# iSpring Pro

Version 7.1.0 Build 7775

John Smith

iSpring

Business License

YYYYY-YYYYY-YYYYY-YYYYY-YYYYY-YYYYY-YYYYY-YYYYY-YYYYY-YYYYY

[Change License Key](#)

Get technical support: [support@ispringsolutions.com](mailto:support@ispringsolutions.com)

Copyright © 2005–2015 iSpring Solutions, Inc. All rights reserved.

[Additional Copyright Information](#)

Close