

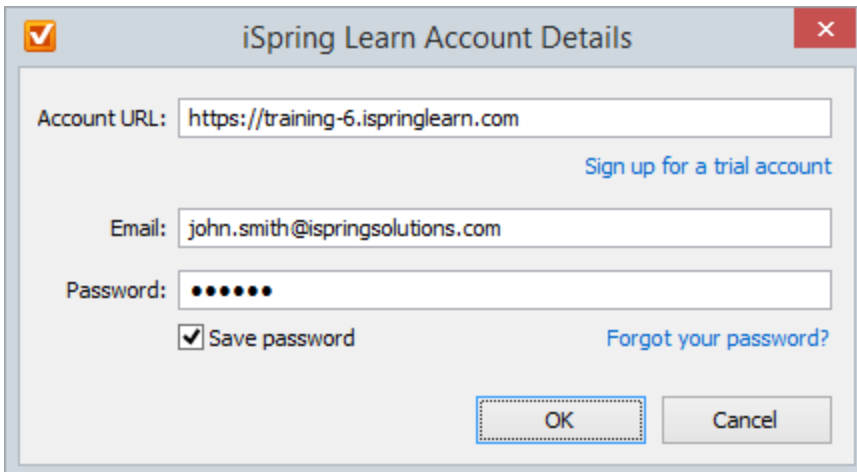
Publishing Quizzes to iSpring Learn

You can publish your quiz to iSpring Learn for public or private sharing of your content and tracking users' activities.



To upload your quiz to iSpring Learn:

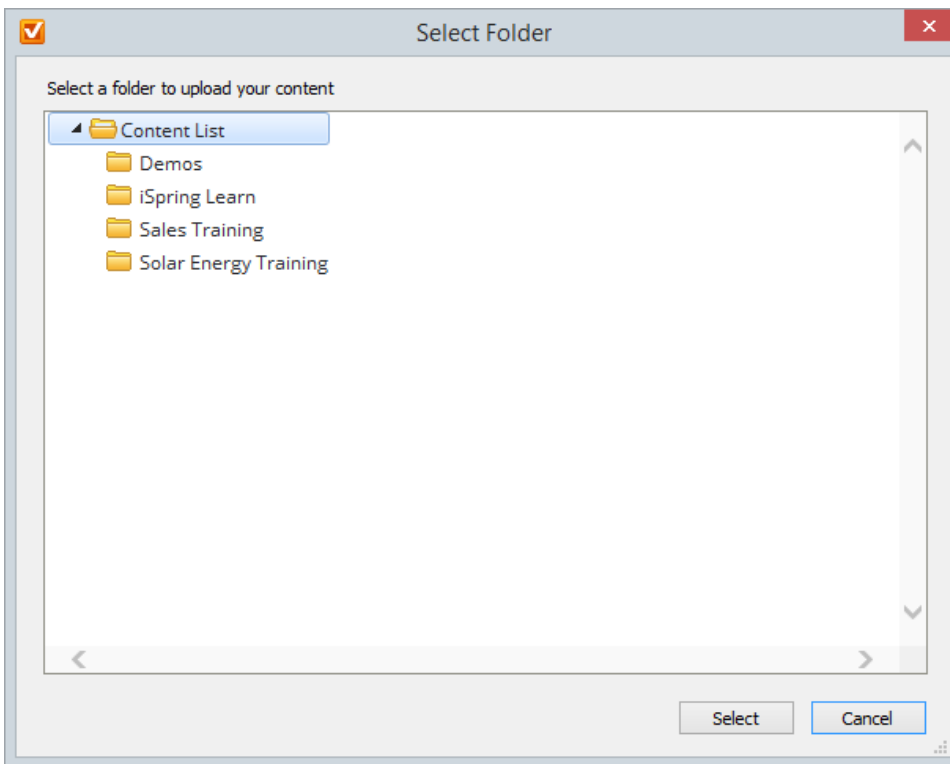
1. Click the **Change** button on the right of the **Account** field. You will see a window where you can enter your account details or sign up for a free trial.



2. When you enter your account details, iSpring validates this data, and you will see your name in the **Account** field.



3. Click **Select folder** on the right of the **Destination folder** field and select the folder to upload your content. By default, your quiz will be uploaded to the general content list.



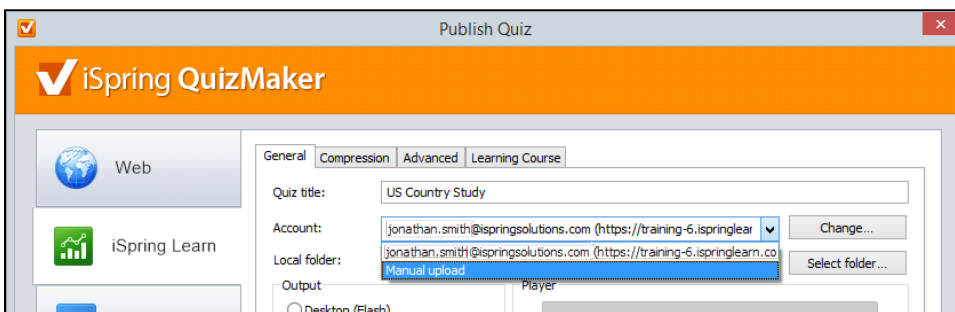
4. Check the box **Uploading source files** if you would like to upload source files to iSpring Learn.
5. Click the **Publish** button.

iSpring QuizMaker will convert your quiz to Flash and HTML5 and then upload it to your [iSpring Learn](#) account. This is a time consuming process and it may take a few minutes.

Manual Upload

If you don't have Internet connection or you use Proxy server to publish the quiz, you can upload the quiz to iSpring Learn manually:

1. Choose **Manual Upload** in the **Account** drop-down list.



2. In the **Local folder** field you can specify a local folder or network you'd like to save the quiz to.
 - a. Type in the path to the destination folder manually.
 - or
 - b. Click the **Browse** button on the right of the **Local folder** field, select the folder needed and click **OK**.
3. To publish your quiz, click the **Publish** button.
4. Once the quiz is published, the file with an *.isqmpkg extension will appear in the folder you have specified.
5. Sign in to your iSpring Learn account and upload this file via [iSpring Learn Web interface](#).