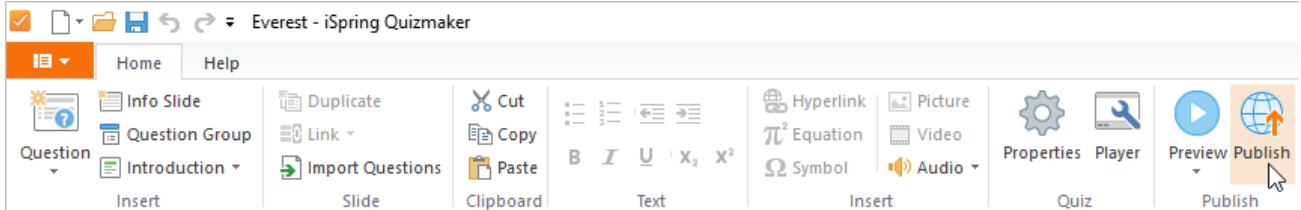


Publish from iSpring QuizMaker

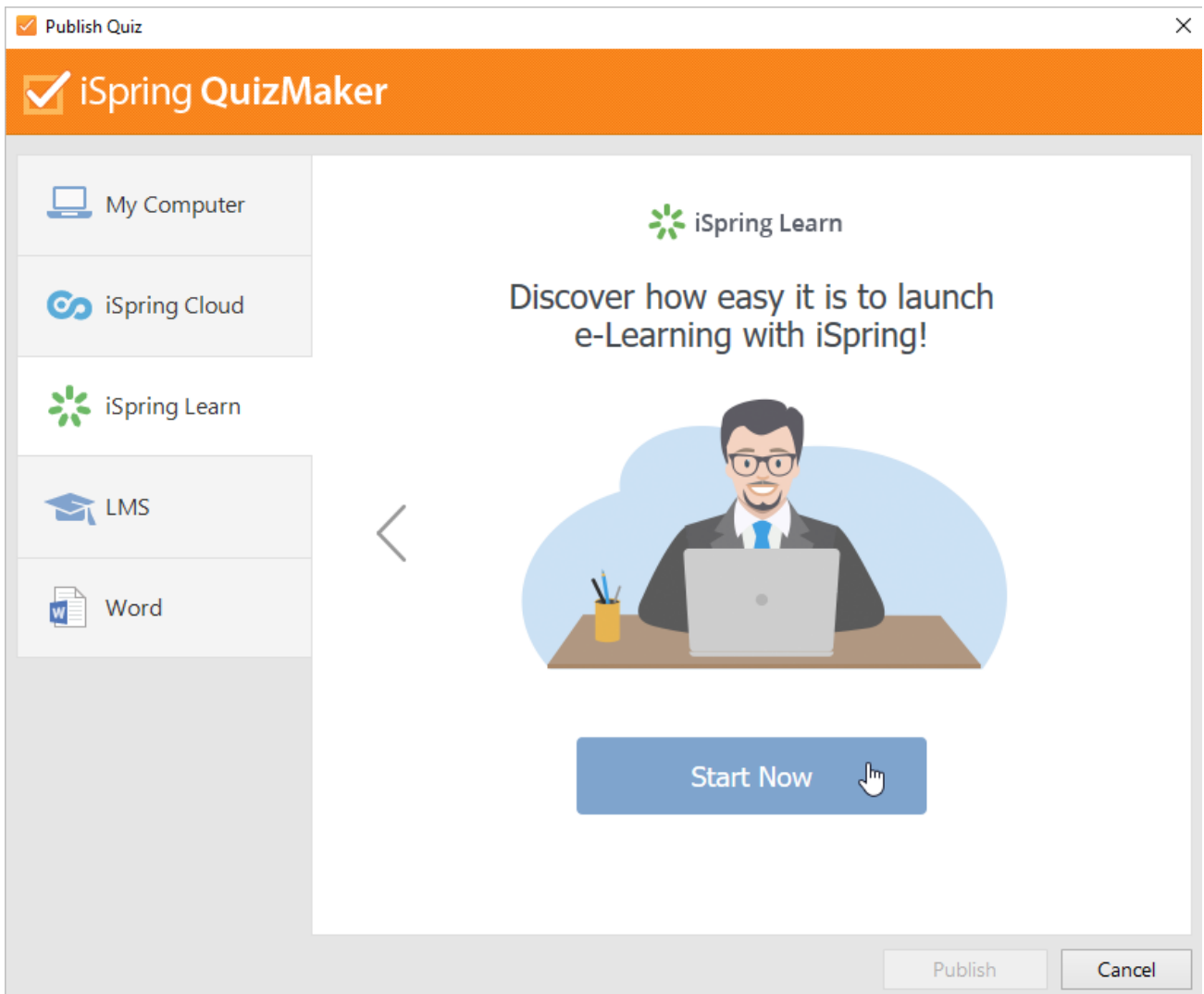
iSpring Learn is a Learning Management System with great tracking and reporting capabilities. Naturally, it is perfectly compatible with iSpring QuizMaker quizzes and surveys.

To publish your quiz directly to iSpring Learn from iSpring QuizMaker:

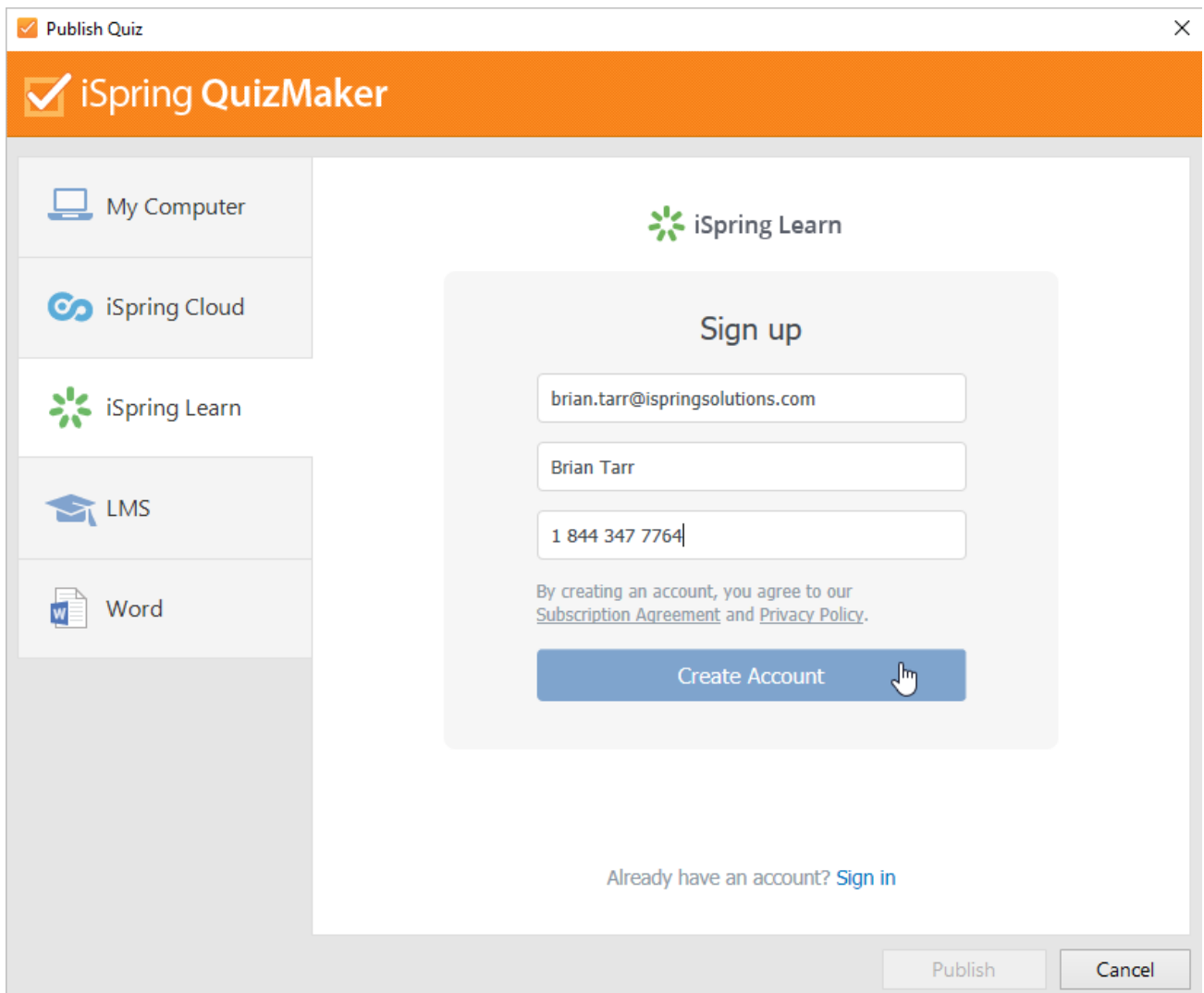
1. First, click **Publish** on the toolbar.



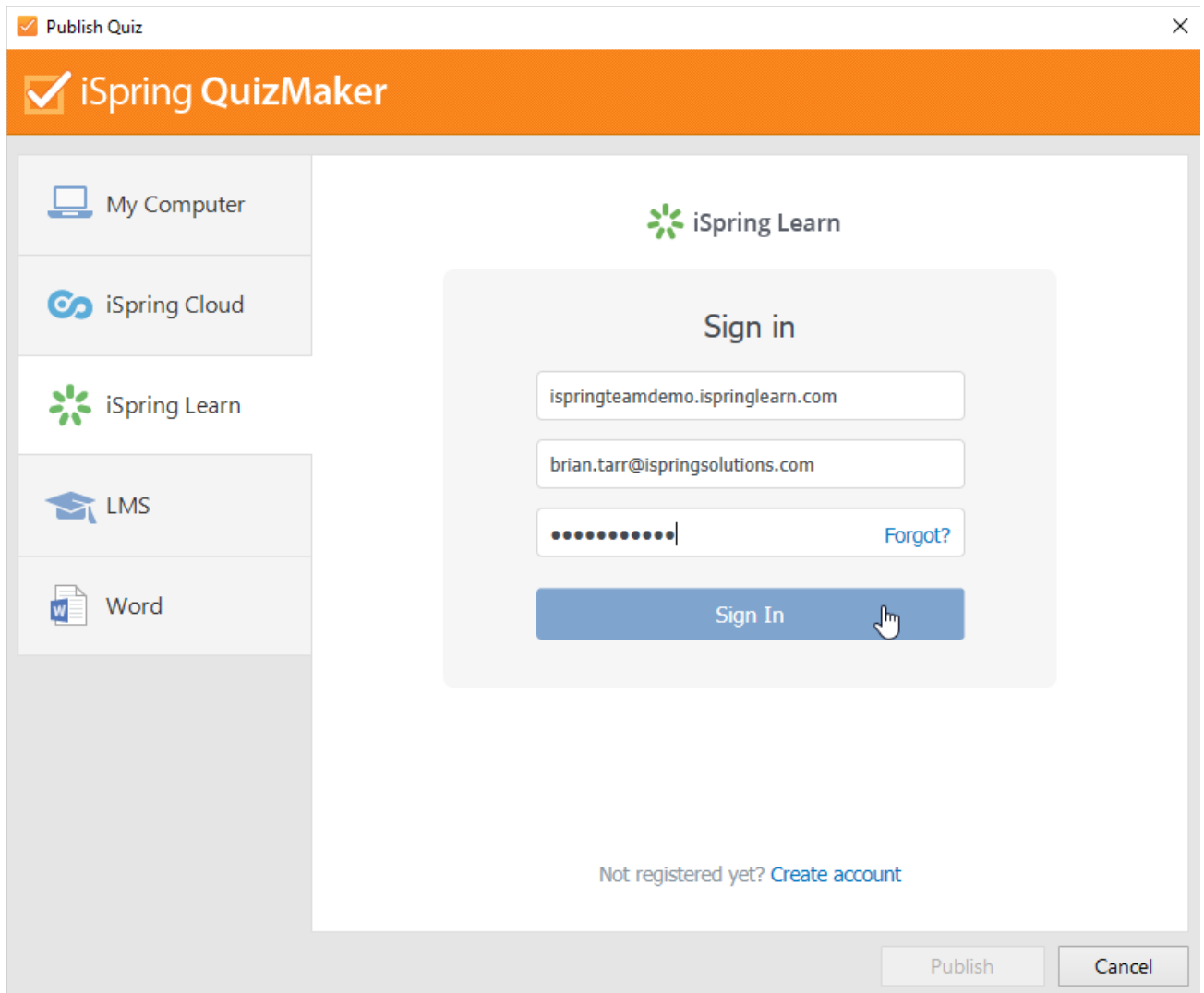
2. Second, in the **Publish Quiz** window, choose the **iSpring Learn** tab. Click through the picture gallery and then click **Start Now**.



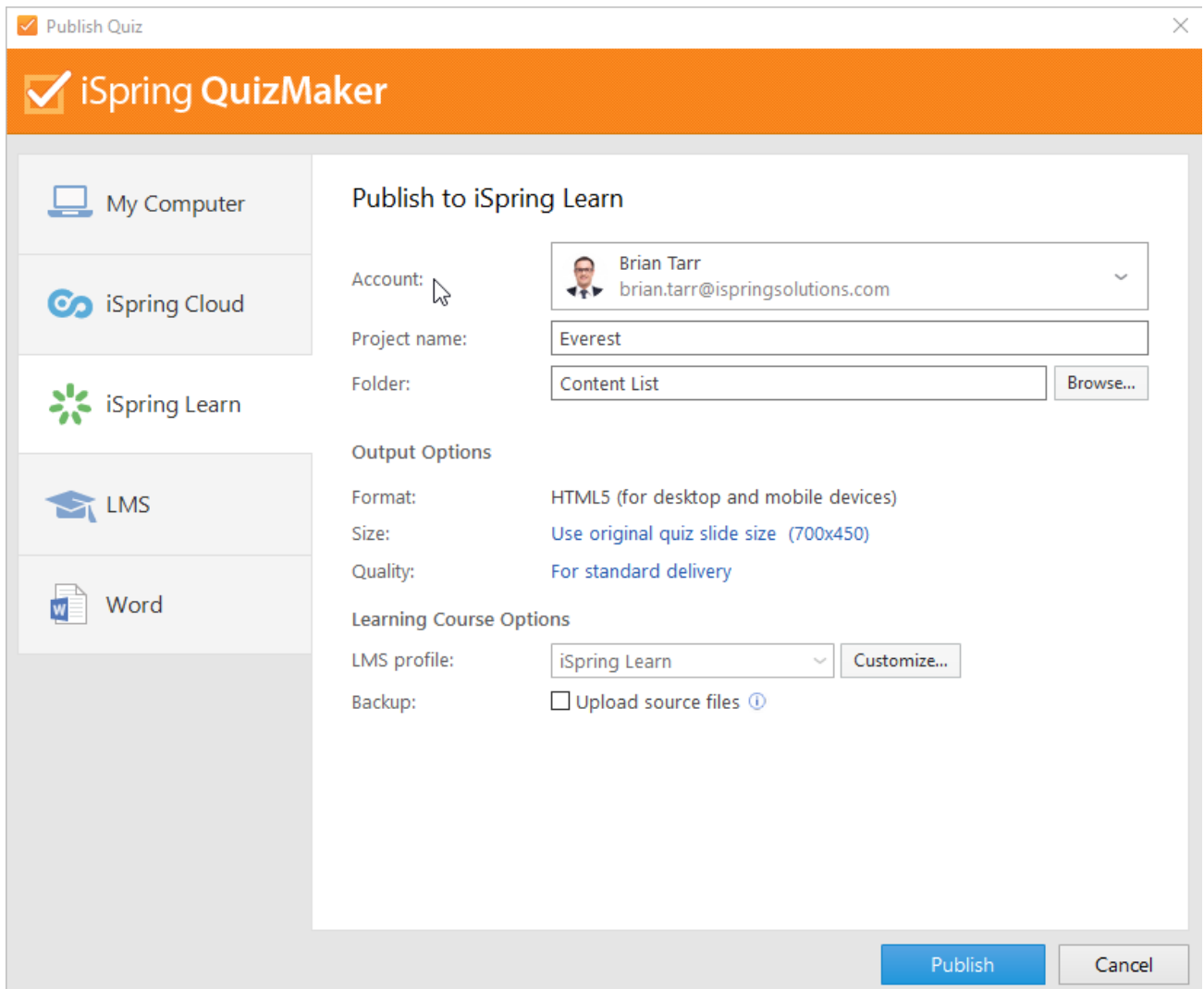
3. Next, sign up for a free trial account. Enter your email, name and phone number and click **Create Account**.



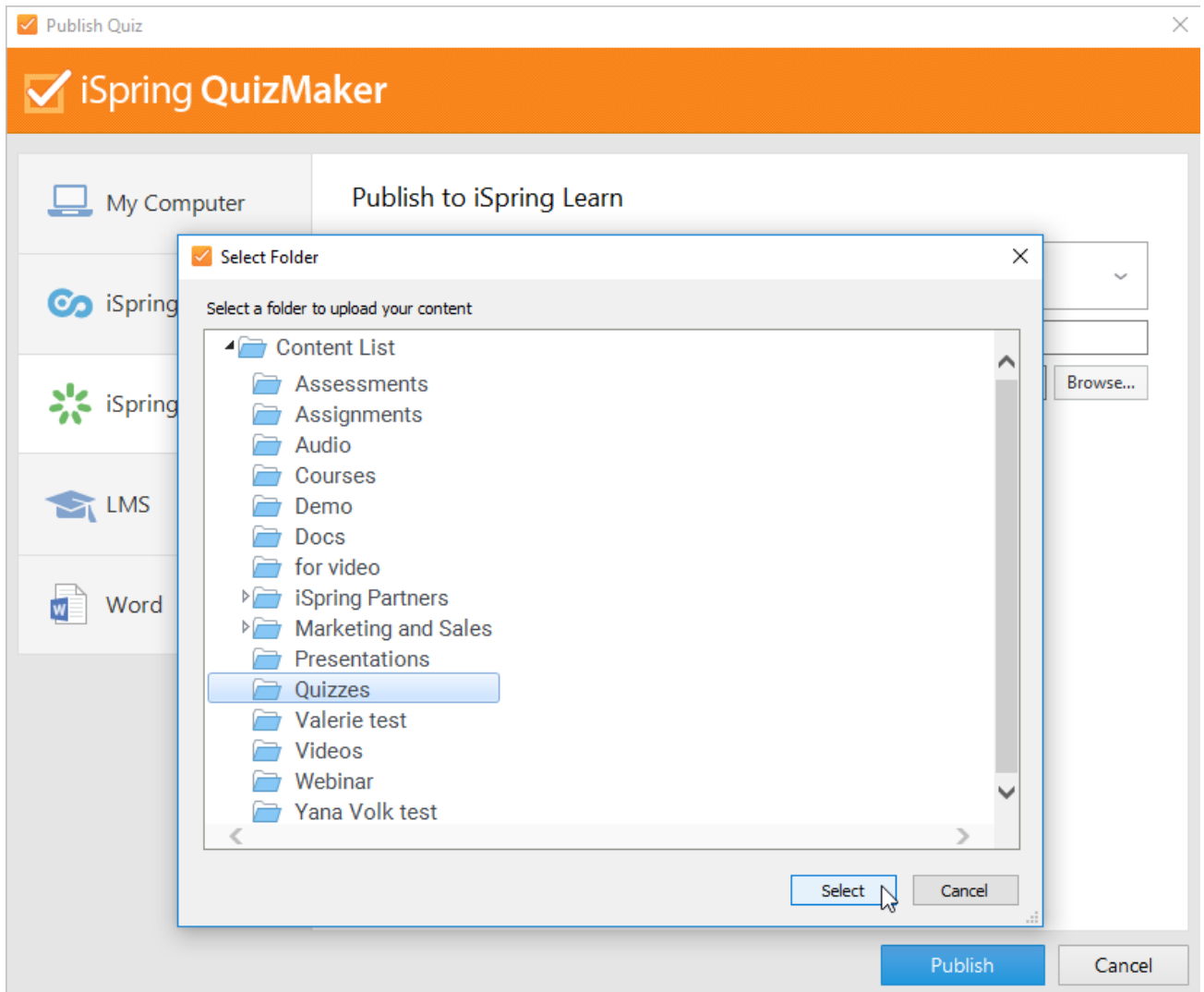
4. If you already have an account, click the **Sign In** link at the bottom, and enter your existing iSpring Learn account details (account URL, email, and password).



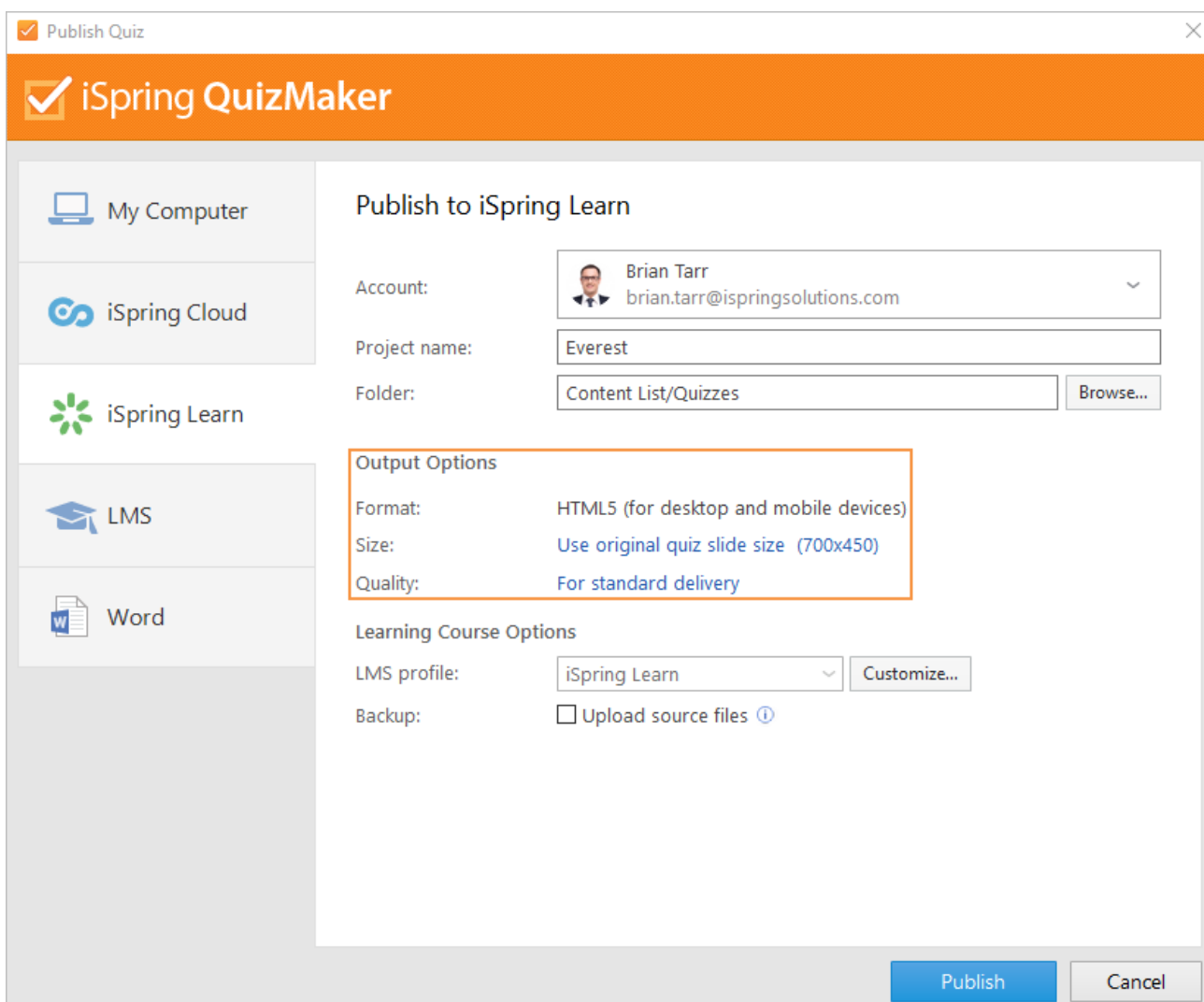
5. When you enter your account details, iSpring validates this data, and you will see your email address in the **Account** field.



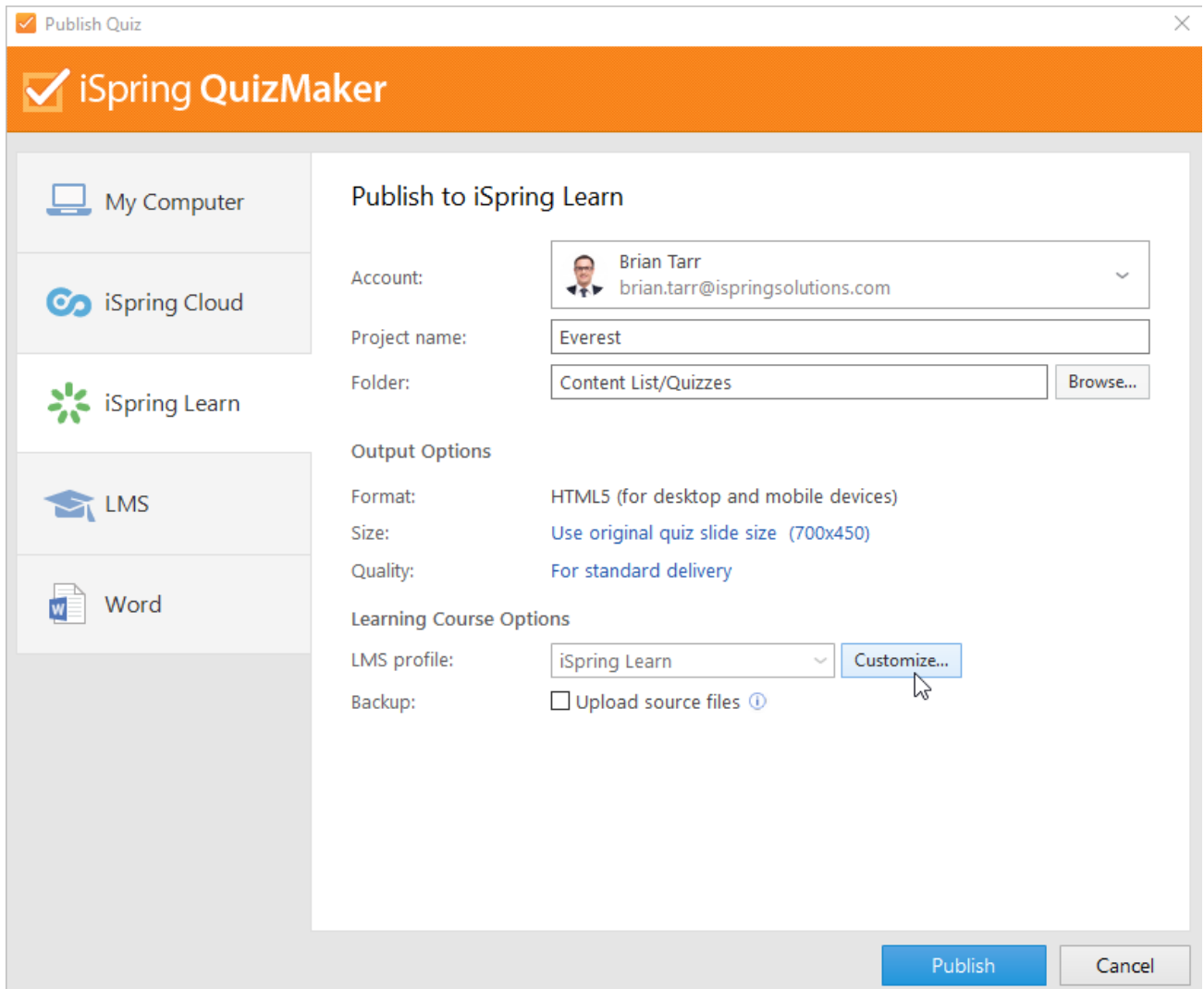
6. Next, click **Browse...** and select the destination folder. By default, your quiz will be uploaded to the general content list.



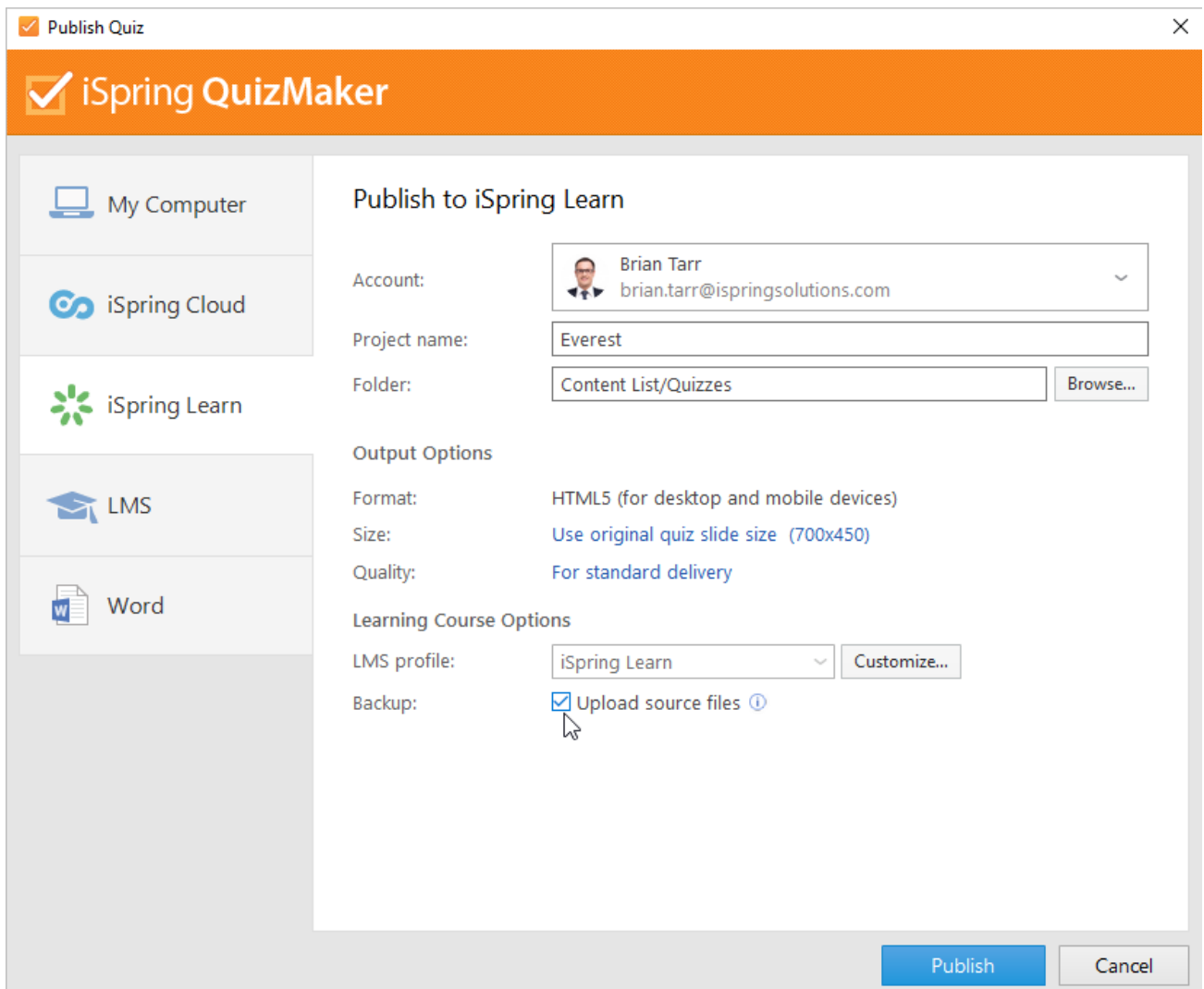
7. Then, set up output options:
- specify how the quiz behaves in a browser,
 - select the quality level of images, audio and video files.



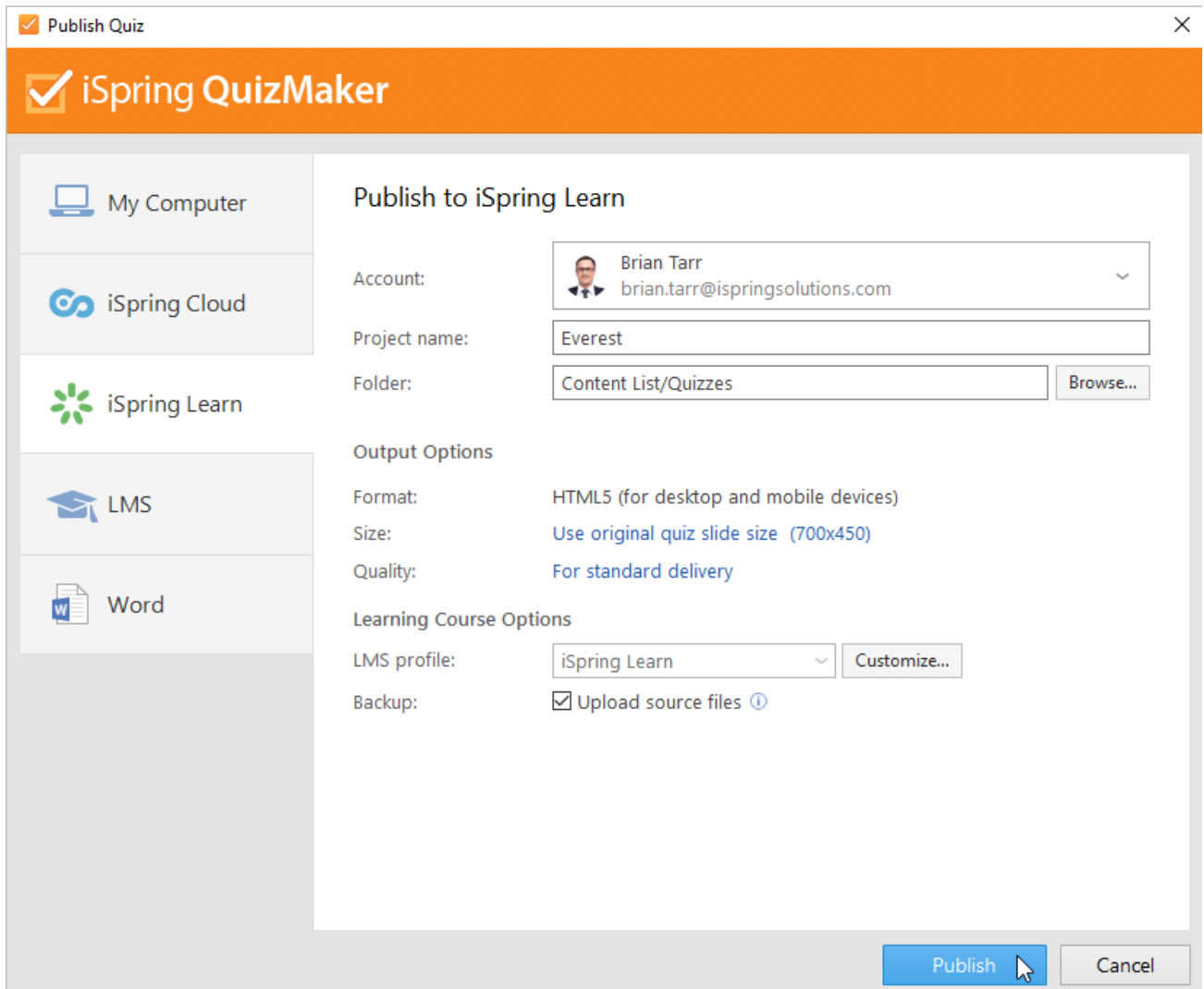
8. In the **LMS profile** field, click **Customize** if you want to specify additional quiz information like quiz author, description, etc.



9. Next to Backup, check **Upload source files** if you would like to upload your quiz project file to iSpring Learn.

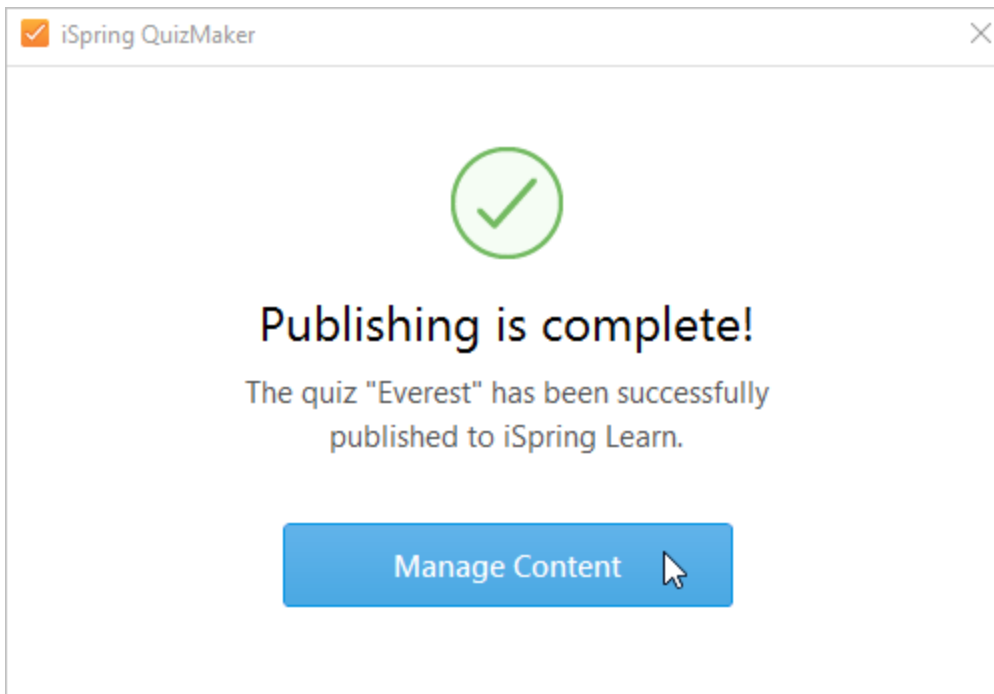


10. Finally, click the **Publish** button.

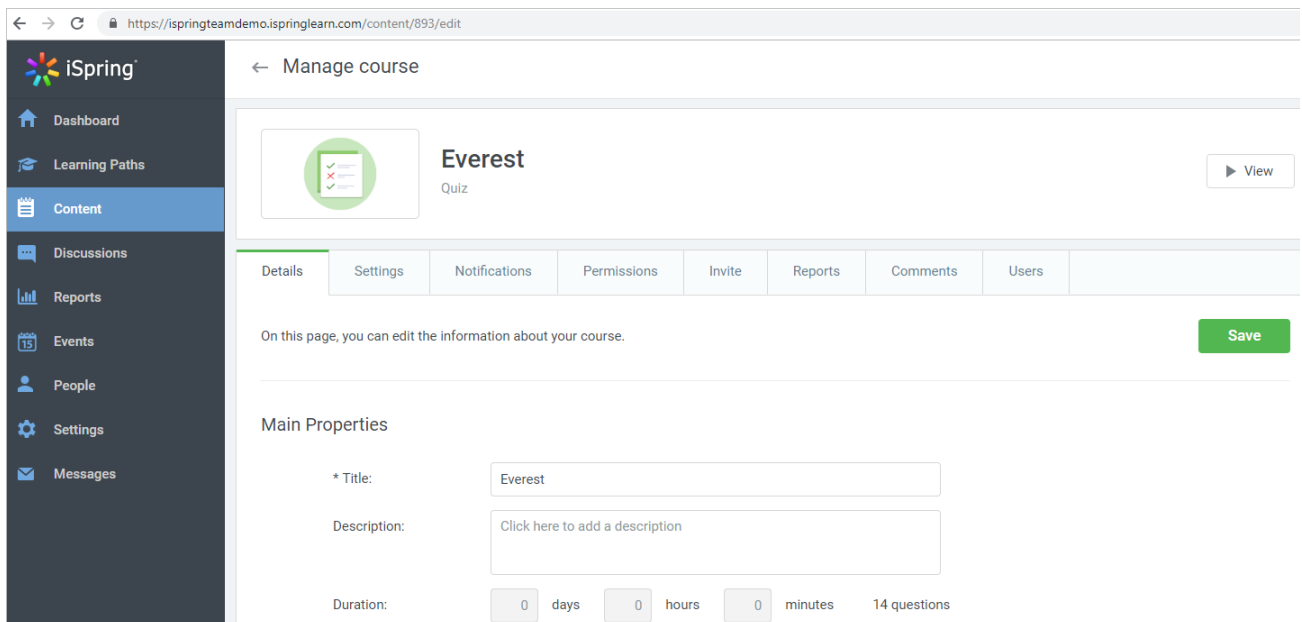


11. iSpring QuizMaker will convert your quiz to online format, and it will be available for viewing on any device from a computer to a smartphone. The program will upload your quiz and it will appear in your iSpring Learn account.

When the publishing process is successfully completed, a new window will open. To view the published quiz in the iSpring Learn interface, click **Manage Content**.



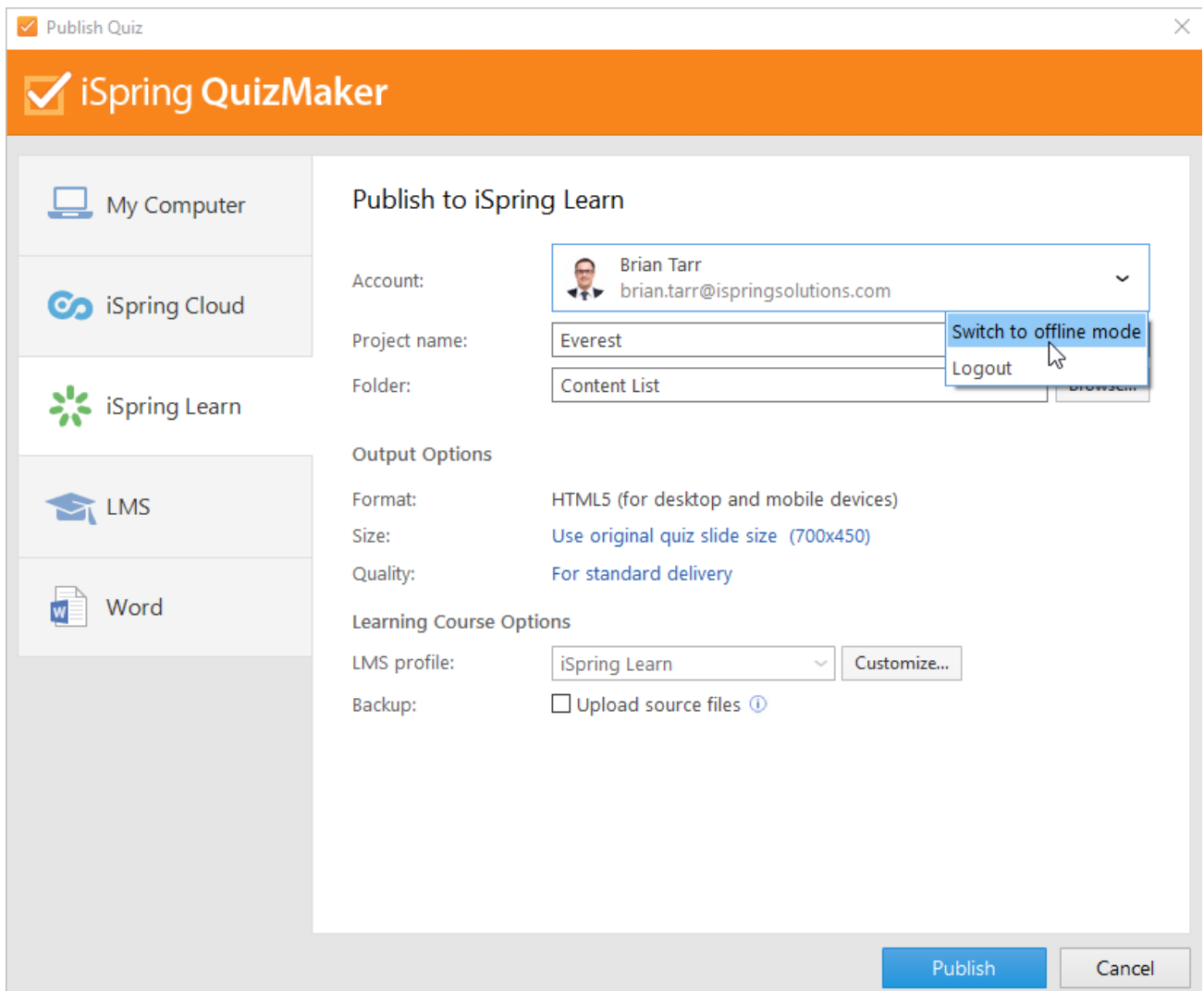
You will see the presentation uploaded to your iSpring Learn account. From there, you can fully manage the course settings and assign it to users.



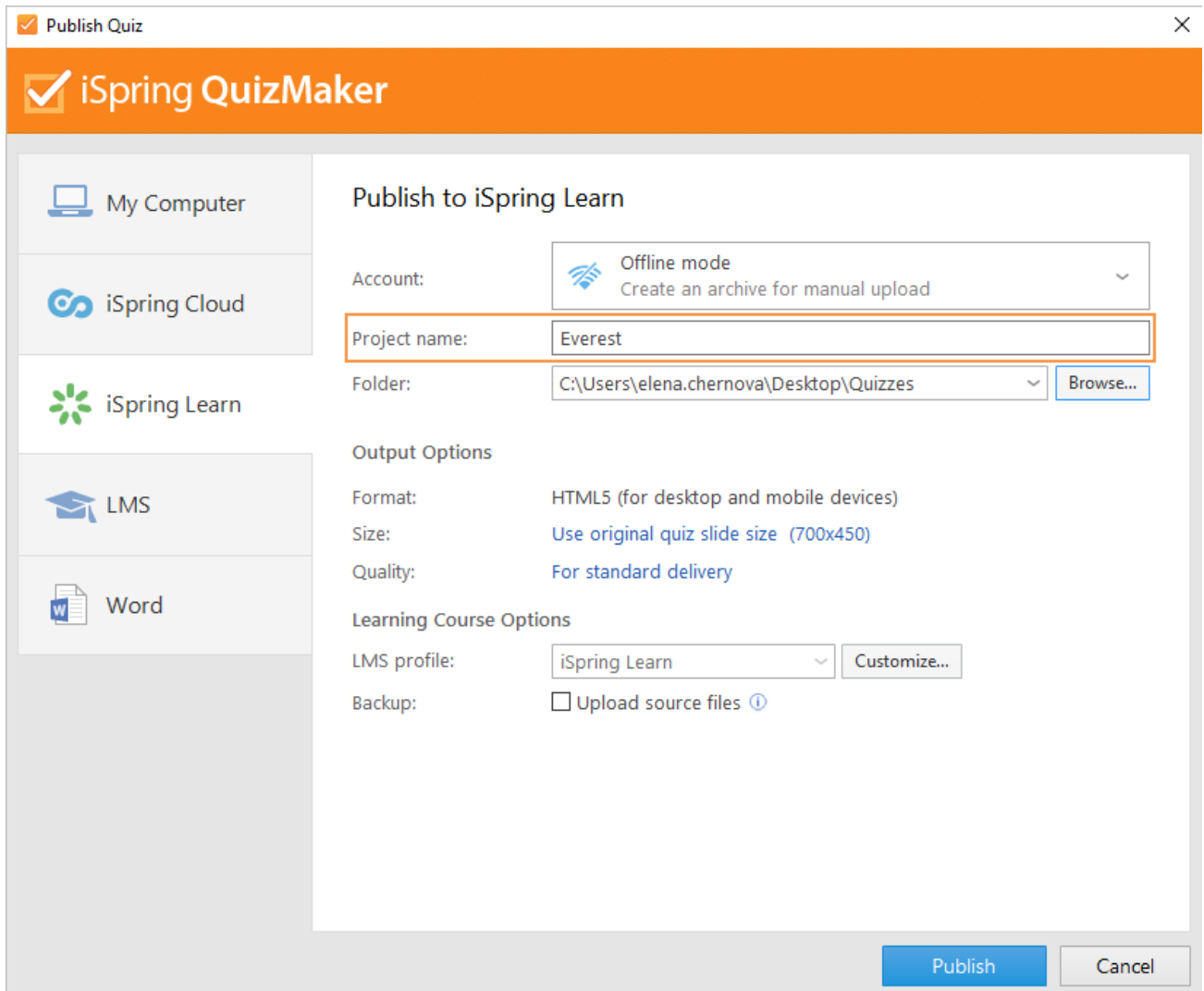
Manual Upload to iSpring Learn LMS

If you don't have an Internet connection or are using a proxy server, you can create a quiz archive which is ready for manual uploading via the [iSpring Learn Web Interface](#). Here's how to do it.

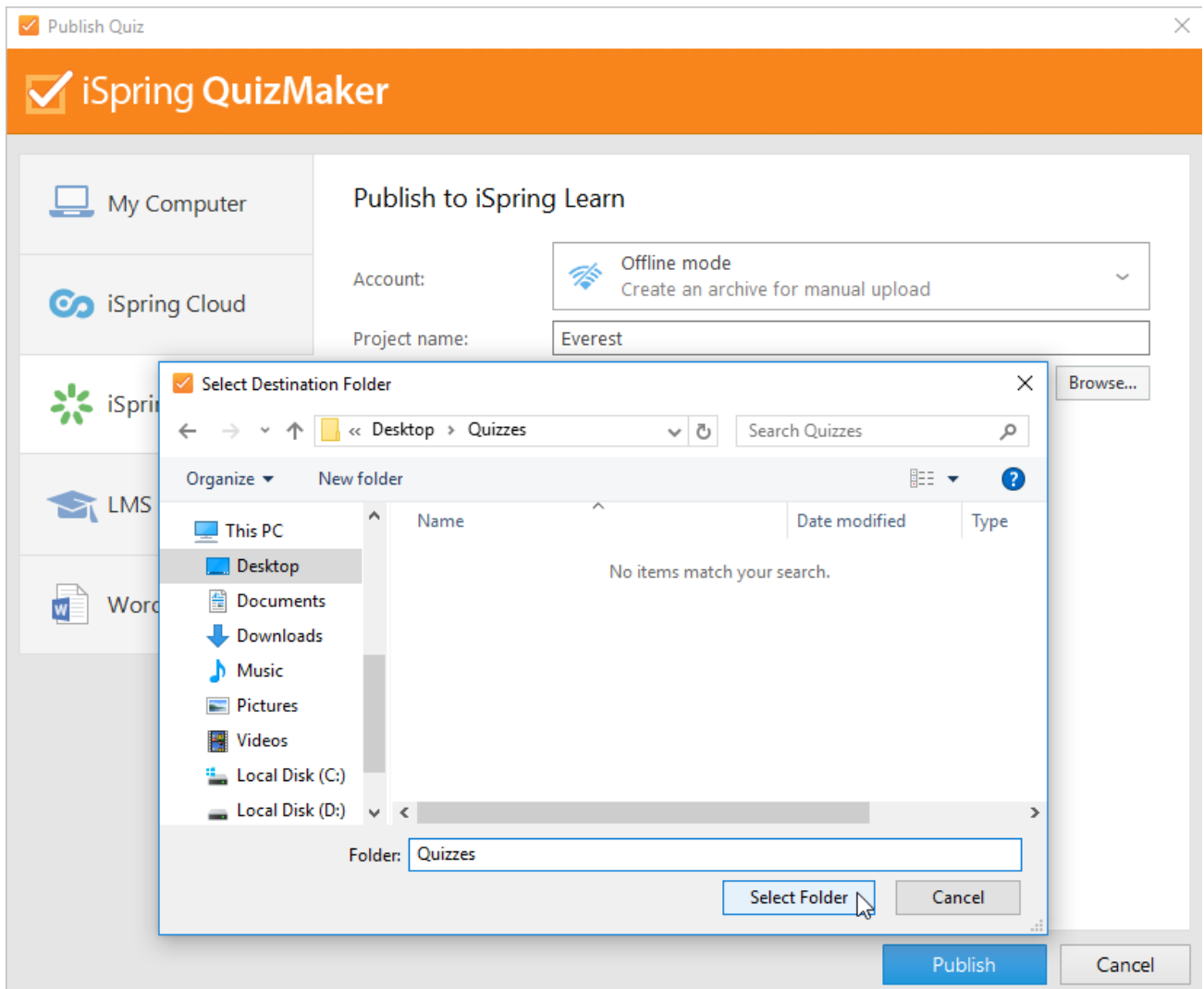
1. Open the **Account** menu and choose **Switch to offline mode**.



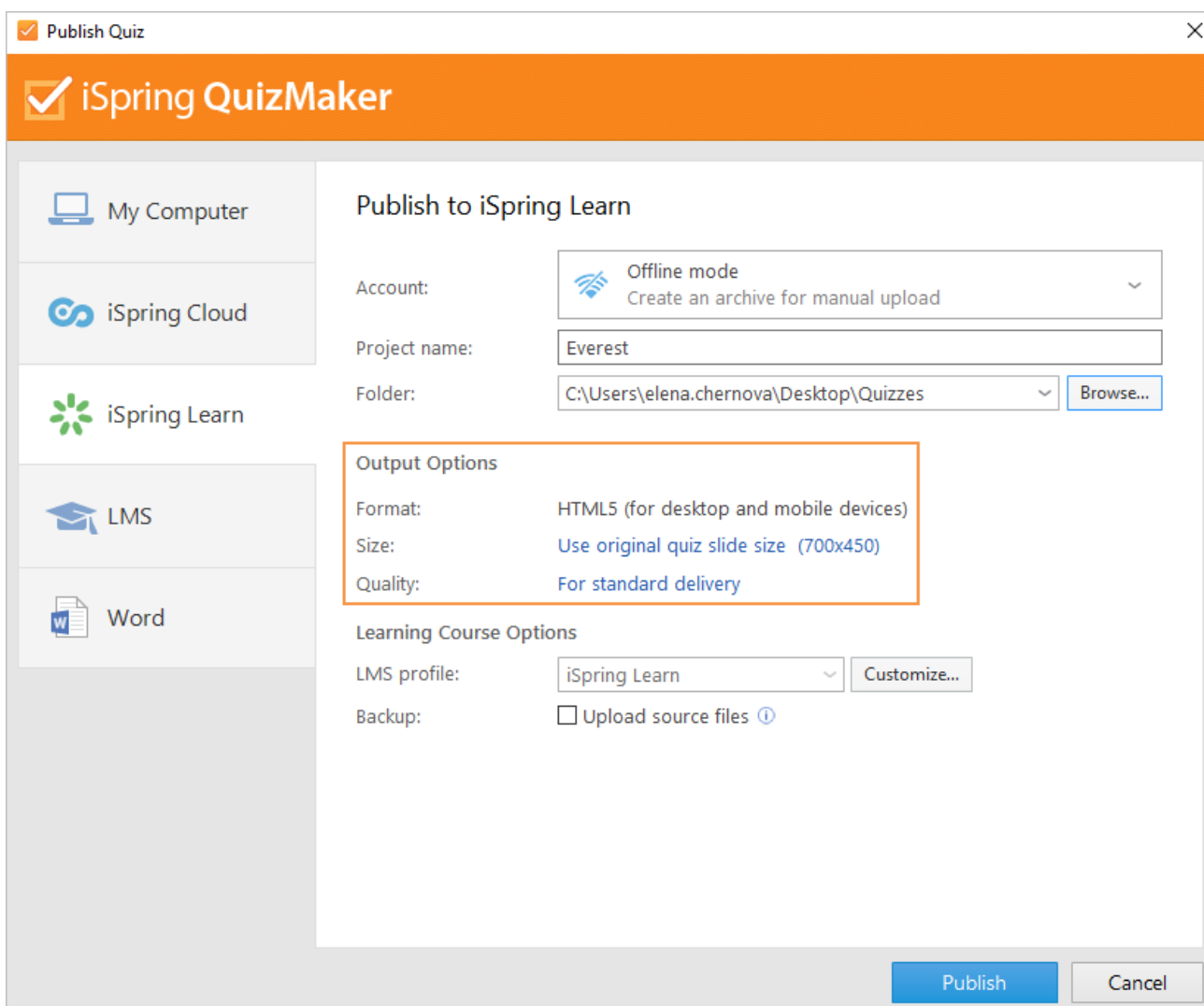
2. Enter your quiz title in the **Project name** field.



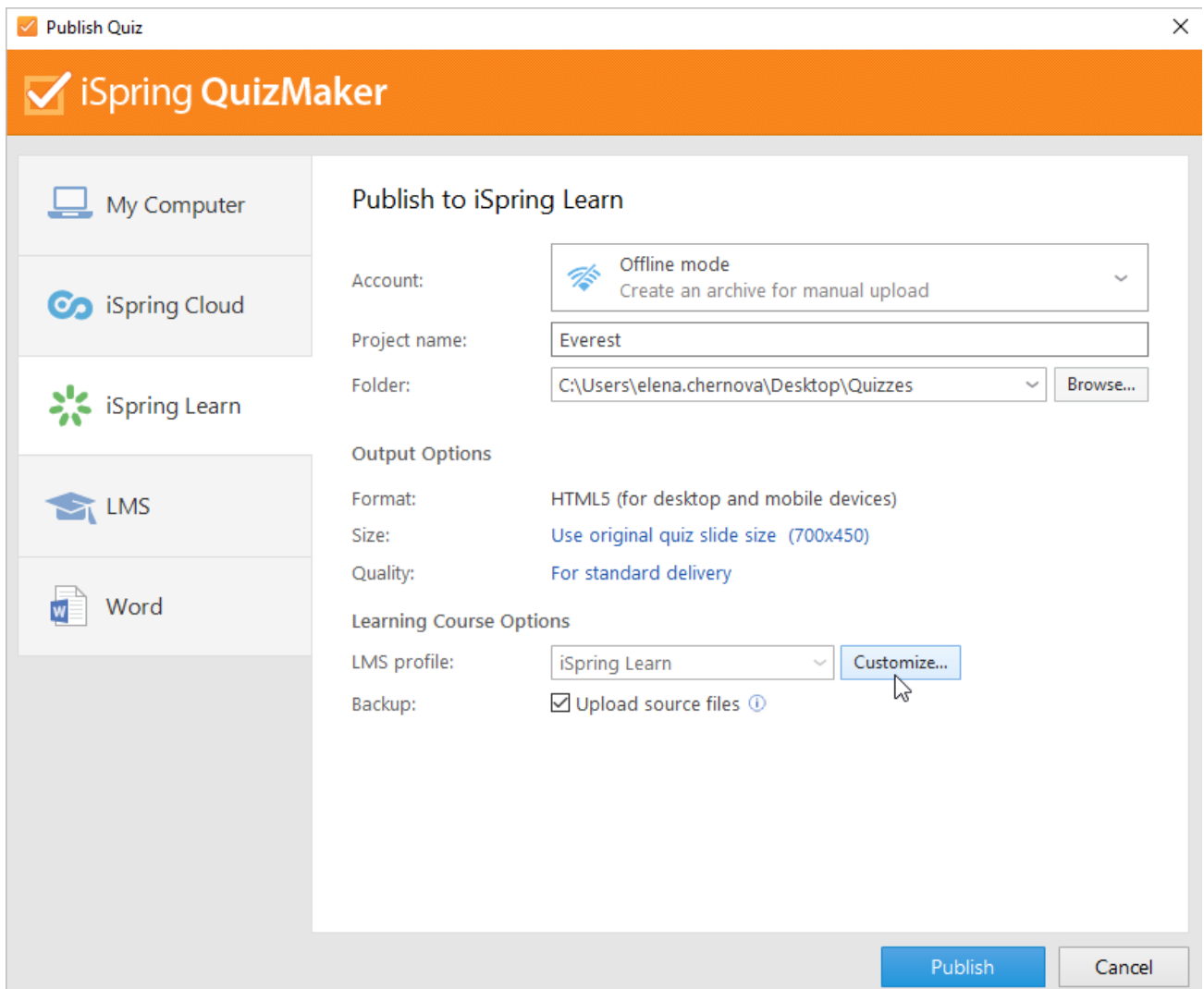
- Then, select a destination folder on your computer for the output quiz. You can click the **Browse** button on the right of the **Folder** field, navigate to the destination folder, select it, and click **Select Folder**. Or just type the path to the destination folder manually.



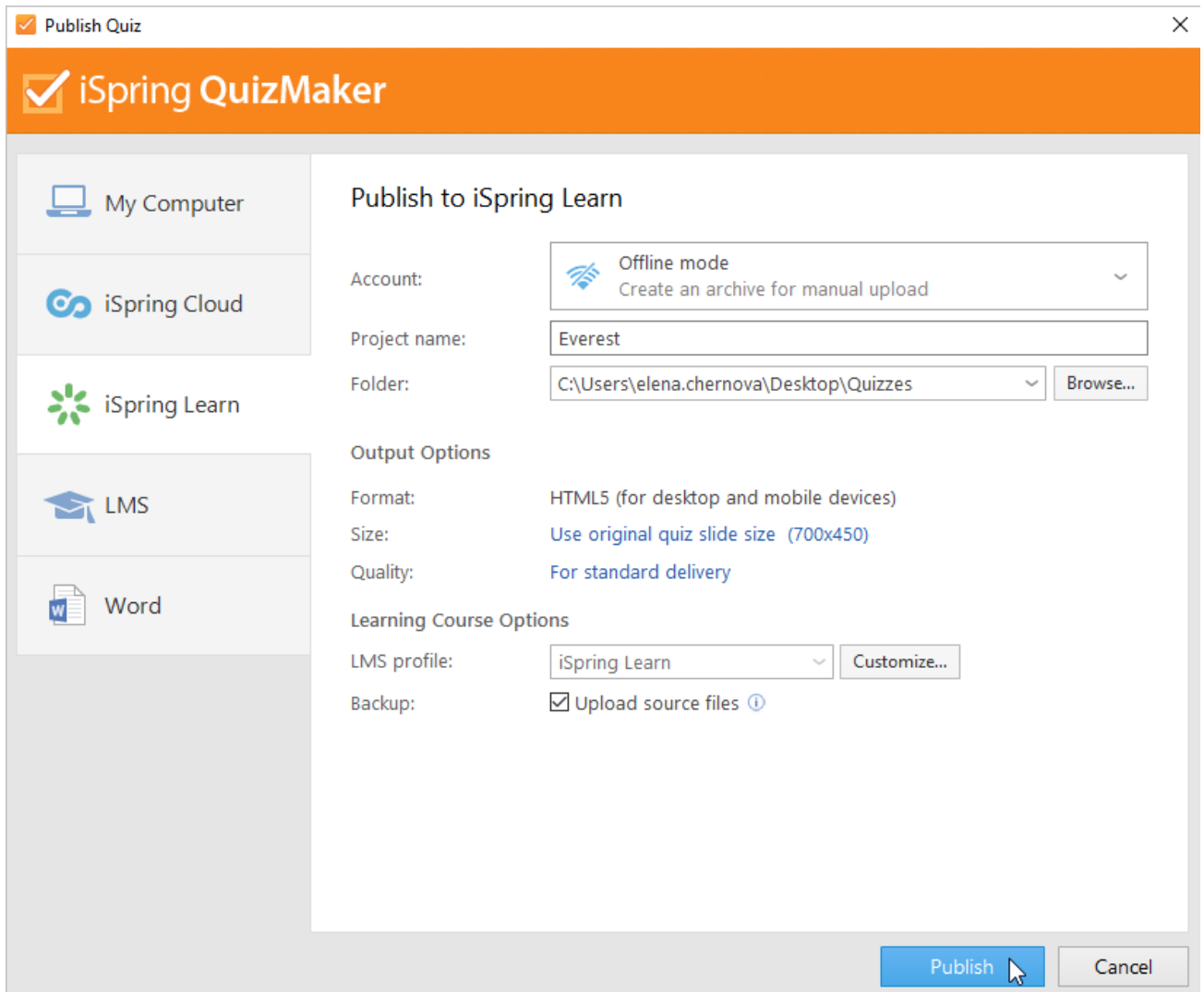
4. Then, set up output options:
- specify how the quiz behaves in a browser,
 - select the quality level of images, audio and video files.



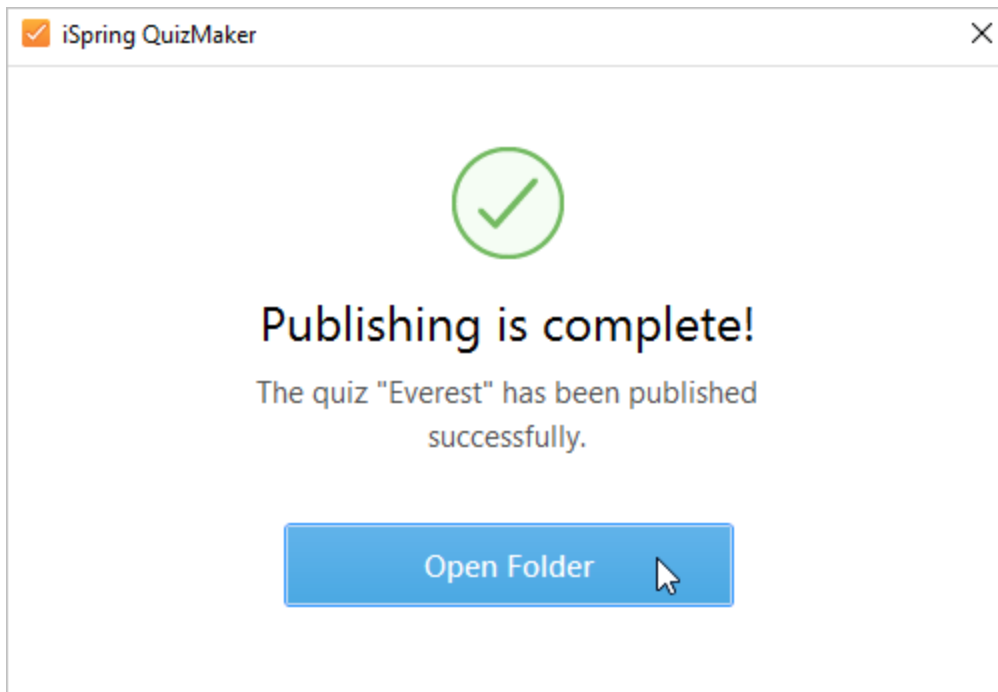
5. In the **LMS profile** field, click **Customize** if you want to specify additional quiz information like quiz author, description, etc.



6. Finally, click the **Publish** button.



7. Once published, click **Open Folder**.



iSpring QuizMaker creates a package with all the quiz files which is ready for uploading to iSpring Learn. You can log in to your iSpring Learn account at any time and upload this package. Check out the instructions on [how to upload content to iSpring Learn via the web interface](#).

