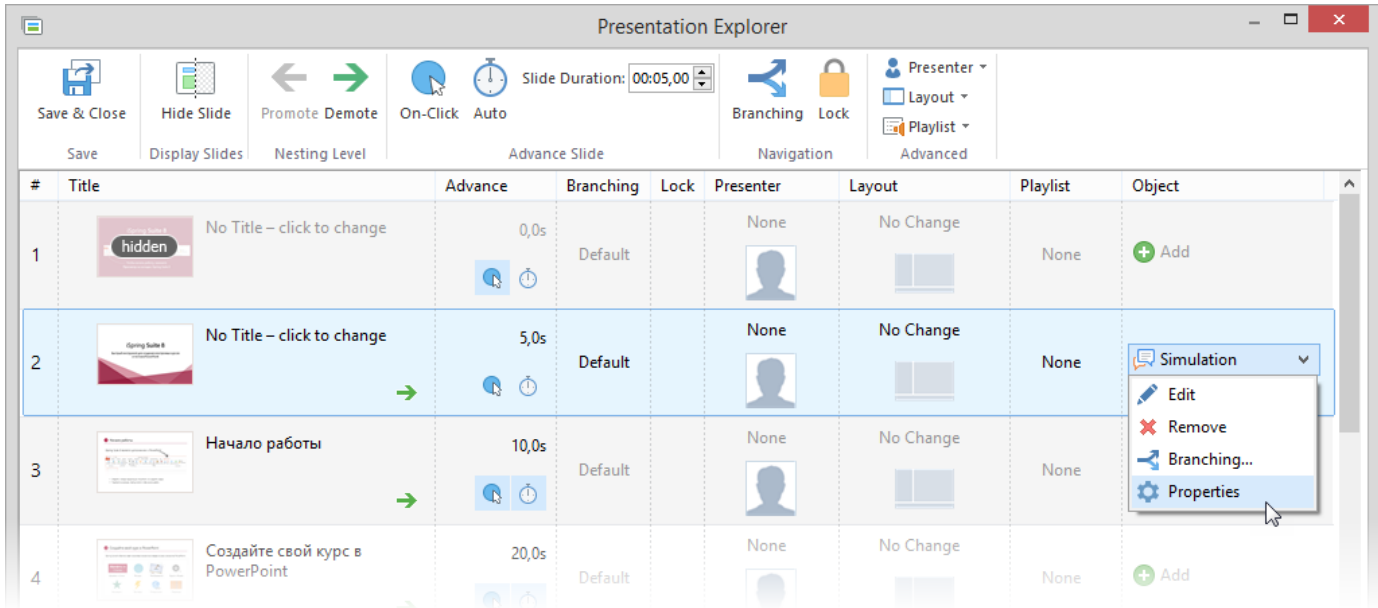


Simulation Properties

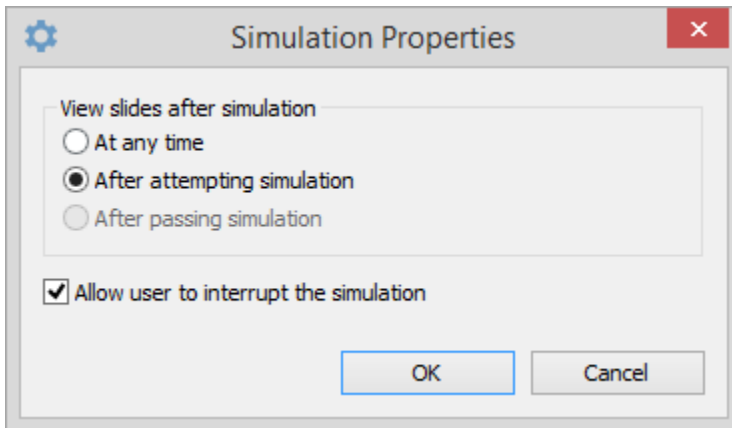
If you added a simulation to your course, the **Add** plus icons will be replaced with the **Simulation** menu. In the **Simulation Properties** window, you can allow or prevent users from viewing presentation's content after the slide with a simulation.

To edit simulation properties:

1. Click the **Simulation** button in the Object column
2. Select the **Properties** option in the drop-down menu



In the **Simulation Properties** window you can specify when a user will be able to view slides after the simulation.



Simulation properties	
View slides after simulation	Specify when users are allowed to view slides after the simulation: <ul style="list-style-type: none"> • At any time • After attempting the simulation • After passing the simulation
Allow user to interrupt the simulation	If this checkbox is selected, the user will be able leave the simulation and proceed to another slide.

