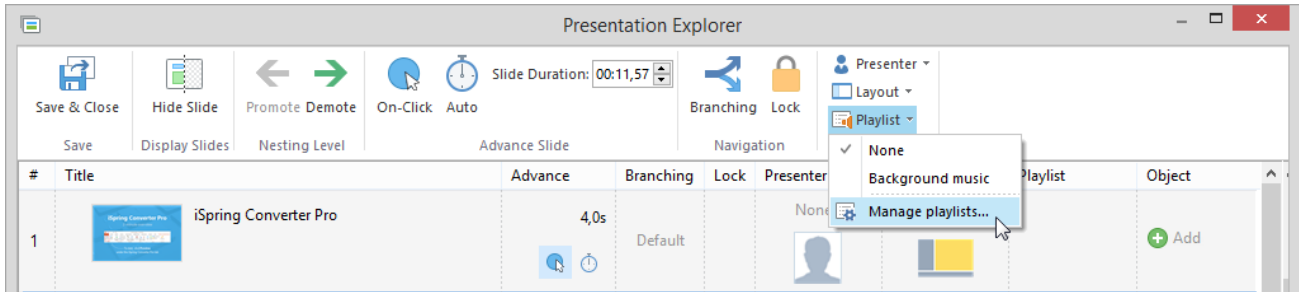


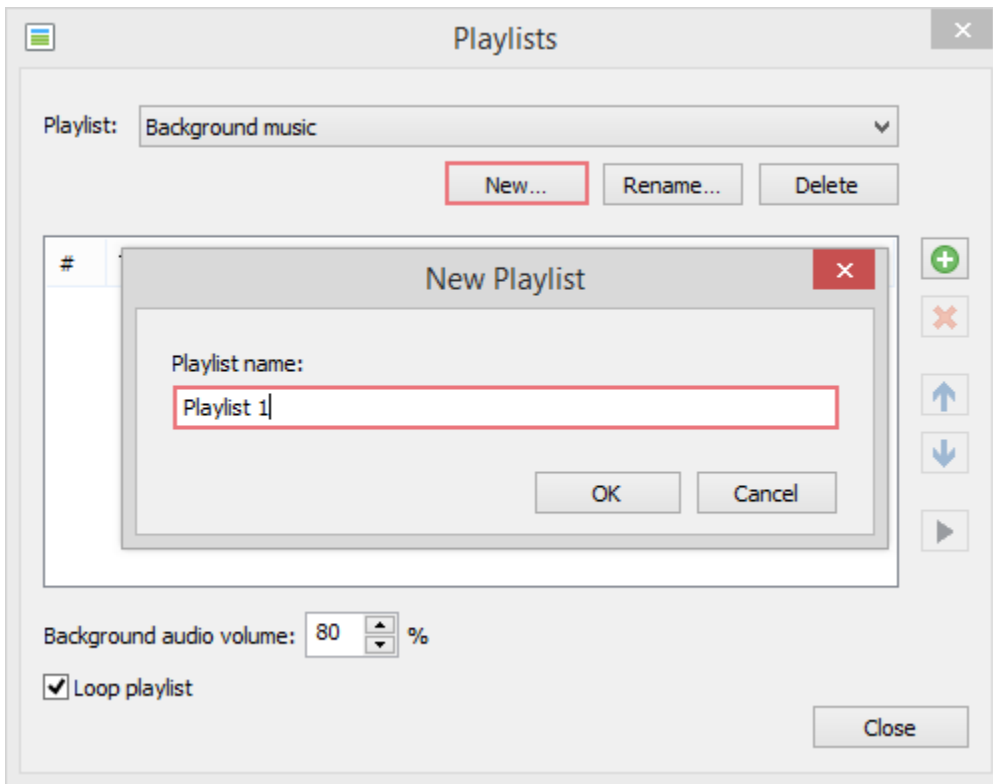
Working with the Playlists

You can create audio playlists and apply playlist to any presentation slide using the enhanced Presentation Explorer interface.

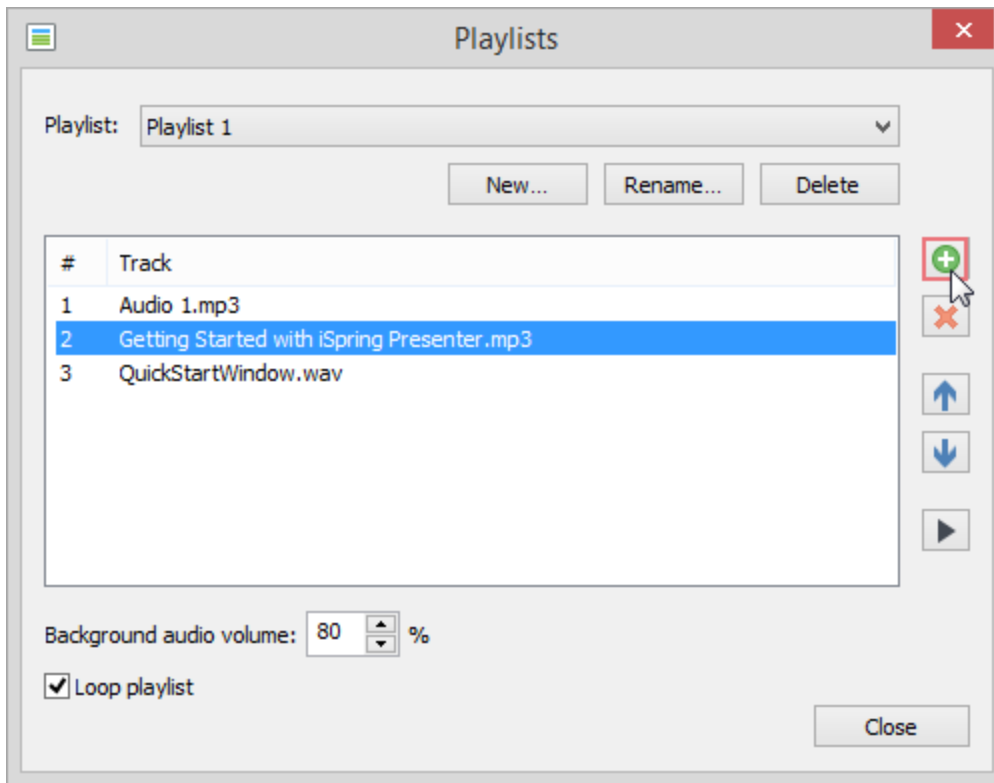
1. To create a new playlist, click **Manage Playlists** in the Playlist menu. The new Playlists window will open up.



2. In the Playlists window, click **New** and type in the name of a new playlist. Click **OK**.

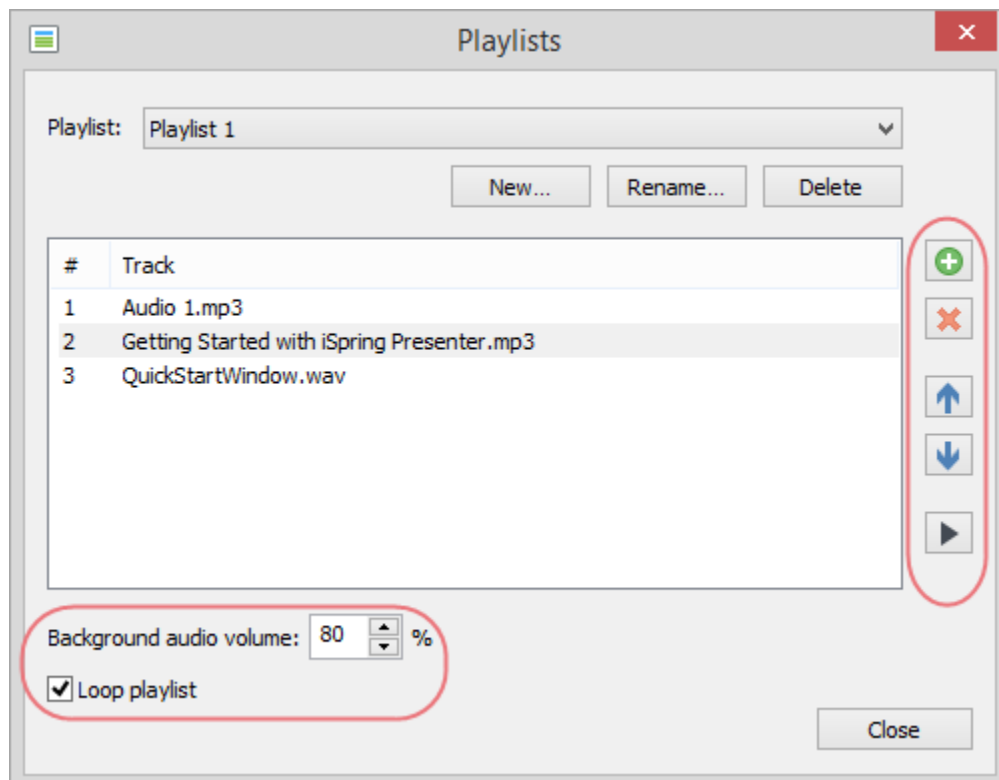


3. Then, you can add tracks to your playlist. Just click the **Plus** icons on the right and navigate to the audio files on your computer that you want to add to your playlist. You can add **.wav**, **.mp3**, and **.wma** audio files.



4. Once you added some audio files, you can manage your playlist by clicking the icons on the right from the files list.

- Move the selected tracks up and down, listen to the tracks and delete unnecessary tracks from the list.
- Adjust the audio volume to the comfortable level in the **Background audio volume** field.
- Select the checkbox **Loop playlist** if you want to repeat playback of the selected playlist. Click **Close** when you finish setting playlist preferences.



Now, if you want to apply a playlist to a slide, select the slide and choose a playlist for it. You can select multiple slides and share one playlist with all of them.

The screenshot shows the 'Presentation Explorer' window with a table of slides. A context menu is open over the 'Background music' column, showing 'None', 'Playlist 1', and 'Manage...'. Two red callout boxes provide instructions: one points to slide 4 with the text 'Select a slide or multiple slides in the list', and the other points to the 'Playlist 1' option in the menu with the text 'Choose a playlist from the Playlists menu'.

#	Title	Advance	Branching	Background music	Layout	Playlist	Object
3	Getting Started	10,0s	Default	None	No Sidebar	None	+ Add
4	Create Your Course in Power	20,0s	Default	None		None	+ Add
5	Set Up Presentation Structure	13,0s	Default	None	No Change	None	+ Add
6	Add Audio Narration	10,0s	Default	None	No Change	None	+ Add