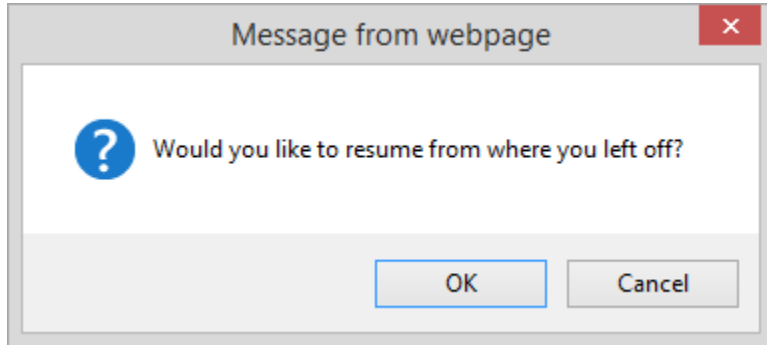


Resuming Playback

Resume playback feature allows users to pick up right where they left off.

If users re-opens content that they have already viewed, the system will automatically suggest opening it from the slide where a user left off last time.



This option works for the followings content categories:

- Presentations,
- Presentations with Quizzes,
- Audio (MP3),
- Video (FLV).

If a user resumes playback, embedded audio and video will be played from the moment when a user closed the content window last time. Presentation playback starts from the last viewed slide.

You can control the resume option when you upload your presentation or presentation with a quiz to iSpring Learn. For more information, please check the [Playback and Navigation](#) article.