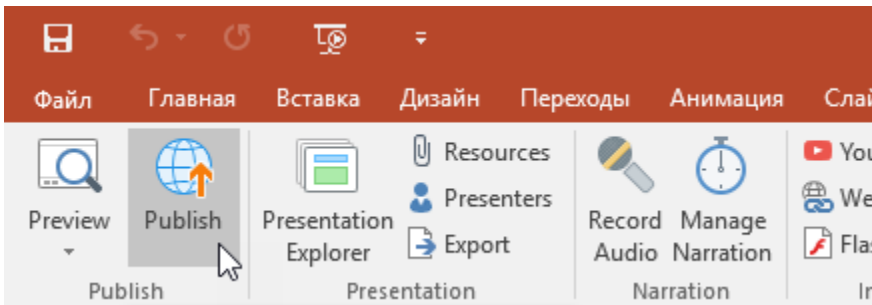


Publish from iSpring Converter Pro

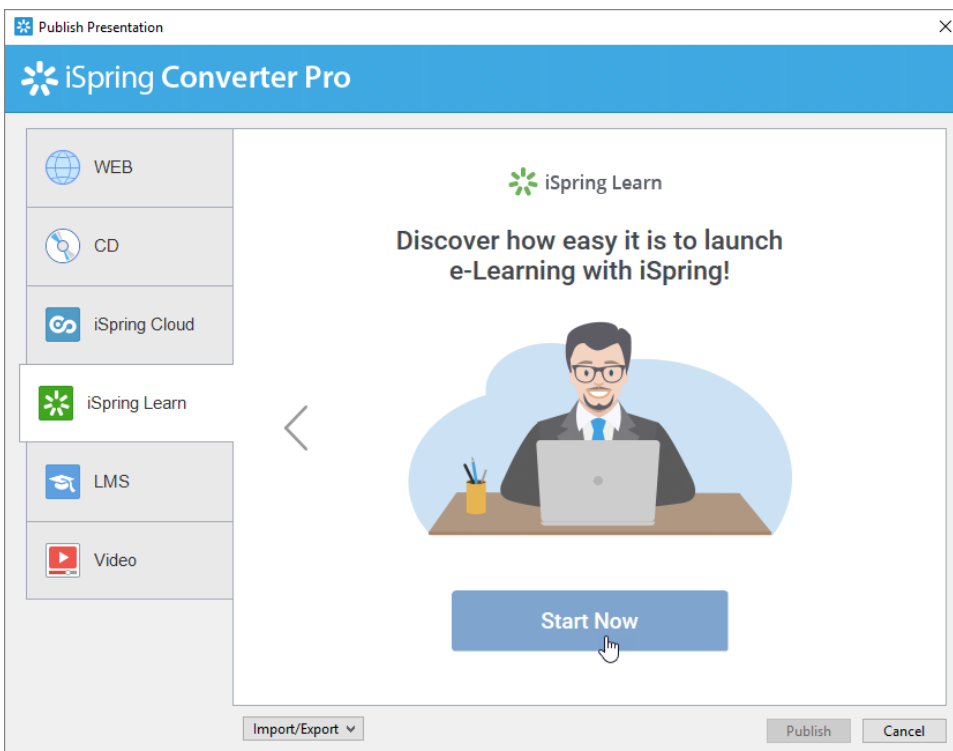
iSpring Learn is an easy-to-use cloud-based Learning Management System for training and assessing employees or students online.

To publish your presentation to iSpring Learn:

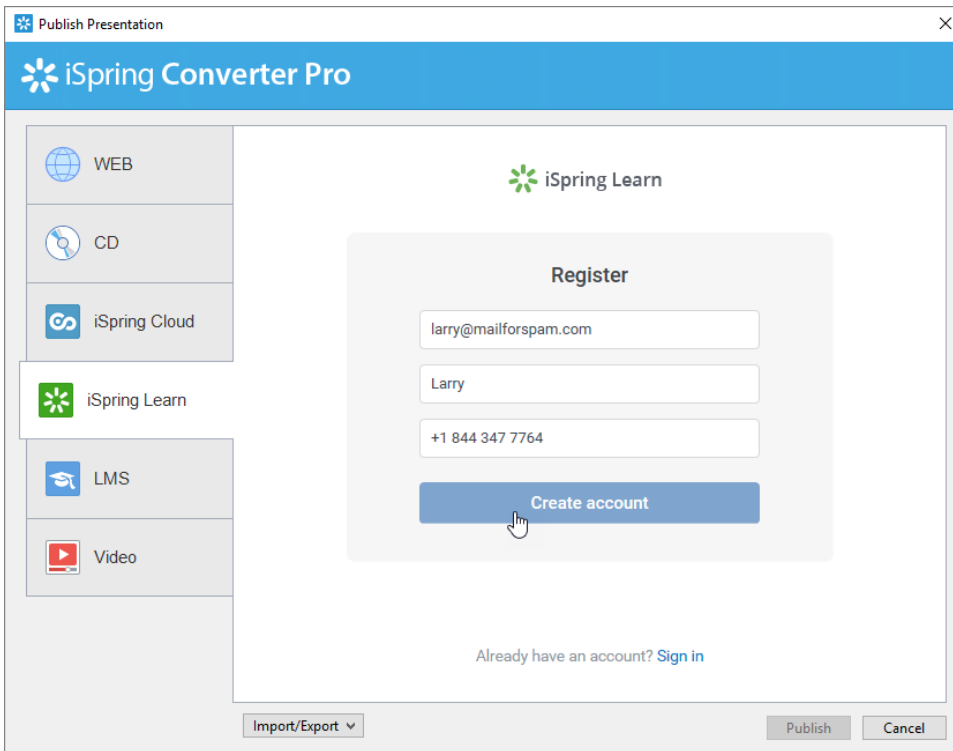
1. Click **Publish** on the toolbar in the iSpring Converter Pro tab



2. Choose the iSpring Learn tab. Look through the picture gallery and click **Start Now**.

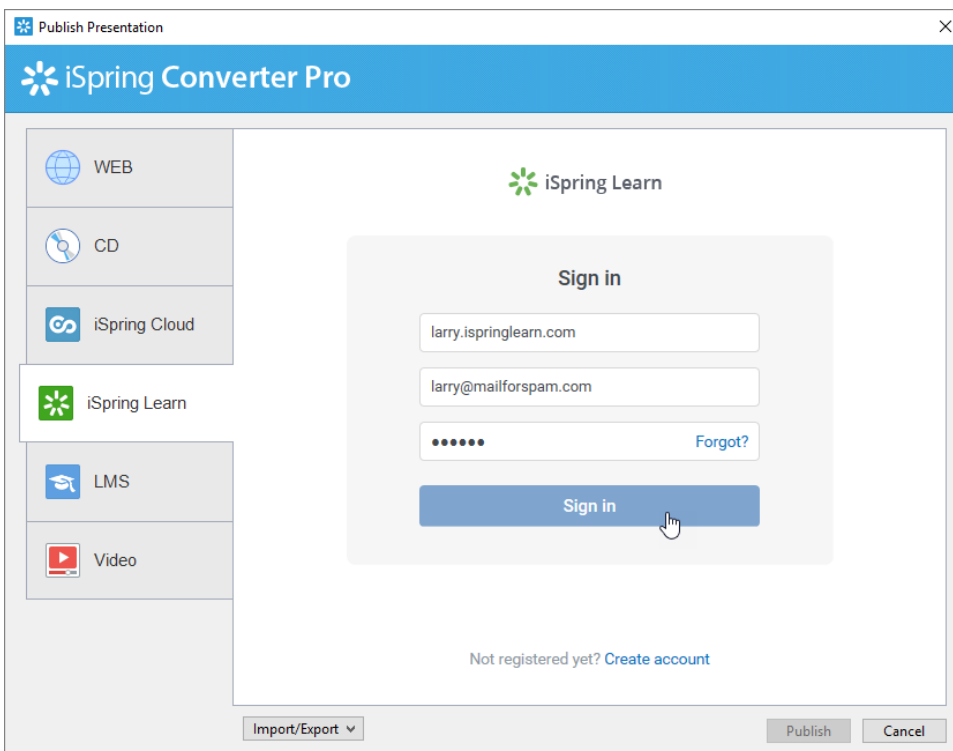


3. Sign up for a free account. Enter your email, name and phone number and click **Create account**.



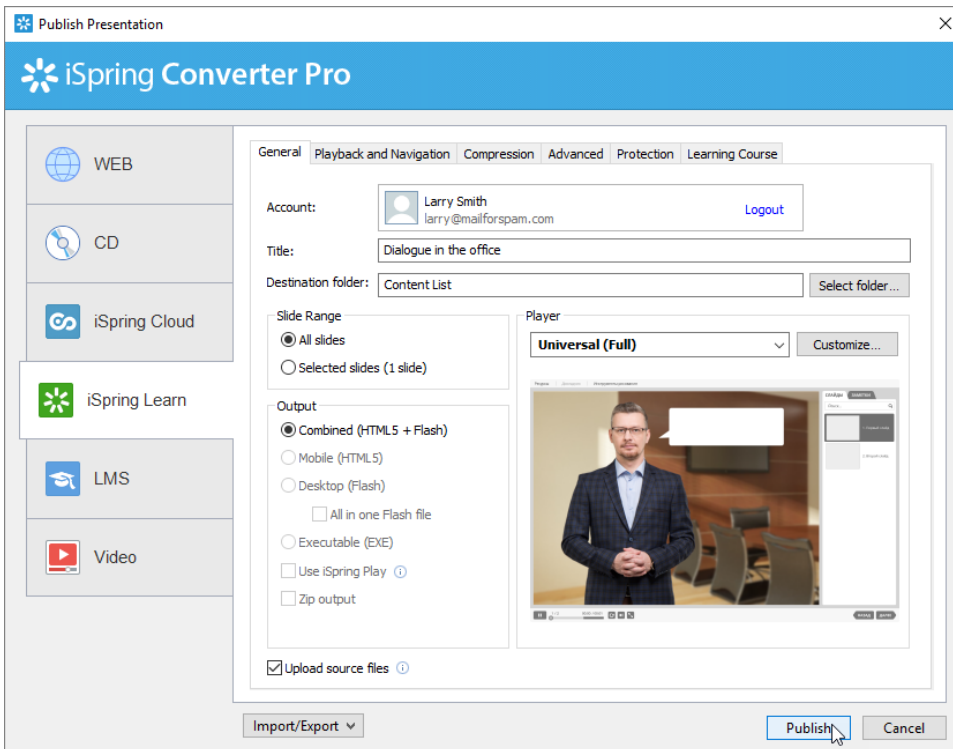
The screenshot shows the 'iSpring Converter Pro' application window. On the left is a sidebar with icons for WEB, CD, iSpring Cloud, iSpring Learn (highlighted), LMS, and Video. The main area displays the 'iSpring Learn' registration form. It includes a title 'Register', three input fields for email ('larry@mailforspam.com'), name ('Larry'), and phone number ('+1 844 347 7764'), and a blue 'Create account' button. Below the button is a link 'Already have an account? Sign in'. At the bottom of the window are 'Import/Export', 'Publish', and 'Cancel' buttons.

4. If you already have an account, click the **Sign In** link at the bottom, enter your existing account details (Account URL, Email and Password).



The screenshot shows the 'iSpring Converter Pro' application window with the 'iSpring Learn' sign-in form. The sidebar is identical to the previous screen. The main area displays the 'Sign in' form with three input fields: 'Account URL' ('larry.ispringlearn.com'), 'Email' ('larry@mailforspam.com'), and 'Password' (masked with dots). There is a 'Forgot?' link next to the password field and a blue 'Sign in' button. Below the button is a link 'Not registered yet? Create account'. At the bottom of the window are 'Import/Export', 'Publish', and 'Cancel' buttons.

5. When you enter your account details, iSpring validates this data, and you will see your email address in the **Account** field.



6. Click **Select folder** on the right of the **Destination folder** field and select the folder to upload your content. By default, your presentation will be uploaded to the general content list (Repository).
7. Check the box **Upload source files** if you would like to upload the source files of your presentation to iSpring Cloud.
8. Click the **Publish** button

iSpring Converter Pro will convert your presentation to Flash and HTML5 and then upload it to your [iSpring Learn](#) account. This is a time consuming process and it may take a few minutes.

If you don't have an Internet connection or use Proxy server to publish the presentation, you can upload the presentation to iSpring Learn manually via [iSpring Learn Web interface](#).