

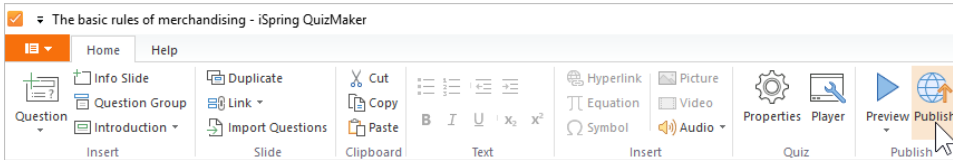
Publish from iSpring QuizMaker

Once you have finished editing your quiz, upload it to [iSpring Learn](#), a platform for delivering distance learning to employees and students with online testing and webinars.

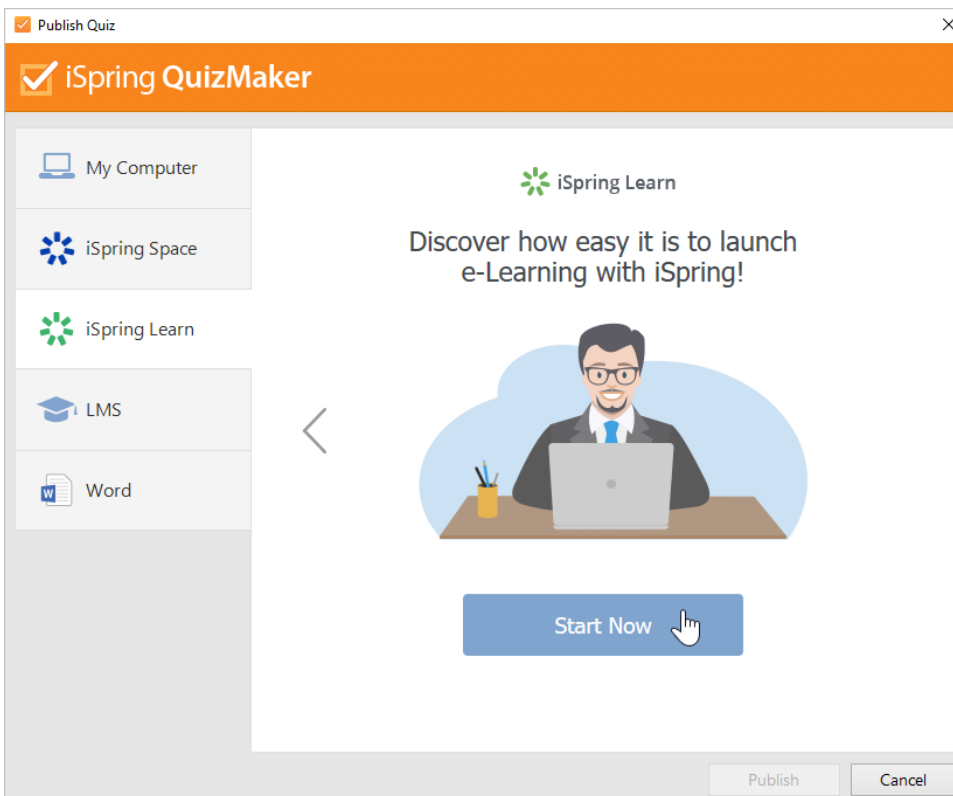
Learn [how to manually upload a content item to iSpring Learn](#) if your computer is disconnected from the Internet or online publishing doesn't complete because of an antivirus program or a proxy server error.

To publish your quiz to iSpring Learn:

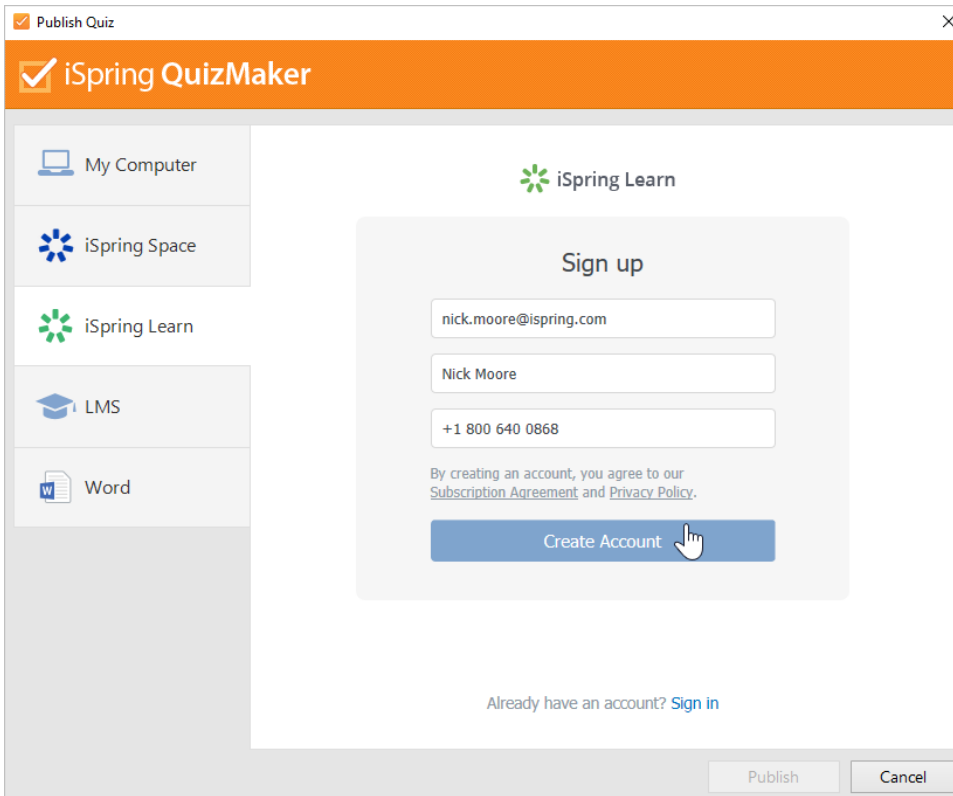
1. Click **Publish** on the iSpring QuizMaker toolbar.



2. Choose the **iSpring Learn** tab.
Browse through the picture gallery and click **Start Now**.



3. Create a new free iSpring Learn account right in the publishing window. Enter your email, name, and phone number, and click **Create Account**.
You will receive an email with your login details.



Publish Quiz [X]

iSpring QuizMaker

My Computer

iSpring Space

iSpring Learn

LMS

Word

iSpring Learn

Sign up

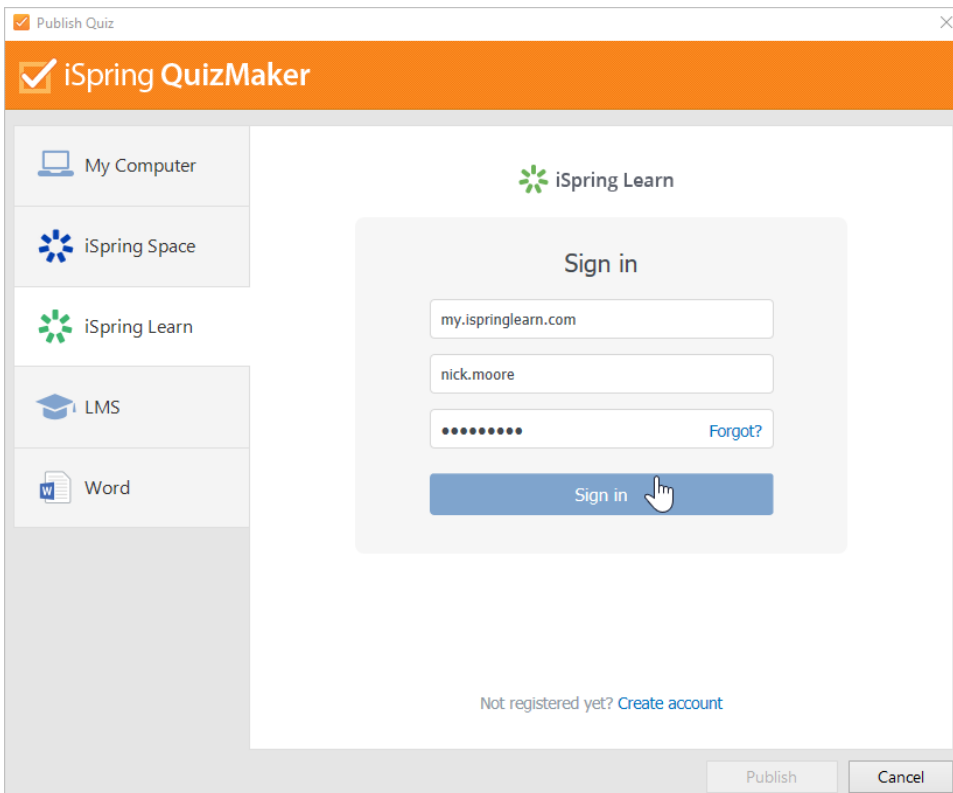
By creating an account, you agree to our [Subscription Agreement](#) and [Privacy Policy](#).

Create Account

Already have an account? [Sign in](#)

Publish **Cancel**

- If you are already registered, click the **Sign in** link at the bottom of the window and enter your email and password for your iSpring Learn account. Then click **Sign In**. The specified data will be saved in iSpring QuizMaker, and you do not have to enter it every time.



Publish Quiz [X]

iSpring QuizMaker

My Computer

iSpring Space

iSpring Learn

LMS

Word

iSpring Learn

Sign in

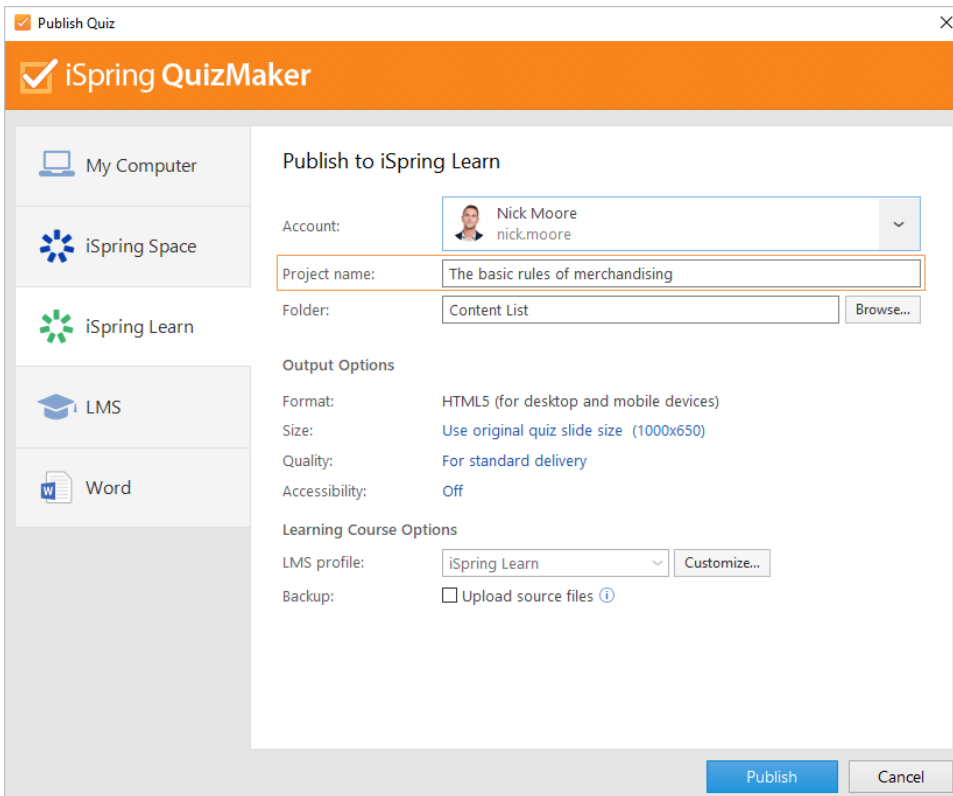
[Forgot?](#)

Sign in

Not registered yet? [Create account](#)

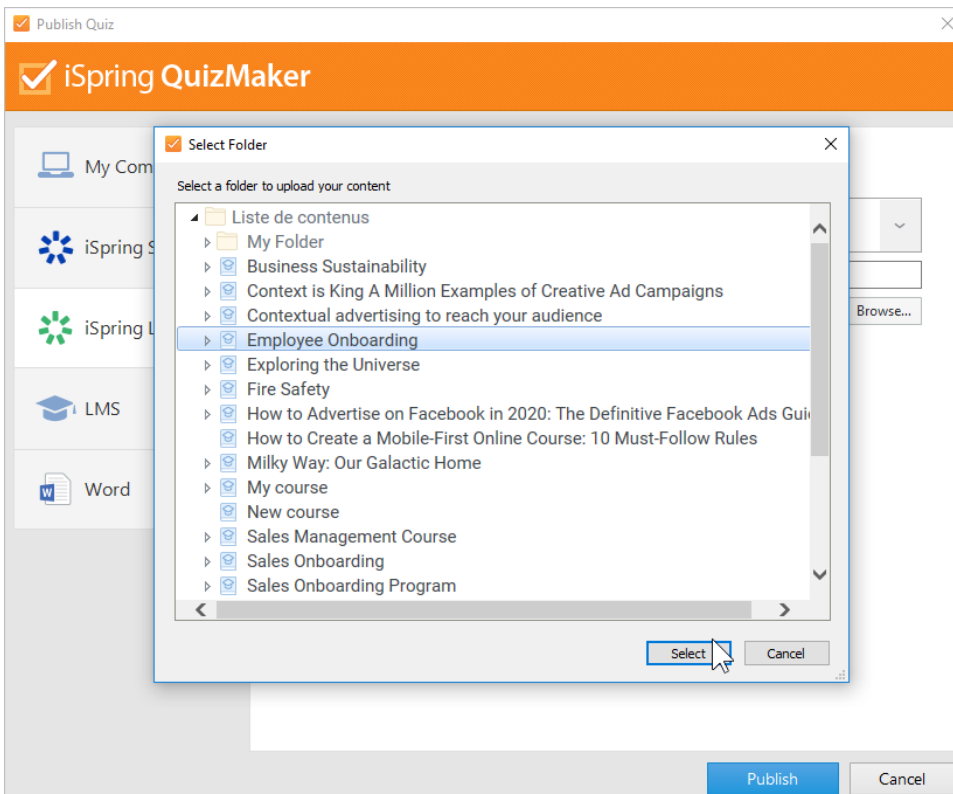
Publish **Cancel**

- Enter the title of the content item in the **Project name** field. By default, the title is the same as that of the PowerPoint presentation.



6. Then, click **Browse...** to the right of the **Folder** field and choose a course you want to upload your content to. After that, click **Select**.

If you want to replace one of the course modules, mouse over that module and click **Select**. Learn more about the module replacement feature in the [Replacing Content while Publishing](#) article.



7. Then, set up output options:

- [Specify how the quiz will behave in a browser](#)
- [Select the quality level of images, audio, and video files](#)
- [Publish the quiz in the accessible mode](#)

Publish Quiz

iSpring QuizMaker

My Computer

iSpring Space

iSpring Learn

LMS

Word

Publish to iSpring Learn

Account: Nick Moore
nick.moore

Project name: The basic rules of merchandising

Folder: Liste de contenus/Employee Onboarding **Browse...**

Output Options

Format: HTML5 (for desktop and mobile devices)

Size: Use original quiz slide size (1000x650)

Quality: For standard delivery

Accessibility: Off

Learning Course Options

LMS profile: iSpring Learn **Customize...**

Backup: ☐ Upload source files ⓘ

Publish **Cancel**

8. Next, specify the upload options.

- Click the **Customize** button next to the **Profile** menu in which iSpring Learn is selected as the default.

Publish Quiz

iSpring QuizMaker

My Computer

iSpring Space

iSpring Learn

LMS

Word

Publish to iSpring Learn

Account: Nick Moore
nick.moore

Project name: The basic rules of merchandising

Folder: Liste de contenus/Employee Onboarding **Browse...**

Output Options

Format: HTML5 (for desktop and mobile devices)

Size: Use original quiz slide size (1000x650)

Quality: For standard delivery

Accessibility: Off

Learning Course Options

LMS profile: iSpring Learn **Customize...**

Backup: ☐ Upload source files ⓘ

Publish **Cancel**

In the opened window, add tags, description, and the quiz author, and set up progress and completion parameters.

Properties [X]

Course Information

Course name:

Tags:

Description:

Author:

- In the **Backup** field, select **Upload source files** so that you and your administrators will be able to download the source files of the quiz in iSpring Learn.

☒ Publish Quiz [X]

iSpring QuizMaker

Publish to iSpring Learn

My Computer

iSpring Space

iSpring Learn

LMS

Word

Account:

Project name:

Folder:

Output Options

Format: HTML5 (for desktop and mobile devices)

Size: Use original quiz slide size (1000x650)

Quality: For standard delivery

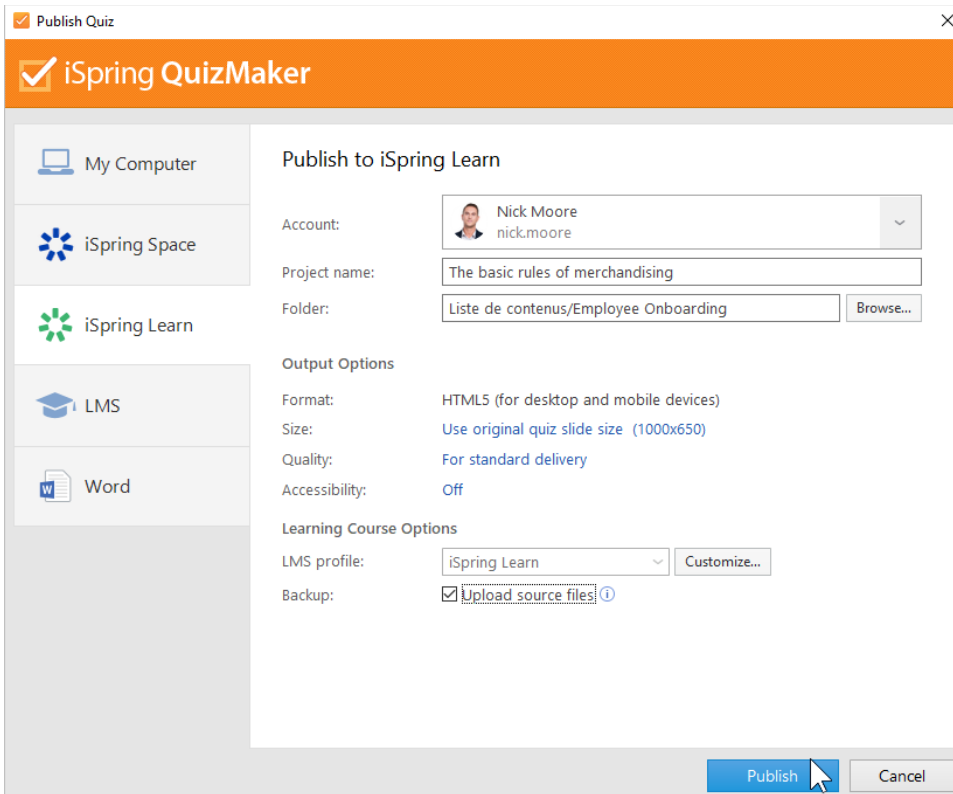
Accessibility: Off

Learning Course Options

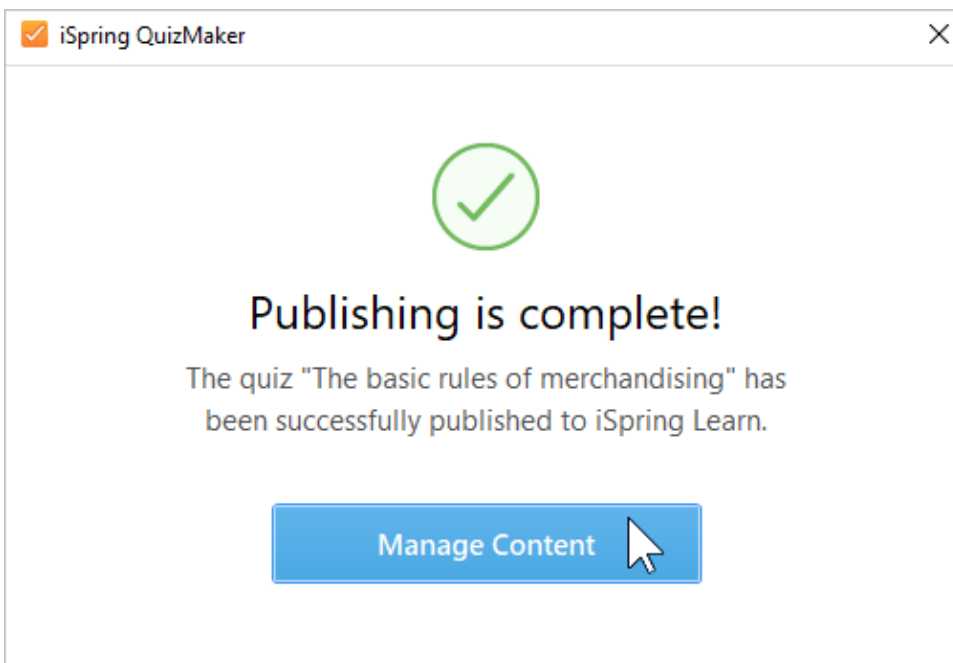
LMS profile:

Backup: ☒ Upload source files

9. Finally, click the **Publish** button.



10. When the publishing process is successfully completed, a new window will open. To open the published quiz in the iSpring Learn interface, click **Manage Content**.



11. You will see the quiz added to a course in your iSpring Learn account.

Employee Onboarding

Course

Outline


General

Notifications

Availability


Completion

List of course modules



The basic rules of merchandising

Here are 10 best-practice merchandising rules to help freshen your store's look, increase customer interest and boost sales.



The Four Phases of Employee Experience

Type description ...