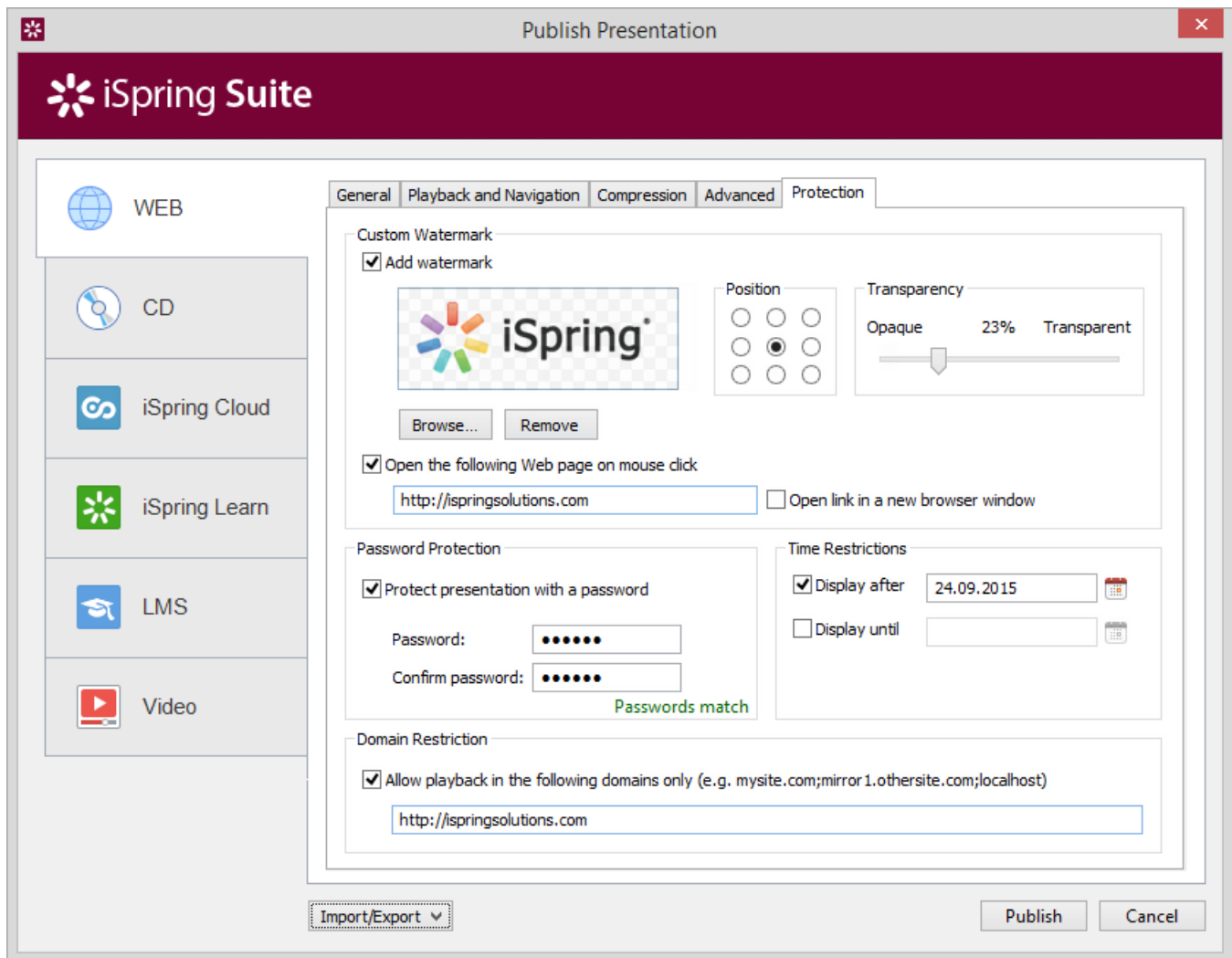


# Protection Settings

Your copyrights can now be protected with a watermark on your slides, password for your presentation, and playback on a certain domain only.

- [Watermark protection of your slides](#)
- [Password protection of your presentation](#)
- [Time restrictions](#)
- [Domain restriction](#)



## Watermark protection of your slides

Watermark image, transparency and position are fully customizable. Plus, you can set a web page to be opened in the same or separate browser window, when a watermark is clicked.

1. To add a watermark to your slides, select **Add watermark** and select an image from your resource.
2. Use the **Position** radio buttons to choose where to place your watermark on a slide.
3. Move the **Transparency** slider to regulate the transparency level of your watermark from 0% (Opaque) to 100% (Transparent).
4. Select the **Open the following Web page on mouse click** checkbox, to have the specified web page opened, when the watermark is clicked.
5. To have a web page opened in a separate browser window, select **Open link in a new browser window**.

## Password protection of your presentation

The password protects your presentation from unauthorized viewing. Users will be prompted to enter password, when they try to view the slideshow.

1. Select **Protect presentation with a password**.
2. Enter your password twice in the **Password** and **Confirm password** fields.

**Attention:** Please, take into consideration that the password is saved in the Flash presentation in encrypted form. There is no way to restore this password except for trying all possible alternatives.

## Time restrictions

Presentation playback can be limited in time, so that it can be viewed only before and/or after specified dates. When a presentation expires, users won't be able to view it.

To add a time restriction:

1. Select the **Display after** or **Display until** checkbox.
2. Choose a date in the pop-up calendar.

Note: You can use both options to specify a limited period of time when a presentation will be available for viewing.

## Domain restriction

Restricts presentation playback to the specified domain(s). Generated presentation will play only in the specified domain(s) and all its subdomains. It won't play on a local computer or on another web site. Use this option, if you want to protect your content from unauthorized redistribution.

**Note:** This option doesn't stop a presentation from playing, when it is referenced from another domain using the <object> HTML tag.