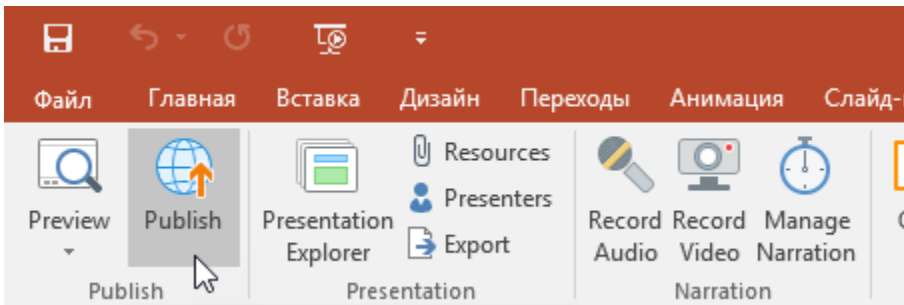


Publishing to iSpring Learn

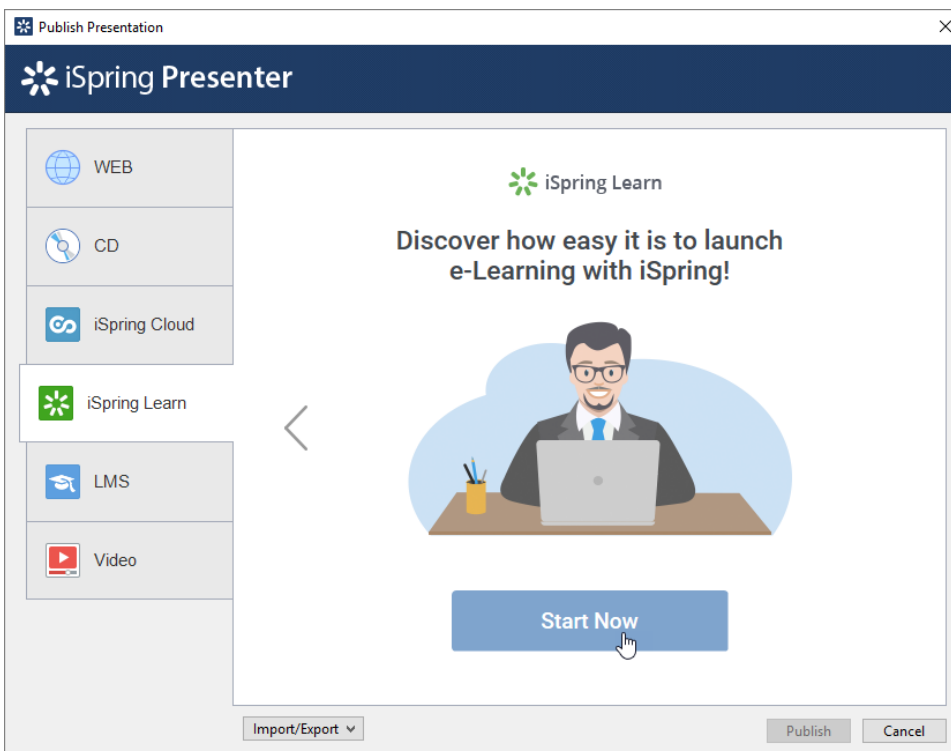
iSpring Learn is an easy-to-use cloud-based Learning Management System for training and assessing employees or students online.

To publish your presentation to iSpring Learn:

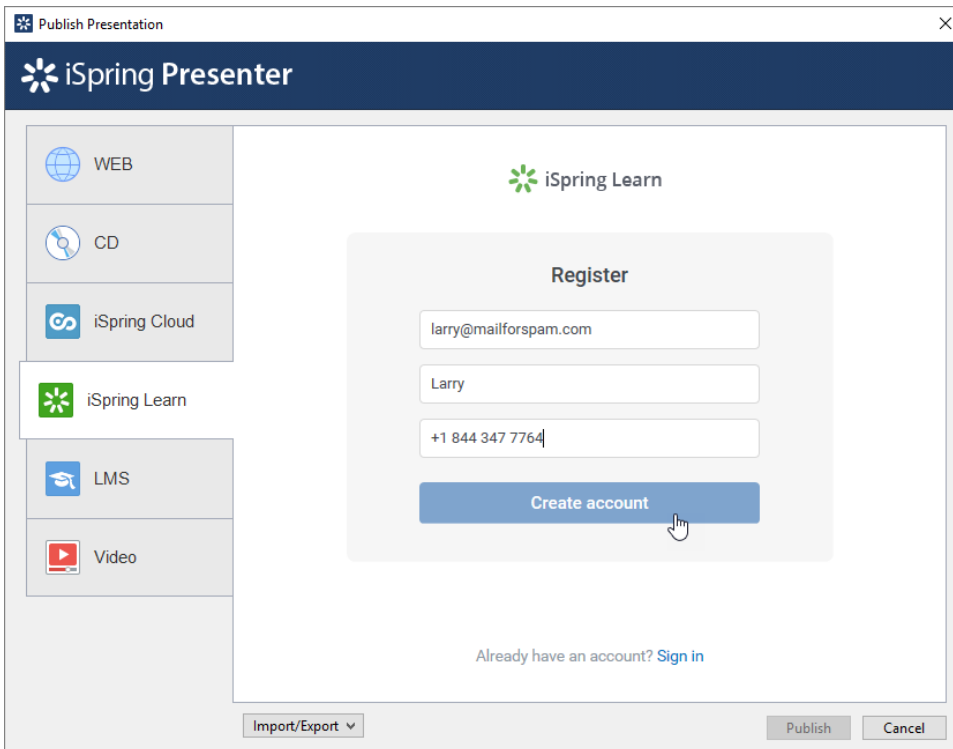
1. Click **Publish** on the toolbar in the iSpring Presenter tab



2. Choose the iSpring Learn tab. Look through the picture gallery and click **Start Now**.

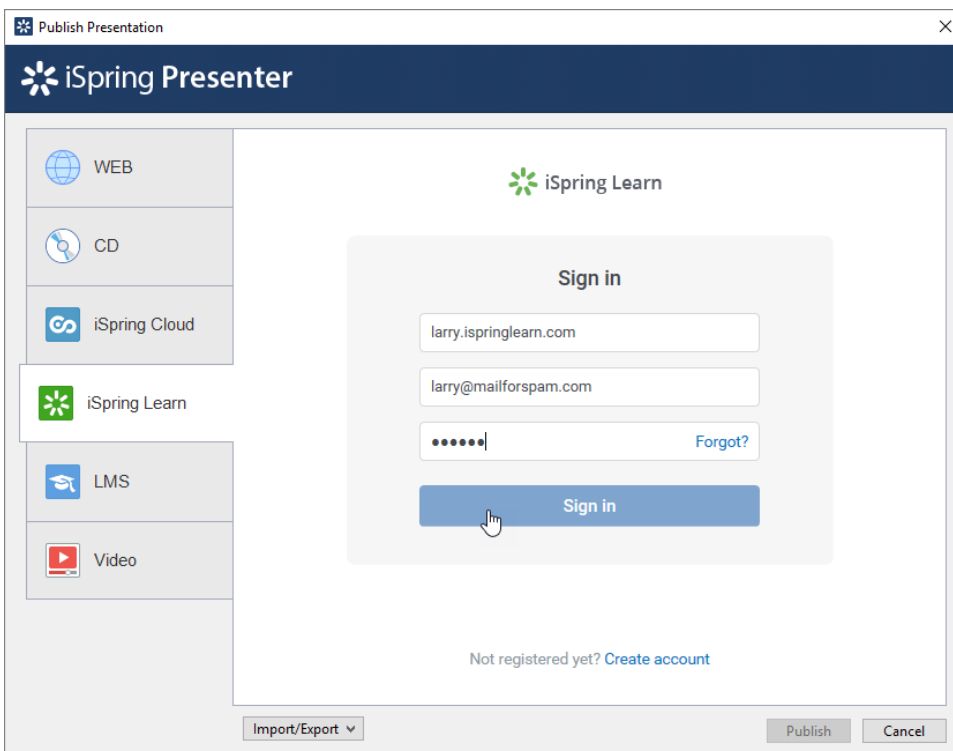


3. Sign up for a free account. Enter your email, name and phone number and click **Create account**.



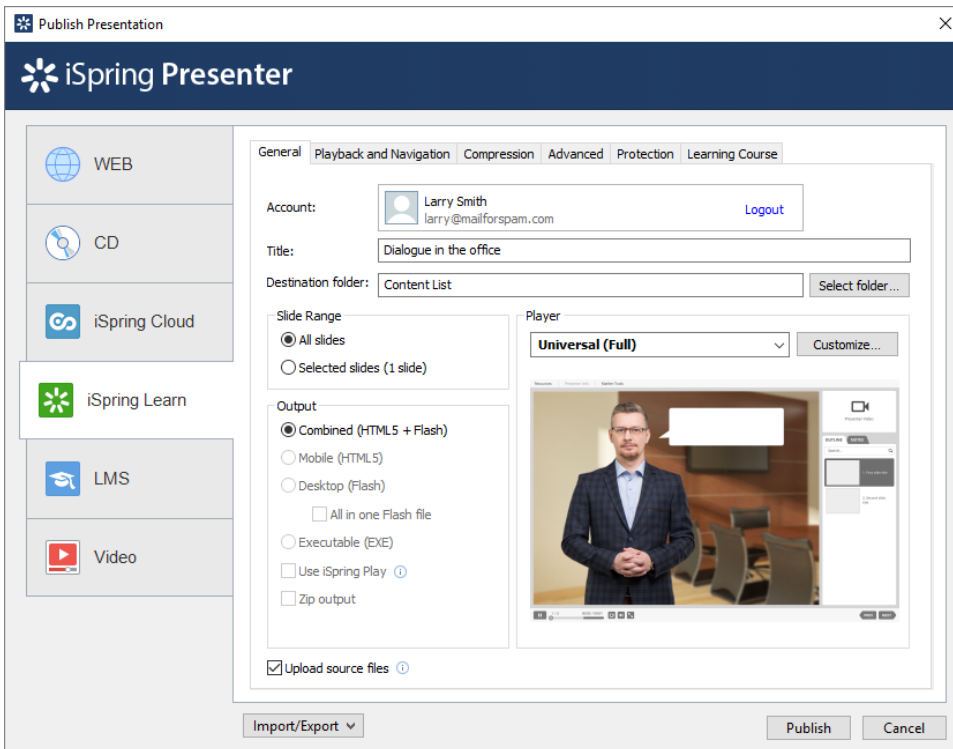
The screenshot shows the 'iSpring Presenter' application window. On the left is a sidebar with icons for WEB, CD, iSpring Cloud, iSpring Learn (highlighted), LMS, and Video. The main area displays the 'iSpring Learn' logo and a 'Register' form. The form contains three input fields: 'Email' with 'larry@mailforspam.com', 'Name' with 'Larry', and 'Phone' with '+1 844 347 7764'. Below these is a blue 'Create account' button with a mouse cursor hovering over it. At the bottom of the form area, it says 'Already have an account? [Sign in](#)'. The footer of the window has 'Import/Export' (with a dropdown arrow), 'Publish', and 'Cancel' buttons.

4. If you already have an account, click the **Sign In** link at the bottom, enter your existing account details (Account URL, Email and Password).



The screenshot shows the 'iSpring Presenter' application window with the 'Sign in' form. The sidebar is identical to the previous screen. The main area displays the 'iSpring Learn' logo and a 'Sign in' form. The form contains three input fields: 'Account URL' with 'larry.ispringlearn.com', 'Email' with 'larry@mailforspam.com', and 'Password' with masked characters '.....'. To the right of the password field is a 'Forgot?' link. Below these is a blue 'Sign in' button with a mouse cursor hovering over it. At the bottom of the form area, it says 'Not registered yet? [Create account](#)'. The footer of the window has 'Import/Export' (with a dropdown arrow), 'Publish', and 'Cancel' buttons.

5. When you enter your account details, iSpring validates this data, and you will see your email address in the **Account** field.



6. Click **Select folder** on the right of the **Destination folder** field and select the folder to upload your content. By default, your presentation will be uploaded to the general content list (Repository).
7. Check the box **Upload source files** if you would like to upload the source files of your presentation to iSpring Cloud.
8. Click the **Publish** button

iSpring Presenter will convert your presentation to Flash and HTML5 and then upload it to your [iSpring Learn](#) account. This is a time consuming process and it may take a few minutes.

If you don't have an Internet connection or use Proxy server to publish the presentation, you can upload the presentation to iSpring Learn manually via [iSpring Learn Web interface](#).