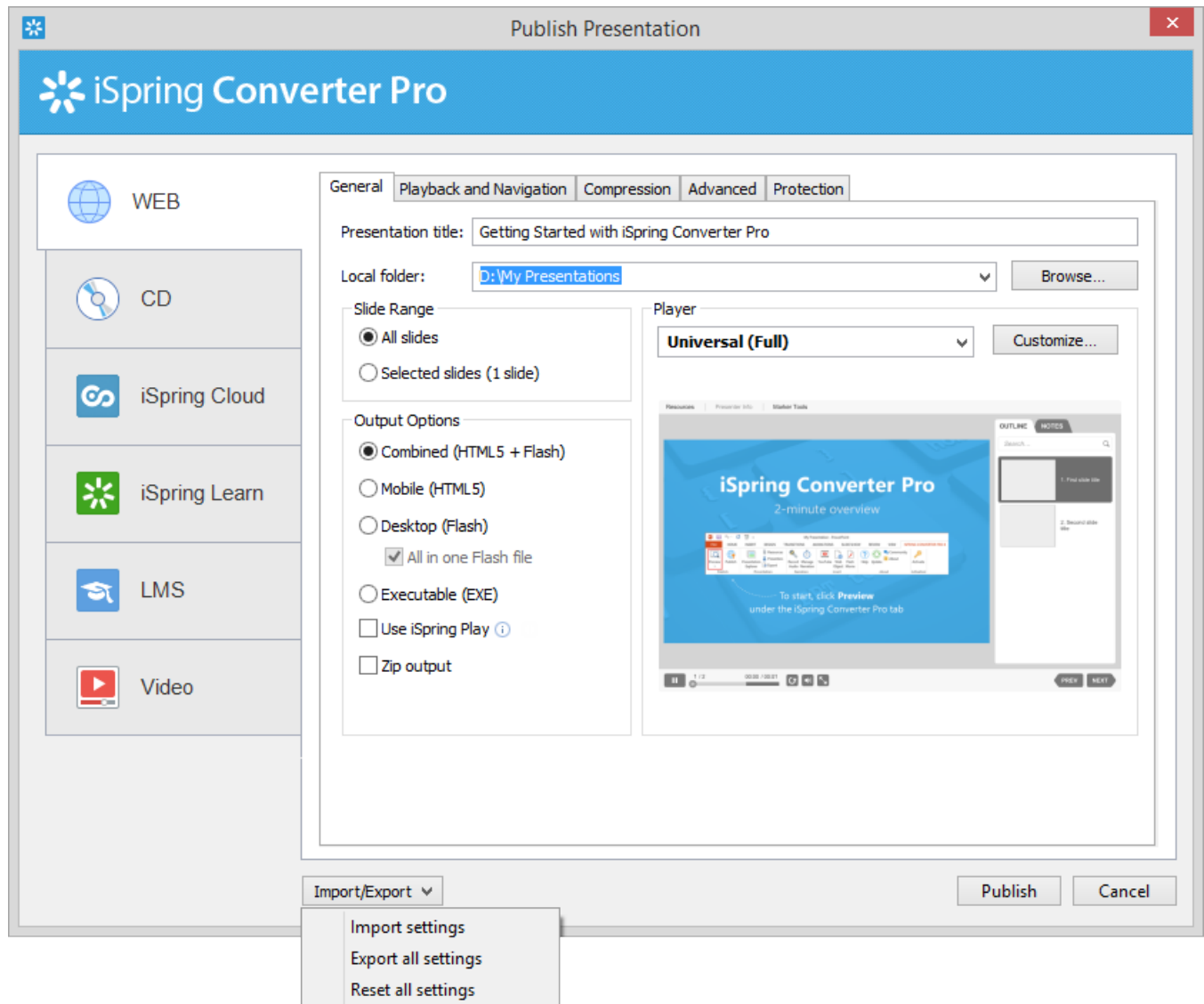


# Importing and Exporting Publish Settings

All settings selected in the Publish window can be exported into a single file for further use on a different computer. Additionally, you can quickly reset the modified publish settings to default.

To import, export or reset the publish settings, choose one of the available options at the bottom of the Publish window.

- [Importing Publish Settings](#)
- [Exporting Publish Settings](#)
- [Resetting Publish Settings](#)



## Importing Publish Settings

To import the publish settings:

1. Select the **Import settings** option in the **Import/Export** drop down list
2. In the **Open** dialog box, select your publish settings file with the extension **.ispub**
3. Click **Open**

All publish settings from your file will be applied.

## Exporting Publish Settings

To export the publish settings:

1. Select the **Export all settings** option in the **Import/Export** drop down list
2. In the **Save As** dialog box, type in the name of your publish settings file
3. Click **Save** button

All your Publish settings will be saved into an .ispub file.

## Resetting Publish Settings

To reset the publish settings to their defaults:

1. Select the **Reset all settings** option in the **Import/Export** drop down list
2. All publish settings will be reset to the default values.