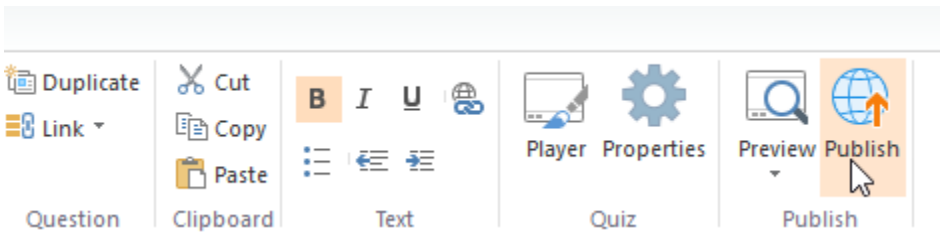


Publishing Quizzes to iSpring Learn

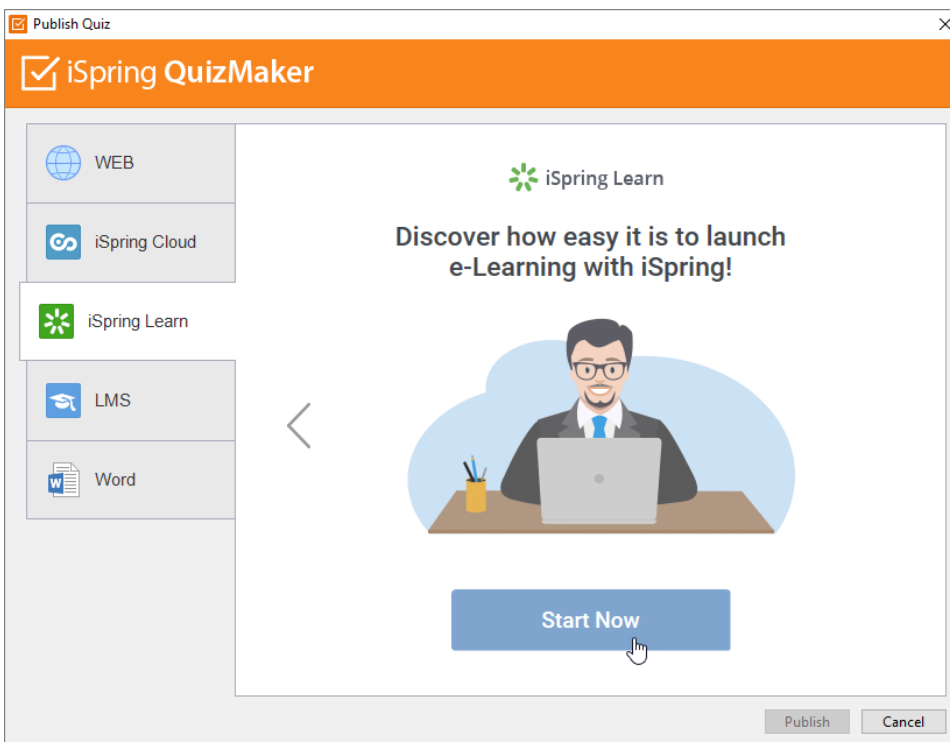
iSpring Learn is an easy-to-use cloud-based Learning Management System for training and assessing employees or students online.

To publish your quiz to iSpring Learn:

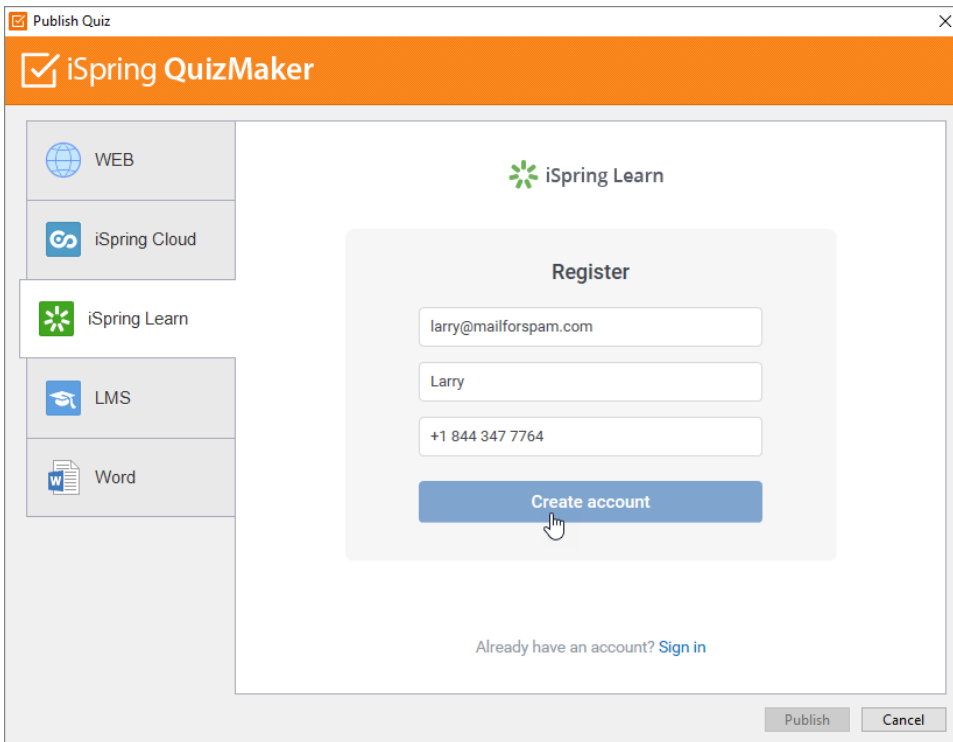
1. Click **Publish** on the toolbar.



2. Choose the iSpring Learn tab. Look through the picture gallery and click **Start Now**.

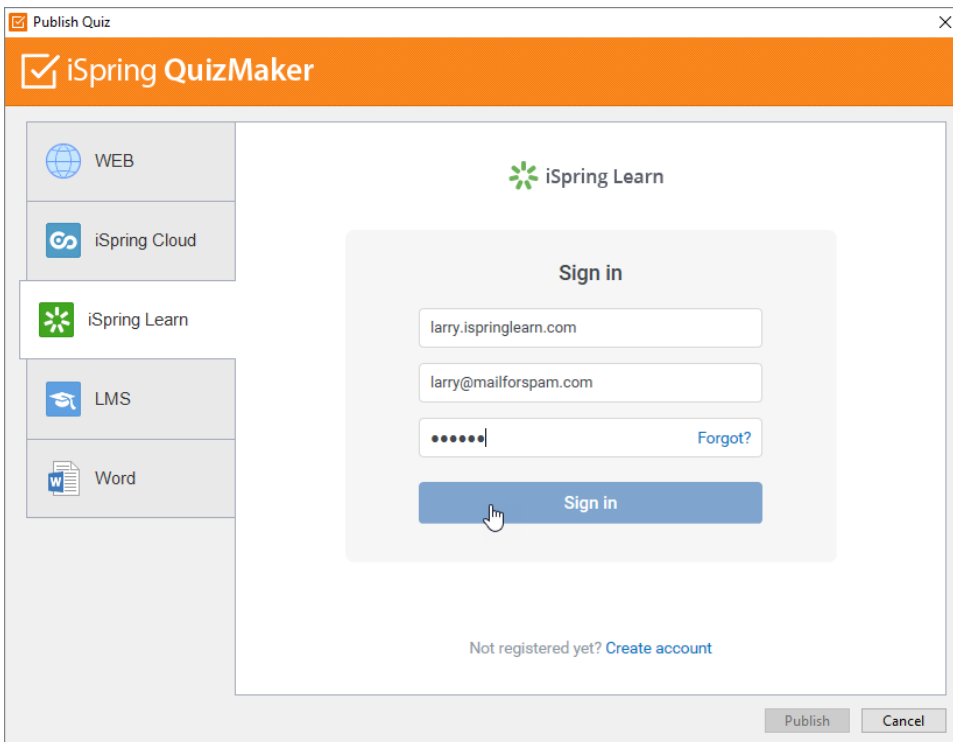


3. Sign up for a free account. Enter your email, name and phone number and click **Create account**.



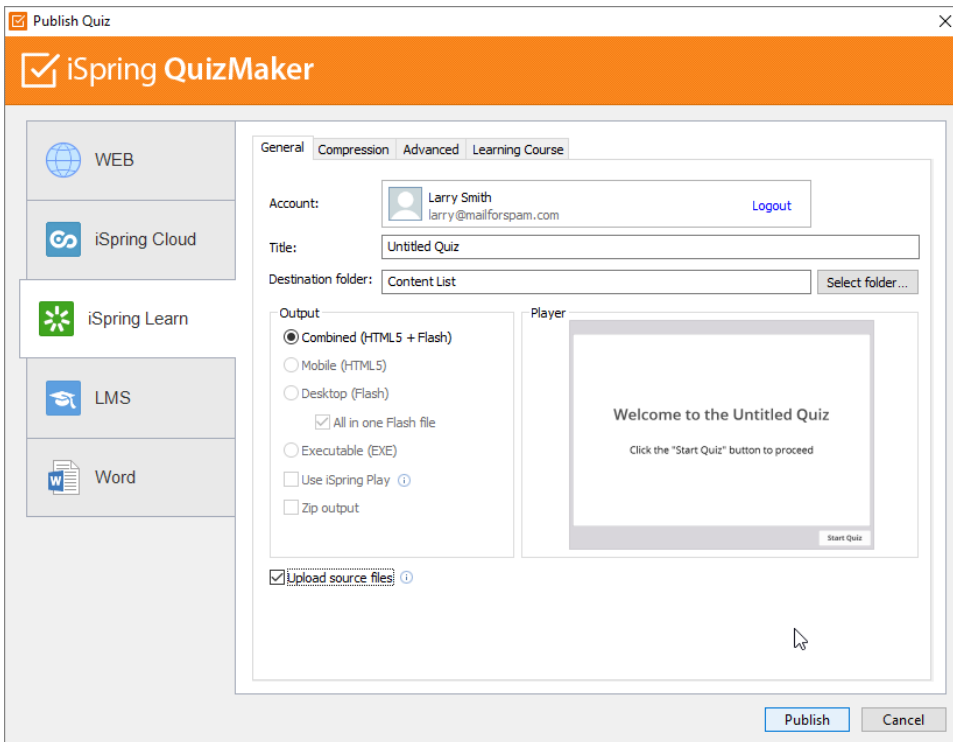
The screenshot shows the 'iSpring QuizMaker' application window. On the left is a sidebar with icons for 'WEB', 'iSpring Cloud', 'iSpring Learn' (highlighted), 'LMS', and 'Word'. The main area displays the 'iSpring Learn' registration form. It has three input fields: 'Email' (larry@mailforspam.com), 'Name' (Larry), and 'Phone' (+1 844 347 7764). Below these is a blue 'Create account' button with a mouse cursor hovering over it. At the bottom of the form, it says 'Already have an account? [Sign in](#)'. At the very bottom of the window are 'Publish' and 'Cancel' buttons.

4. If you already have an account, click the **Sign In** link at the bottom, enter your existing account details (Account URL, Email and Password).



The screenshot shows the 'iSpring QuizMaker' application window with the 'Sign in' form. The sidebar is the same as in the previous image. The main area displays the 'iSpring Learn' sign-in form. It has three input fields: 'Account URL' (larry.ispringlearn.com), 'Email' (larry@mailforspam.com), and 'Password' (masked with dots). To the right of the password field is a 'Forgot?' link. Below these is a blue 'Sign in' button with a mouse cursor hovering over it. At the bottom of the form, it says 'Not registered yet? [Create account](#)'. At the very bottom of the window are 'Publish' and 'Cancel' buttons.

5. When you enter your account details, iSpring validates this data, and you will see your email address in the **Account** field.



6. Click **Select folder** on the right of the **Destination folder** field and select the folder to upload your content. By default, your quiz will be uploaded to the general content list (Repository).
7. Check the box **Upload source files** if you would like to upload the source files of your quiz to iSpring Cloud.
8. Click the **Publish** button

iSpring QuizMaker will convert your quiz to Flash and HTML5 and then upload it to your [iSpring Learn](#) account. This is a time consuming process and it may take a few minutes.

If you don't have an Internet connection or use Proxy server to publish the quiz, you can upload the quiz to iSpring Learn manually via [iSpring Learn Web interface](#).