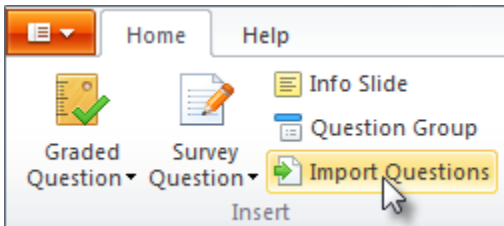


# Importing Questions from a Quiz

One more way to populate your quiz with questions is to import them from an existing quiz.

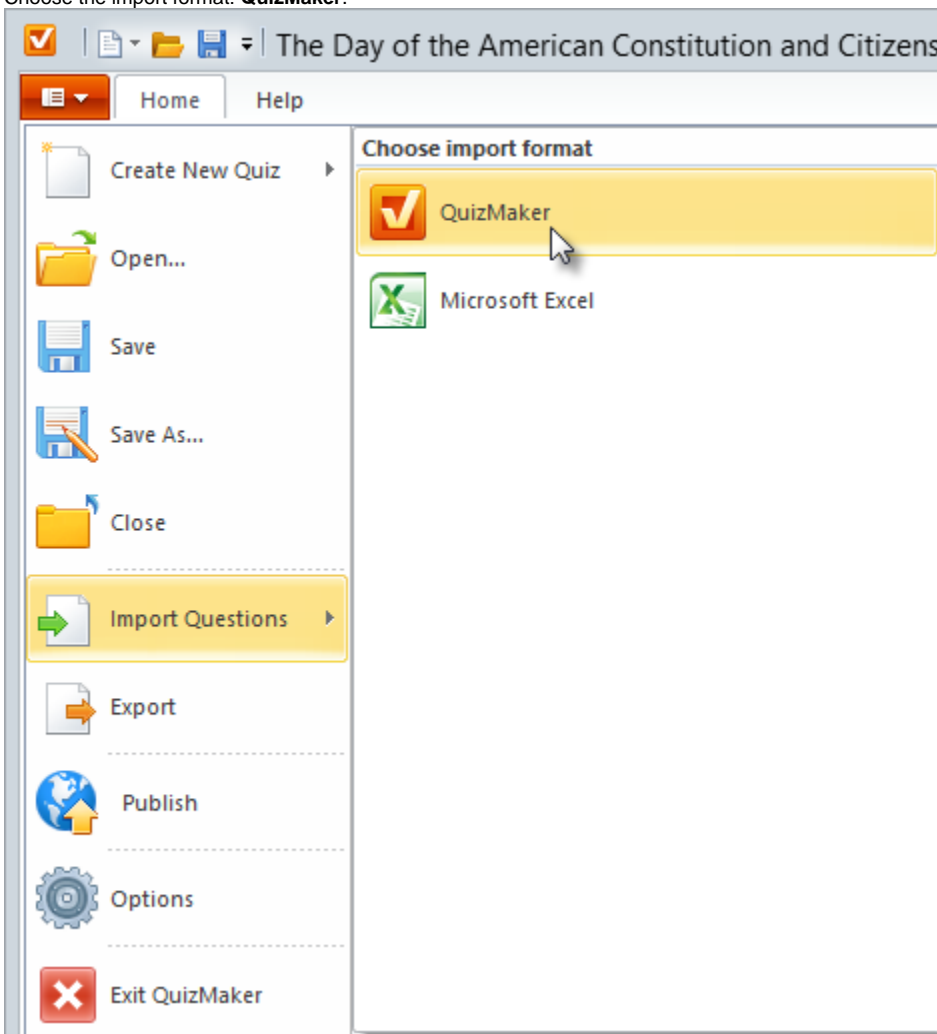
To import questions from an existing quiz for further editing:

1. Click the **Import** button in the Quiz section of the product toolbar. Select a quiz file that you want to import.
2. Click the **Open** button



or

1. Click the **QuizMaker** button in the upper left corner of the toolbar to open the Application menu.
2. Choose **Import Questions** in the Application menu.
3. Choose the import format: **QuizMaker**.



All questions from the selected quiz will be imported into new [Question Group](#) of your quiz.