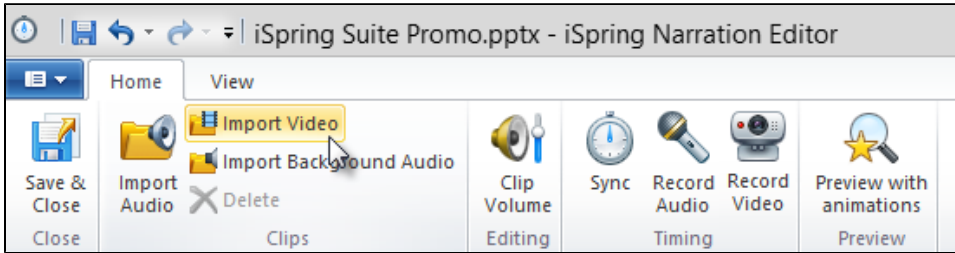


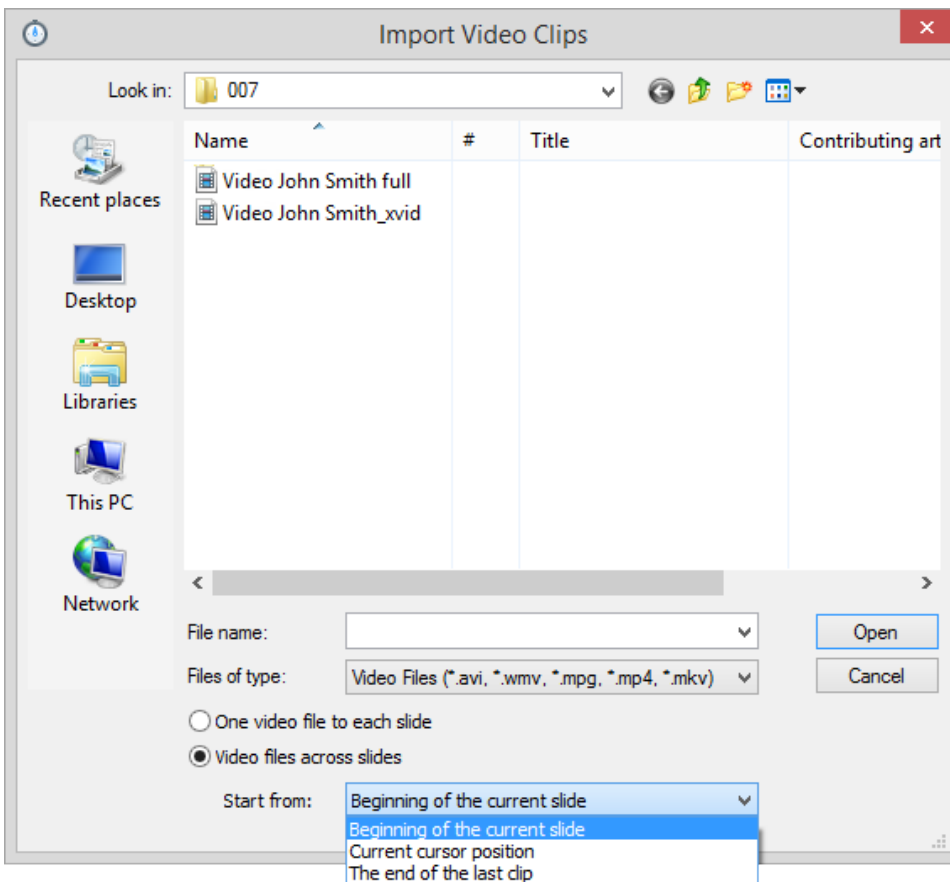
# Importing video across slides

To import video files across slides:

1. Click the **Import Video** button to launch the Import Video Clips window.



2. Navigate to the desired video file, select it.
3. Choose where you want to insert the video clip:
  - In the beginning of the current slide
  - At cursor position
  - After existing clips



4. Click **Open** to import the file  
or  
click **Cancel** to exit without importing the file.

The selected clip will be added to the timeline.

