

What's New in iSpring Suite 7

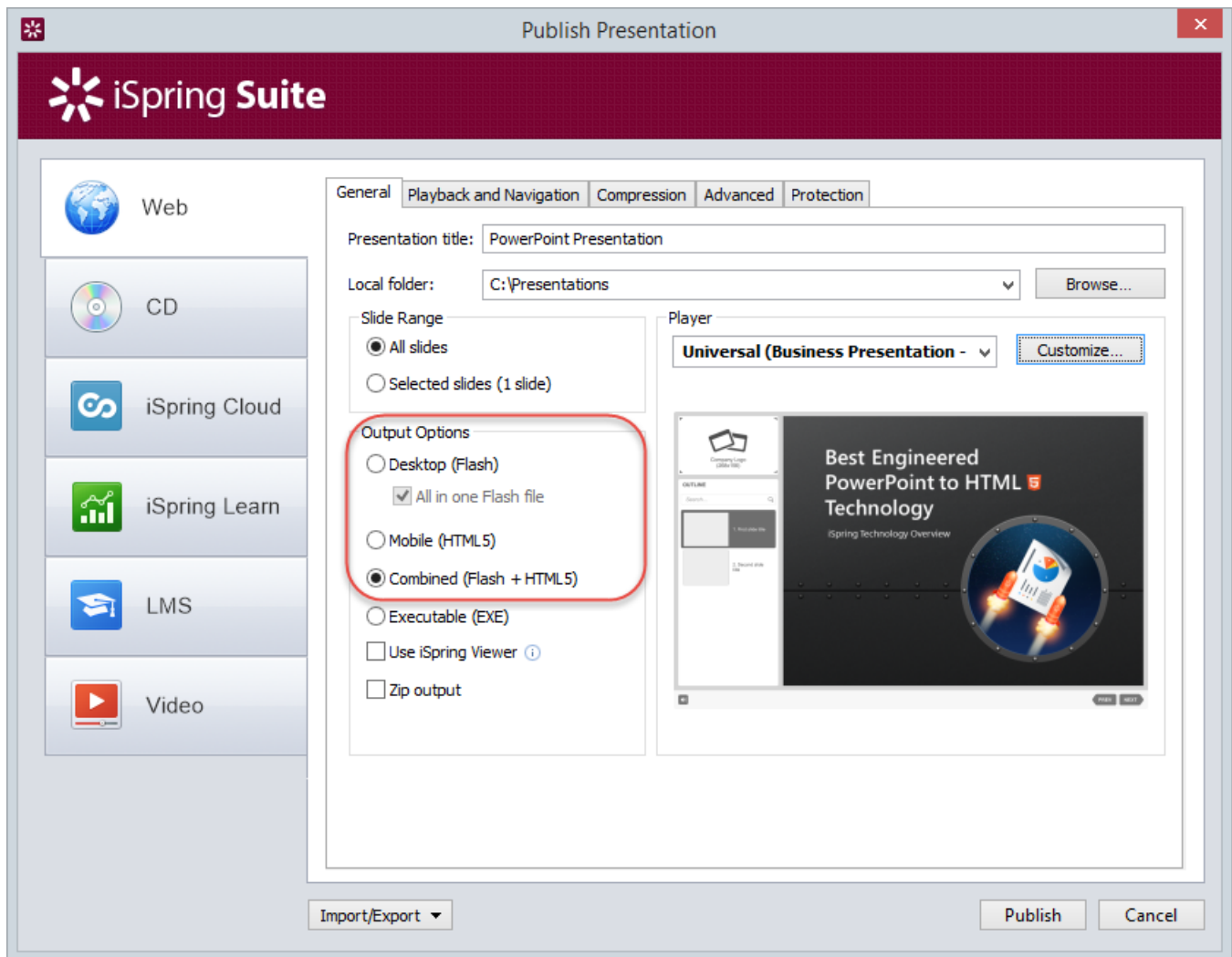
iSpring Suite 7 has been improved significantly, now featuring easy slide branching, enhanced narration recording capabilities and ability to generate Section 508 compliant content.

Flash and HTML5 presentations created with iSpring Suite 7 are now made even more attractive with the brand-new fully customizable player. The detailed description of the new features is provided below:

- [Publishing to Flash and HTML5](#)
- [Publishing Presentations to Video \(.MP4\) and YouTube](#)
- [Brand New Universal Player](#)
- [Save/recover state of presentation](#)
- [Characters](#)
- [Local Objects Insertion](#)
- [Experience API Support \(Tin Can API\)](#)
- [Easy Slide Branching](#)
- [Total Navigation Control](#)
- [Updated Quiz Editor](#)
- [Building Custom Quiz Themes](#)
- [Request information from the course takers](#)
- [Using Variables](#)
- [Spelling](#)
- [Viewing the presentation on various devices](#)
- [Uploading source files to iSpring Learn](#)
- [Improved Narration Editor](#)
- [Mass Import of Audio and Video Clips](#)
- [Better Video Support](#)

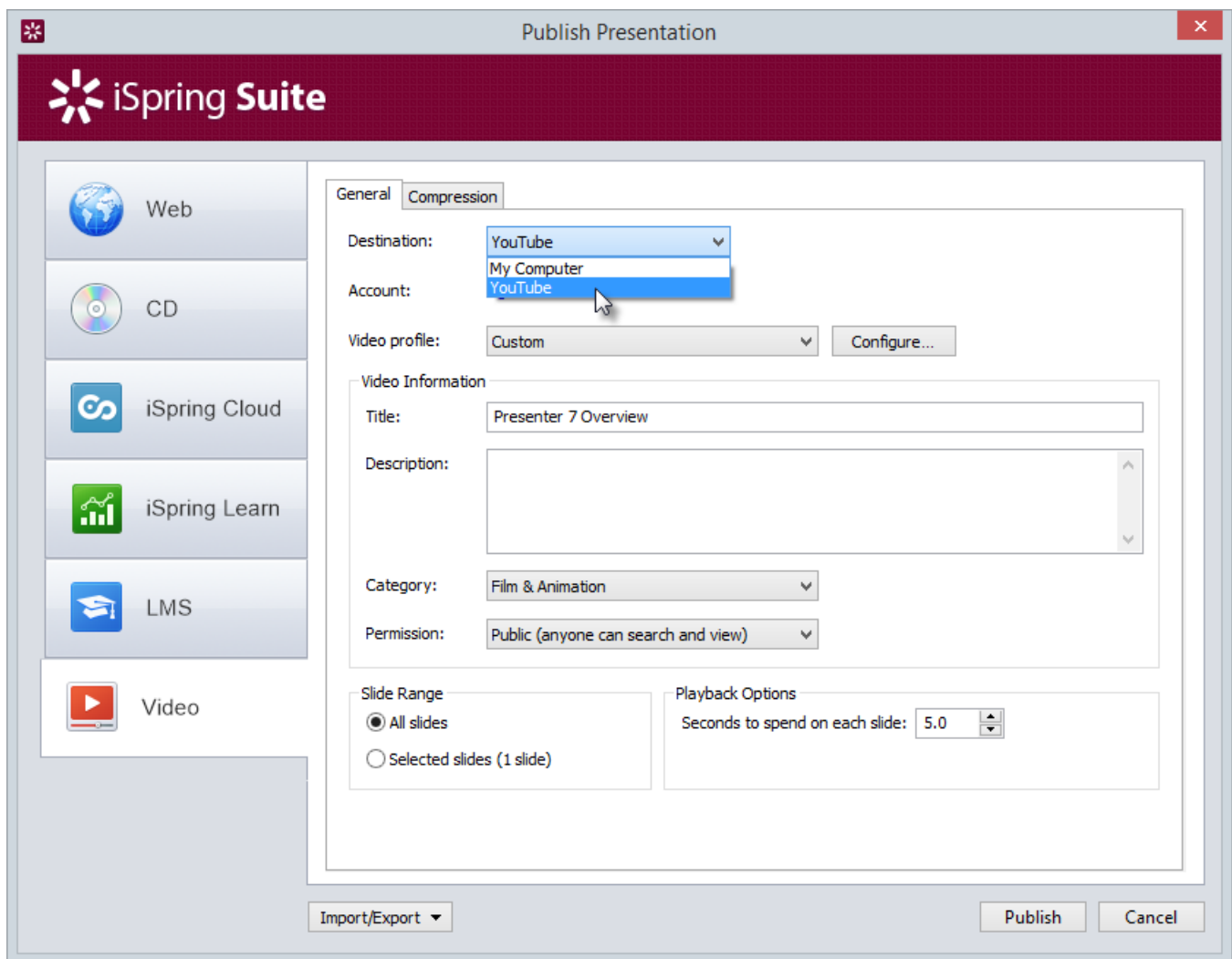
Publishing to Flash and HTML5

iSpring Suite 7 allows you to convert your PowerPoint content into Flash, HTML5 or in the Combined mode (Flash + HTML5). Now, you can create presentations and e-Learning courses that will be supported across devices: computers, tablets and smartphones.



Publishing Presentations to Video (.MP4) and YouTube

PowerPoint-to-video and YouTube converter is designed to simplify content conversion and sharing by direct uploading of converted PowerPoint presentations to YouTube, with all effects and background audio preserved in an .mp4 format.



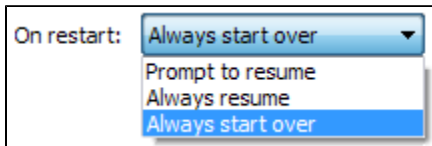
Brand New Universal Player

With iSpring Suite 7, you can create e-Learning courses with quizzes and surveys that adapt to screen size and orientation of all devices: desktops, laptops, Android tablets and iPads.



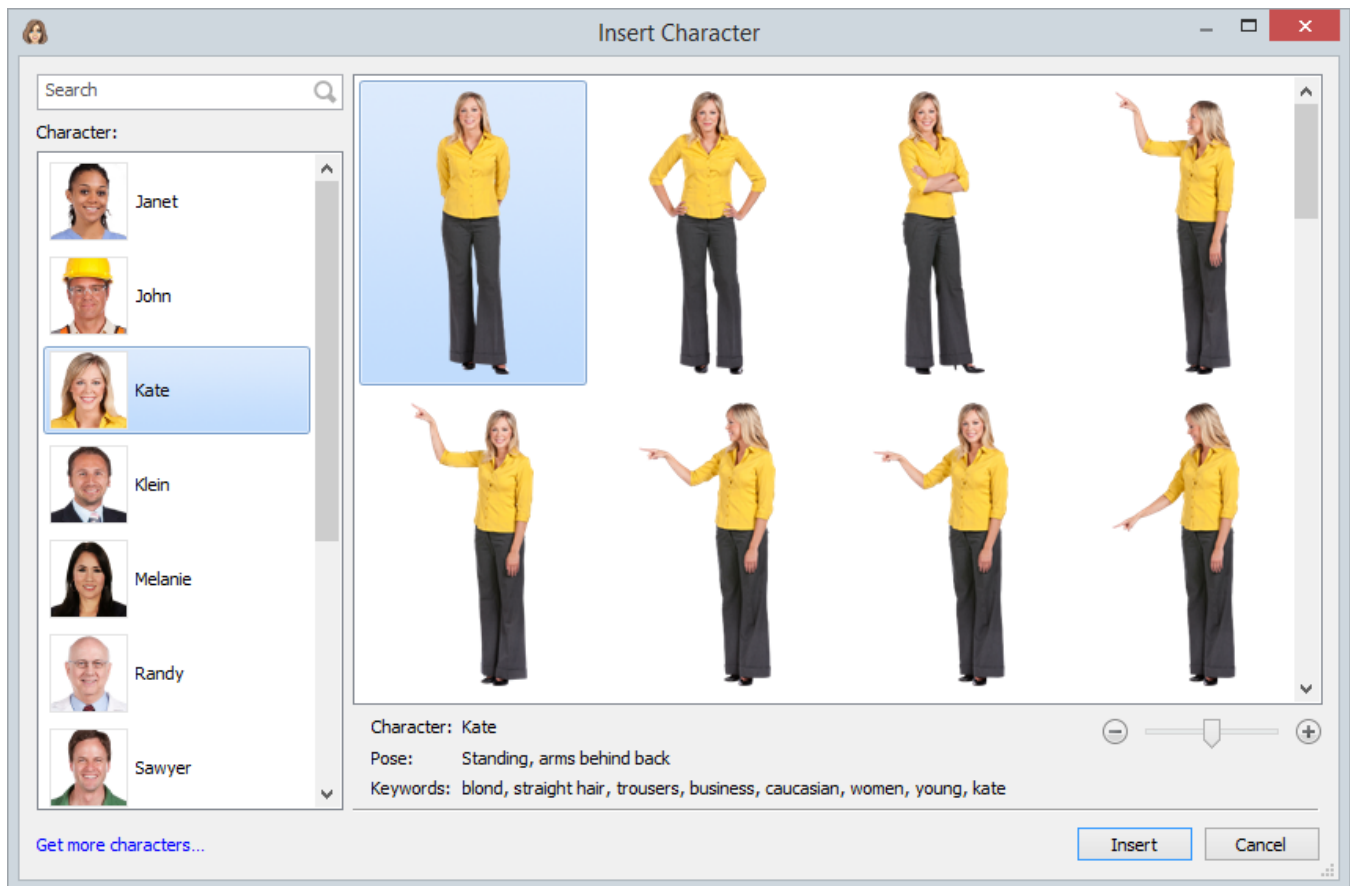
Save/recover state of presentation

Thanks to extended functionality of the "Resume" option, you can start taking the presentation on one device and continue completing the presentation on another one, with progress saved.



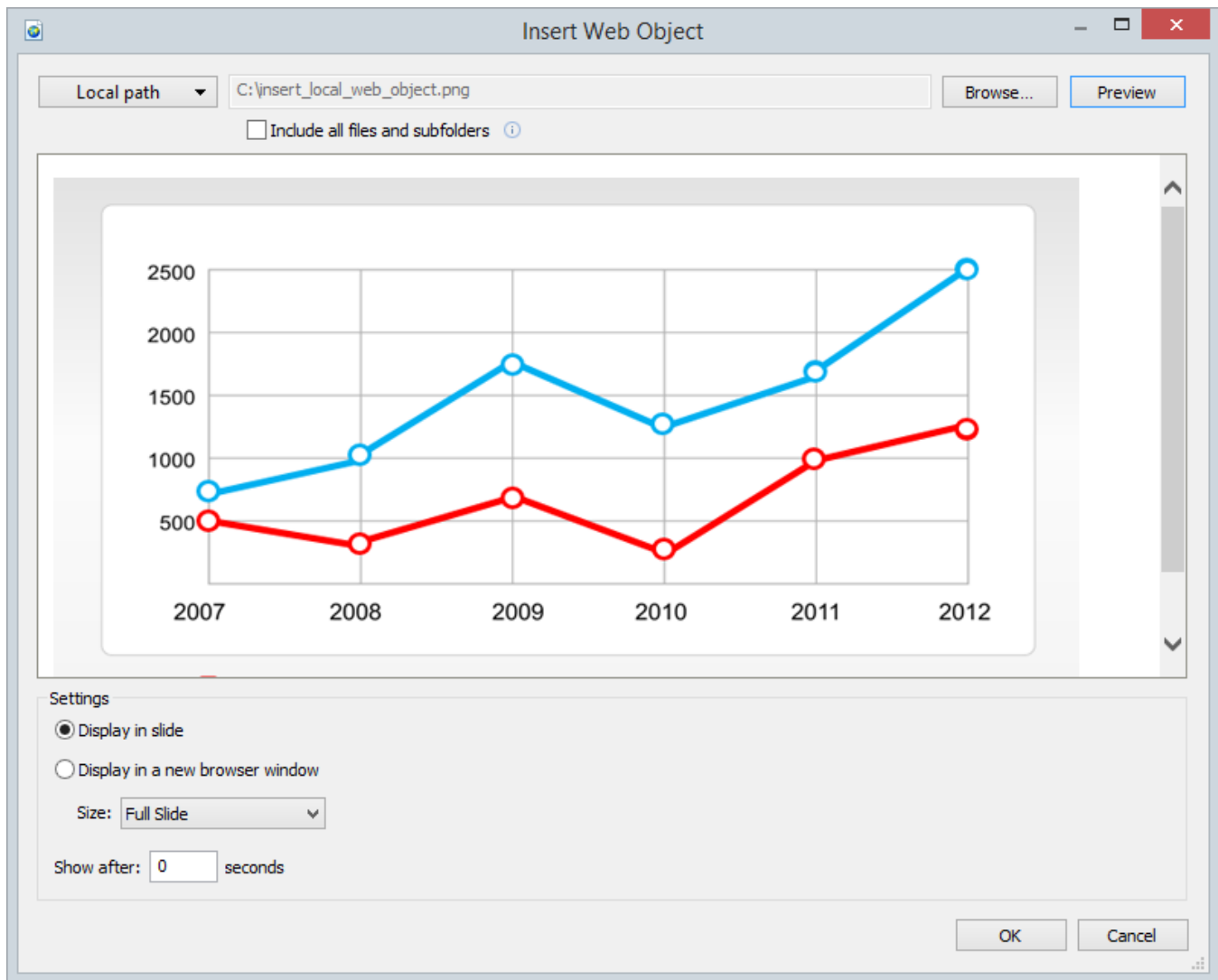
Characters

Vitalize your content by adding characters. With presentation you get access to a wide collection of characters that will suite a variety of learning topics.



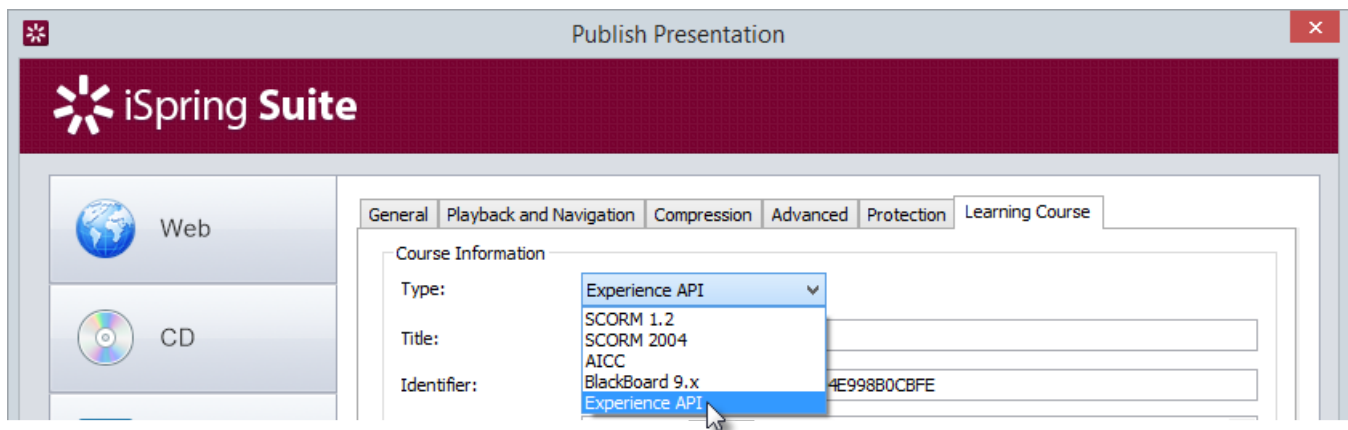
Local Objects Insertion

With this feature, you can add to a presentation any file stored on your PC: a HTML page, a Flash movie or a PDF document. It also allows you to flexibly manage the size of an object and its behavior within a slide. The files you added are integrated with the presentation to become available everywhere.



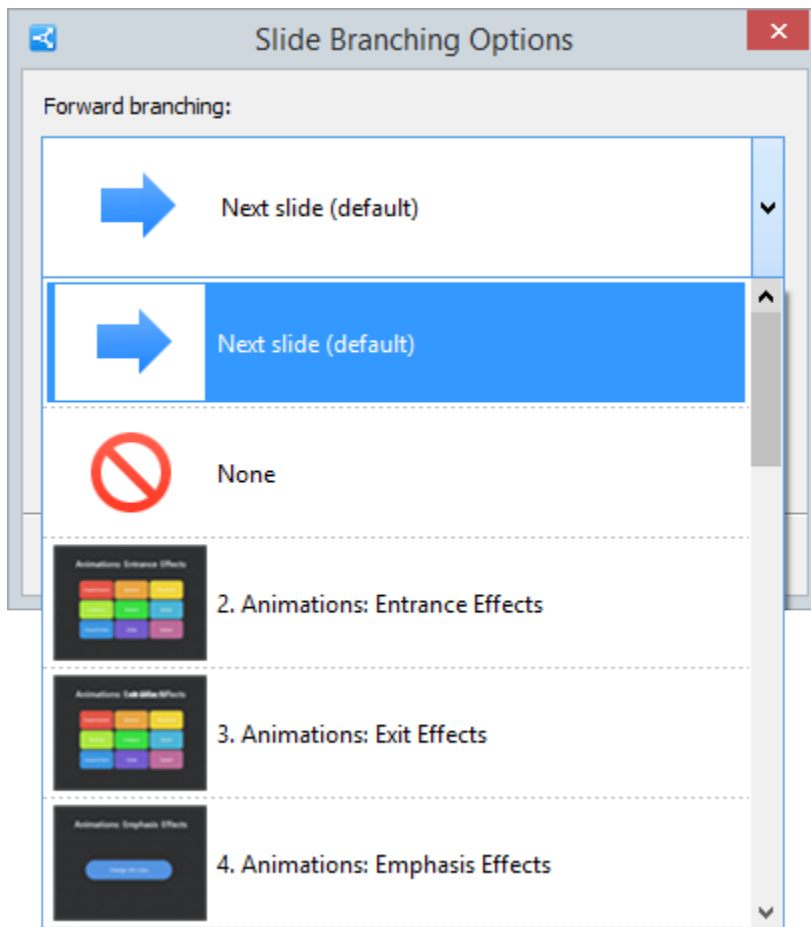
Experience API Support (Tin Can API)

Publish eLearning courses that support Experience API to get more information and feedback from your eLearning materials. iSpring gives you the chance to take all advantages of the emerging xAPI learning technology.



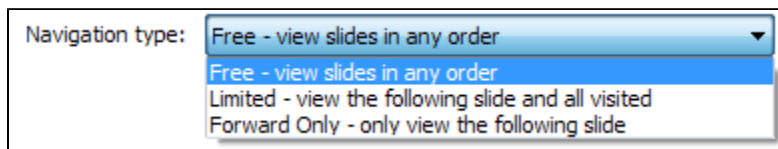
Easy Slide Branching

You can build an effective scenario of your presentation by using the branching feature. You can adjust navigation buttons of each slide to take the learner exactly where you want to in your course. Alternatively, the navigation buttons can be locked.



Total Navigation Control

Control the flow of your e-Learning course with navigation restriction options. If you find it more effective, you can restrict navigation by making user view the slides one by one or allowing him or her to access previously viewed slides only.



Updated Quiz Editor

iSpring's quiz editor has been updated to provide more flexible and user-friendly quiz authoring. The new interface remains very easy to learn and use, while offering many new features:

- **Question Groups** - Groups of questions can be very useful if your quiz includes sets of questions on several different subjects.
- **Feedback and Branching** - By customizing branching scenarios and feedback messages, you can make great interactive quizzes with non-linear navigation.
- **Audio and Video Settings** - QuizMaker's advanced multimedia settings allow you to play audio in the background, turn off video controls and more.
- **Linking Questions** - You can better control the playback of your quizzes by linking questions together or attaching them to the beginning or the end of your quiz.

Questions

Q Search

1. Intro Slide...
Intro Slide

Question Group 1

1. n 1492 Christopher Columbus land...
True/False

2. Christopher Columbus Discovers...
Info Slide

3. The Statue of Liberty, proud lady...
Multiple Choice

4. Statue of liberty
Info Slide

5. Yellowstone, the oldest American...
Multiple Response

6. Yellowstone
Info Slide

7. How many Great Lakes of North...
Numeric

Question Group 2

18. Steak ordered "au pauvre" comes...
True/False


19. Failed
Failed result slide




20. Passed

Multiple Response Question









ImageAudioVideo

Yellowstone, the oldest American national park, is located in three of the following states (Tick the names of three states):





Answer

Correct	Premise	
<input type="checkbox"/>	Indiana	 
<input checked="" type="checkbox"/>	Idaho	 
<input checked="" type="checkbox"/>	Montana	 
<input checked="" type="checkbox"/>	Wyoming	 
	Type a new item here	

Options

Feedback & Branching

Feedback: By Question

Branching: Enabled

Correct: Great knowledge of Yellowstone!

Incorrect: Sorry, the answer is incorrect...

Partial: Partially correct

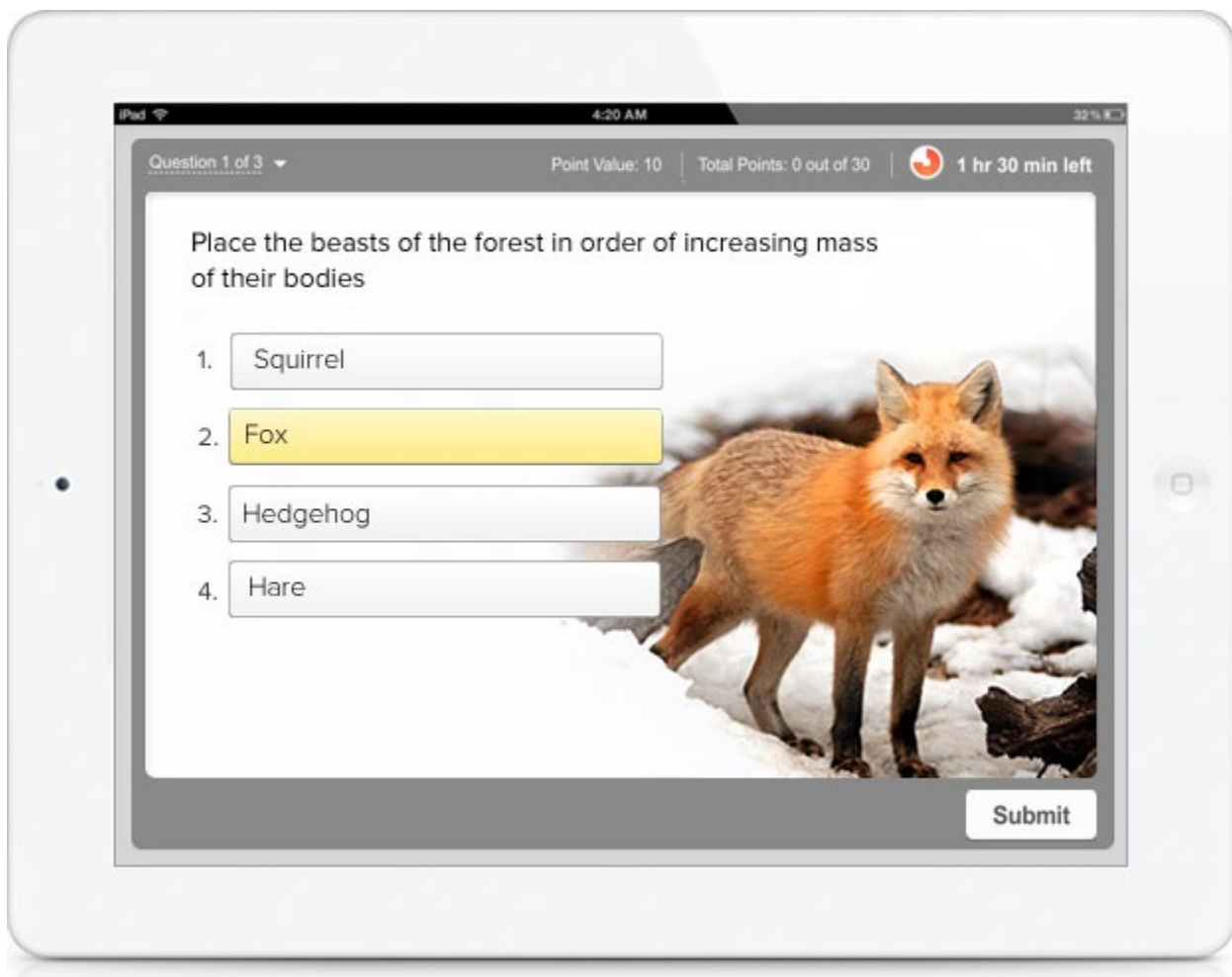
7. How many Great Lakes of North America...

6. Yellowstone

6. Yellowstone

Building Custom Quiz Themes

You can make your quiz look and feel exactly the way you want. Customize the layouts, fonts, change background, add images and animations to make it look more personal.



Request information from the course takers

The Quiz Taker Form allows to collect detailed information on a person who is going to take your quiz.

	Field Name	Condition	Value	Variable
...	Name	Mandatory ▼	<input type="text"/>	USER_NAME
...	Email	Mandatory ▼	<input type="text"/>	USER_EMAIL
...	Company	Do not ask ▼	<input type="text"/>	COMPANY
...	Department	Do not ask ▼	<input type="text"/>	DEPARTMENT
...	Job Title	Do not ask ▼	<input type="text"/>	JOBTITLE
...	Phone	Do not ask ▼	<input type="text"/>	PHONE
...	Address	Do not ask ▼	<input type="text"/>	ADDRESS

Using Variables

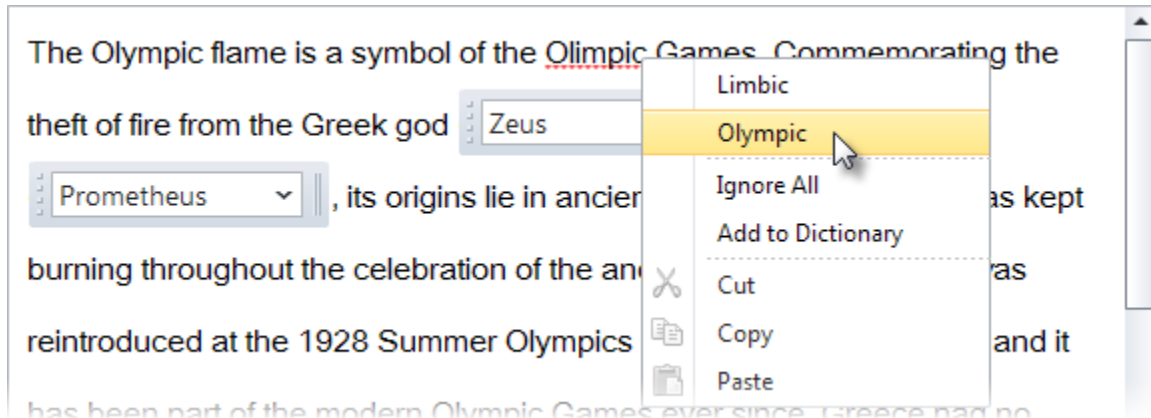
The info you have collected with the Quiz Taker Form can be saved in "Variable" and used both in the quiz and in the quiz report.

Multiple Choice Text Question

%USER_NAME%, choose one correct answer in each drop-down list.

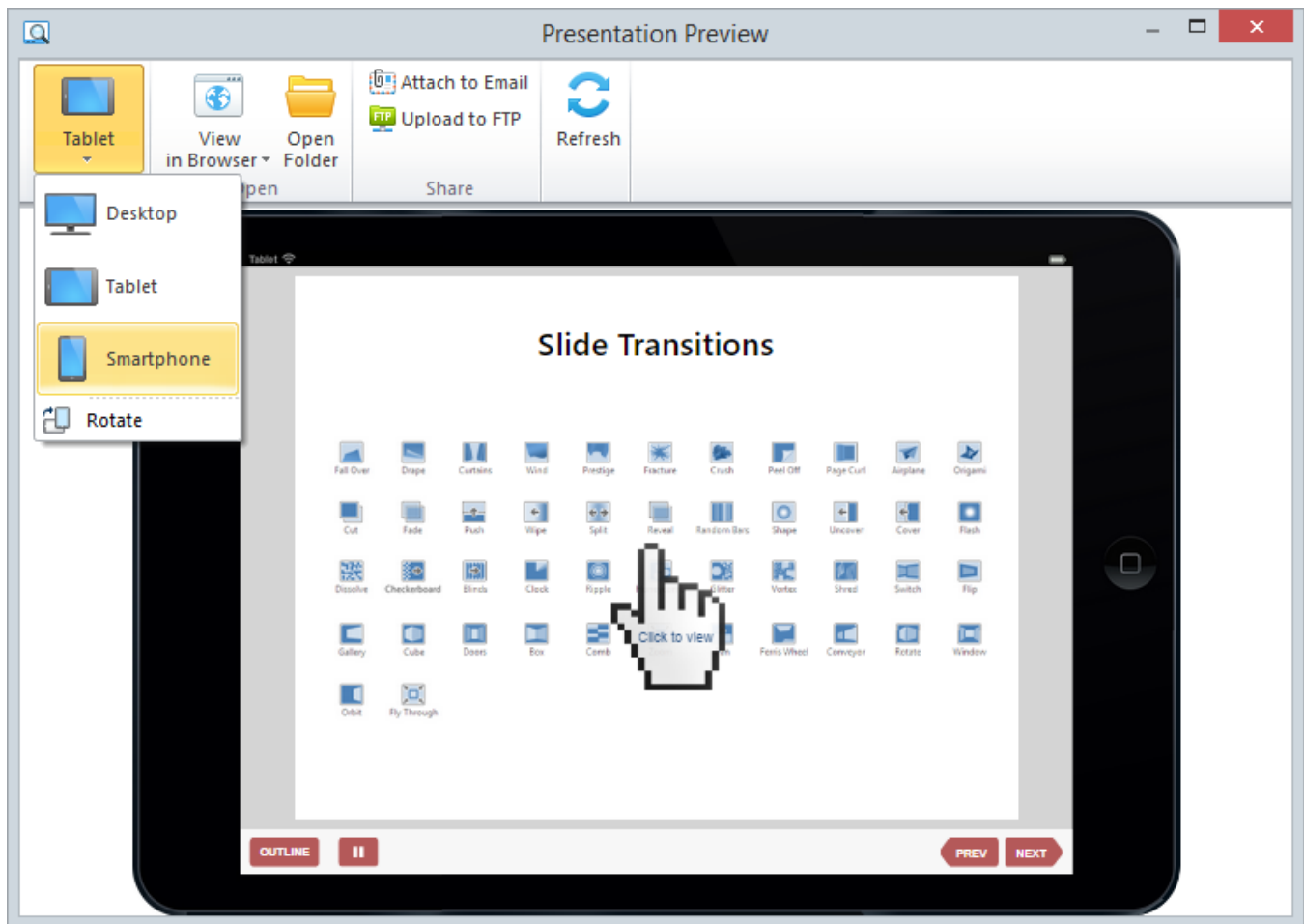
Spelling

iSpring QuizMaker will help you find and correct spelling mistakes in your texts. Support of custom dictionaries allows to add various dictionaries including idioglossaries.



Viewing the presentation on various devices

The updated Preview mode allows you to preview the presentation in a variety of modes: on mobile device, tablet or desktop.

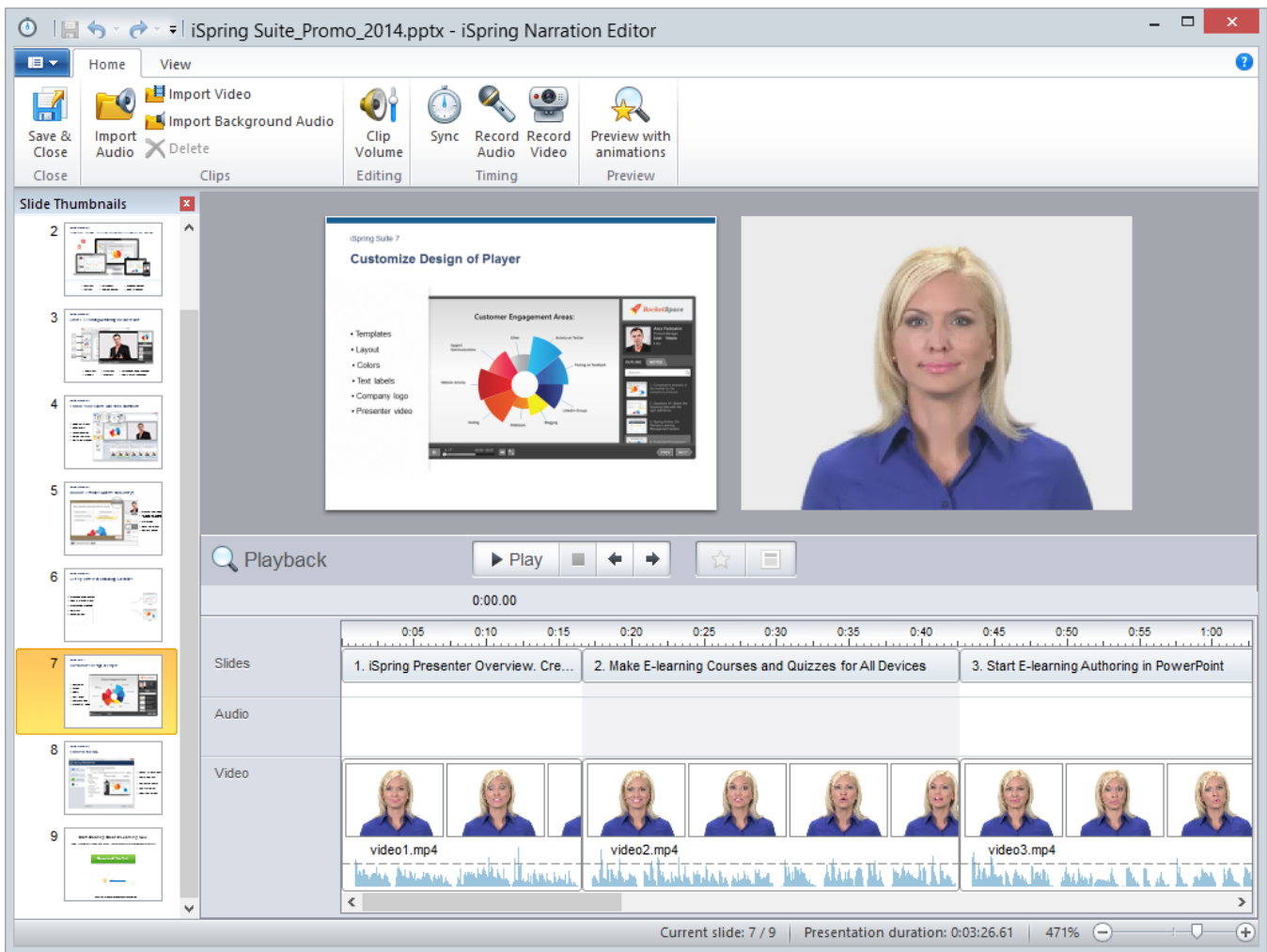


Uploading source files to iSpring Learn

When publishing the project, you can upload source files to iSpring Learn. It allows you to collaborate with your colleagues while working on the project.

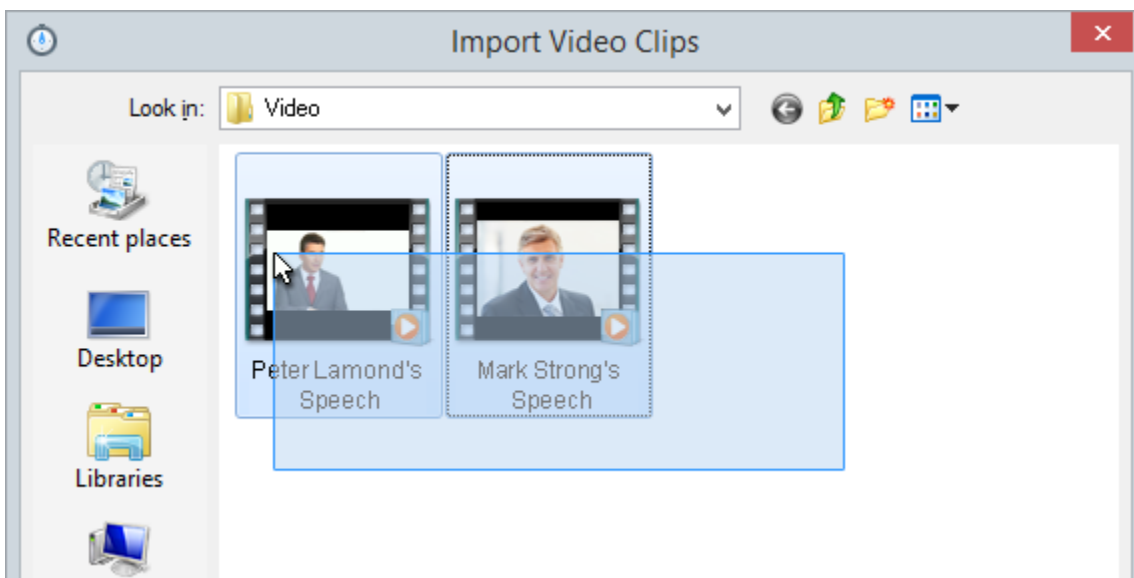
Improved Narration Editor

Spend less time recording and synchronizing your audio and video narration. With iSpring's conveniently redesigned timeline, even non-professional users can easily create an audio or video narration for an eLearning course.



Mass Import of Audio and Video Clips

Upload numerous audio or video clips at once to quickly set up the narration for your eLearning course. Thanks to the automatic timing, all you will have to do is fine-tune the narration.



Better Video Support

iSpring Suite 7 uses the most advanced video codec, which ensures better quality of inserted video with less size of the output file.

H.264

